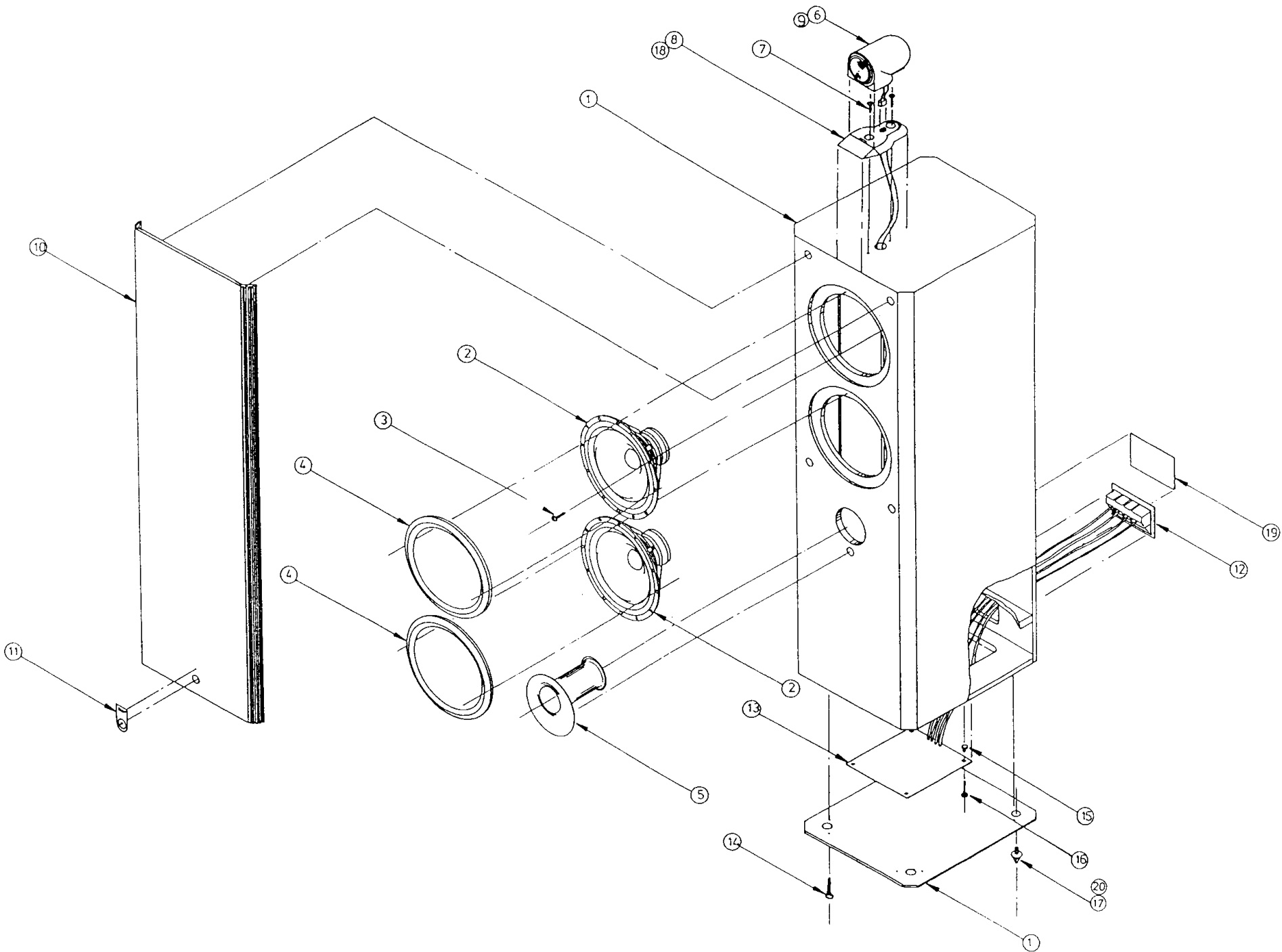
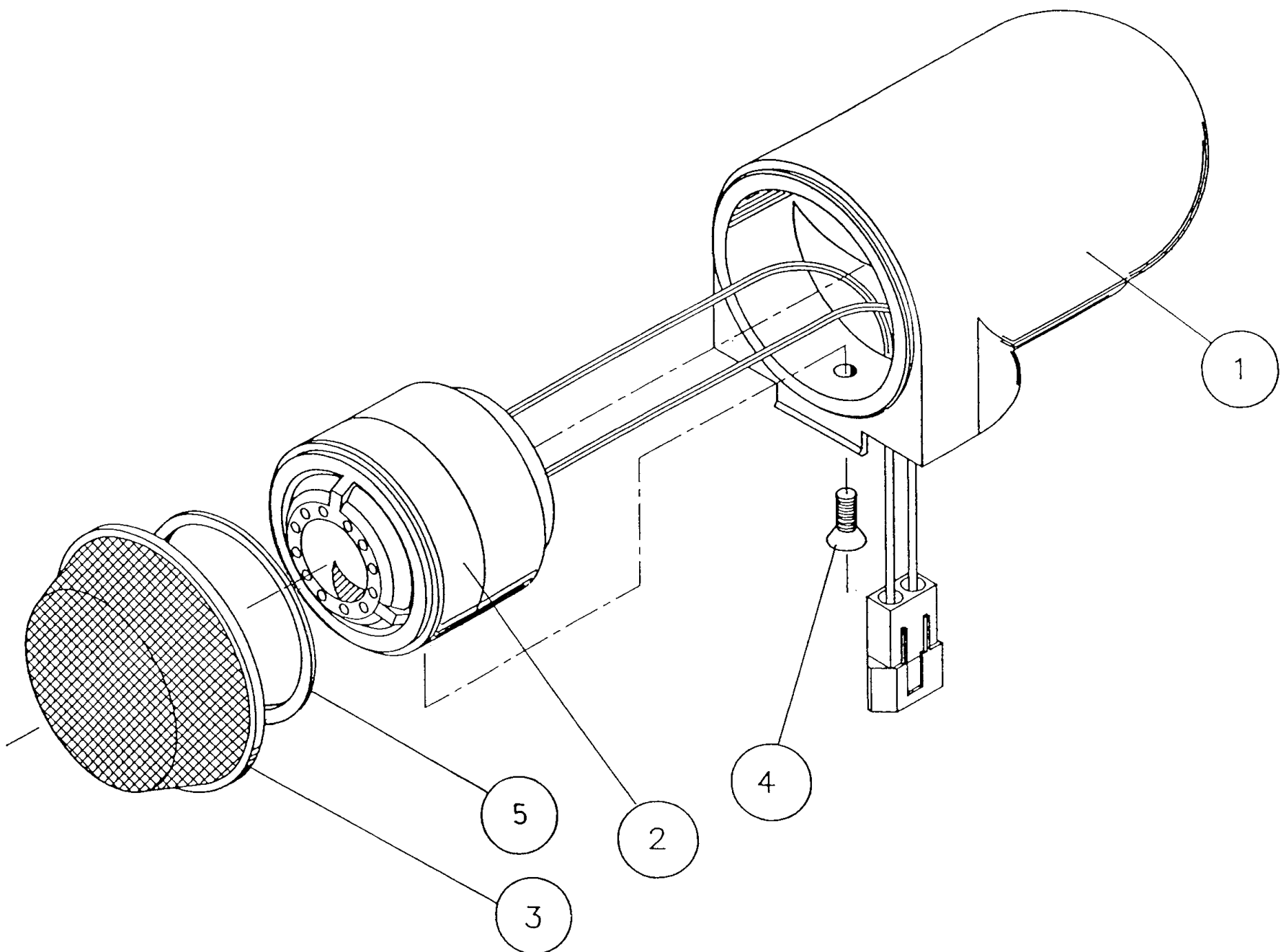


803 MATRIX

REPLACEMENT PARTS MANUAL



20	LOCKNUT M6	4		H4073
19	SERIAL LABEL	1	A1827	S1880
18	GASKET [Plinth to cabinet]	1	A1948	G0590
17	FLOOR SPIKE	4	A1247	S3840
16	SCREW N°12×3/4 T/FAST	5		H0116
15	BOARD FASTENER	5		F0515
14	SCREW	4	CABINET ASSEMBLY	
13	CROSS OVER ASSEMBLY	1		ZZ8524
12	TERMINAL TRAY ASSEMBLY	1	B1558	ZT0132
11	BADGE	1	A1768	B0850
10	GRILLE ASSEMBLY	1	C1684	G1856
9	GASKET [Pod to plinth]	1	A1947	G0604
8	TWEETER PLINTH MOULDING	1	B1801	C8702
7	SCREW	2	N°12×3/4 PAN HD POZI	H0116
6	TWEETER HOUSING MOULDING	1	B1796	C8710
5	PORT TUBE ASSEMBLY	1	TUBE P7676 TRIM P7692	
4	BASS TRIM RING	2	B1732	R4197
3	SCREW M4×25 SOC. HD. CAP	12		H5541
2	BASS UNIT ASSEMBLY	2	KEVLAR ZZ8505 COBEX ZZ8516	DRG.B1853
1	CABINET ASSEMBLY	1	C1684	Y5061
ITEM	DESCRIPTION	QTY	REMARKS	CODE N°



ITEM	QTY	CODE No	DESCRIPTION	DRG No
1	1	C8710	TWEETER POD - Black, Brown or	B1796
2	1	ZZ8532	TWEETER ASS'Y	A1897
3a	1	G1007	GRILLE	B1334
3b	1	R3050	GRILLE RING	B1333
4	1	H1281	SCREW M4x8mm POZI HD CSK	
5	1	R4171	TRIM RING	A1910



TITLE

HF GENERAL ASSEMBLY

DRG. NO.

A2897-1 -1

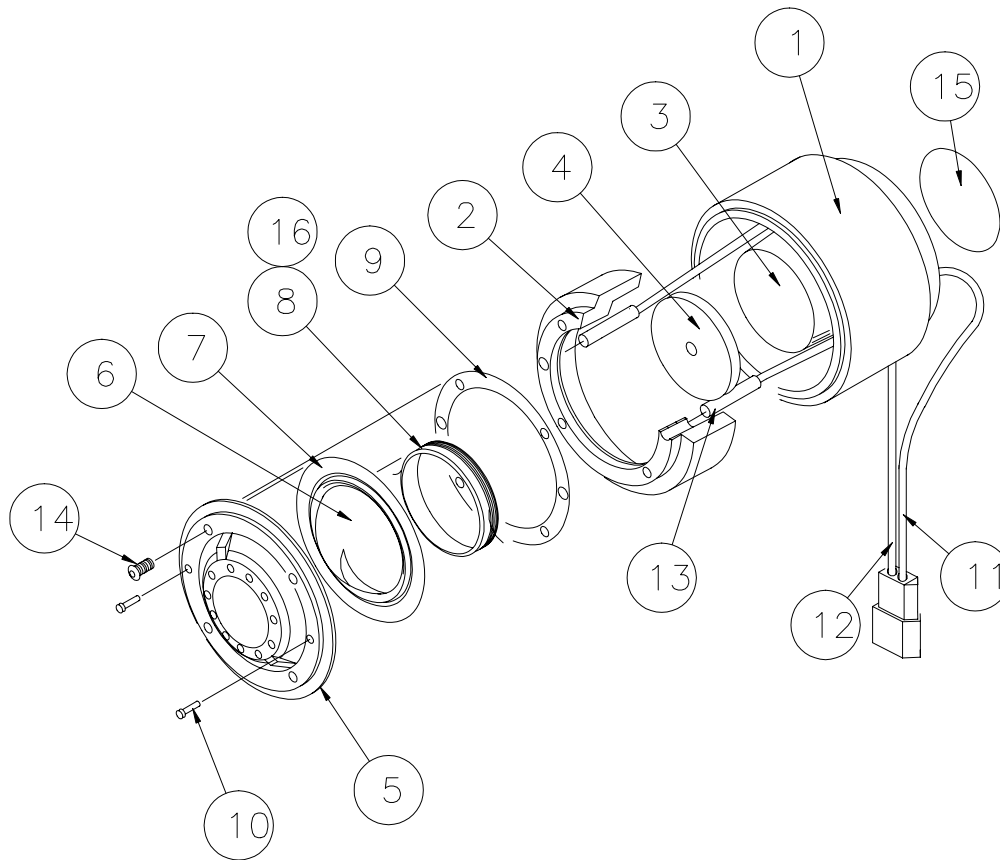
ISS

4

COPYRIGHT © 1995

DATE 23/03/95

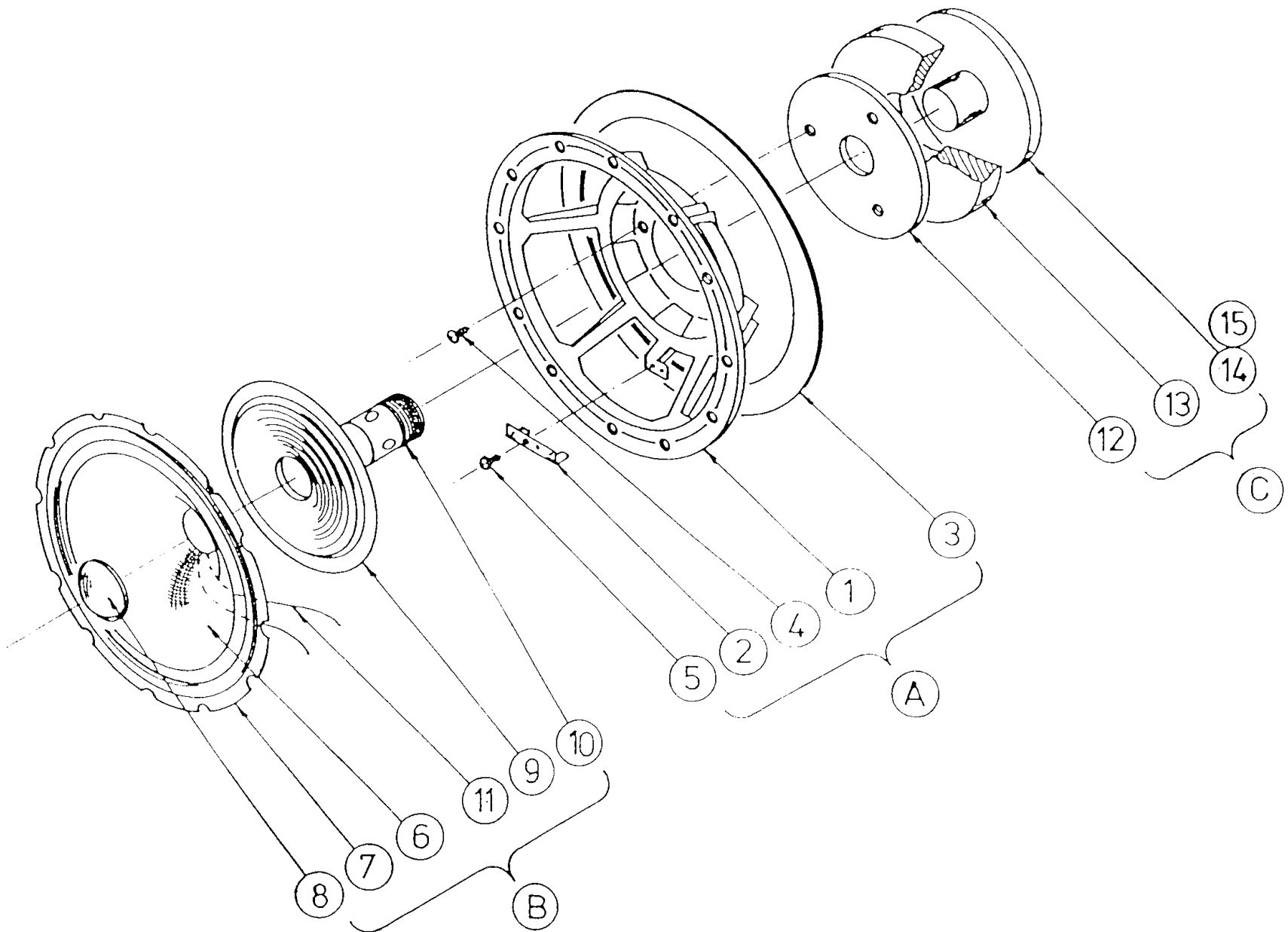
DRAWN KW

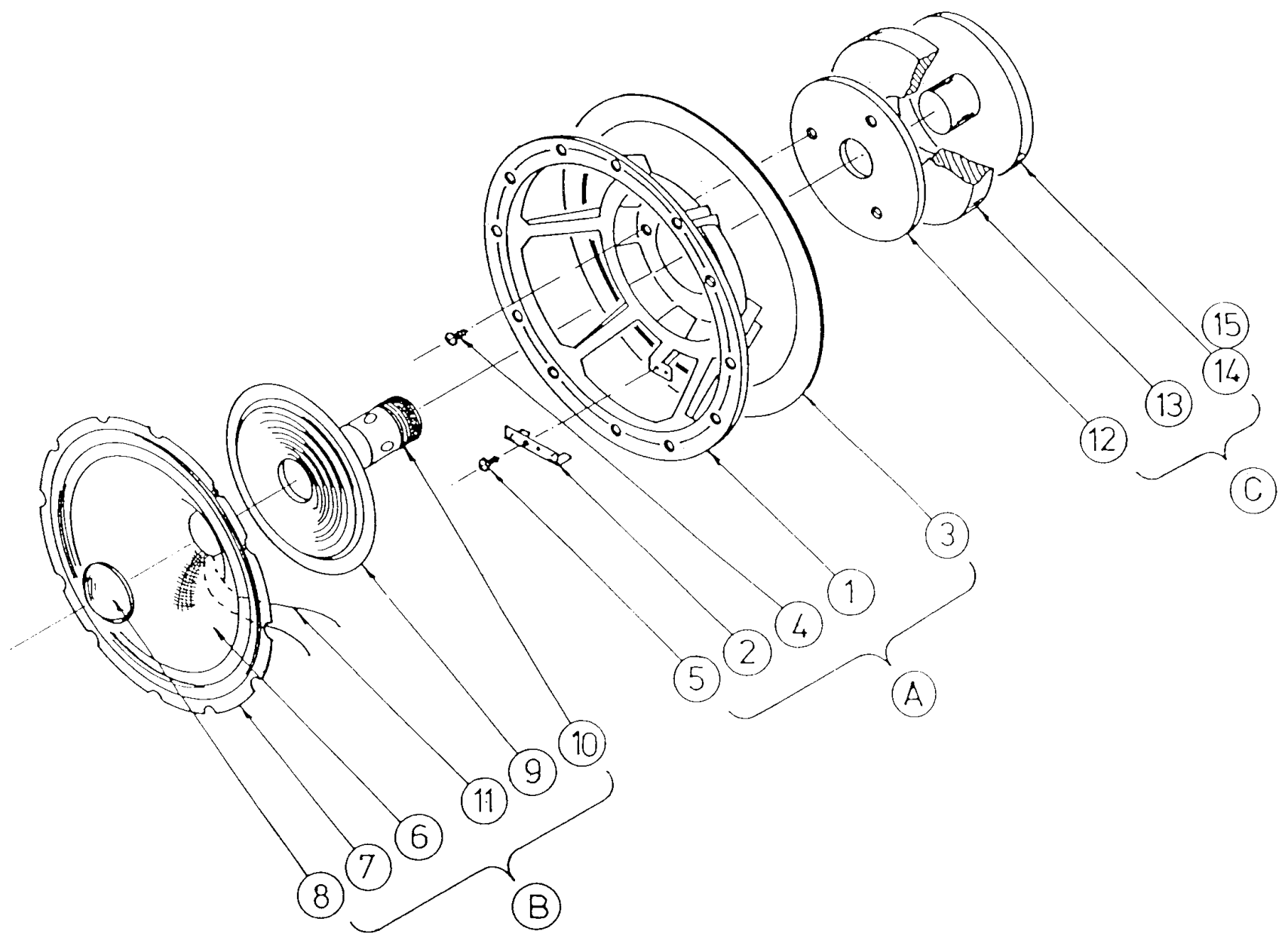


ITEM	QTY	Code No	DESCRIPTION	REMARKS	Drq No
		ZZ08532	Complete Assembly		A1897
		ZC08532	Diaphragm Assembly		
1	1	CS00027	Tweeter cup		A1830
2	1		Front Magnet Cup		A1831
3	1		Pole piece		A535
4	1	MM00094	Magnet MC4950		A1608
5	1	RR03212	Inner Mounting Ring		B1318
6	1	DD01031	Metal Dome		A1293
7	1	SS01219	Surround		A1292
8	1	ZV00337	Coil assembly		A1541
9	1	GG00418	Gasket		A537
10	2	PP02208	Pin Terminal RS 433-854		
11	1	ZH01449	Wire Red	W1074	A1899
12	1		Wire Black	W1066	
13	2	SS03328	Silicone Sleeving ø2X0.3		
14	4	HH01228	Screw M2x5 pan hd pozi		
15	1	LL01678	Label		A1847
16	A/R	AA05320	Ferrofluid		

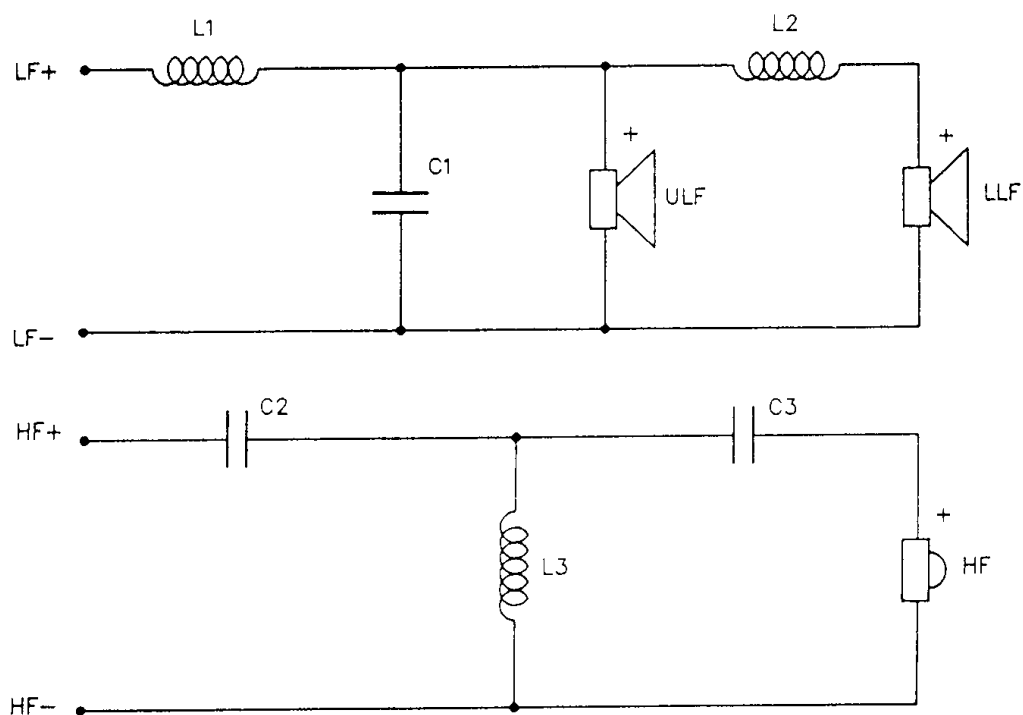
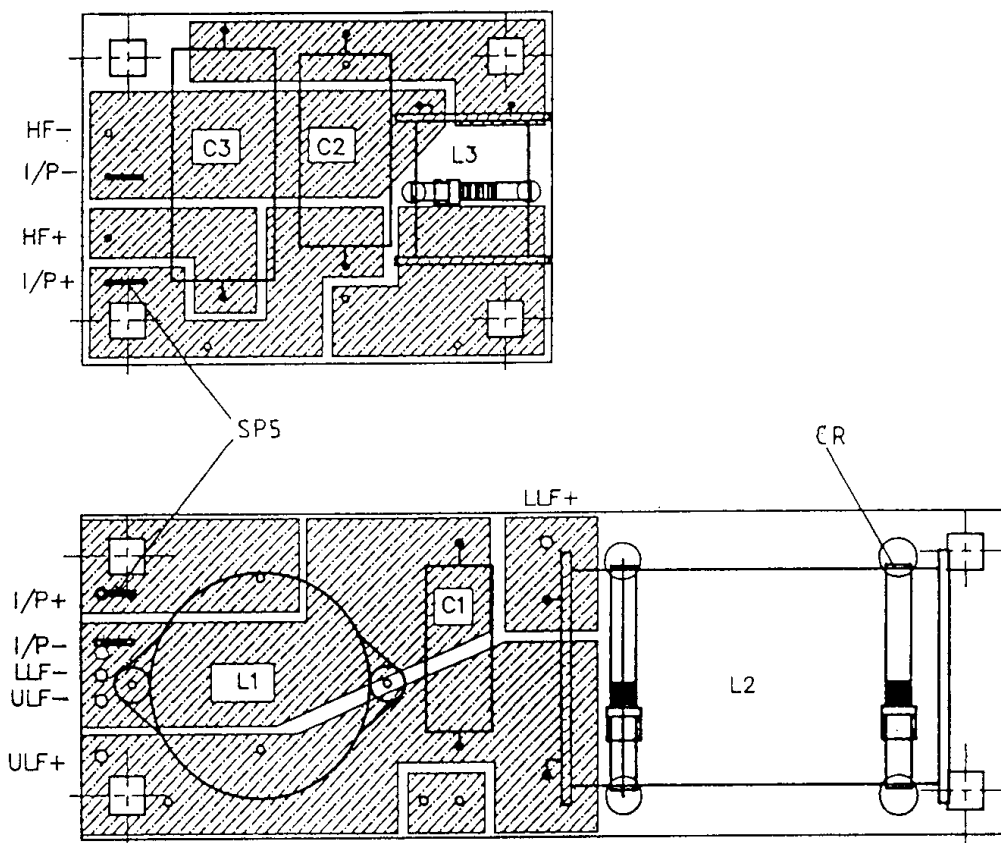
NOTE:

ZH01449 ALSO INCLUDES 1 OFF PP02100 HOUSING & 2 OFF PP02003 PIN.





ITEM	QTY	Code N°	DESCRIPTION	Drq. Ref.
-	-	ZZ8516	Bass Unit - complete assembly COBEX	B1853
A			CHASSIS ASSEMBLY	
1	1	C5665	Chassis	C1690
2	1	T0892	Terminal Panel	
3	1	G0574	Gasket	A1898
4	3	H1928	Screw M4 x csk. hd. pozi.	
5	1	R4014	Rivet	
B			CONE AND COIL ASSEMBLY	
6	1		Cone C 7941	A1913
7	1	ZS8516	Surround S1279	A1793
8	1	D0205	Dust Cap	A1915
9	1	S0689	Rear Suspension - spider	A1010
10	1	ZV0345	Coil assembly	A1567
11	2	T1767	Tinsel - copper 10 strand	
C			MAGNET ASSEMBLY	
12	1	P0549	Front Plate	A1223
13	1	M0175	Magnet Ceramic	A1513
14	1	P0558	Pole piece / Back plate	A1223 f
15	1	L1686	Label	A1849



ITEM	Code No	COMPONENT	VALUE	REMARKS
L1	ZL0507	INDUCTOR	1.35 mH	
L2	ZL0515	INDUCTOR	8.0mH	
L3	ZL1104	INDUCTOR	0.15mH	
C1	C1049	CAPACITOR	6mF	
C2	C1850	CAPACITOR	4.7mF	
C3	C1834	CAPACITOR	10mF	
CT	C6513	CABLE TIE	3 off	
PR	R4006	POP RIVET	2 off	
PCB	C4685/HF C4685/LF	PCB	A1868	
SP5		P.C.B MALE SPADE	4 off	PRESTINCERT

ZX0353