

PSU

File: XcDSP ADAU1452 KiCad PSU vV1.0.kicad\_sch

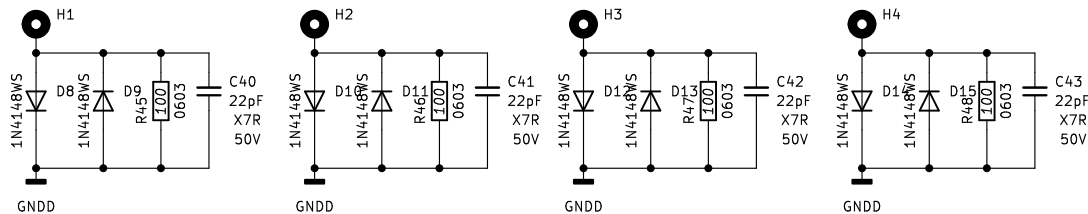
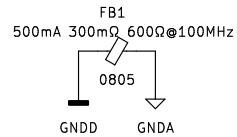
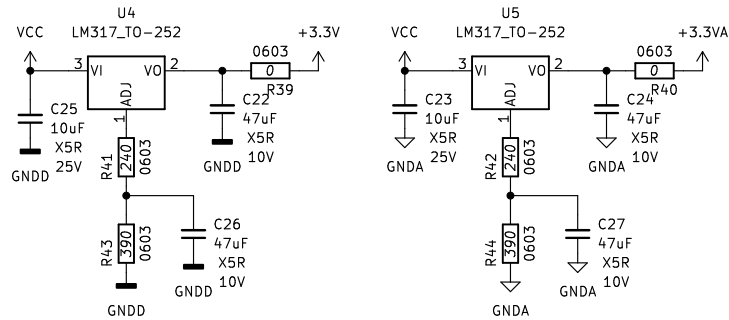
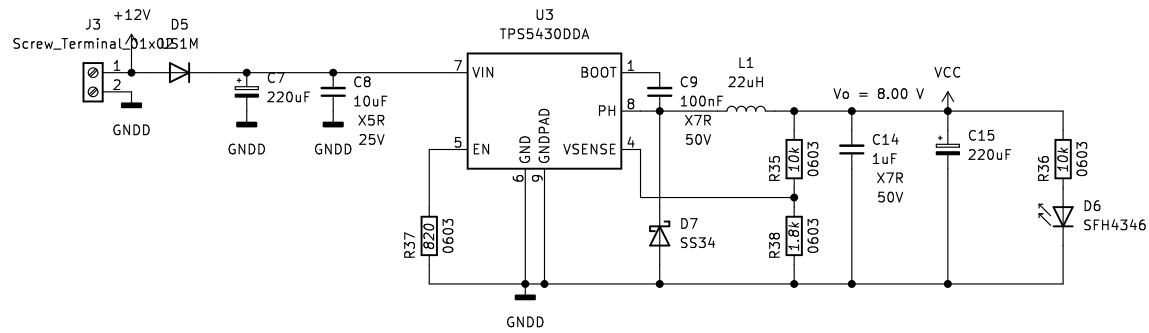
ADC Input

File: XcDSP ADAU1452 KiCad ADC Input V1.0.kicad\_sch

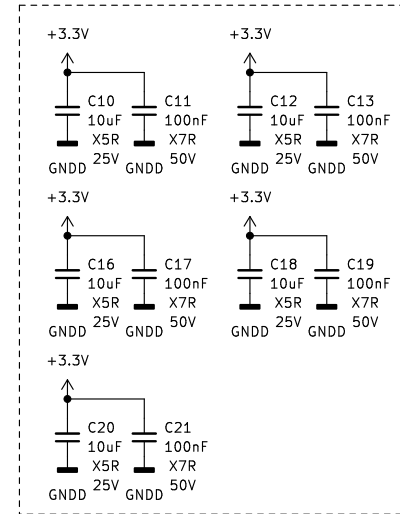
DAC Outout

File: XcDSP ADAU1452 KiCad DAC Output V1.0.kicad\_sch

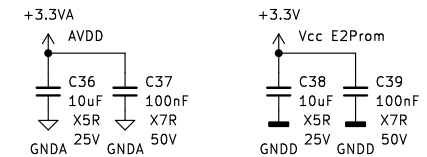
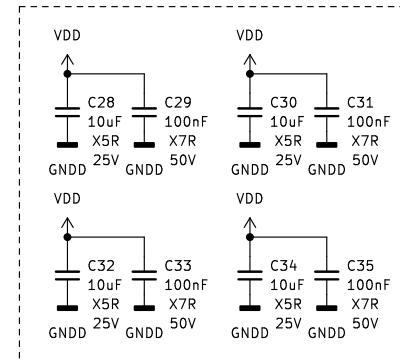
J2  
Conn\_01x06  
Wondom IPC3  
Interface

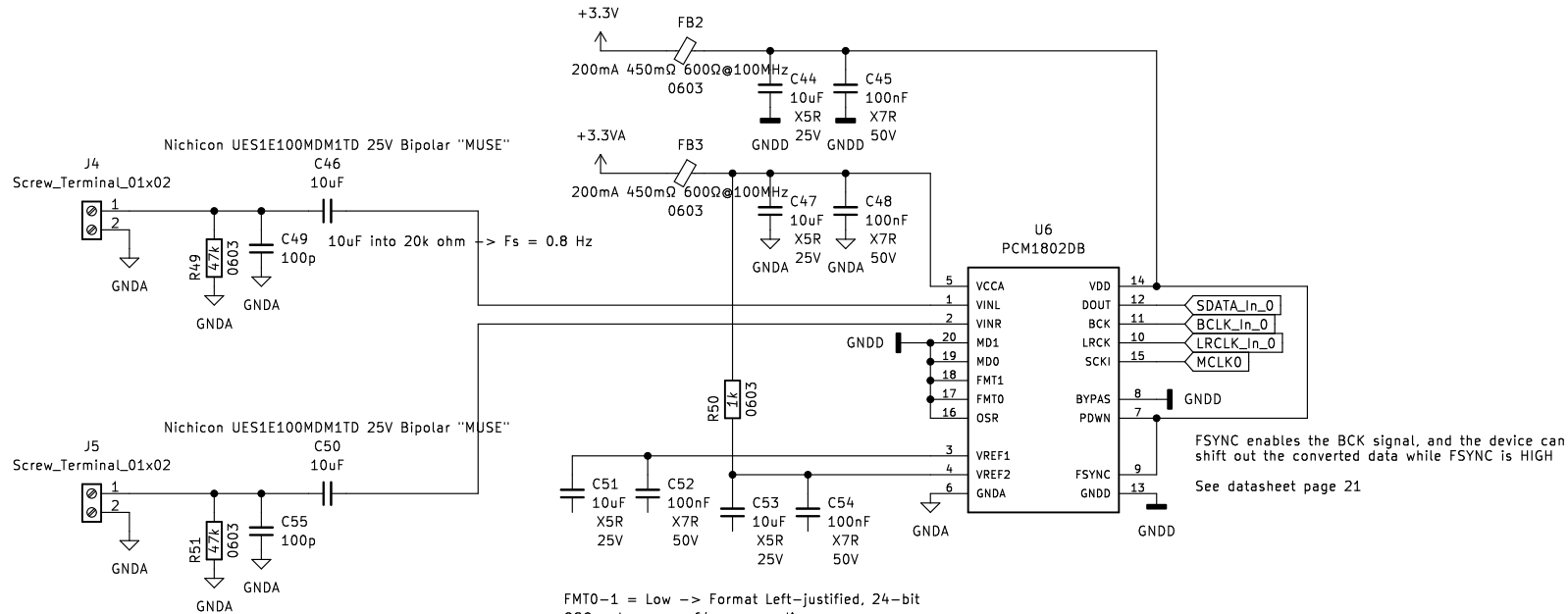


#### IOVDD + PVDD



#### DVDD





FMT0-1 = Low -> Format Left-justified, 24-bit  
 OSC = Low -> x64 oversampling  
 MD0-1 = Low -> Slave mode

