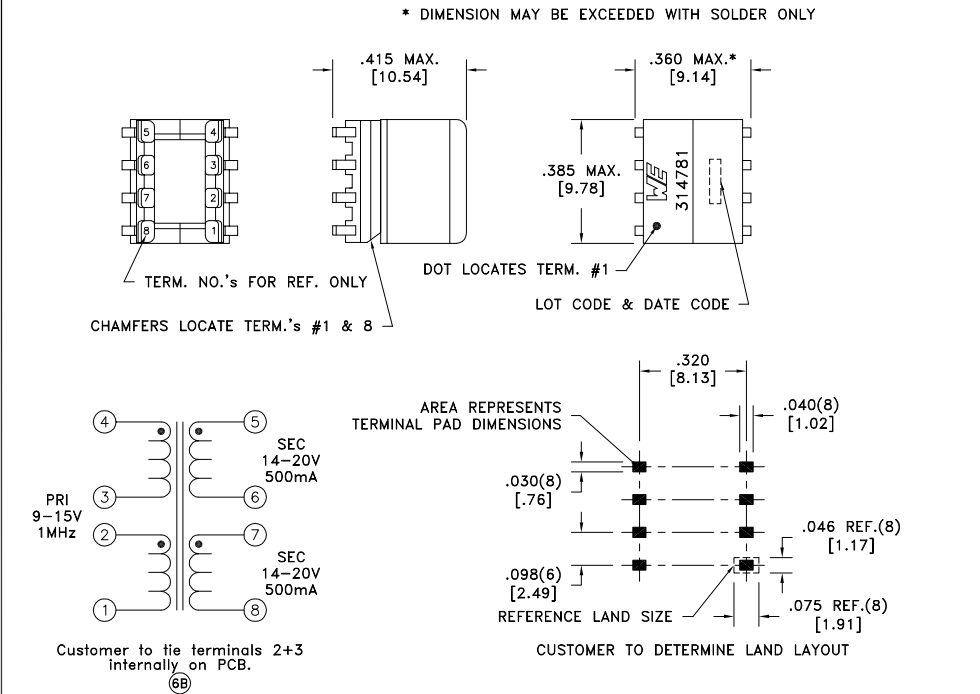


CUSTOMER TERMINAL	RoHS	LEAD(Pb)-FREE
Sn96%, Ag4%	Yes	Yes



ELECTRICAL SPECIFICATIONS @ 25°C unless otherwise noted:

PARAMETER	TEST CONDITIONS	VALUE
D.C. RESISTANCE	1-2 @20°C	0.043 ohms ±20%
D.C. RESISTANCE	3-4 @20°C	0.043 ohms ±20%
D.C. RESISTANCE	5-6 @20°C	0.268 ohms ±10%
D.C. RESISTANCE	7-8 @20°C	0.268 ohms ±10%
INDUCTANCE	1-2 10kHz, 100mVAC, Ls	40uH min.
INDUCTANCE	3-4 10kHz, 100mVAC, Ls	40uH min.
LEAKAGE INDUCTANCE	1-2 tie(5+6+7+8), 100kHz, 10mVAC, Ls	200nH typ., 400nH max.
LEAKAGE INDUCTANCE	3-4 tie(5+6+7+8), 100kHz, 10mVAC, Ls	200nH typ., 400nH max.
DIELECTRIC	1-8 tie(2+3, 6+7), 1250VAC, 1 second	1000VAC, 1 minute
URNS RATIO	(4-3):(2-1)	1:1, ±1%
URNS RATIO	(5-6):(2-1)	2:1, ±1%
URNS RATIO	(7-8):(2-1)	2:1, ±1%

GENERAL SPECIFICATIONS:
 OPERATING TEMPERATURE RANGE: -40°C to +125°C including temp rise.
 Designed for functional insulation.

Wire insulation & RoHS status not affected by wire color.
 Wire insulation color may vary depending on availability.

REV.	DATE	Packaging Specifications	CONVENTION PLACEMENT	Tolerances unless otherwise specified: Angles: ±1° Fractions: ±1/64 Decimals: ±.005 Footprint: ±.005	DRAWING TITLE TRANSFORMER	PART NO. 750314781
		Method: Tape & Reel PKG-0410 www.we-online.com/midcom				
6B	4/15	SEE REVISION SHEET FOR REVISION LEVEL		This drawing is dual dimensioned. Dimensions in brackets are in millimeters.	eiSos p/n: 750314781	SPECIFICATION SHEET 1 OF 1
6A	7/14					

