



A

B

C

D

E

F

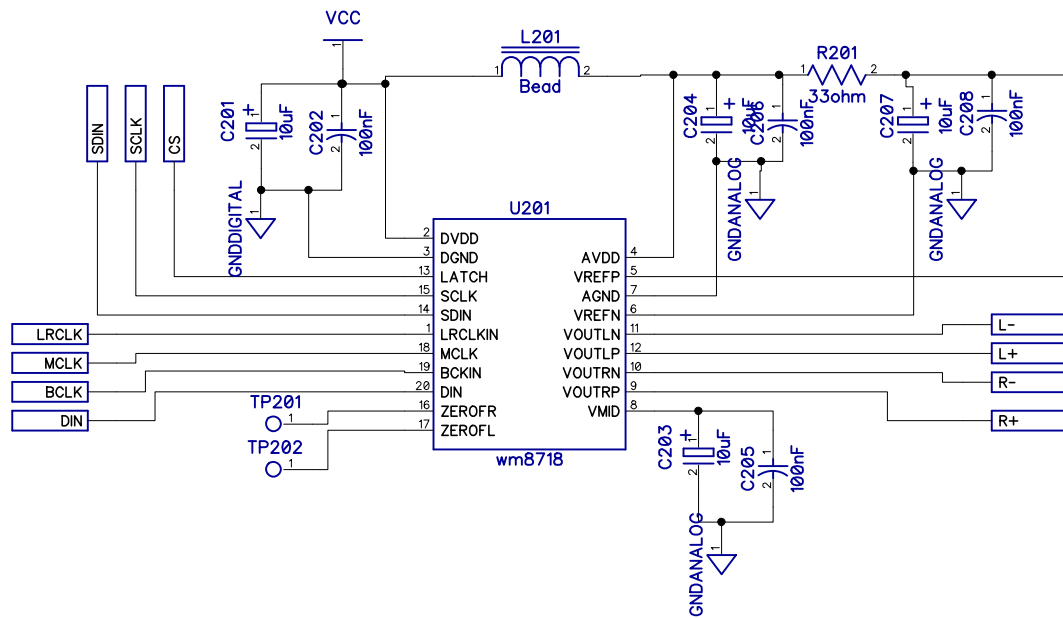
1

2

3

4

RevNo	Revision note	Date	Signature	Checked
-------	---------------	------	-----------	---------



Itemref	Quantity	DAC			Article No./Reference	
Designed by M Maher		Checked by	Approved by - date - 00/00/00	File name	Date 00/00/00	Scale 1:1
					Edition 0	Sheet 3/6

1

2

3

4

A

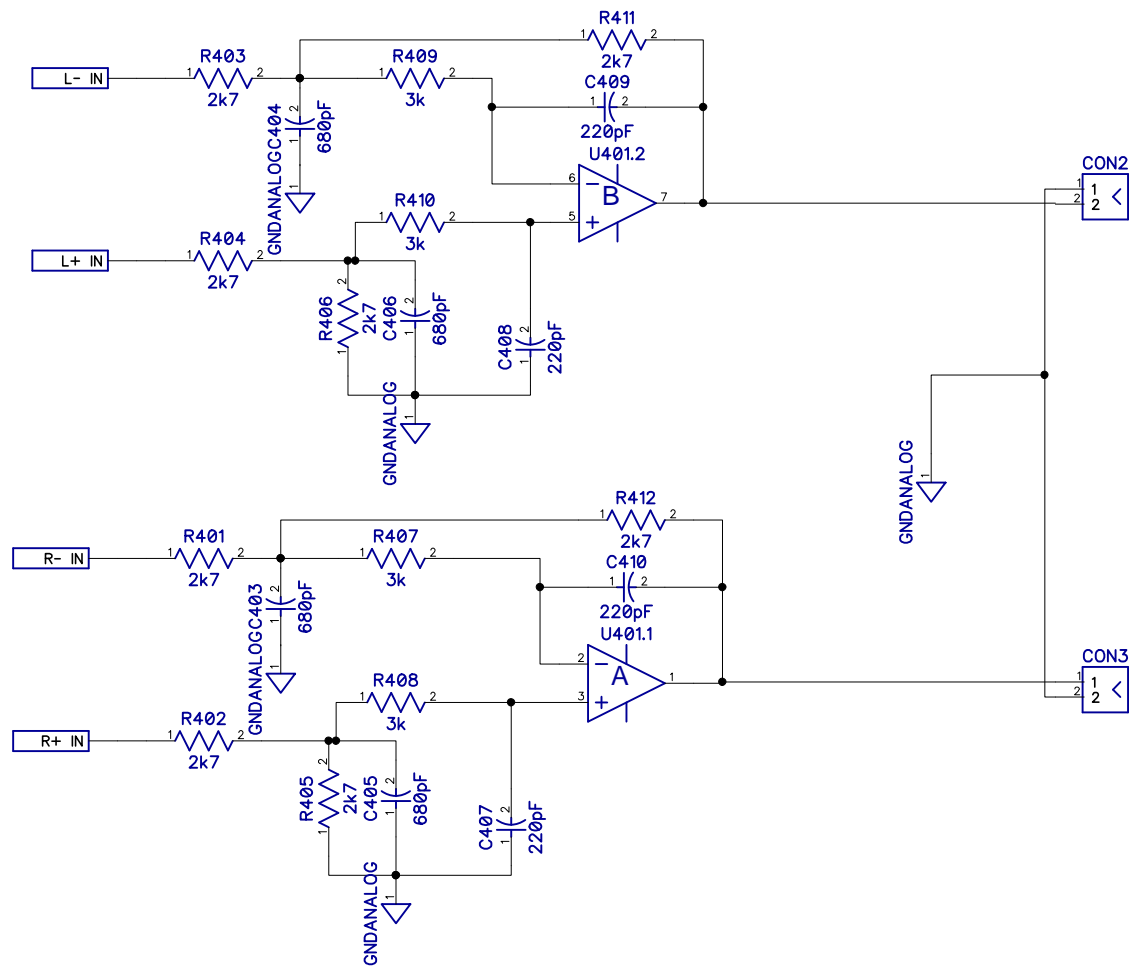
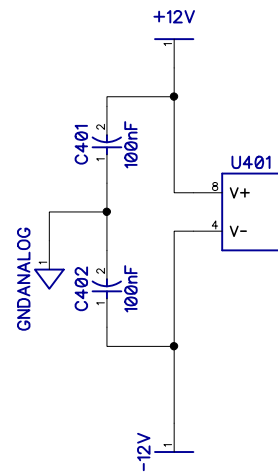
B

C

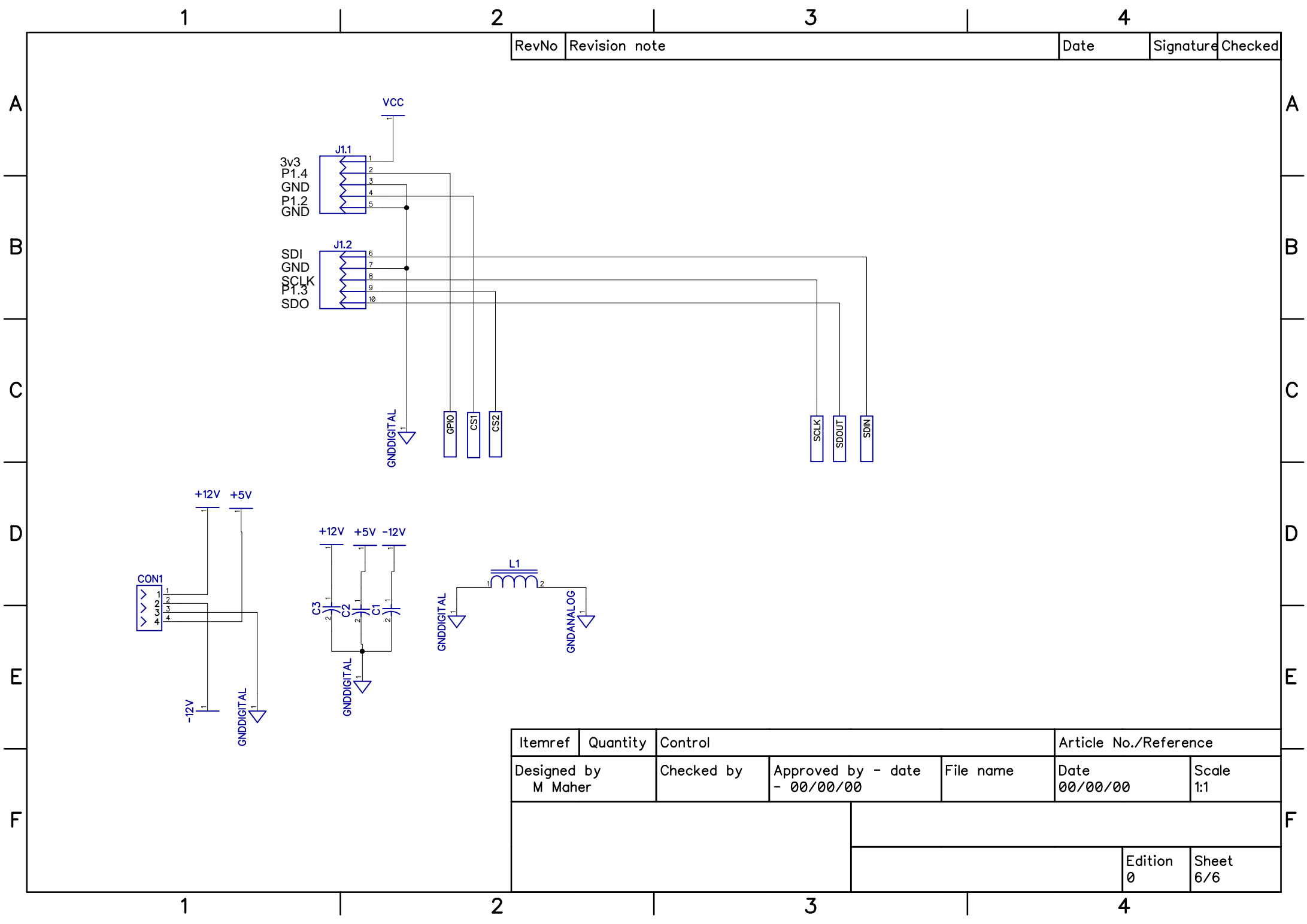
D

E

F



Itemref	Quantity	PreAmp			Article No./Reference	
Designed by M Maher		Checked by	Approved by - date - 00/00/00	File name	Date 00/00/00	Scale 1:1
						Edition 0



Type	Value	Pattern	Quantity	RefDes
CAP_1206	4.7uF	CAP_1206	1	C101
CAP_1206	100nF	CAP_1206	10	C102, C103, C202, C205, C206, C208, C401, C402, C501, C502
CAP_1206	1uF	CAP_1206	3	C104, C303, C304
CAP_1206	15pF	CAP_1206	2	C105, C106
CAP-ELECT	6.3mm	CAPPR-2.5/6.3h7	1	C201, C203, C204, C207
CAP-ELECT	6.3mm	CAPPR-2.5/6.3h7	1	C301, C302
CAP_1206	680pF	CAP_1206	4	C403, C404, C405, C406
CAP_1206	220pF	CAP_1206	4	C407, C408, C409, C410
LED		LED100	1	D501
IND		IND_400	1	L201
INDI		IND_500	1	L301
Inductor Axial	47uH	Murata 11R Choke	2	L302, L303
RES400	LINK	RES-10.16/5.1x2.5	1	R1, R2, R3, R4, R5, R6, R7, R8, R9, R10, R11, R12, R13, R14
RES400	10k	RES-10.16/5.1x2.5	1	R101, R102, R103, R104
RES_1206		RES_1206	1	R201
RES400	2K7	RES-10.16/5.1x2.5	1	R401, R403
RES400	2k7	RES-10.16/5.1x2.5	1	R402, R404, R405, R406, R411, R412
RES400	3k	RES-10.16/5.1x2.5	1	R407, R408, R409, R410
RES_1206	680ohm	RES_1206	1	R501
RES_1206	100k	RES_1206	1	R502
Testpoint		Testpoint	11	TP101, TP102, TP103, TP201, TP202, TP301, TP302, TP303, TP304, TP305, TP501
GP31 Toslink RX		GP1FAV31RK0F	1	U101
WM8804		SSOP-20	1	U102
wm8718	WM8718	SSOP-20	1	U201
Termi-Block		Termi-Block 3.5mm	3	U301, U402, U403
DCDC_Recom		Recom R7831	1	U302
DCDC_MEA		Murata MEA	1	U303
MC33078D		SOIC-8/150mil	1	U401
tsop348		TSOP348	1	U501
MSP430G2131		DIP-14	1	U502
CRYSTALHC-49	49khz	HC-49U	1	X101
R38-32.768		BCY-2/D3.1	1	X501