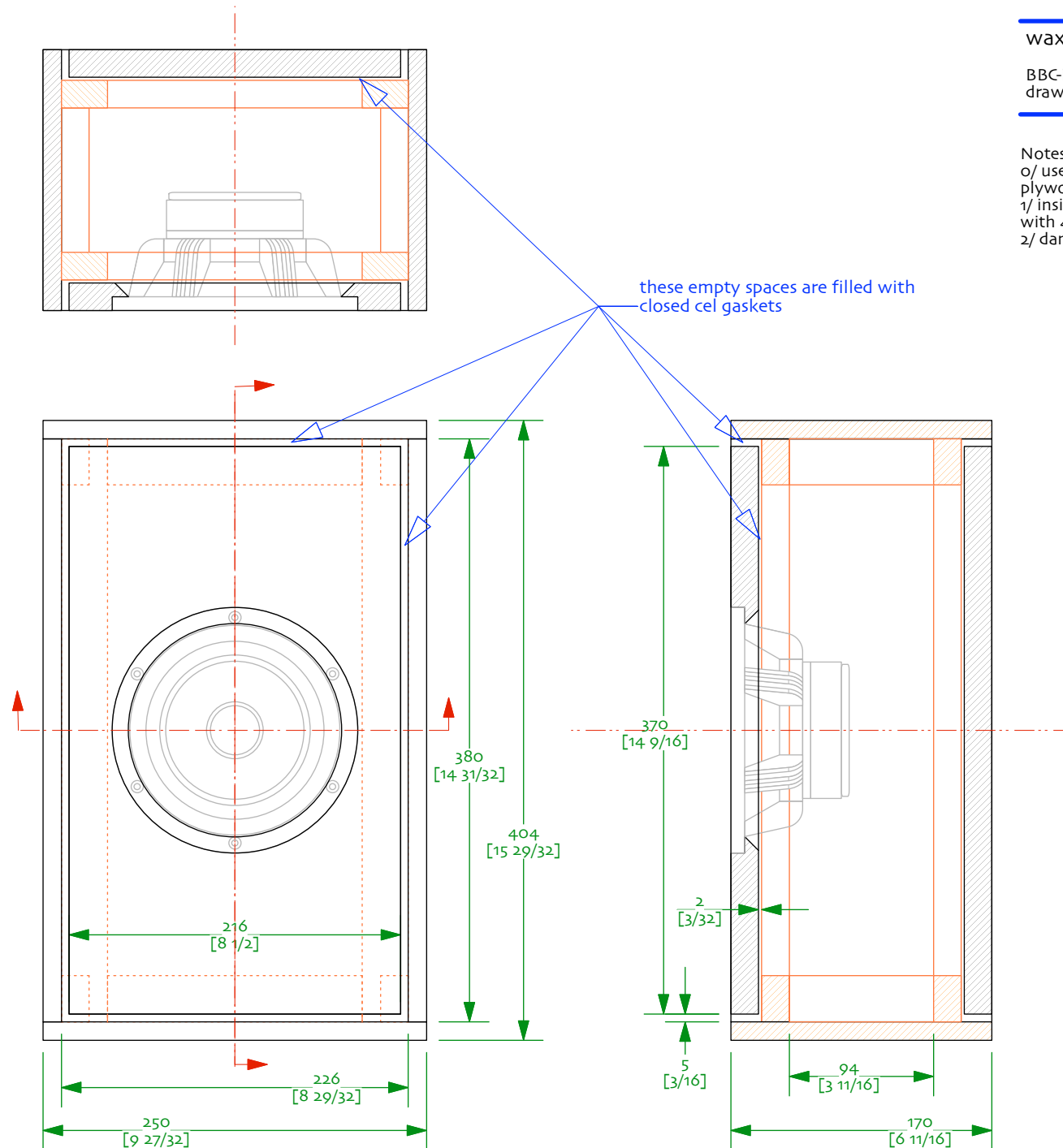


## waxx sealed midTweeter enclosure

BBC-inspired | [18mm + 12mm] plan  
drawn by dld | 22-january-2021

Notes:  
o/ uses 12 & 18 mm material, high quality  
plywood recommended  
1/ inside of 12mm pnela (side top, bottom  
with 4mm bituminum sheet  
2/ damp...

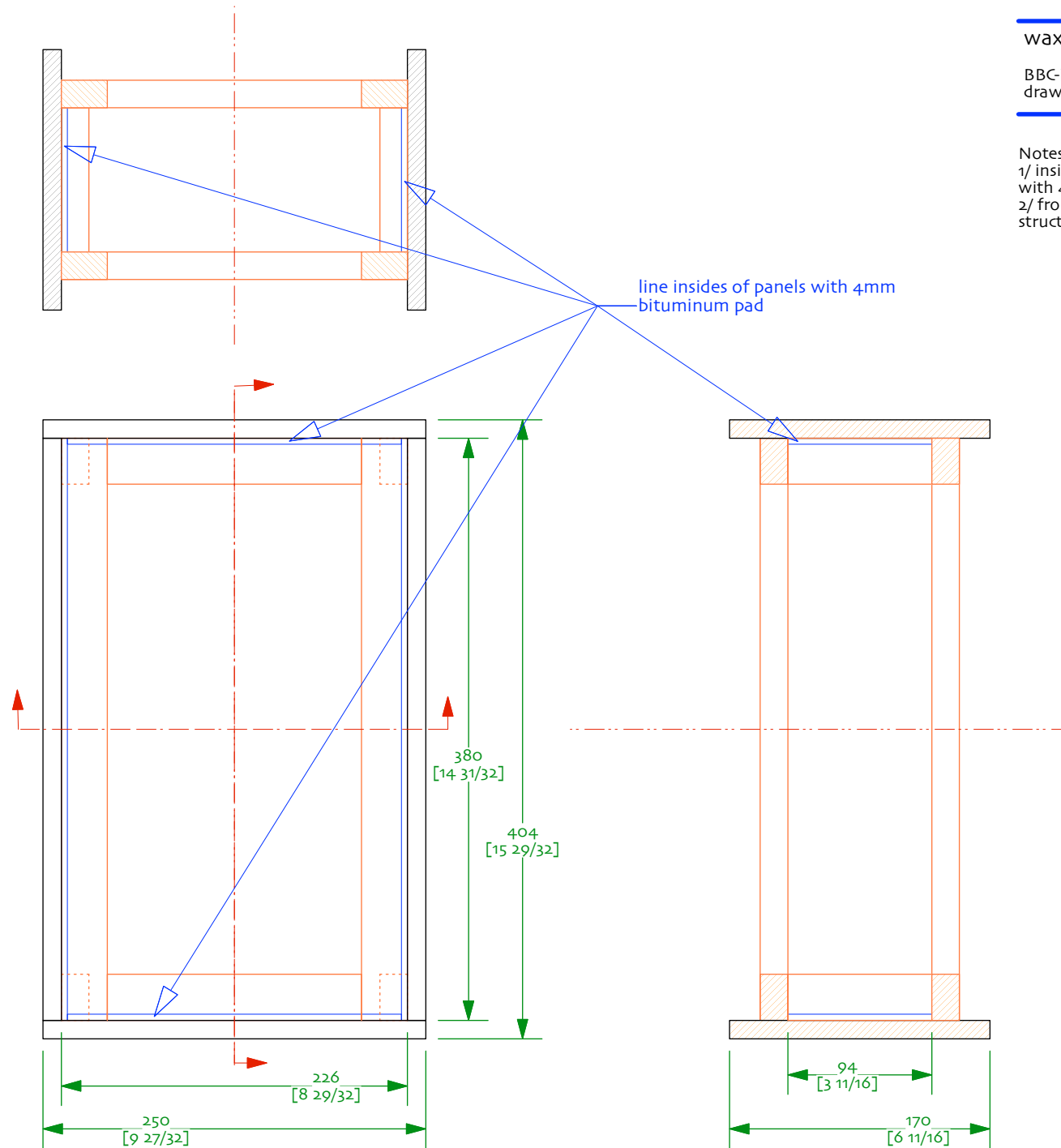


## waxx sealed midTweeter enclosure

BBC-inspired | [18mm + 12mm] frame plan  
drawn by dld | 22-january-2021

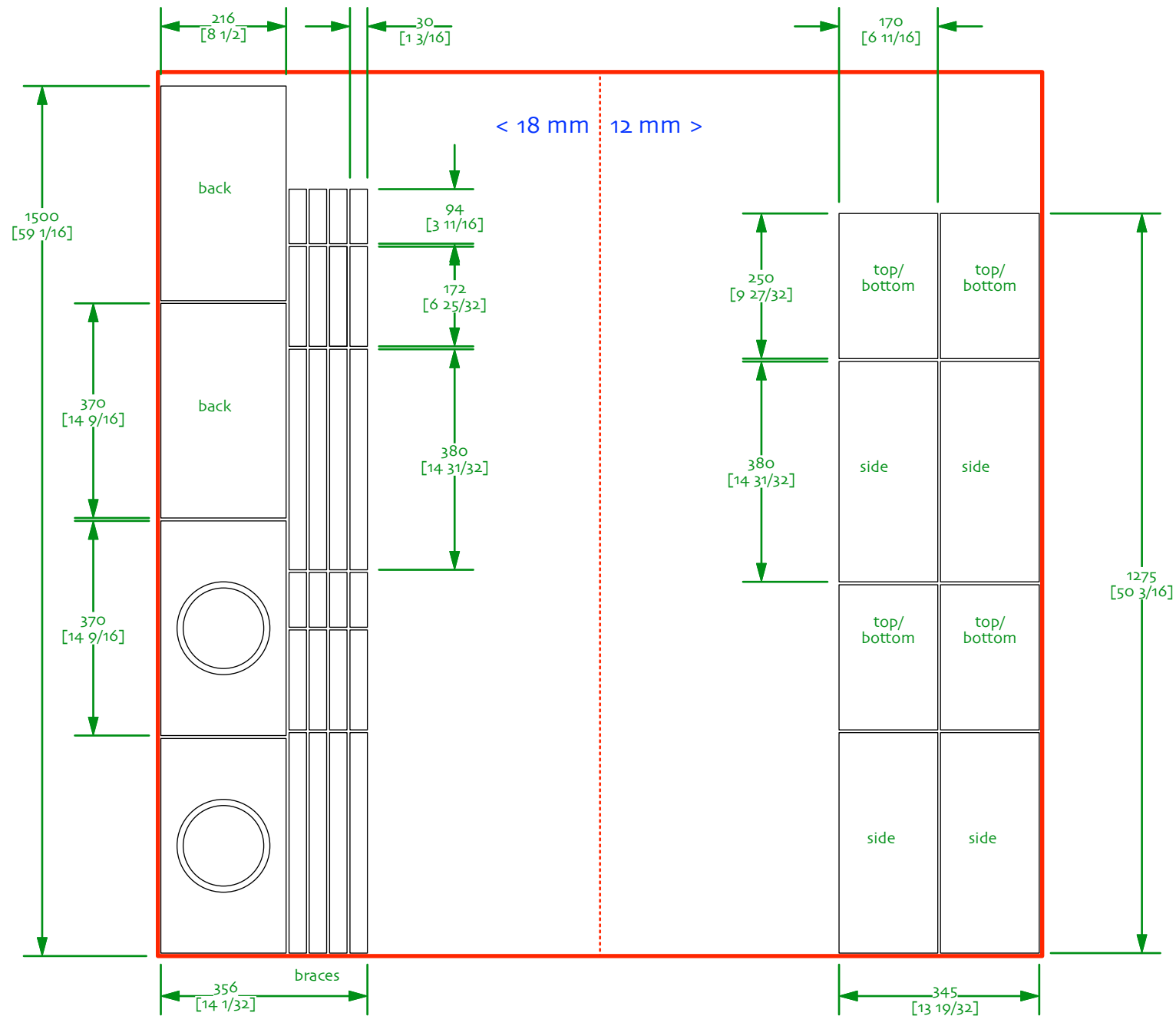
### Notes:

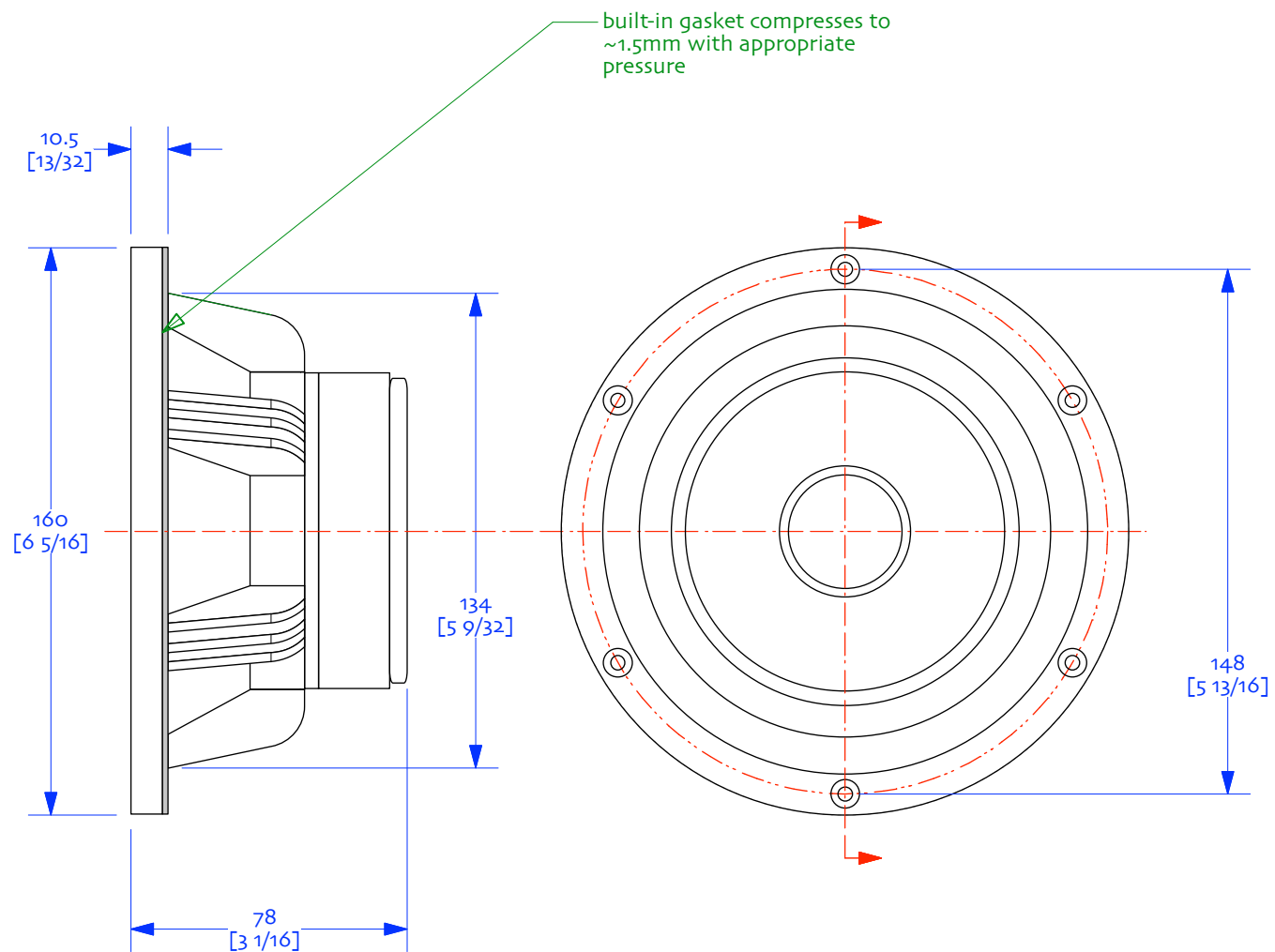
- 1/ inside of 12mm pnela (side top, bottom with 4mm bituminum sheet
- 2/ front baffle is screwed to the inner brace structure, flots free of the sides, top, bottom



waxx sealed midTweeter enclosure

[18mm + 12mm] 5 x 5 cut sheet  
drawn by dld | 22-january-2021





Alpair 10x  
no bezel cover

driver dimensions  
drawn by dld | 18-december-2017