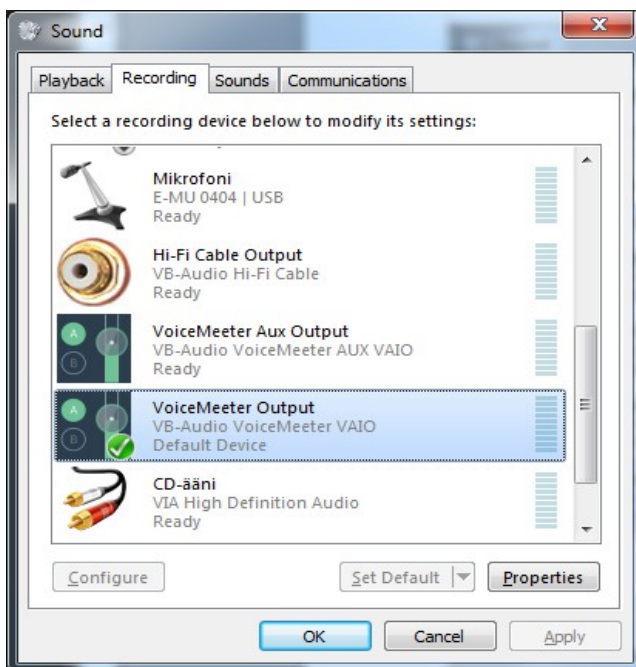
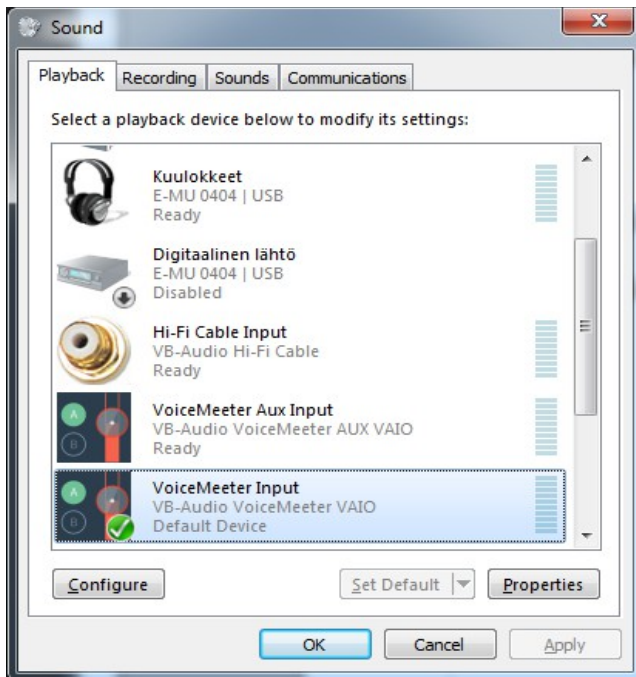


1.
Install Voice Meeter Banana
2.
Set system audio I/O devices:



3.

Set the devices Banana uses (here A1 = ASIO E-MU 0404 USB) ... this brings the hardware inputs available.



Set also the buffer size as short as possible (less latency).

System settings / Options...

X

System Settings / Information

Voicemeeter Version: 2.0.0.8

IN1 Physical Input #1

Status: OFF

SR: 44100 Hz

buf:0

ch:2

r:24

- none -

IN2 Physical Input #2

Status: OFF

SR: 44100 Hz

buf:0

ch:2

r:24

- none -

IN3 Physical Input #3

Status: OFF

SR: 44100 Hz

buf:0

ch:2

r:24

- none -

OUT A1 Main Device

Status: ON

SR: 44100 Hz

buf:220

ch:4

r:24

ASIO: ASIO E-MU 0404 | USB

OUT A2

Status: OFF

SR: 44100 Hz

buf:0

ch:0

r:24

- none -

OUT A3

Status: OFF

SR: 44100 Hz

buf:0

ch:0

r:24

- none -

Buffering MME: 480 (default: 1024 samples)

Buffering WDM: 128 (default: 512 samples)

Buffering KS: 128 (default: 512 samples)

Monitoring Synchro Delay:

OUT A1: 0 ms

OUT A2: 0 ms

OUT A3: 0 ms

Virtual ASIO Type: Float32LSB

WDM Input Exclusive Mode: No

Preferred Main SampleRate: 44100 Hz

Engine Mode: Normal

PATCH COMPOSITE

Select PRE-Fader Inputs used by Composite Mode (for 8 Channels of the BUS)

BUS ch1

BUS ch2

IN#1 Left

IN#2 Left

IN#3 Left

IN#4 Left

IN#5 Left

IN#5 Right

PATCH INSERT

Activate Insert per Pre-Fader Inputs (22 channels of Voicemeeter Insert ASIO Driver)

in1 Left

in1 Right

in2 Left

in2 Right

in3 Left

in3 Right

in4 Left

in4 Right

in4 C

in4 LFE

in4 SL

in4 SR

in4 BL

in4 BR

in5 Left

in5 Right

in5 C

in5 LFE

in5 SL

in5 SR

in5 BL

in5 BR

☐

☐

☐

☐

☐

☐

☐

☐

☐

☐

☐

☐

☐

☐

☐

☐

☐

☐

☐

☐

☐

☐

IN #1

IN #2

IN #3

IN #4

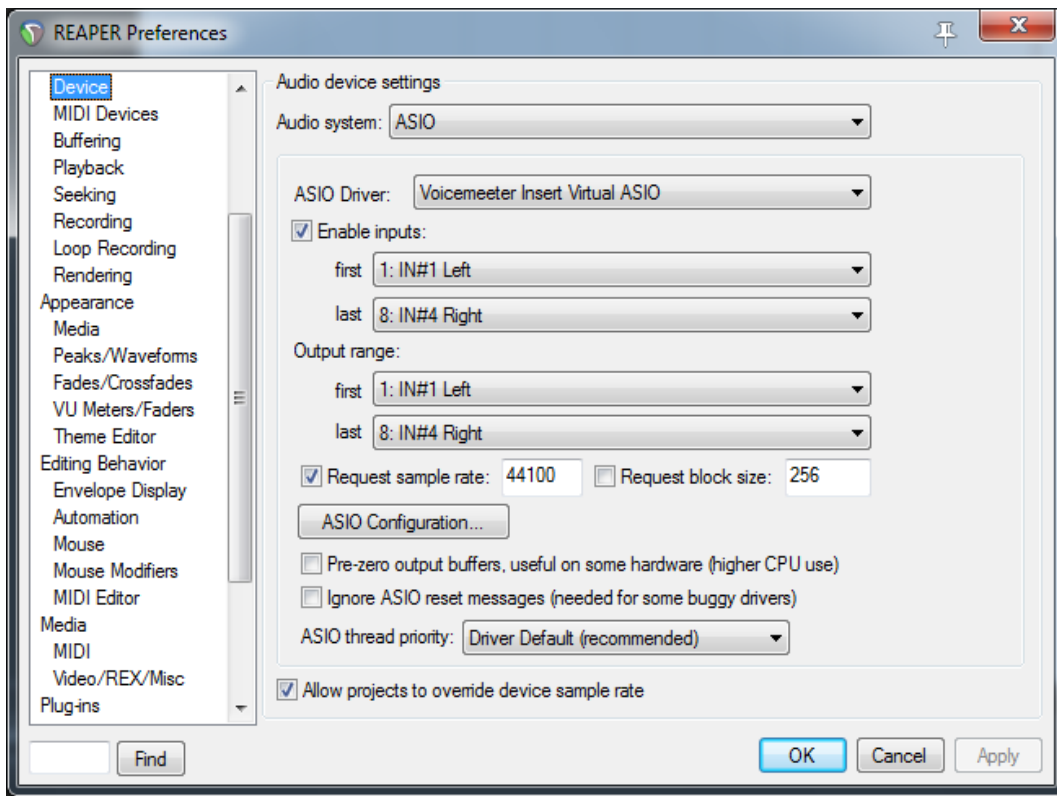
VIRTUAL INPUT

IN #5

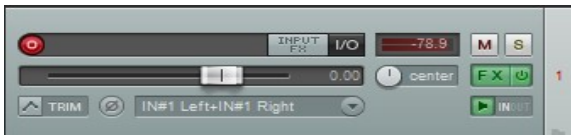
VIRTUAL AUX

4.

Open the software (here Reaper) you're going to use for to host your (VST(DX/AU) plug-ins (VSTHost, Minihost Modular, Reaper, Cantabile, etc..) and select ASIO and "Voicemeter Insert Virtual ASIO" there. Range the I/O channel count by your needs.

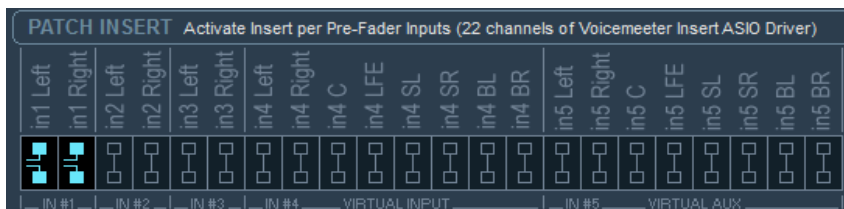


Add a new track (Audio or MIDI) and/or add some plug-in(s) (FX) and enable it(/them):



5.

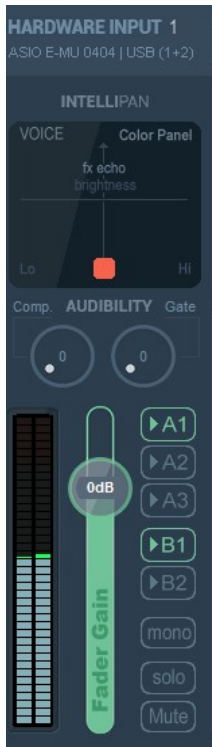
Finally, enable the VSTHost in Banana. Open the Banana Options/Settings screen and enable PATCH INSERT for channels used in routing.



Now you should see the signal pass through your plug-ins.

6.

After this you just need to enable B1 bus on Banana main screen:



6.

To record the signal on 3rd software (here Audacity) just open the software, configure it to use voicemeter output as its input:

