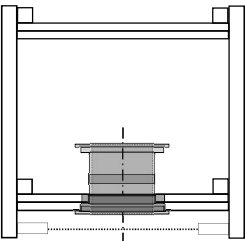


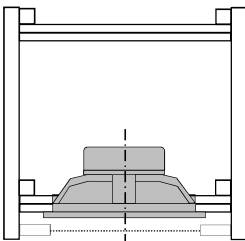
Vinewood Media Room Speaker Cabinet Modifications for Altec Model 19 Clones

NOTES:

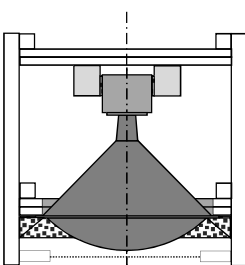
- 1. All boards 0.75" Furniture Grade walnut or oak veneer plywood unless otherwise noted
- 2. Calculated LF cabinet internal volume 10.46 Ft³ without subtracting internal components bracing and reinforcement
- 3. G.P.A. recommended volume 8.8 Ft³ , tuned to 29 Hz
- 4. Estimated internal volume: 9.71 – 0.12 (416 LF) – 0.10 (6" PP) – 0.19 (Horn) – .026 (HF) – 0.25 (Est Bracing) = 9.02 Ft³
- 5. Reference Internal Volumes:
 - 416 LF: 0.250 Ft³ (Front Mount)
 - 416 LF: 0.120 Ft³ (Back Mount)
 - 802 HF: 0.026 Ft³
 - 811-B Horn: 0.190 Ft³
 - Crossover 0.050 Ft³
 - 6" Dia X 6.906" Long Precision Port: 0.10 Ft³



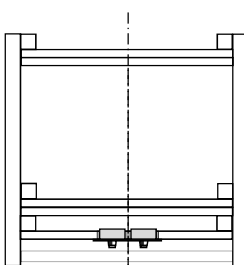
Section D-D



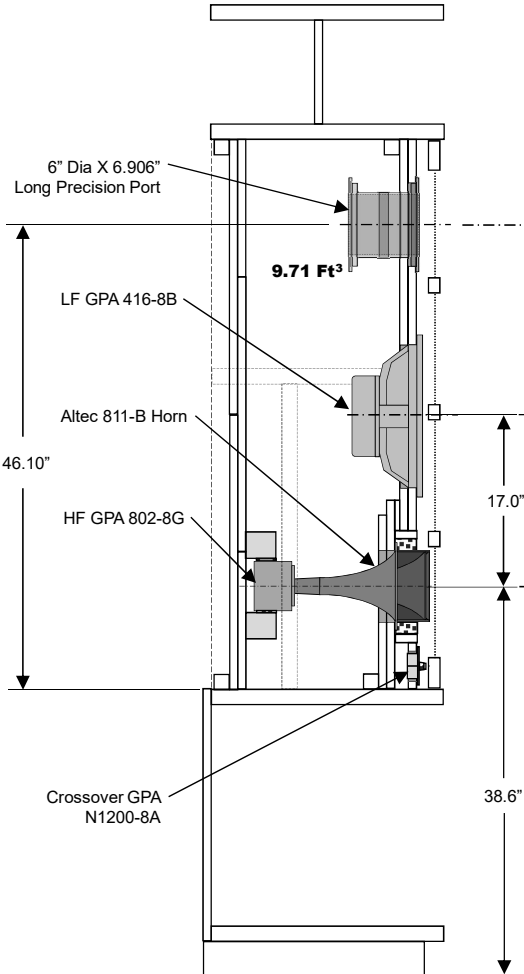
Section C-C



Section B-B



Section E-E



Section A-A

