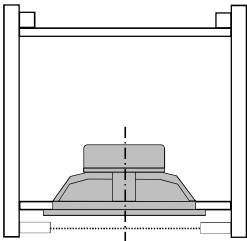


Vinewood Media Room Speaker Cabinet

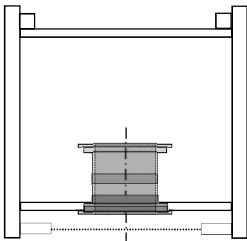
Modifications for Altec Model 19 Clones

NOTES:

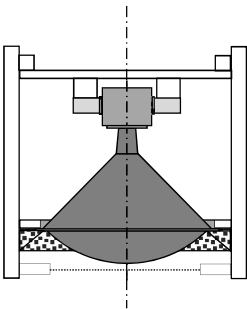
- 1. All boards 0.75" Furniture Grade walnut or oak veneer plywood unless otherwise noted
- 2. Calculated LF cabinet internal volume 10.46 Ft³ without subtracting internal components bracing and reinforcement
- 3. G.P.A. recommended volume 8.8 Ft³, tuned to 29 Hz
- 4. Estimated internal volume: $7.46 + 3.00 - 0.12$ (416 LF) $- 0.10$ (6" PP) $- 0.19$ (Horn) $- 0.026$ (HF) = 10.02 Ft³
- 5. Reference Internal Volumes:
 - 416 LF: 0.250 Ft³ (Front Mount)
 - 416 LF: 0.120 Ft³ (Back Mount)
 - 802 HF: 0.026 Ft³
 - 811-B Horn: 0.190 Ft³
 - Crossover 0.050 Ft³
 - 6" Dia X 6.906" Long Precision Port: 0.10 Ft³



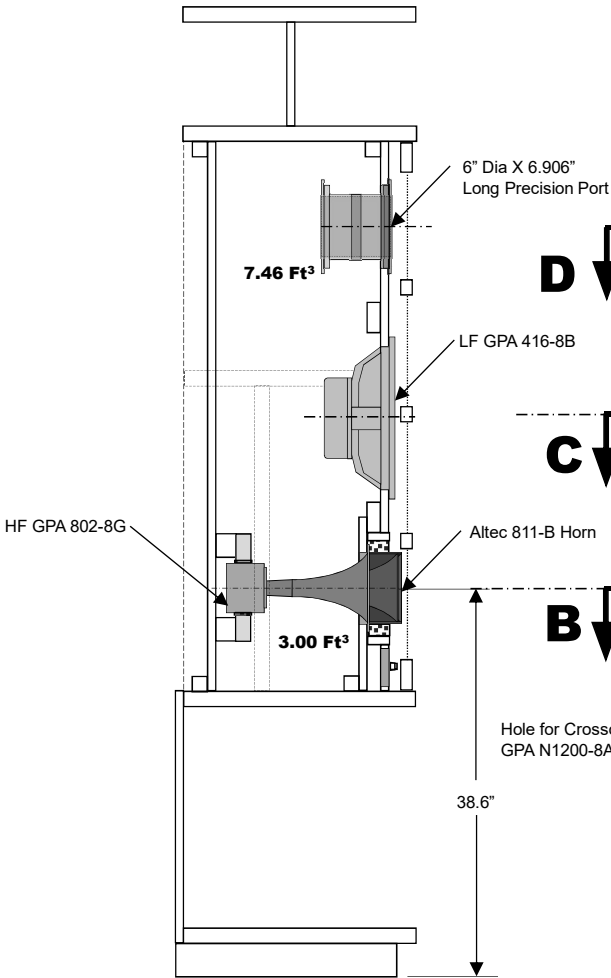
Section C-C



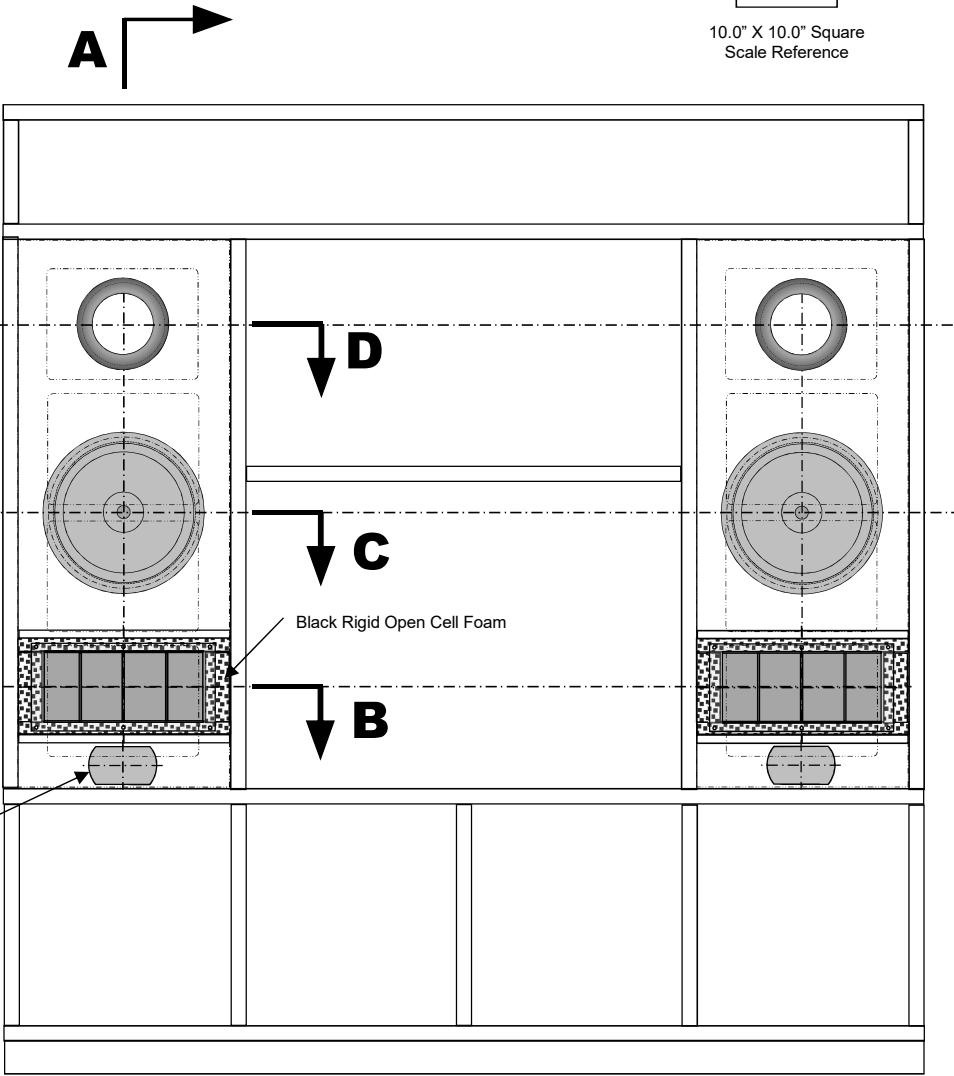
Section D-D



Section B-B



Section A-A



Section A

