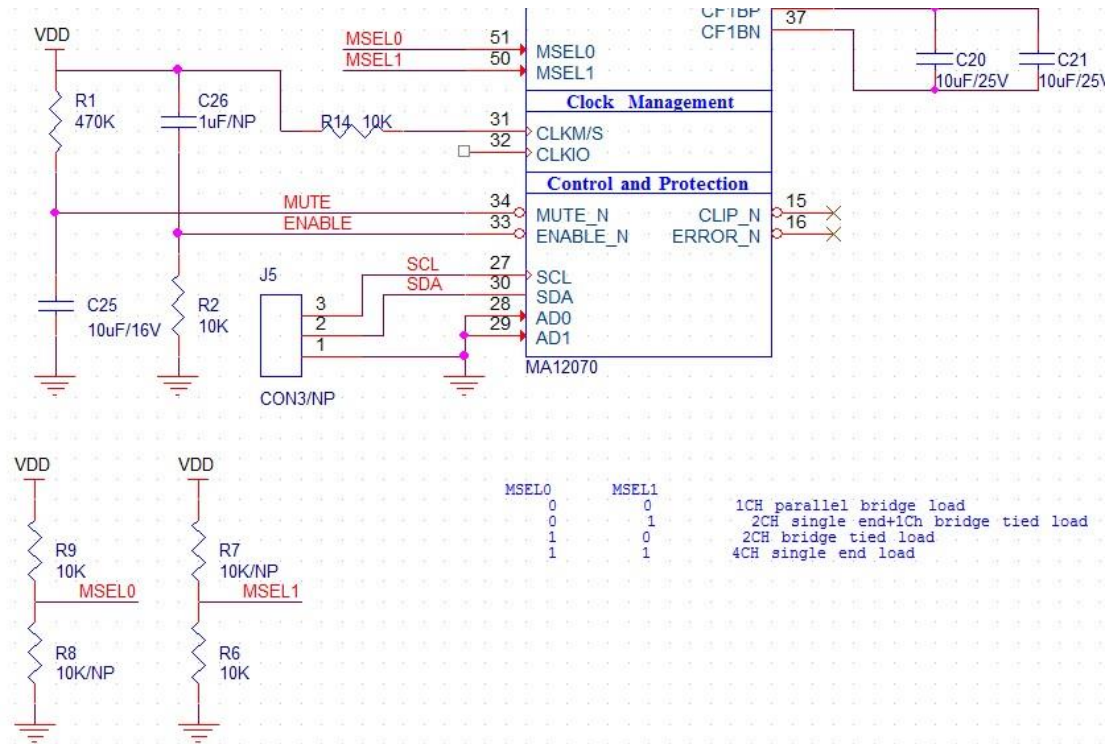


Module V1.5 works in BTL mode by default (2.0) . If you need to modify the working mode of the module, you need to modify several configuration resistors on the board.

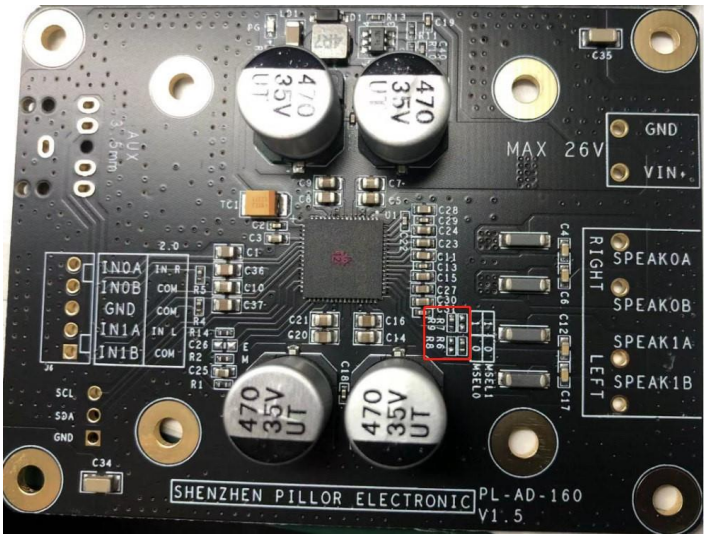
R9 and R8 are configuration MSEL0, R7 and R6 are configuration MSEL1.

MODE	MSEL0	MSEL1	R6	R7	R8	R9
1CH(PBTL*1)	0	0	10K	NP	10K	NP
2CH(BTL*2)	1	0	10K	NP	NP	10K
3CH(BTL*1+SE*2)	0	1	NP	10K	10K	NP
4CH(SE*4)	1	1	NP	10K	NP	10K

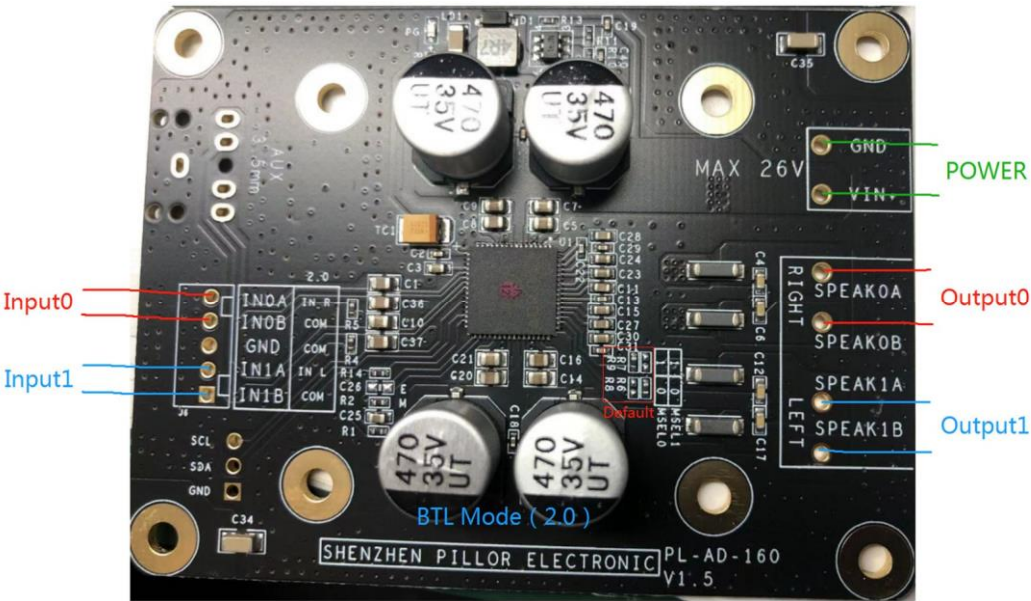
The schematic diagram is as follows:



The physical position of the resistor on the board is as follows:



BTL default (2.0) configuration connection method:



PBTL (1.0) connection method:

