

The home of the turntable

**THE VINYL ENGINE®**

For more turntable manuals and setup information  
please visit [www.vinylengine.com](http://www.vinylengine.com)

# **ROTEL***hi-fi*

---

PHONO EQUALIZER

## **RQ-970BX**

---

# **TECHNICAL MANUAL**

### **TABLE OF CONTENTS**

Chassis Layout.....	1
Wiring Diagram.....	2
Schematic Diagram.....	3
Printed Circuit Board.....	4
PC Board Ass'y Parts List.....	5

**THE ROTEL CO., LTD.**

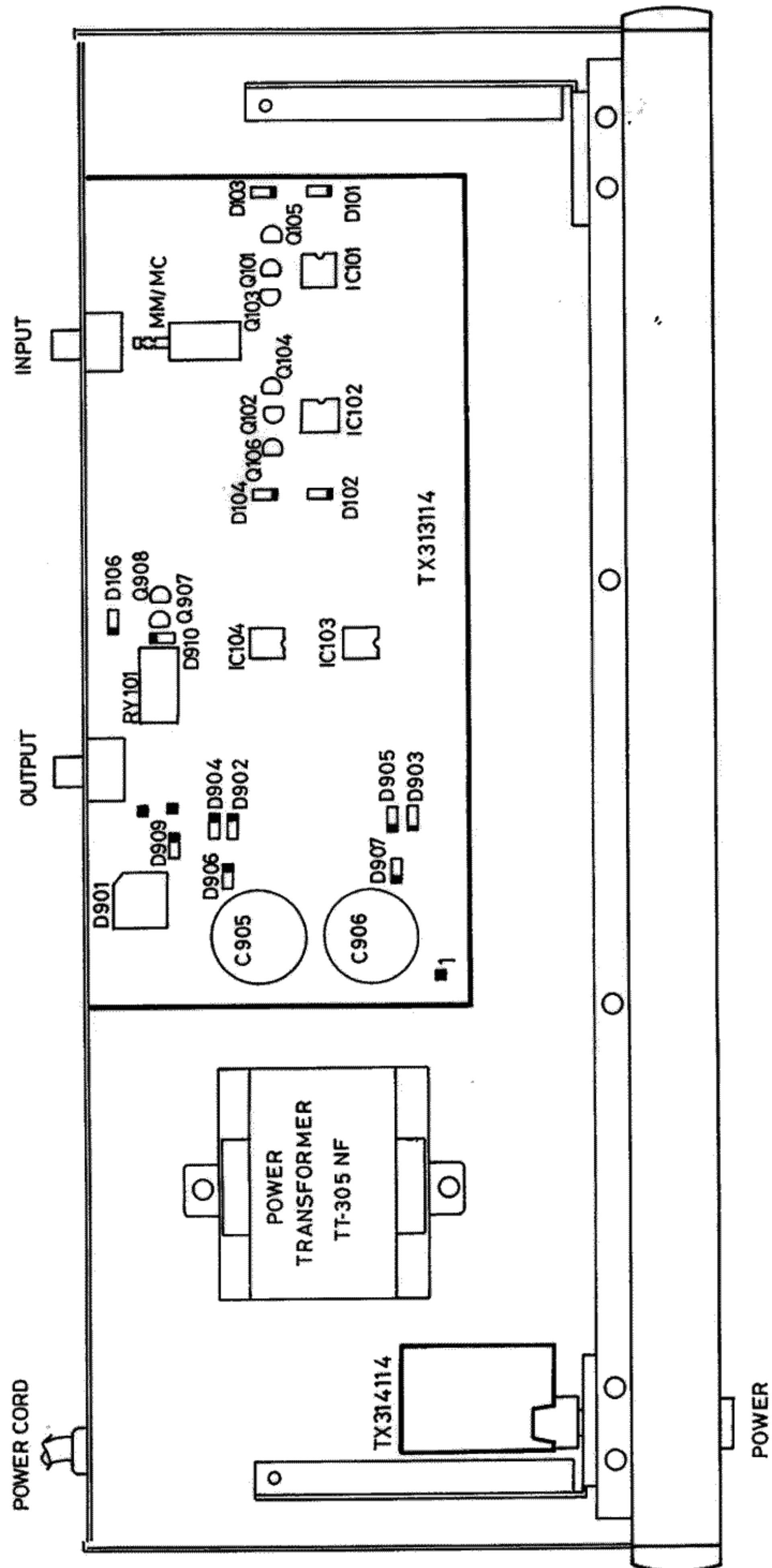
1-36-8, OHOKAYAMA, MEGURO-KU, TOKYO 152, JAPAN

**ROTEL ELECTRONICS CO., LTD.**

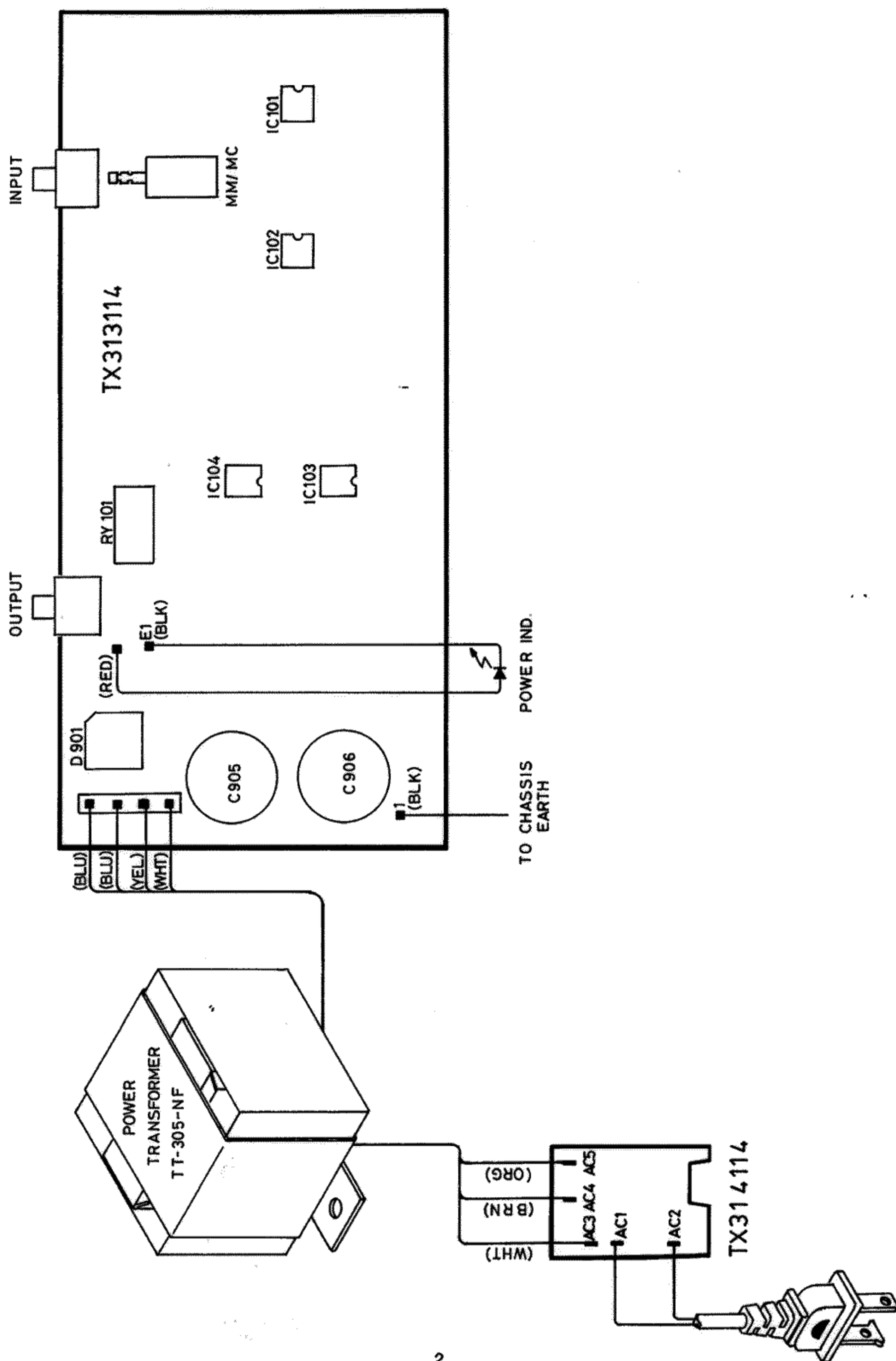
3F-2, NO.35, FU HSING NORTH ROAD, TAIPEI, TAIWAN, REPUBLIC OF CHINA

MN20002164

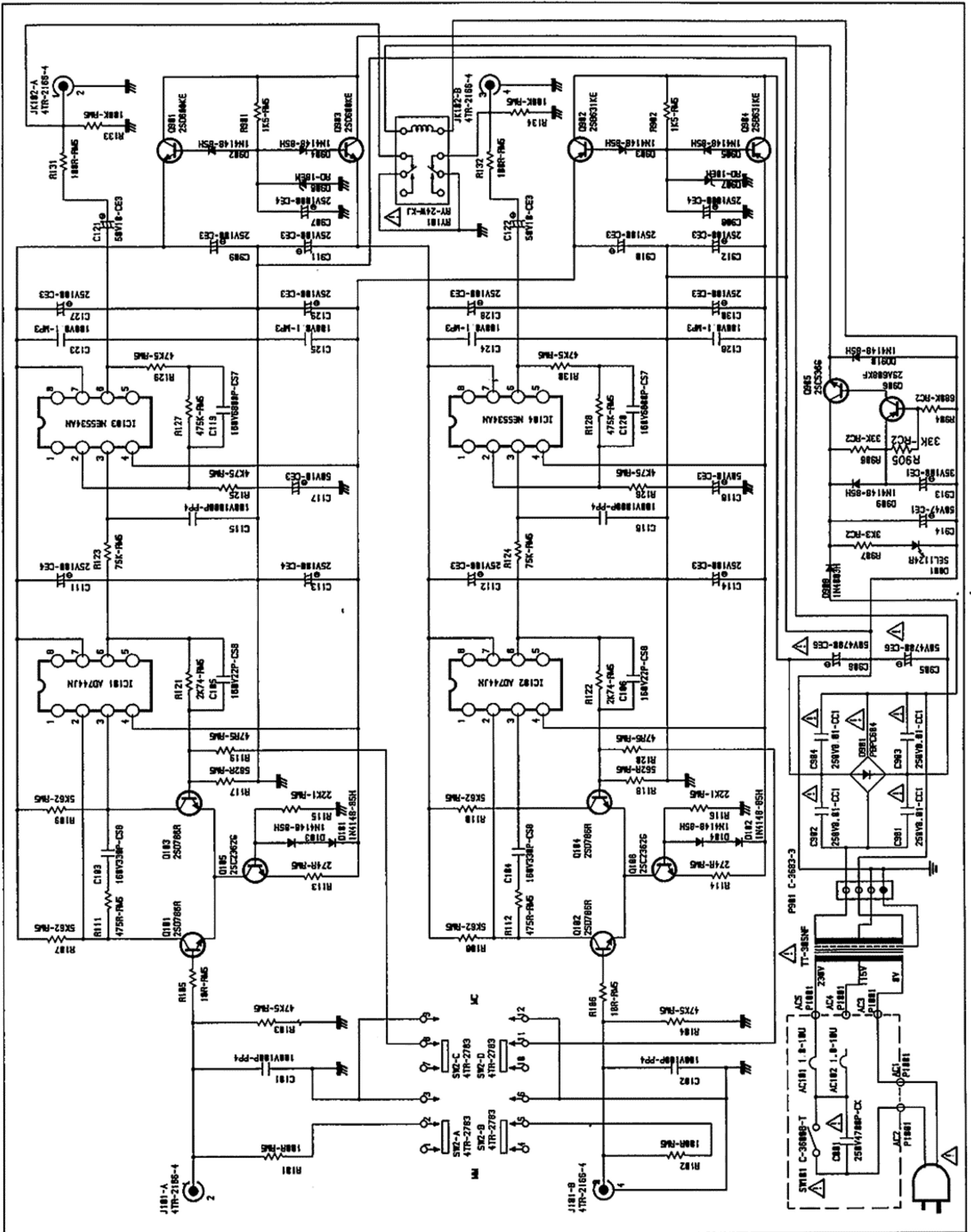
# Chassis Layout



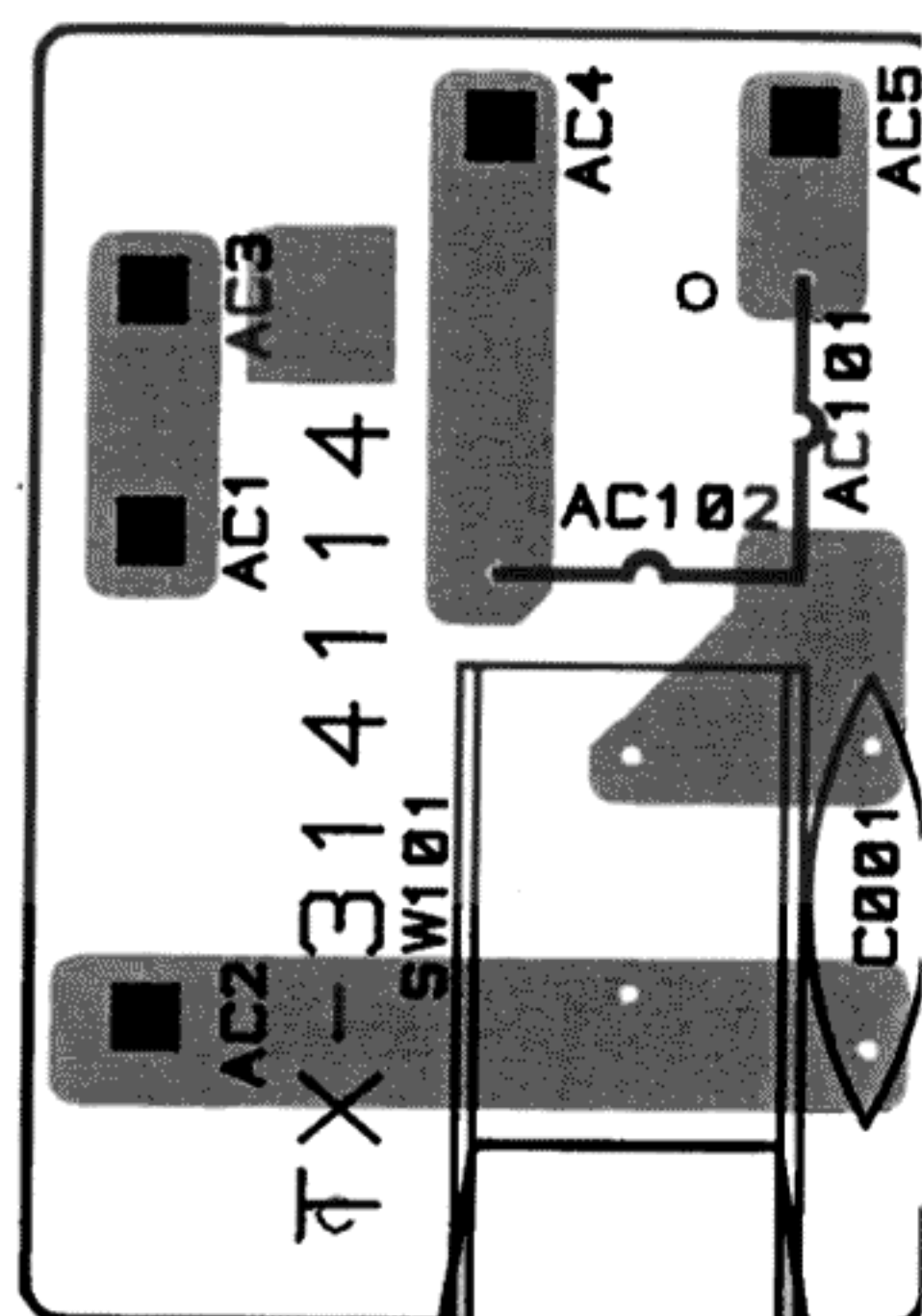
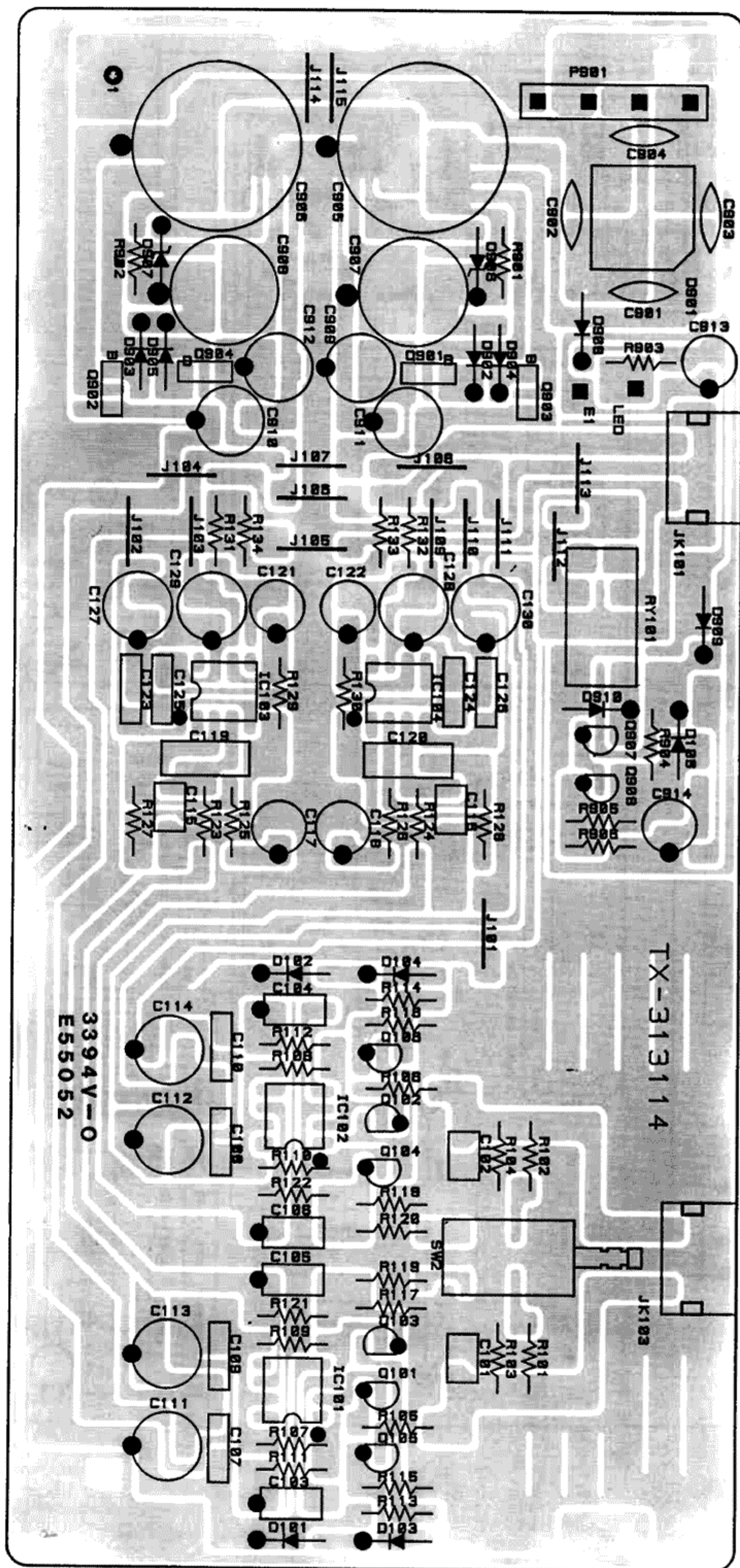
## Wiring Diagram



# Schematic Diagram



## Printed Circuit Boards



# Parts List

NOTE: THE COMPONENTS IDENTIFIED BY  $\Delta$  MARK ARE FOR SAFETY. REPLACE ONLY WITH ORIGINAL PARTS. DO NOT SUBSTITUTE.

SYMBOL	PARTS NO.	DESCRIPTION	SYMBOL	PARTS NO.	DESCRIPTION
TX313114 PCB ASSEMBLY			SC00000027	AC CORD STOPPER SR-4N-4 $\Delta$	
R101,102	RM81000619	R,METAL MK2100RFECZ.	CD00000218	AC CORD SPT-2 AWG#18 4TR-670#4 (U,C,A,J) $\Delta$	
R103,104	RM84752616	R,METAL MK247K5FECZ.			
R105,106	RM81009611	R,METAL MK2010RFECZ.	CD00000322	AC POWER CORD 4TR-2757(D) $\Delta$	
R107-110	RM85621610	R,METAL MK25K62FECZ.	CD00000048	AC POWER CORD 4TR-1037 (H,E,Y,S1) $\Delta$	
R111,112	RM84750619	R,METAL MK2475RFECZ.	CD00000085	AC POWER CORD C-2504A(K1) $\Delta$	
			CD00000115	AC POWER CORD C-3763-T (G1) $\Delta$	
R113,114	RM82740611	R,METAL MK2274RFECZ.			
R115,116	RM82212618	R,METAL MK222K1FECZ.	NP00001949	NAME STICKER ROTEL-120V TNP-382	
R117,118	RM85620616	R,METAL MK2562RFECZ.	NP00001962	NAME STICKER ROTEL-240V TNP-384	
R119,120	RM84759611	R,METAL MK247R5FECZ.	NP00001998	NAME STICKER ROTEL-230V TNP-389	
R121,122	RM82741615	R,METAL MK22K74FECZ.	NP00002012	NAME STICKER ROTEL-100V TNP-391	
			NP00001950	NAME STICKER ROTEL-220V TNP-383	
R123,124	RM87502611	R,METAL MK2075KFECZ.			
R125,126	RM84751612	R,METAL MK24K75FECZ.	AA70000113	FRONT PANEL 2TPD-1 TFP-713	
R127,128	RM84753610	R,METAL MK2475KFECZ.	BU00001145	POWER RING W/LED 4TQF-13 14x14	
R129,130	RM84752616	R,METAL MK247K5FECZ.	KB20002681	POWER BUTTON 4TQF-15 14x14	
R131,132	RM81000619	R,METAL MK2100RFECZ.	OM10001260	ORNAMENTAL SIDE BOARD 4TR-2797#1	
			DD40000095	L.E.D SEL1124R	
R133,134	RM81003610	R,METAL MK2100KFECZ.			
C101,102	CP71011353	CAP,P.P 100V 100P	OM70000065	PUSH BUTTON CONNECTOR 4TTL-15	
C103,104	CS33311310	CAP,POLYSTYRENE 160V 330P	SN00000179	BUTTON SPRING 4TR-1988A#2 10F	
C105,106	CS32212300	CAP,POLYSTYRENE 160V 22P	AU00001389	TOP COVER QN3-03A02T	
C111-114	CE51005679	CAP,ELEC. 25BGF100M	SR00000882	UPPER COVER SPACER 4TR-2418	
			PL00001270	STYROL SIDE MOULDING 3TR-3034 TZ-192	
C115,116	CP71010300	CAP,P.P 100V 1000P			
C117,118	CE51006477	CAP,ELEC. 50BGF10M			
C119,120	CS36810300	CAP,POLYSTYRENE 160V 6800P			
C121,122	CE51006477	CAP,ELEC. 50BGF10M			
C123-126	CP61008321	CAP,M.P. 100V 0.1uF			
C127-130	CE51005679	CAP,ELEC. 25BGF100M			
D101-106	DD10000100	DIODE IN4148-85			
Q101-104	TR40000100	TRANSISTOR 2SD786R/S			
Q105,106	TR30000212	TRANSISTOR 2SD2362F			
IC101,102	IC00003525	IC AD744JN			
IC103,104	IC00001735	IC NE5534AN			
RY101	LY00000277	RELAY RSB-24-S			
R901,902	RM81501610	R,METAL MK201K5FECZ.			
R903	RD23301820	R,CARBON 3.3K 1/4W J			
R904,905	RD23902827	R,CARBON 39K 1/4W J			
R906	RD26803824	R,CARBON 680K 1/4W J			
C901-904	CC01009256	CAP,CERAMIC 250V 0.01uF $\Delta$			
C905,906	CE64704449	CAP,ELEC. LGS1H472MHS			
C907,908	CE71004255	CAP,ELEC. 25V 1000uF			
C909-912	CE51005679	CAP,ELEC. 25BGF100M			
C913	CE04706508	CAP,ELEC. 50V 47uF			
C914	CE01005350	CAP,ELEC. 35V 100uF			
D901	DD10000380	DIODE BRIDGE PBPC604 $\Delta$			
D902-905	DD10000100	DIODE IN4148-85			
D906,907	DD20000041	DIODE RD-18E			
D910	DD10000100	IN4148-85			
Q901	TR40000069	TRANSISTOR 2SD600KE/KF			
Q902,904	TR10000047	TRANSISTOR 2SB631KE/KF			
Q903	TR40000069	TRANSISTOR 2SD600KE/KF			
Q907	TR30000327	TRANSISTOR 2SC536G-NP			
Q908	TR10000126	TRANSISTOR 2SA608KF/KG			
SW2	SH11000367	1 KEY PUSH SW 4TR-2783 4U			
JK101,103	JP02000211	2P PIN JACK 4TR-2166-4			
TX314114 PCB ASSEMBLY					
C001	CK00000035	SPARK KILLER DE7150F472M $\Delta$			
SW101	SH40000120	POWER SW C-3600B-T $\Delta$			
OTHERS					
AM00002165		PRINTED CHASS.BODY 2TPD-2B			
KB20002747		PUSH BUTTON PR4-07A00T 5F			
PT30510108		POWER TRANSFORMER TT-305-NF. 1			
FT00000230		FOOT (PU) 4TR-2823#1 24Fx14H			
SP10006818		PANEL SUPPORT (L) QN4-04A00T			
SP10006820		PANEL SUPPORT (R) QN4-05A00T			