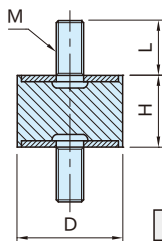


VD1

RUBBER VIBRATION DAMPER (STUD / STUD)



Original ELESА Model DVA



Type	Body	Threaded Part
VD1	Natural Rubber Shore A55+/-5	SS400 Steel Zinc plated
VD1-SUS	Black	SUS304 stainless steel

Steel Part Number	Stainless Steel Part Number	D	H	M	L	Max. load (N)	Max. deflection (mm)	Spring constant (N/mm)	Weight (g)
VD1-0808M 3	VD1-0808M 3-SUS	8	8	M 3×0.5	6	85	2	43	1
VD1-1010M 4	VD1-1010M 4-SUS	10	10	M 4×0.7	10	100	2.5	40	2
VD1-1015M 4	VD1-1015M 4-SUS	15	15				3.75	26	3
VD1-1508M 4	VD1-1508M 4-SUS	8	8			537	2	269	5
VD1-1510M 4	VD1-1510M 4-SUS	15	10	M 4×0.7	10	325	2.5	130	6
VD1-1515M 4	VD1-1515M 4-SUS	15	15			280	3.75	75	7
VD1-1520M 4	VD1-1520M 4-SUS	20	20			234	5	47	8
VD1-2015M 6	VD1-2015M 6-SUS	20	15	M 6×1	18	479	3.75	128	18
VD1-2020M 6	VD1-2020M 6-SUS	25	20			430	5	86	25
VD1-2025M 6	VD1-2025M 6-SUS	25	25			433	6.25	69	20
VD1-2515M 6	VD1-2515M 6-SUS	25	15	M 6×1	18	1068	3.75	285	28
VD1-2520M 6	VD1-2520M 6-SUS	30	20			620	5	124	31
VD1-2525M 6	VD1-2525M 6-SUS	30	25			529	6.25	85	35
VD1-2530M 6	VD1-2530M 6-SUS	30	30			524	7.5	70	38
VD1-3015M 8	VD1-3015M 8-SUS	30	15	M 8×1.25	20	2080	3.75	555	45
VD1-3020M 8	VD1-3020M 8-SUS	40	20			1067	5	213	50
VD1-3030M 8	VD1-3030M 8-SUS	40	30			1055	7.5	141	57
VD1-4020M 8	VD1-4020M 8-SUS	40	20	M 8×1.25	23	2430	5	486	80
VD1-4030M 8	VD1-4030M 8-SUS	50	30			1574	7.5	210	95
VD1-4040M 8	VD1-4040M 8-SUS	50	40			1397	10	140	100
VD1-5020M10	VD1-5020M10-SUS	50	20	M10×1.5	28	4100	5	820	130
VD1-5030M10	VD1-5030M10-SUS	50	30			3300	7.5	440	184
VD1-5040M10	VD1-5040M10-SUS	50	40			2130	10	213	170
VD1-5045M10	VD1-5045M10-SUS	50	45			2046	11.25	182	180
VD1-5050M10	VD1-5050M10-SUS	50	50			2188	12.5	175	195

Reference

For product detail and notes for your choice, see "Instructions for choice and use of rubber vibration damper".