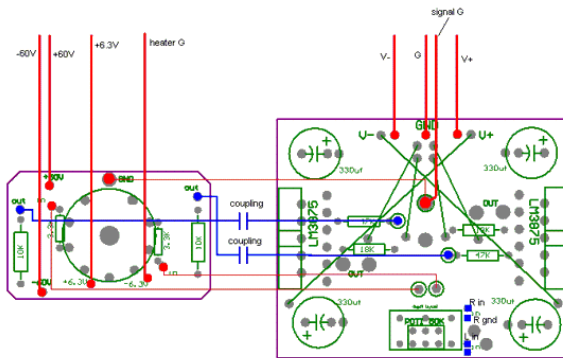


boards top view

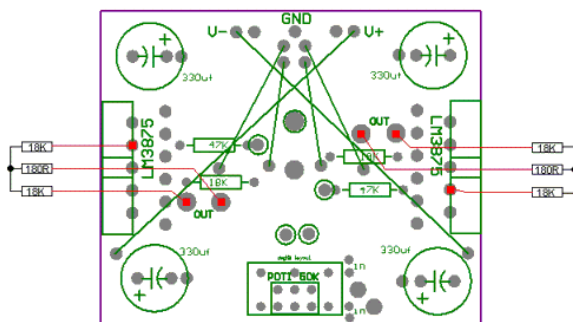


This image shows you how to connect the Tube board to the amplifier board

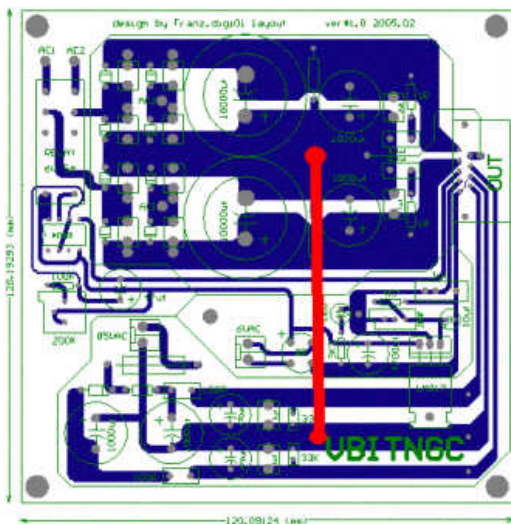
NOTE: R-in and R-gnd need to be swapped!

AMP BOARD TOP VIEW

The T network connection, set up at the bottom side



In this image you can see how to implement the T-Network on the amplifier board. You can just solder the resistors on the copper side of the PCB.



This is a last minute suggestion from Franz. To avoid any hum, connect the ground planes of the high current and low current as suggested in the image

I hope that with this guide everybody will be able to finish there project to a good end. Thanks to Franz, Zang, Wim and Hanzwillem for pointing out to the errors and come up with solutions.