

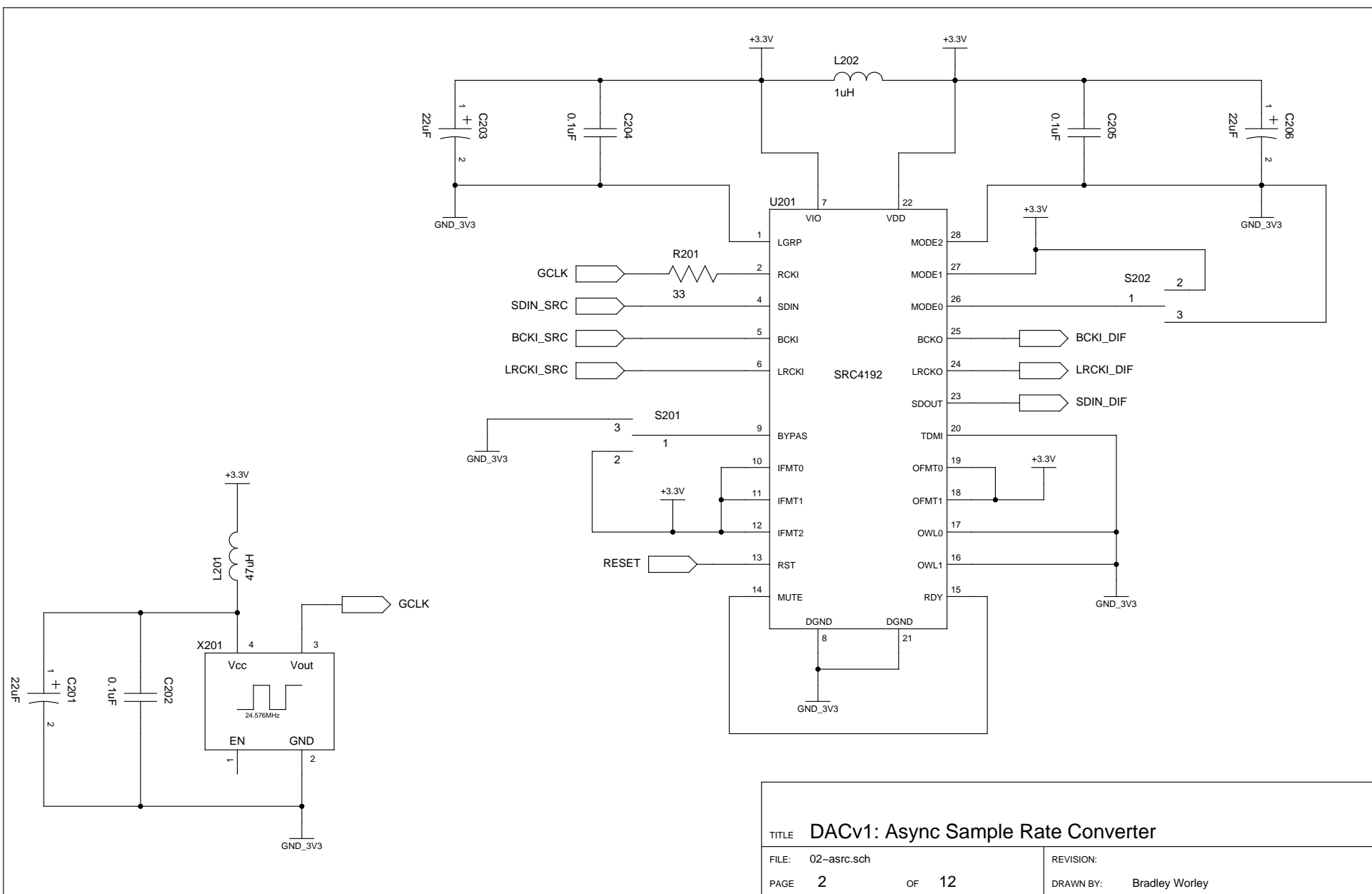
TITLE DACv1: TOSLINK Input and Receiver

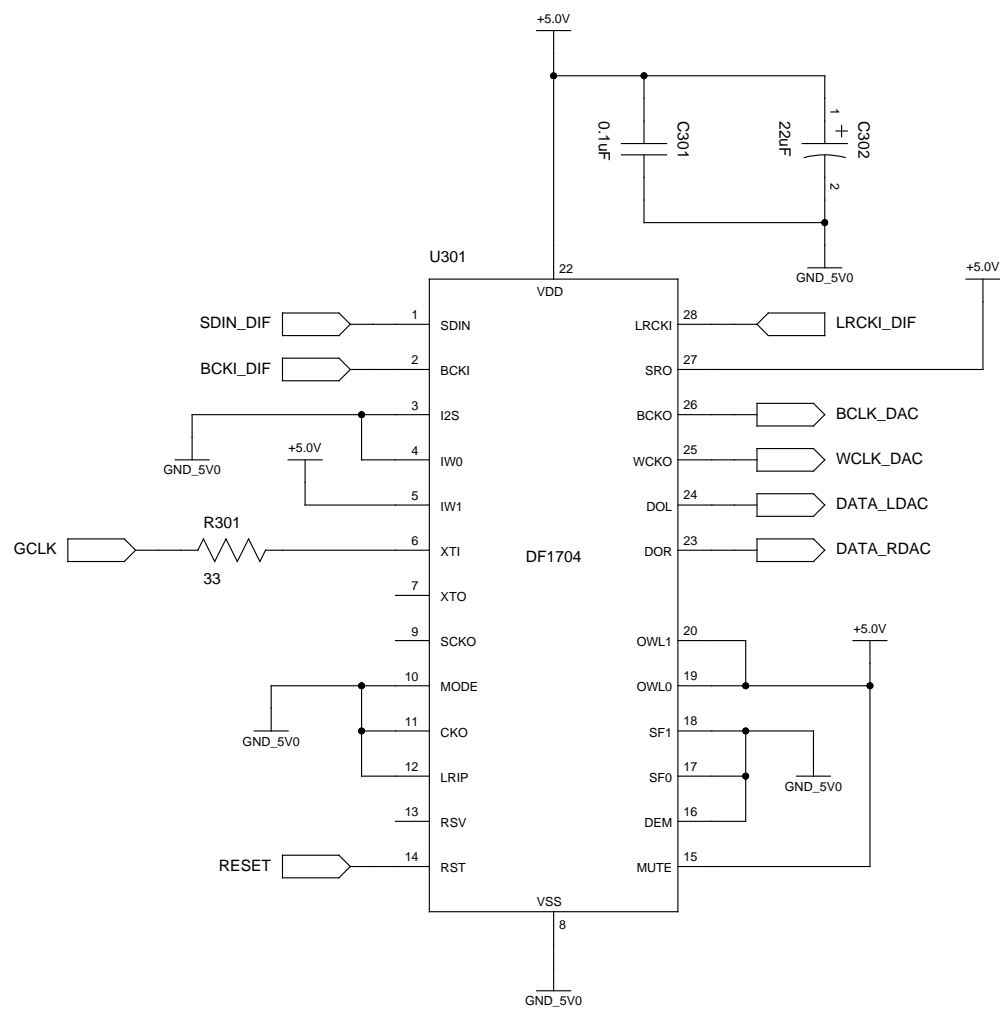
FILE: 01-input.sch

REVISION:

PAGE 1 OF 12

DRAWN BY: Bradley Worley





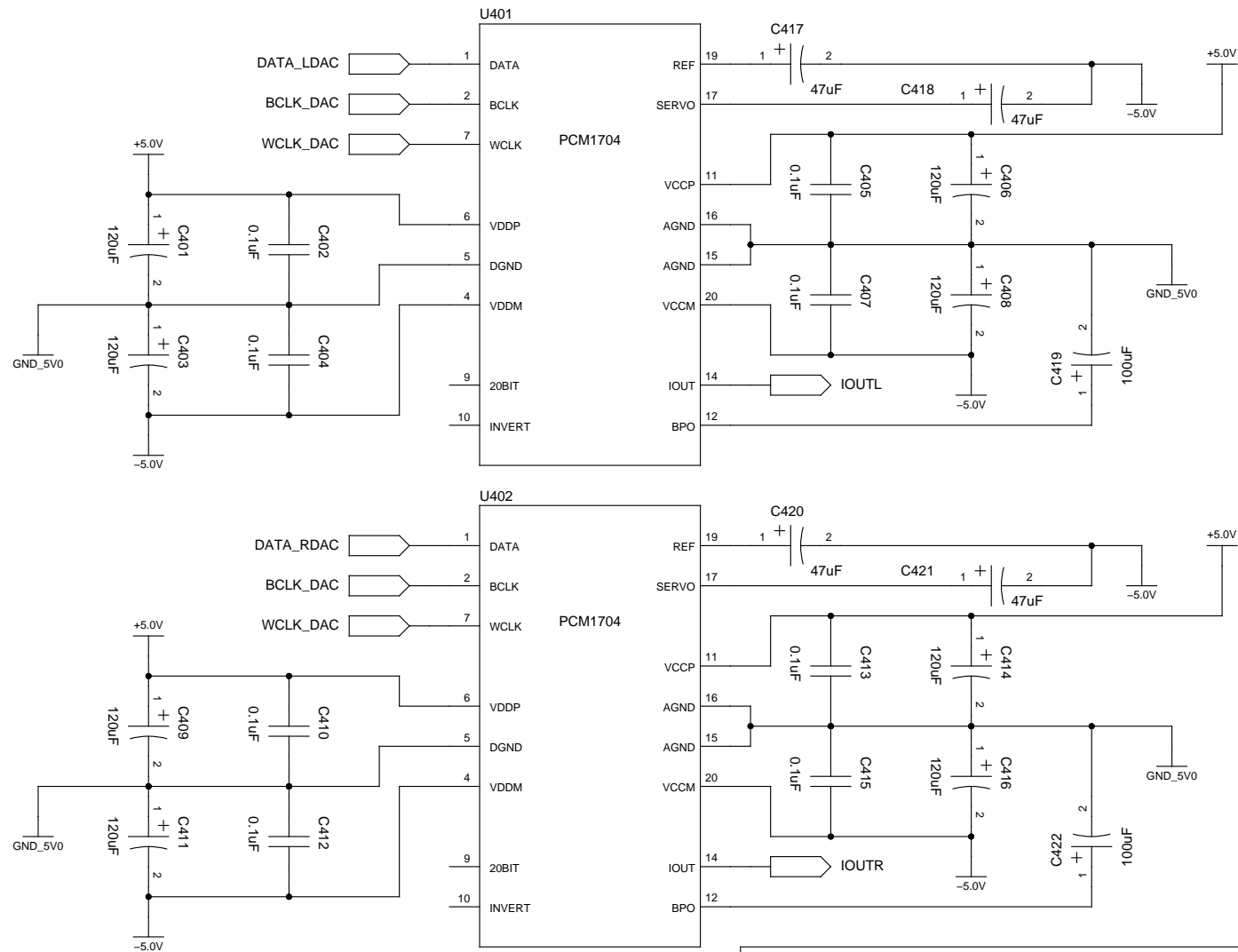
TITLE DACv1: Digital Interpolation Filter

FILE: 03-filter.sch

REVISION:

PAGE 3 OF 12

DRAWN BY: Bradley Worley



TITLE DACv1: Digital-to-Analog Converters

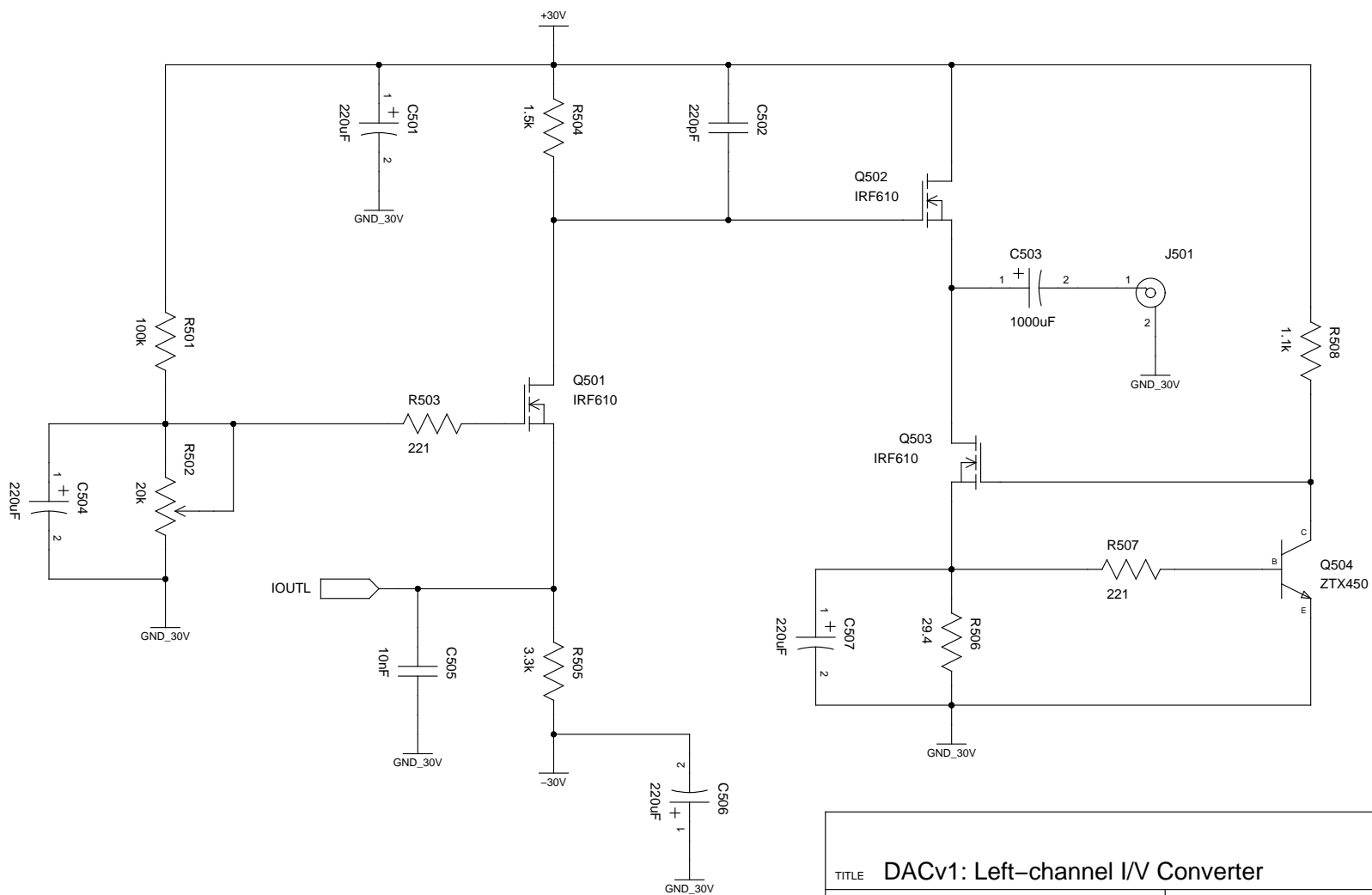
FILE: 04-dacs.sch

REVISION:

PAGE 4

OF 12

DRAWN BY: Bradley Worley



TITLE DACv1: Left-channel I/V Converter

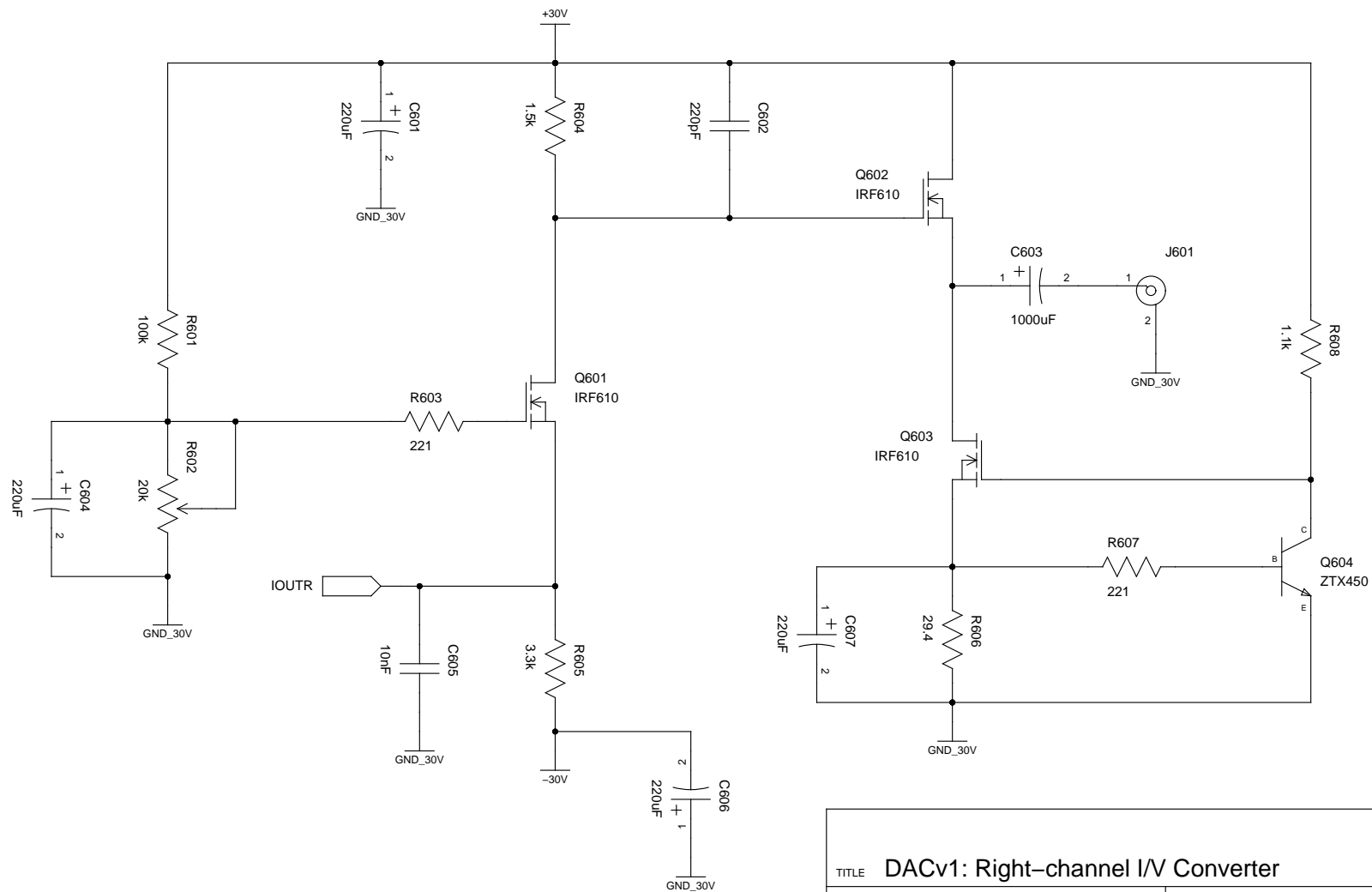
FILE: 05-ivleft.sch

REVISION:

PAGE 5

OF 12

DRAWN BY: Bradley Worley



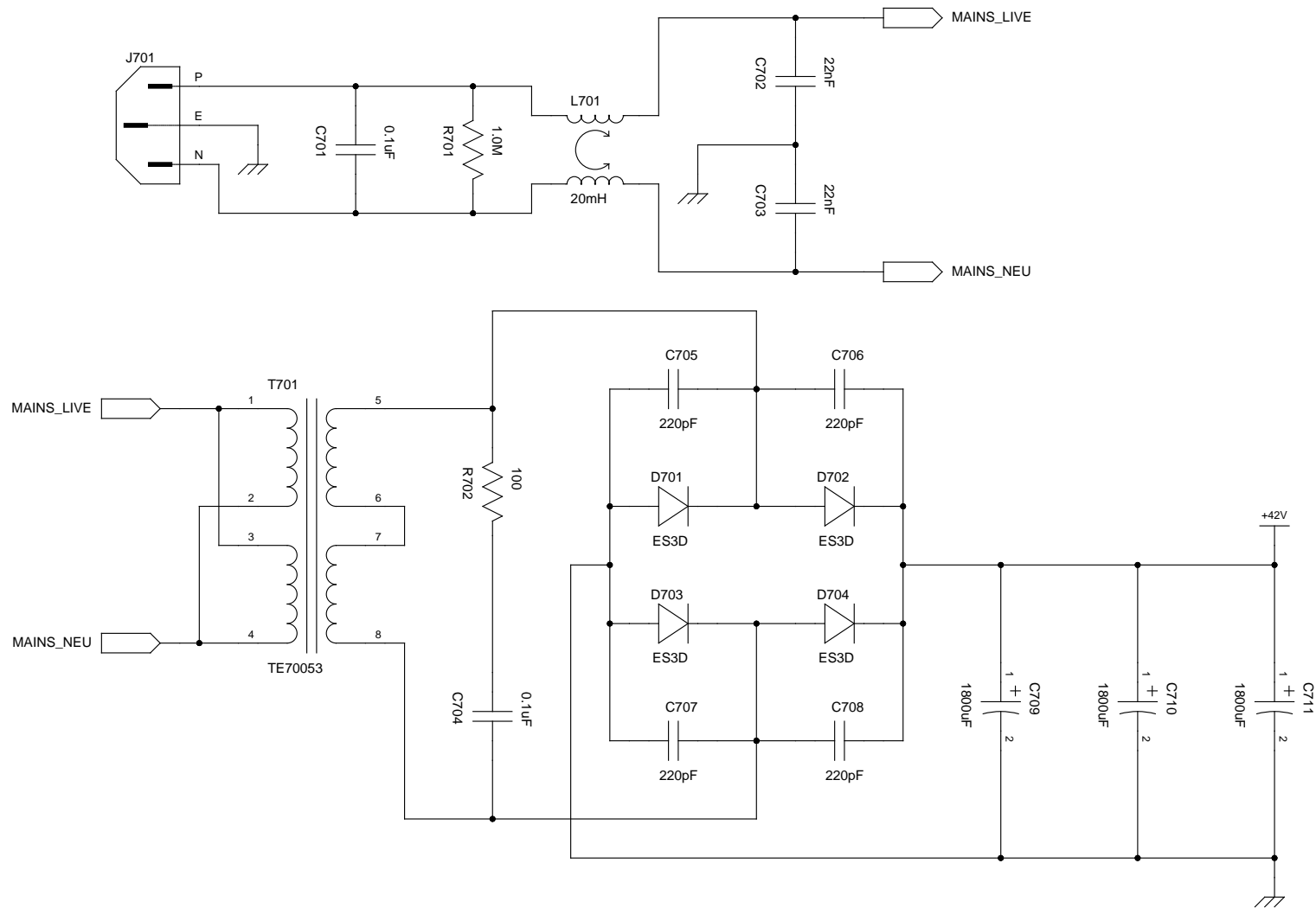
TITLE DACv1: Right-channel I/V Converter

FILE: 06-ivright.sch

REVISION:

PAGE 6 OF 12

DRAWN BY: Bradley Worley



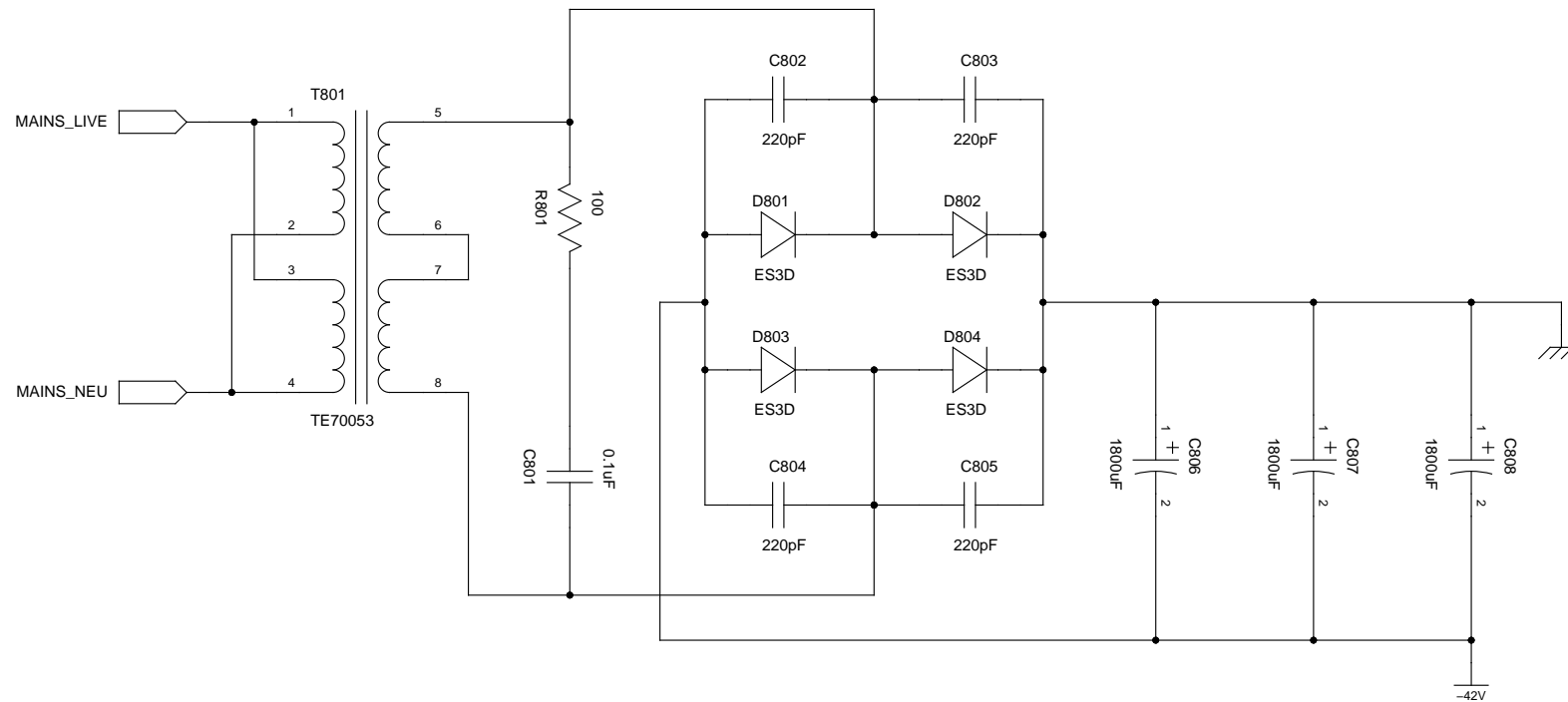
TITLE DACv1: +30Vdc Power Supply

FILE: 07-ivpsu-pos.sch

REVISION:

PAGE 7 OF 12

DRAWN BY: Bradley Worley



TITLE **DACv1: -30Vdc Power Supply**

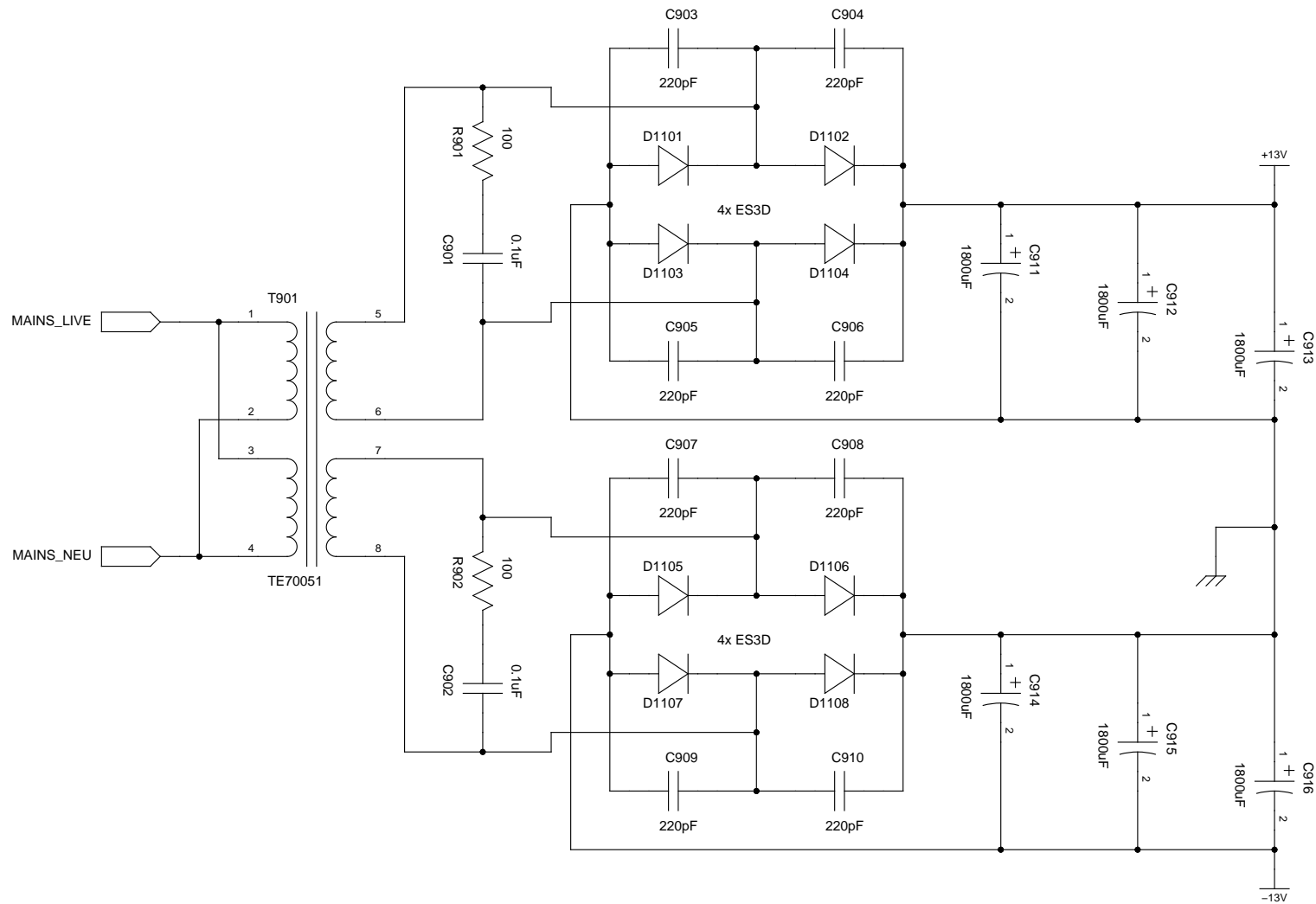
FILE: 08-ivpsu-neg.sch

REVISION:

PAGE **8** OF **12**

DRAWN BY: **Bradley Worley**





TITLE DACv1: +/-5Vdc, +3.3Vdc Power Supply

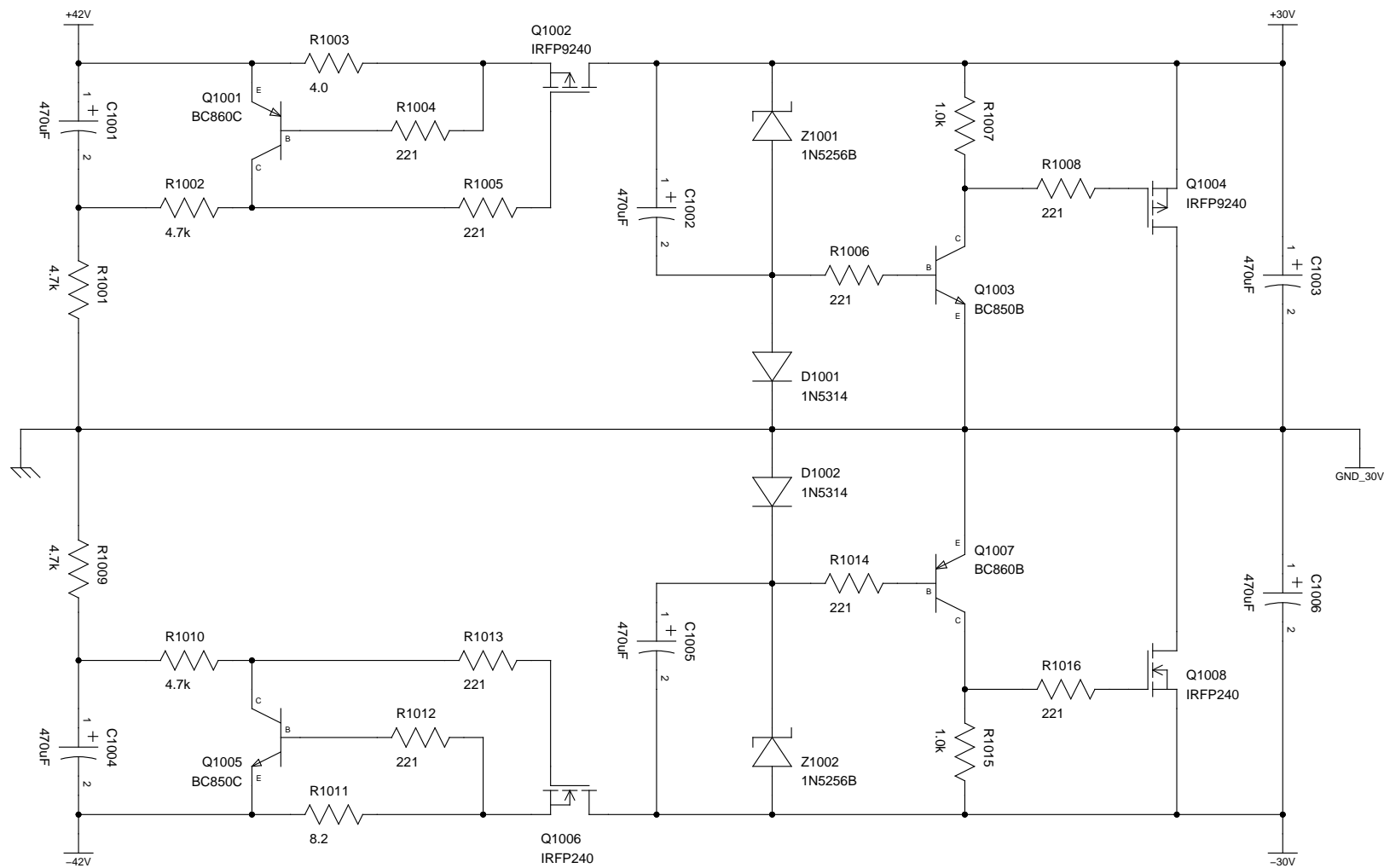
FILE: 09-lvpsu.sch

REVISION:

PAGE 9

OF 12

DRAWN BY: Bradley Worley



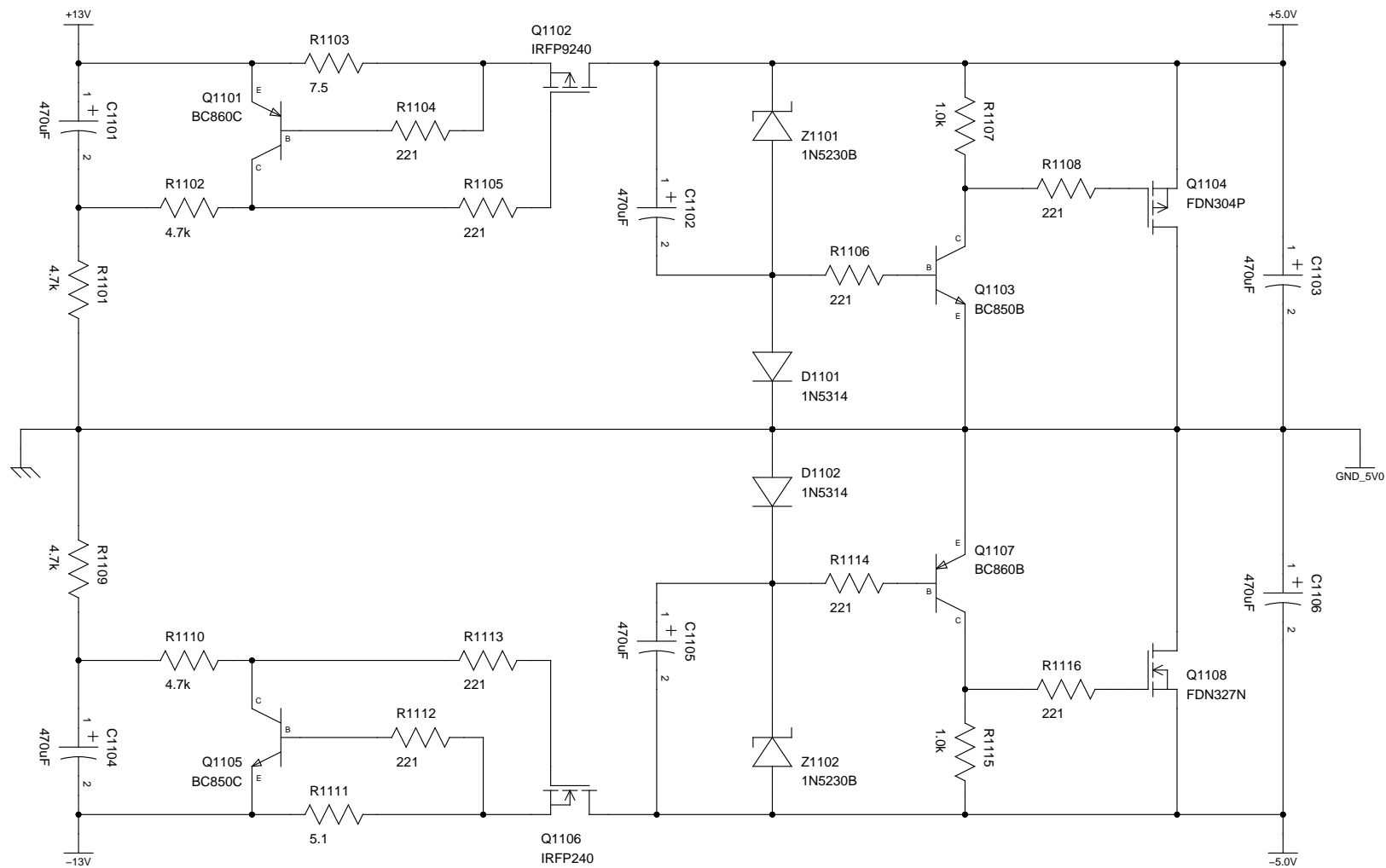
TITLE DACv1: +/-30Vdc I/V Linear Regulator

FILE: 10-ivreg.sch

REVISION:

PAGE 10 OF 12

DRAWN BY: Bradley Worley



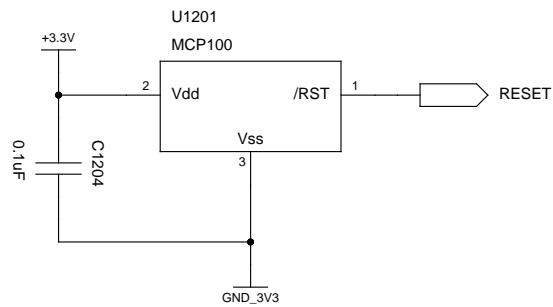
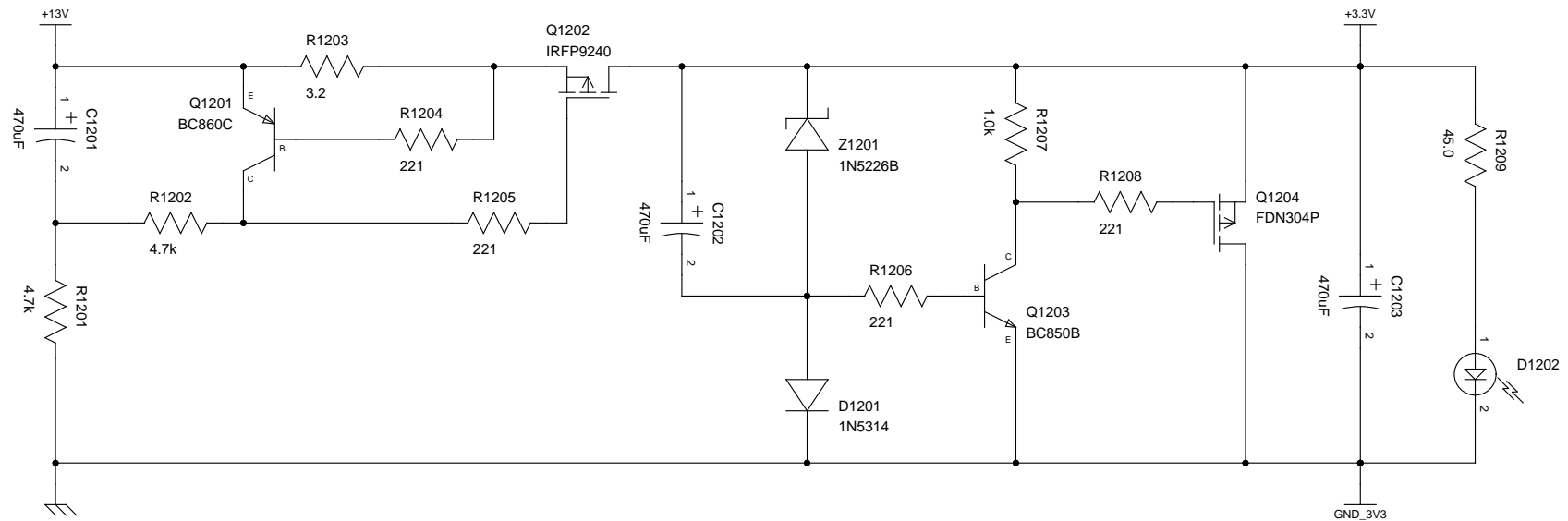
TITLE DACv1: +/-5Vdc DAC Linear Regulator

FILE: 11-lvreg-5.0v

REVISION:

PAGE 11 OF 12

DRAWN BY: Bradley Worley



TITLE DACv1: +3.3Vdc DAC Linear Regulator

FILE: 12-lvreg-3.3v.sch

REVISION:

PAGE 12 OF 12

DRAWN BY: Bradley Worley