

USER MANUAL FOR REMOTE VOLUME CONTROLLER

DOC version 1.0

1. About the kit

This is a remote controller for audio volume control based on high quality passive potentiometer ALPS RK168 series. With this kit, you can make the source select and stereo single-end volume control easy.

Contains:

Main board 1 SET

Source selector board 1 SET

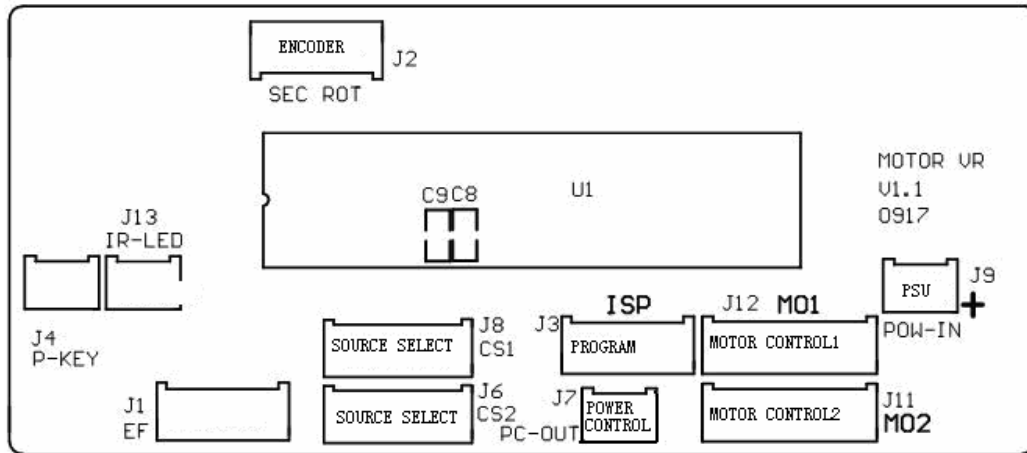
Motor Potentiometer board 1 SET

Cables

Remote handset



2. Description for the main board



J1-EF: optional connector

J2-SEC ROT: connector for encoder

J3-ISP: connector for program

J4-P-KEY: POWER SWITCH

J6-J8-CS1/CS2: connector for input source select, they are the same

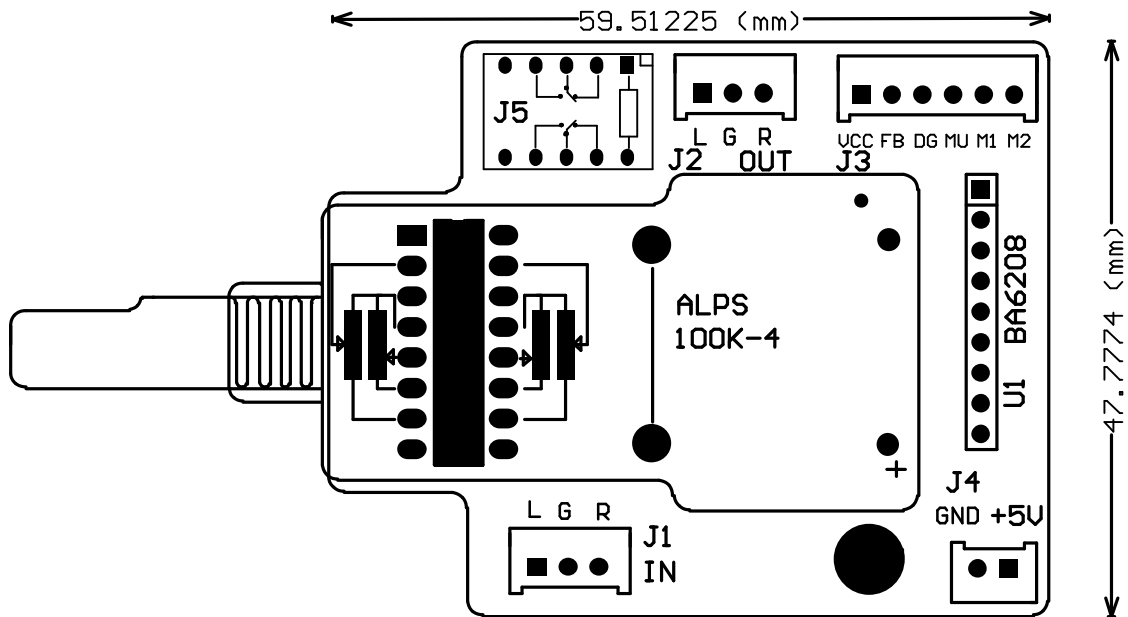
J7-PC-OUT: power control output. The DC level is low when power the main board up

J11-J12-MO1/MO2: connector for motor potentiometer. Please connect the motor to J11-MO1

J9-POW-IN: power supply input for main board, DC 7~12V 0.5A PSU is required

J13-IR-LED: display LED, the LED will on when the remote handset pressed. The pin near MCU is the positive for LED

3. Description for Motor Potentiometer board



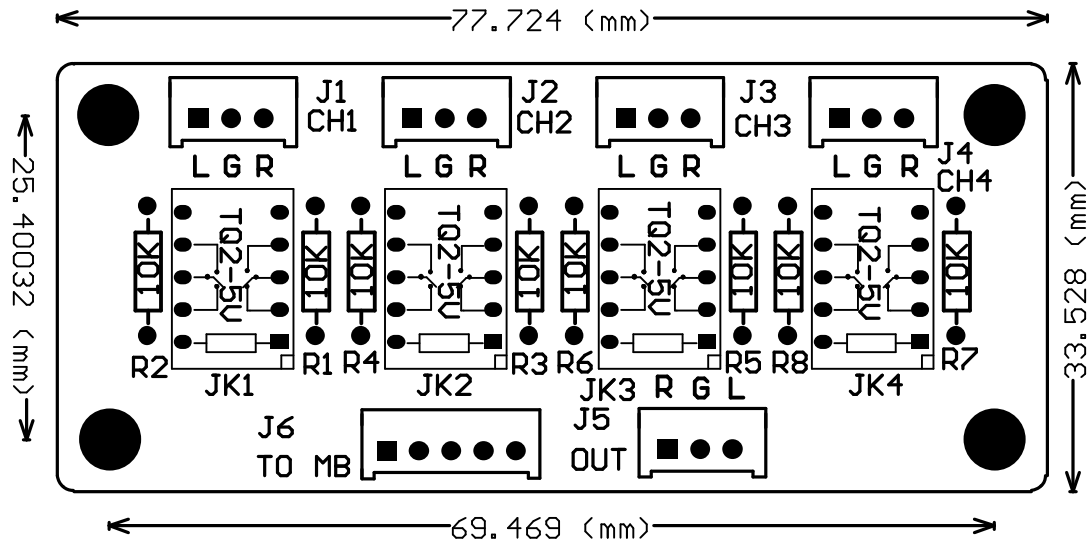
J1-IN: audio input

J2-OUT: audio output

J3: connector for control signal, please connect it to J11-MO1 on the main board

J4: power supply input for Motor, a DC 5V 0.5A PSU is required

4. Description for Source selector board



J6: connector for control signal, please connect it to J6-CS2 or J8-CS1

J1-J2-J3-J4: audio input

J5: audio output, please connect it to J1-IN on the Motor potentiometer board

Start to work:

- 1.The kit will not work unless you press the botton on the remote handset or POWER SWICTH**
- 2.After step 1, the volume potentiometer will reset and the DC level of J7-PC-OUT will turn low**
- 3.You can rotate the encoder or press keys on remote handset to change the input sources**
- 4. volume control, manual and remote**
- 5.power down. The kit will turn to standby when you press the power botton on remote handset or POWER SWITCH again, at this time, J7-PC-OUT will turn high level DC out.**

Suggestions:

Make sure the configuration is correct, then turn on the power.

Make sure is PSU is in good condition, separate the GND of audio and motor volume potentiometer

Shield the case of the MOTOR



Please drop me an email ^_^

bbp6604560@hotmail.com

Thank you