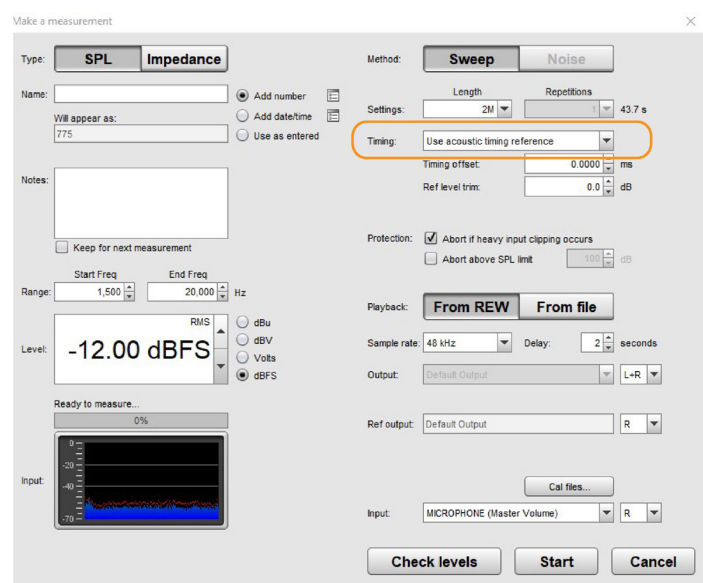
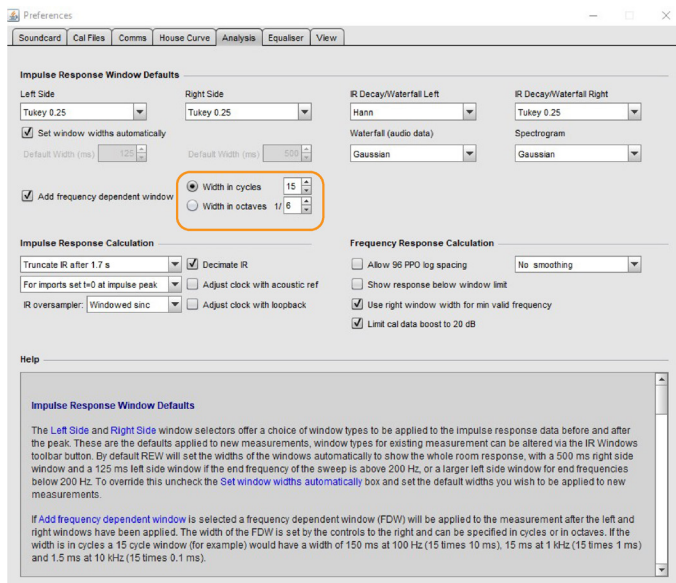


REW average measurements and impulse correction rePhase

- Tutorial is meant to be use for speakers/ drivers implementation in to your listening area. Integrating impulse corrected filter for your DSP device with or with out "room curve" . "Room curve" bases is Bruel and Kajer work in room acoustics: <https://www.bksv.com/media/doc/17-197.pdf> Goal is to produce the best possibly sounding speakers /drivers for your room.
- Taking a measurements point microfon's tip vertically ,towards sealing and use 90° calibration file for your mikrofon, resulting much better measuring results for REW.

1.REW Preferences



1/6th octave smoothing and 15 cycles FDW to generate the correction filters and avoid 'micro-managing' the amplitude and phase corrections.

Timing reference activated.

2. Room curve

Data used to make "room curve" can be imported to REW as a text file or using "target settings" in REW.

"EQ" -> "target settings" -> activate "Add room curve".

It could take to do same tuning to reach desired result and this task is up to you. Settings in a pictures it is just guide line/staring point. Assuming you following this tutorial and goal is to implement "room curve" with impulse corrected filter for your DSP device. Then, "Equalizer" choose "rePhase", because we will end up with producing FIR filter in rePhase software for your device.



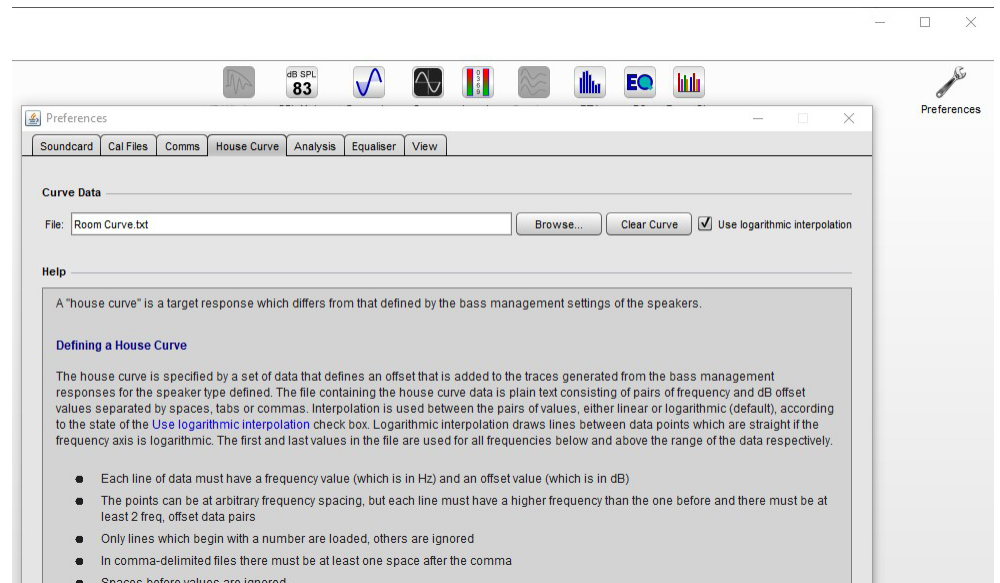
Importing text file into the REW software.

First you must make text file. Copy digits and paste in to your text editor and save it as txt file with a name (free choice) :

25.198 0.000
31.748 -0.001
40.000 -0.005
50.397 -0.016
63.496 -0.039
80.000 -0.079
100.794 -0.134
126.992 -0.203
160.000 -0.290
201.587 -0.397
253.984 -0.528
320.000 -0.683
403.175 -0.866
507.968 -1.087
640.000 -1.351
806.349 -1.651
1015.937 -1.972
1280.000 -2.302
1612.699 -2.634
2031.873 -2.967
2560.000 -3.300
3225.398 -3.634
4063.747 -3.967
5120.000 -4.300
6450.796 -4.634
8127.493 -4.967
10240.000 -5.301
12901.592 -5.634
16254.986 -5.967
20480.000 -6.301
22050.000 -6.301

Then saved file import to REW.

"Preferences" -> "House Curve" -> "Browser" find your saved file and import it.



This room curve based on Bob Katz' recommendations, diyAudio forum.

0 -90.0
5 -6
6 -3
7.5 -1
10 -0.1
20 0.0
50 0.0
100 -1
200 -2
400 -3.0
800 -4.0
1000 -4.2
2000 -4.7
3200 -5.3
6400 -6.5
12800 -7.5
19200 -8
22050 -10

This room curve based on "fluid" recommendations, diyAudio forum.