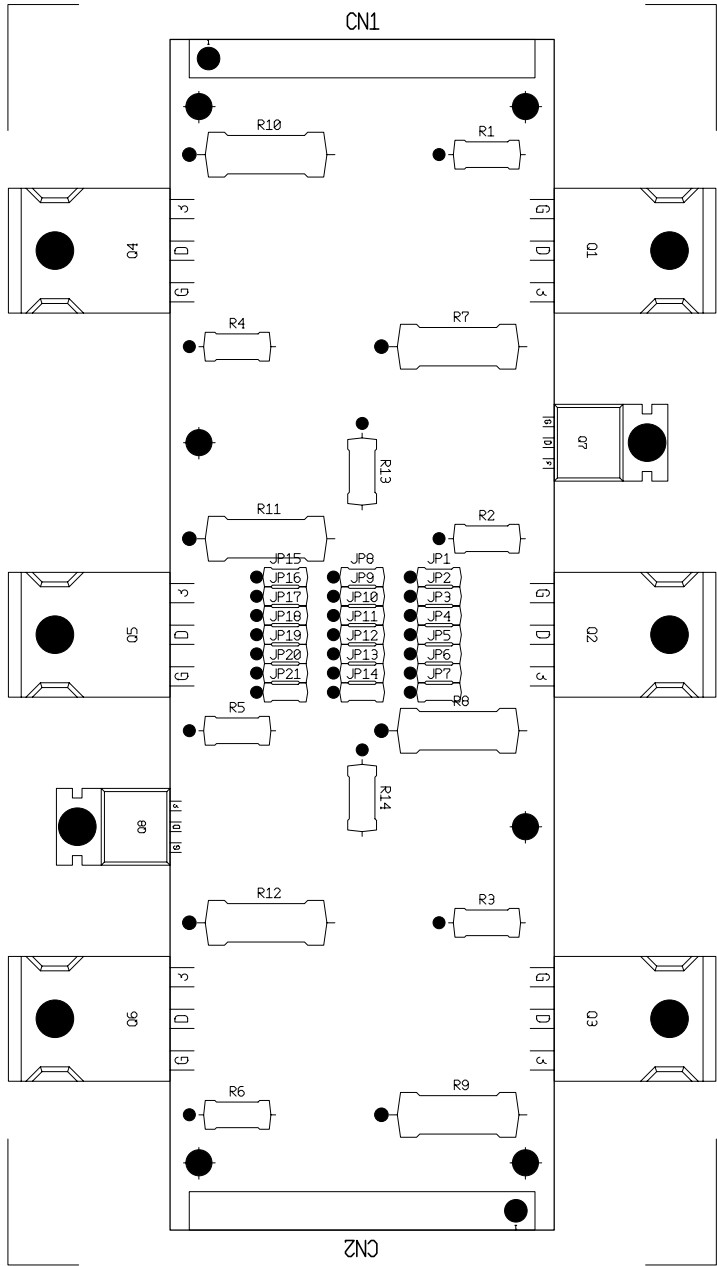


ULTIboard
PCB Design

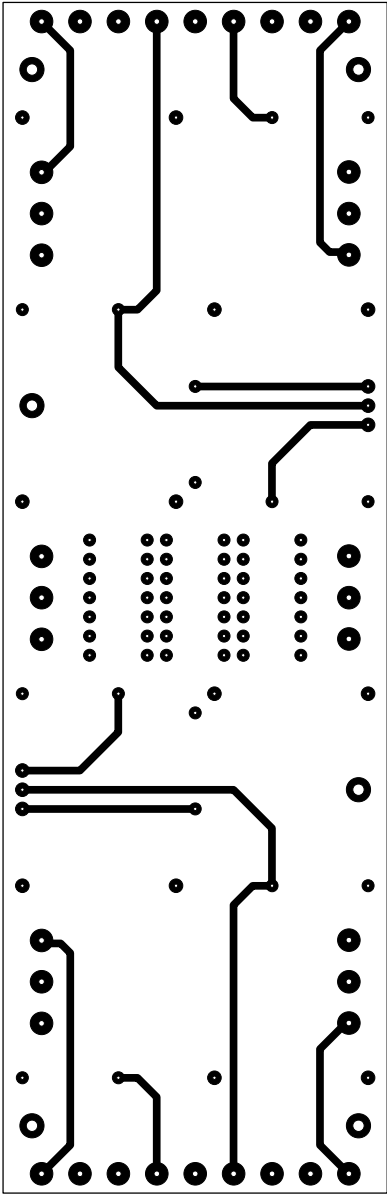
PassPower, Silkscreen (Feb. 3, 2003) (15:12) (PCB) SCALE: 29% ROTATED
Drill Ref Pnt: 0.179, 0.841 (inch)



ULTIboard
PCB Design



PassPower, Top (Feb. 3, 2003) (15:12) (PCB) SCALE: 29% ROTATED
Drill Ref Pnt: 0.179, 0.841 (inch)





ULTIboard
PCB Design



PassPower, Bottom (Feb. 3, 2003) (15:12) (PCB) SCALE: 29% ROTATED
Drill Ref Pnt: 0.179, 0.841 (inch)

