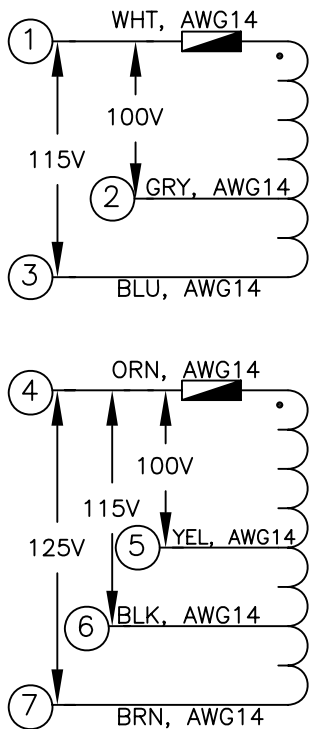
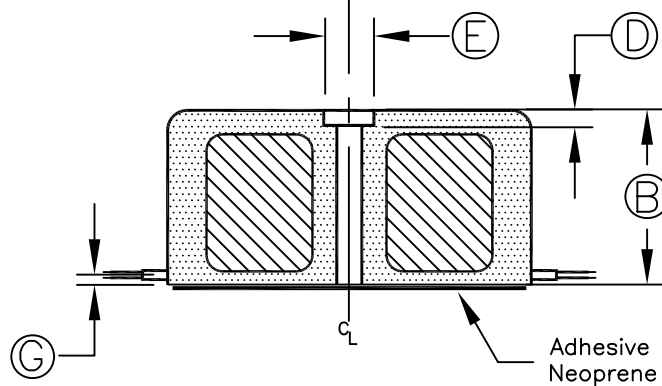
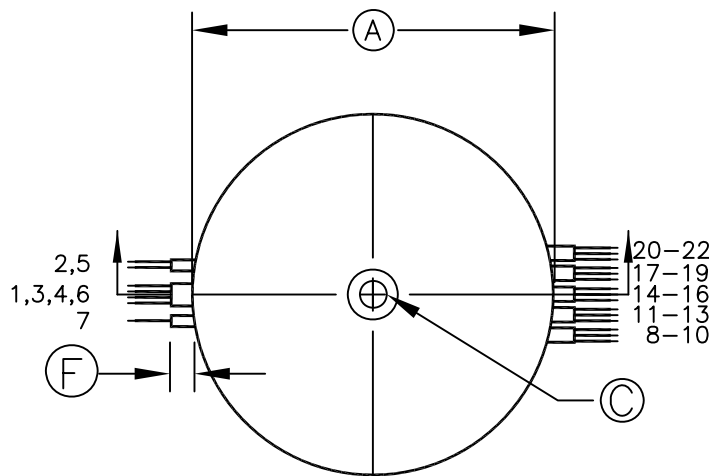


POWER:	VA	2428
TEMPERATURE RISE:	°C	*51
EFFICIENCY:	%	*96
WEIGHT:	kg	*20.1
FREQUENCY:	Hz	50-60





BLU, AWG16	⑧	58.50V, 4.15A 60.59V AT N/L
GRY, AWG16	⑨	C/T
BLU, AWG16	⑩	58.50V, 4.15A 60.59V AT N/L
RED, AWG16	⑪	58.50V, 4.15A 60.59V AT N/L
GRN, AWG16	⑫	C/T
RED, AWG16	⑬	58.50V, 4.15A 60.59V AT N/L
BLK, AWG16	⑭	58.50V, 4.15A 60.59V AT N/L
VIO, AWG16	⑮	C/T
BLK, AWG16	⑯	58.50V, 4.15A 60.59V AT N/L
BRN, AWG16	⑰	58.50V, 4.15A 60.59V AT N/L
WHT, AWG16	⑱	C/T
BRN, AWG16	⑲	58.50V, 4.15A 60.59V AT N/L
YEL, AWG16	⑳	58.50V, 4.15A 60.59V AT N/L
ORN, AWG16	㉑	C/T
YEL, AWG16	㉒	58.50V, 4.15A 60.59V AT N/L




REF	DIMENSIONS			
	Unit:	(nom)	(max)	TOLERANCE
A	inch	8.375		±0.031
B	inch	5.000		±0.031
C	inch	9/16		
D	inch	0.75		
E	inch	1.25		
F	inch	1.0		
G	inch	0.5		

LEADS	LENGTH ±10mm	TERMINATION
1-22	610	Strip 6mm +3/-0mm

LABEL	
PLITRON MANUFACTURING INC. 9016-V2-00 DATE CODE F:50/60 INPUT:(0-100-115 0-100-115-125 VAC) CLASS B-130°C	
 SERIES 3000 	

NOTES:

1. UL recognised under UL File No.E156800 to UL506, UL1411, CSA 22.2 No66-1988 Class B(130°C) Insulation System.
2. Materials and construction is verified by CSA File No.LR84566-11, TO IEC65(EN60065).
3. All stranded leads are TEW/UL1015 type wire.
4. Leads breakout with specific sequence.
5. Thermal resetting switches 130°C N.C., one in series with each primary.
6. Encapsulated in an Aluminium can.

* Calculated value	V=VAC rms A=I rms	C/T= Center Tap	N/L= No load
 PLITRON MANUFACTURING INC Toronto, Canada M3J 3J2 www.plitron.com		TOROIDAL POWER TRANSFORMER	
DESIGN BY:	E.TAM	DATE:	06/02/2005
DRAWN BY:	S.M.	DATE:	06/10/2004
CHECKED BY:		DATE:	
APPROVED BY:		DATE:	
		DWG NO.	9016-V2-00
		SCALE	N/A
		SHEET 1 OF 1	