

Fig. 1 (Original Amp Camp #1)

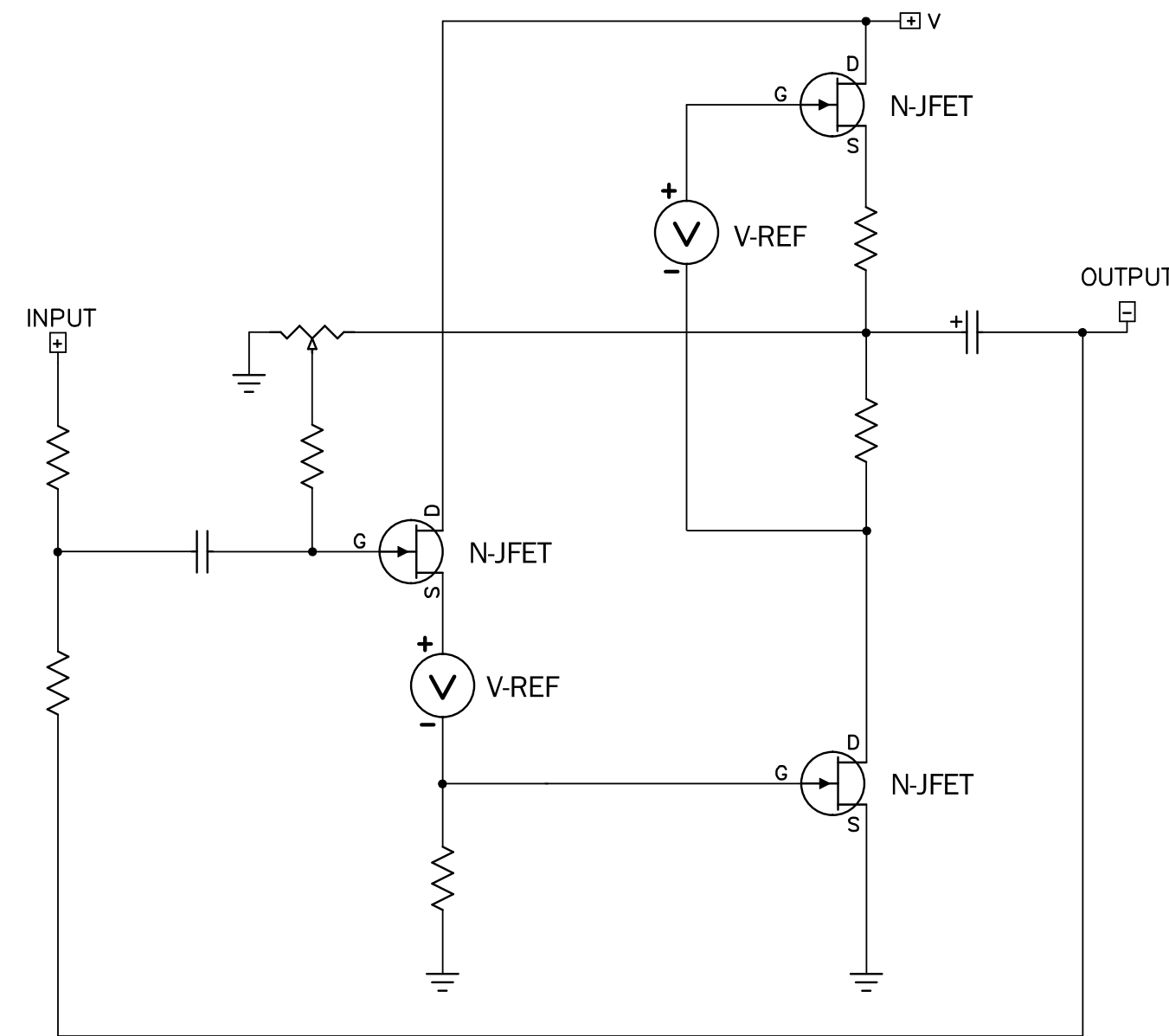


Fig. 2 (Amp Camp modified with power jfets)
Lower gate-source threshold voltage

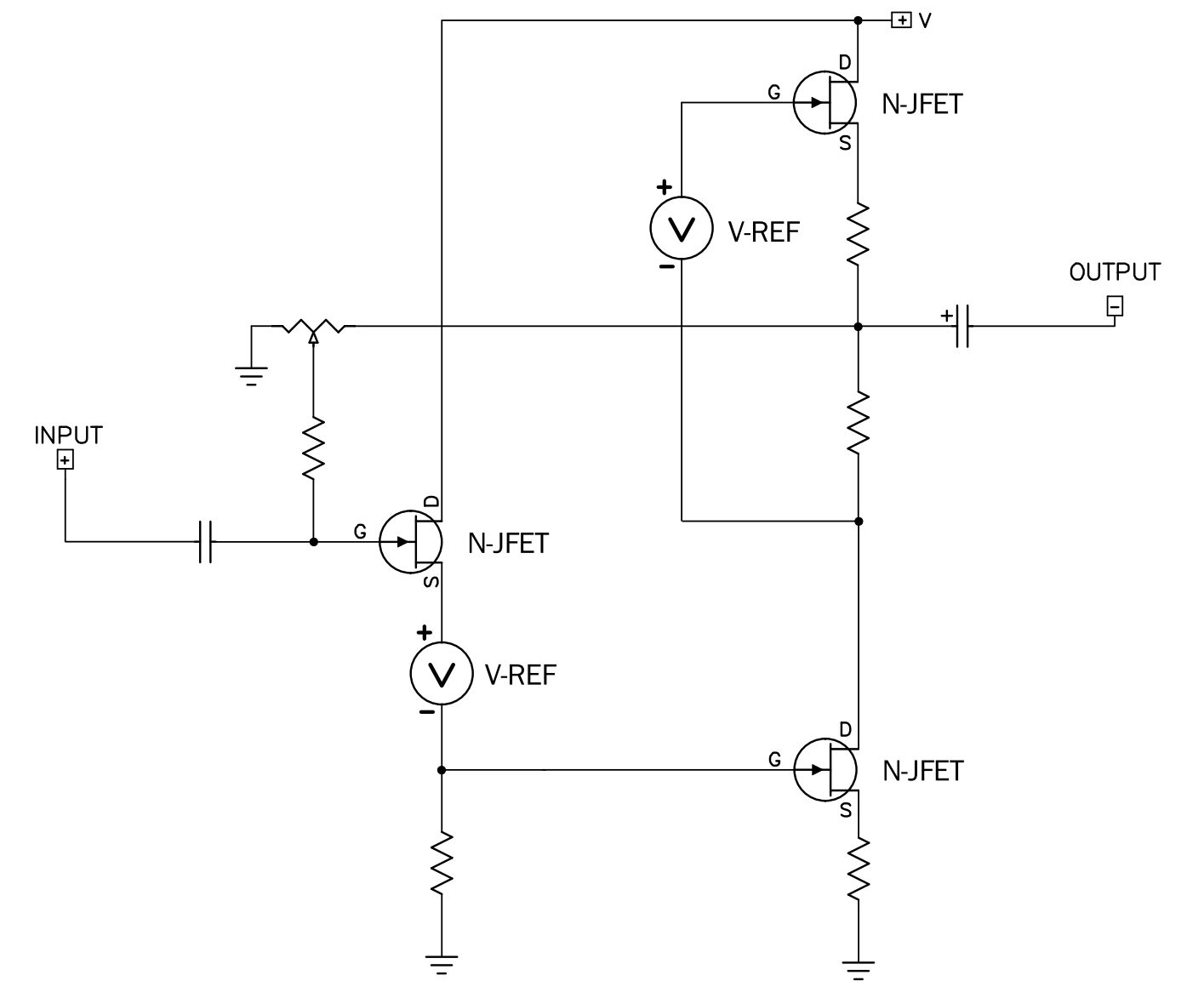


Fig. 3 (Amp Camp modified with power jfets)
No voltage feedback

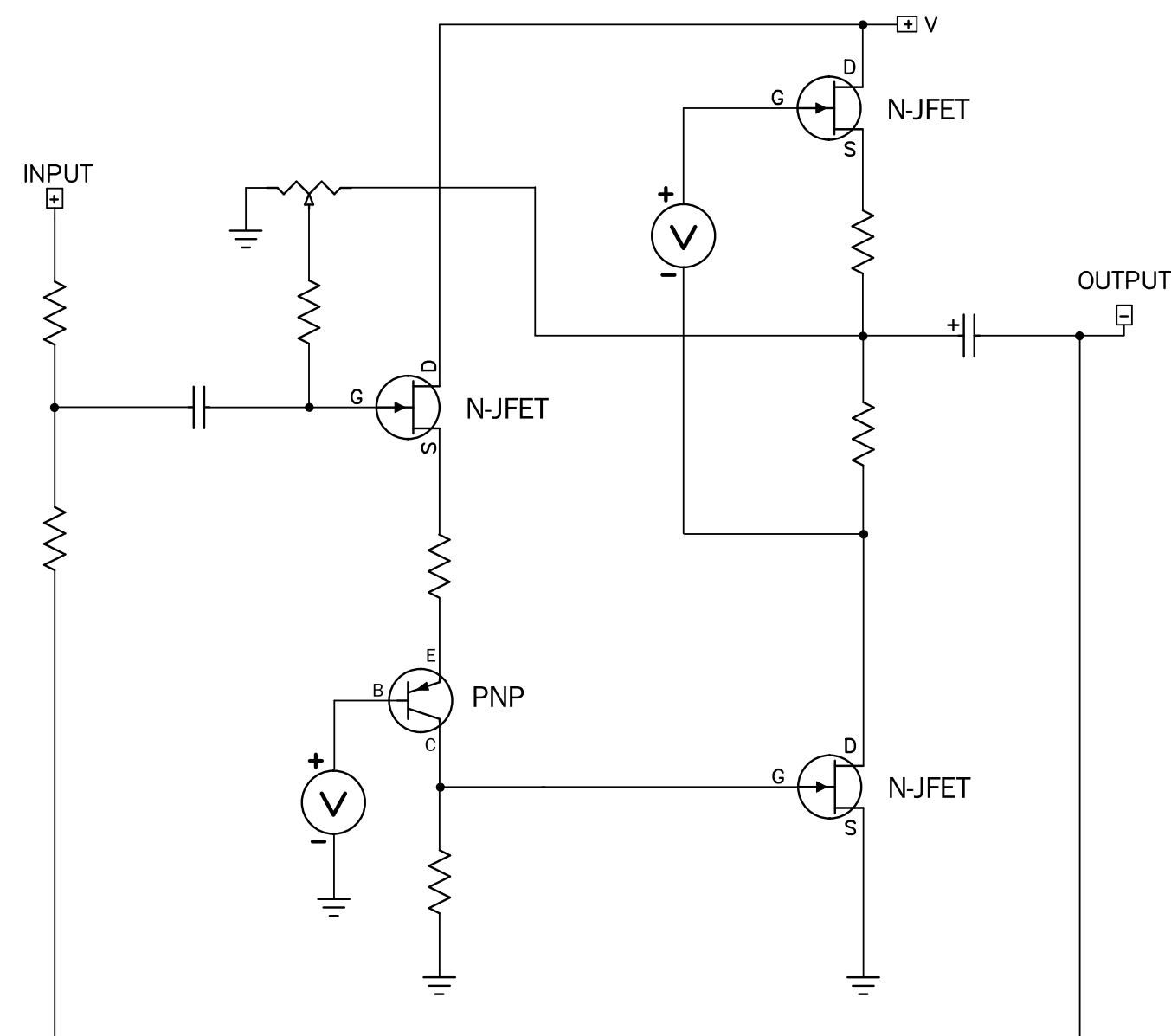


Fig. 4 (Amp Camp modified with power jfets)

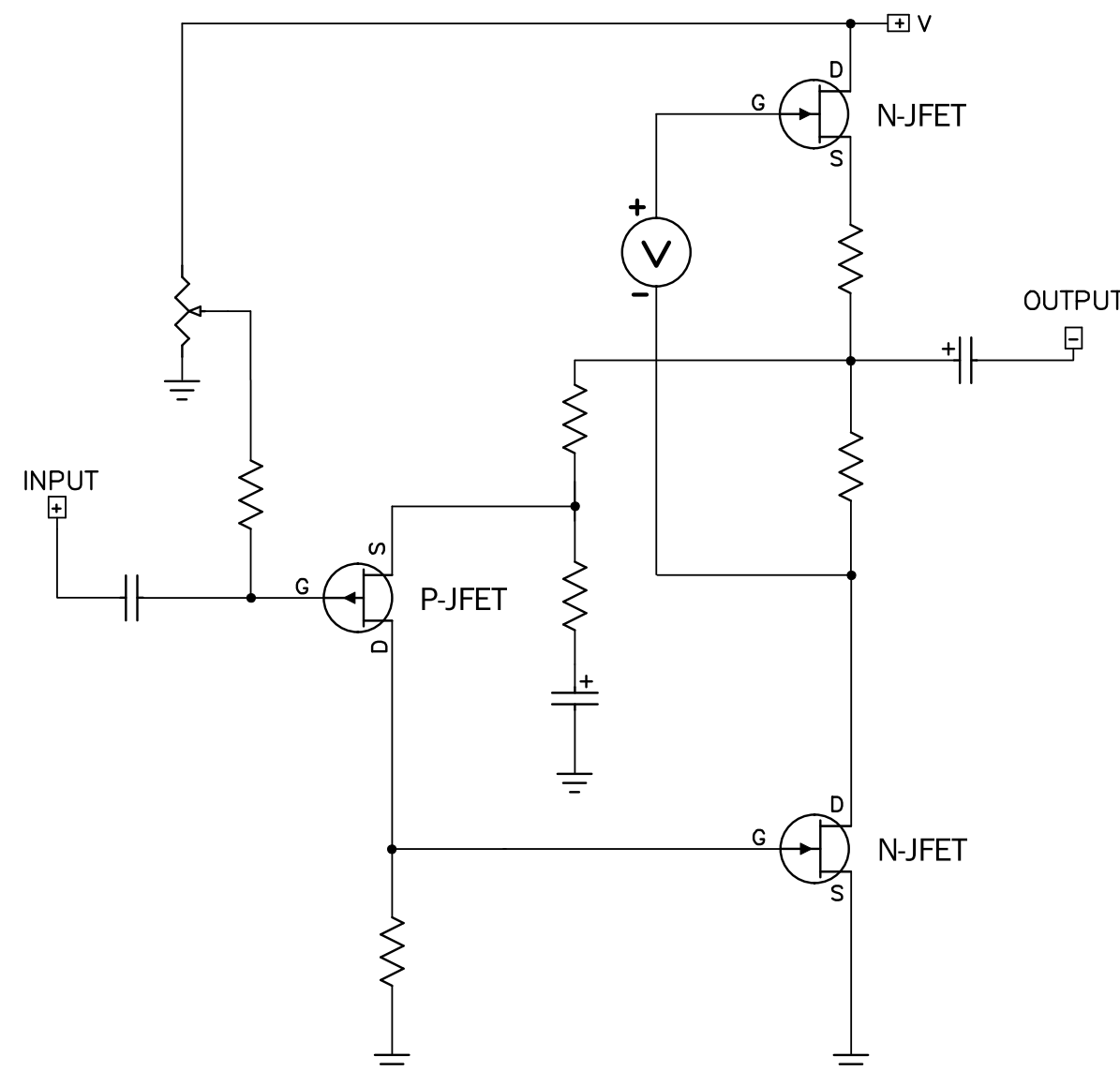


Fig. 5 (Amp Camp with source feedback)

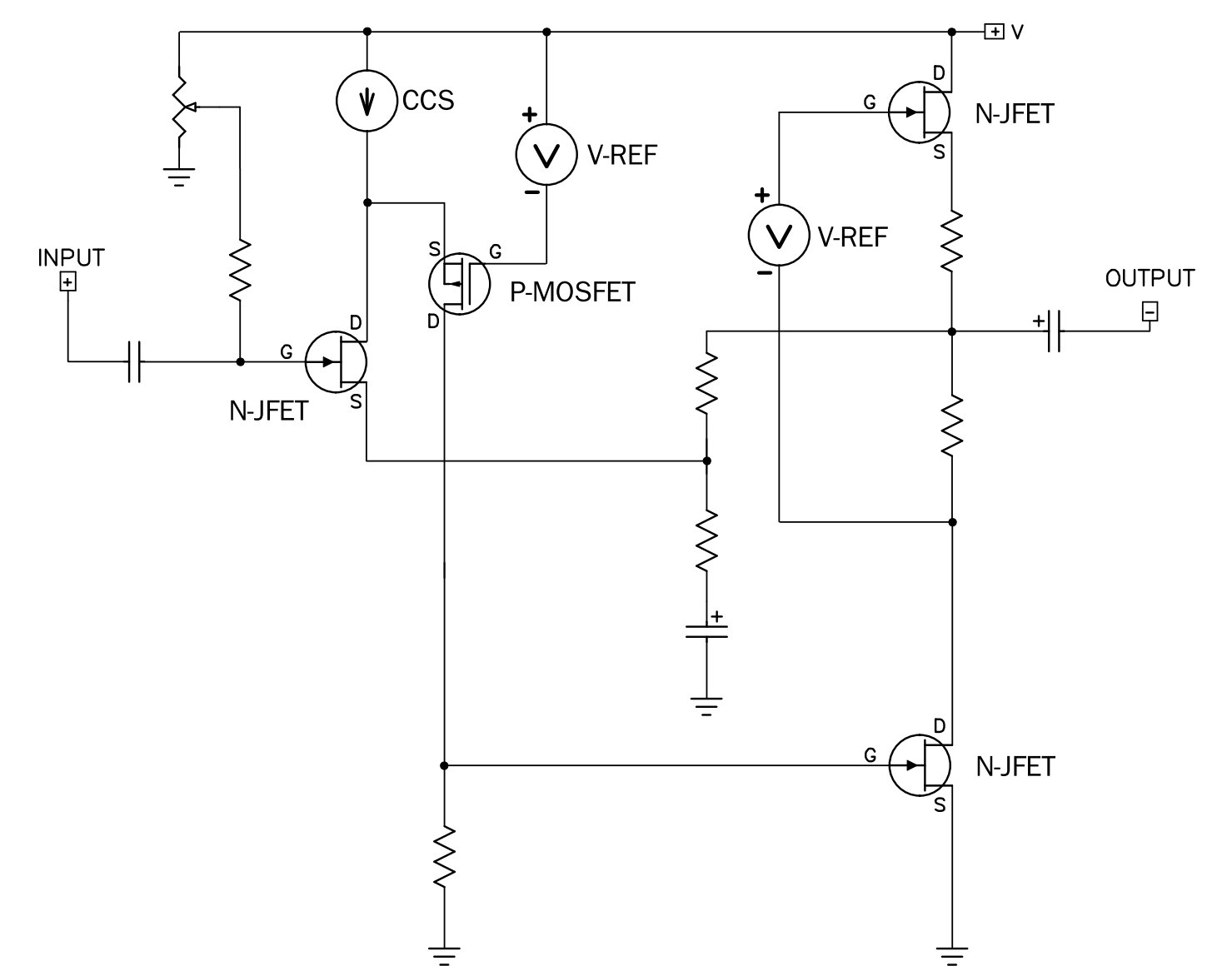


Fig. 6 (Amp Camp with folded cascode)