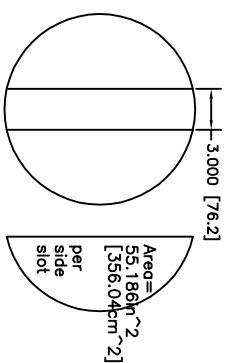



Sd=855cm<sup>2</sup>  
Compression 4:1  
S2=Sd/4 = 213.75cm<sup>2</sup> [33.131in<sup>2</sup>]  
H<sub>eq</sub>=5.213cm [2.052in]

IF SAME AS 15HP1060 THEN:

Maximum excursion ~24mm to horn path, e.g.: if cone compensation is applied all the way across the duct.



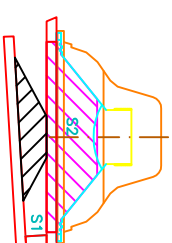
FatiguePro  
15MHP1060



0.944 [24.0]

$\sigma_{eq} = 59.9961 \sqrt{2} [387.07 \text{ cm}^2]$

Height eq. = 3.717 [9.44 cm]



Area =  $37.947\text{in}^2$  [244.82cm<sup>2</sup>]  
Heigh eq. = 2.351" [5.97cm]

Material: 23/32"(.719") [18.3mm]

