

SEPTEMBER 28, 1978

SERVICE TECHNICAL BULLETIN NO. 42

MODEL

THALIA (801)

SYMPTOMS

Excessive hum in phono when Thalia is placed on top of a power amplifier.

PROBLEM

Ground loop in phono circuitry.

REMEDY

Modify ground traces on phono section.

PARTS REQ'D

- (1) 1.125" Jumper with sleeving. Part #815004
- (1) 0.5" Jumper with sleeving. Part #815001

PROCEDURE

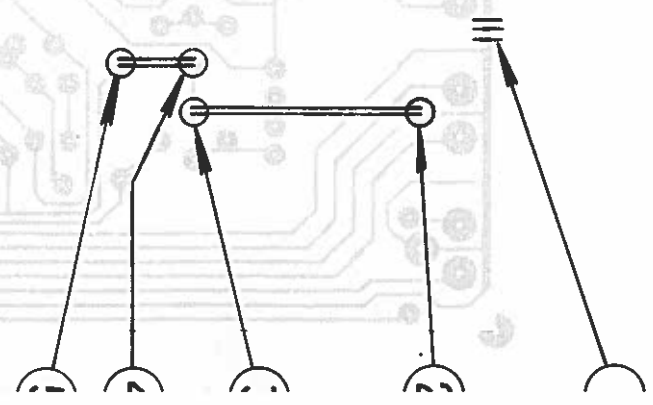
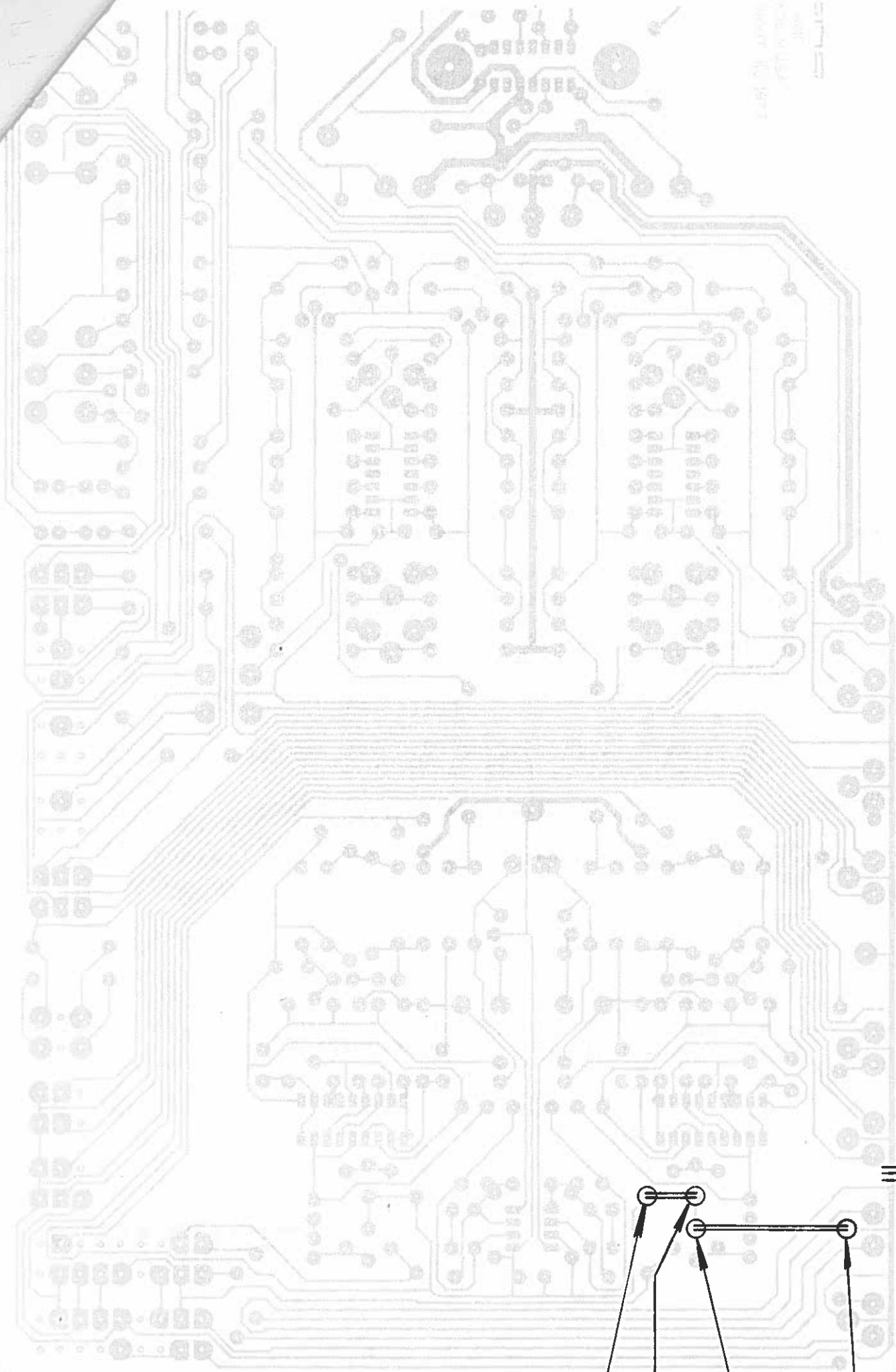
1. Remove bottom cover.
2. Refer to the pictorial for location of repair area.
3. Cut ground foil, between phono II and tuner at (Point No. #1).
4. Add jumper 1.125" between the ground of phono II at (Point No. #2), and the ground of C117 and C118 at (Point No. #3).
5. Add 0.5" jumper between (Point No. #4) and ground R103 at (Point No. #5).
6. Replace the bottom cover.
7. Turn on unit, check for proper operation.

NOTE

Units affected by this notice have serial numbers prior to s/n 803050



DATE: 01/10/00  
REV: 1.0  
PAGE: 1



CUT  
FOIL  
HERE

821C  
MADE IN USA  
COPYRIGHT © 1977

