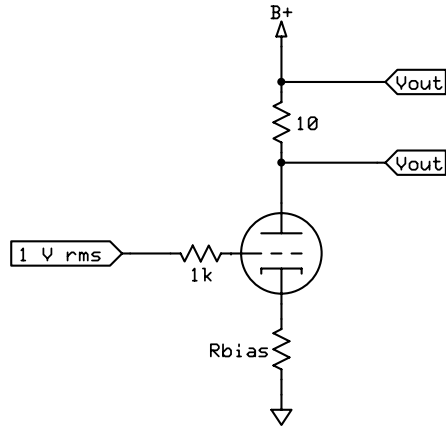
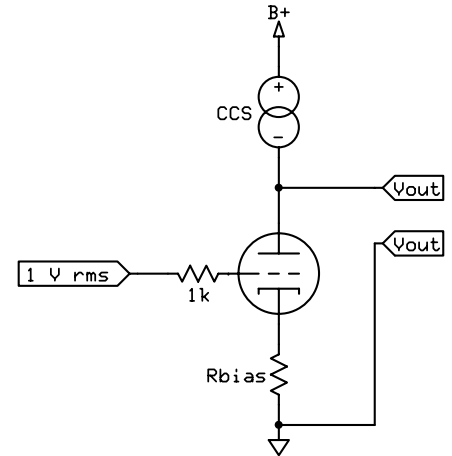


B+ and CCS set such that idle current is identical for each test



$$\begin{aligned}
 g_m \text{ (micromhos)} &= \mu\text{A} / V \\
 &= V_{out} * (1E6/10) / 1 \\
 &= V_{out} * 1E5
 \end{aligned}$$



$$\begin{aligned}
 \mu &= V_{out} / V_{in} \\
 &= V_{out}
 \end{aligned}$$

$$R_p = \mu / (g_m / 1E6)$$