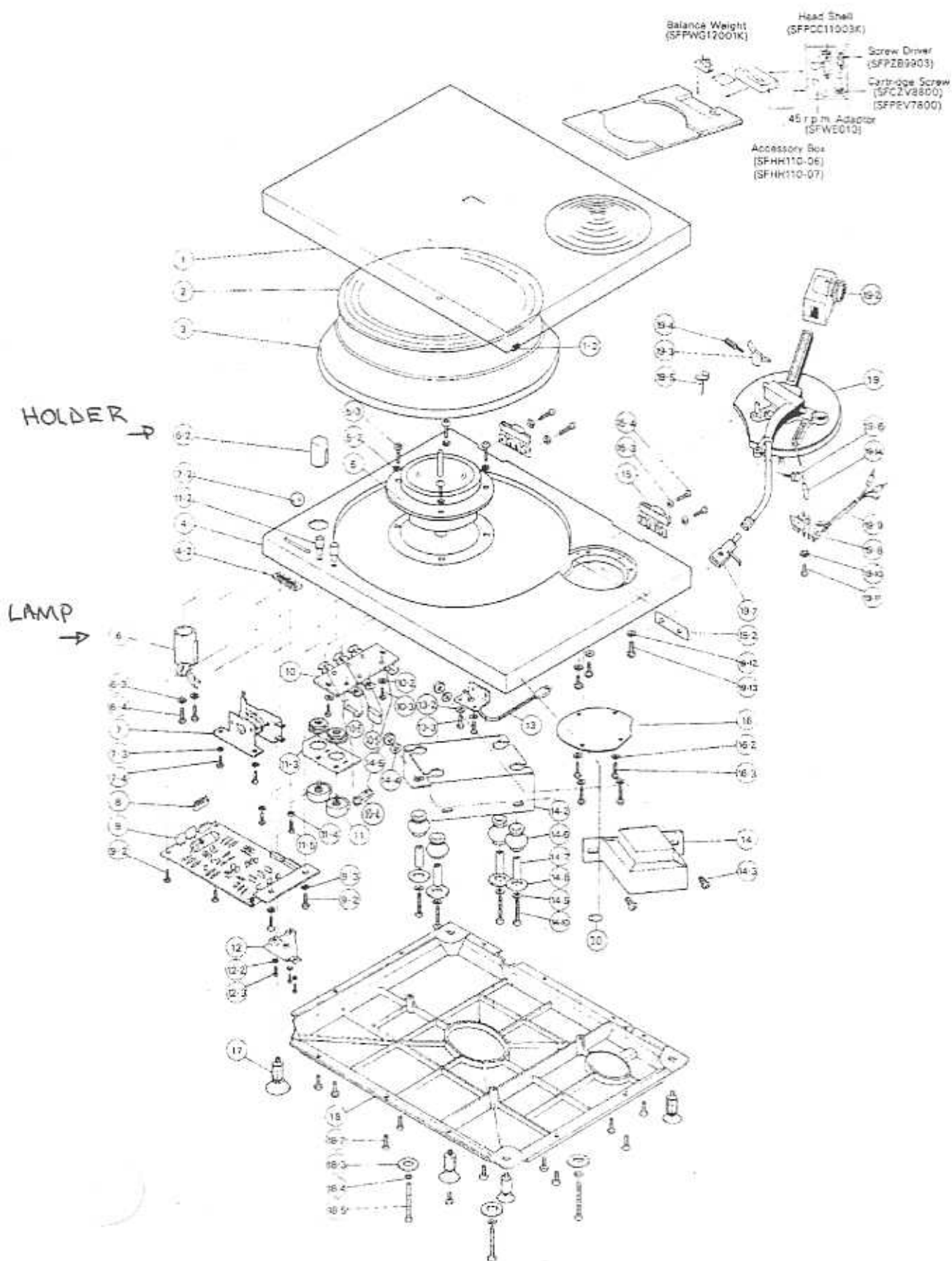


EXPLODED VIEW OF DIRECT DRIVE PLAYER

Model SL-1200



Ref. No.	Part No.	Description	Per Set Pcs.	Ref. No.	Part No.	Description
1	SFAD120E01A	Dust Cover Ass'y	1	18-2	XSB3 - 8FVS	Screw
1-2	SFGC04GL1	Cushion, Dust Cover	2	18-3	SFXW120-01	Washer
2	SFTG120-01	Turntable Mat	1	18-4	XWA3BF	Spring Washer
3	SFTE120-01A	Turntable Platter Ass'y	1	18-5	XSN3 - 50FVS	Screw
4	SFAC120M01A	Player Case	1	19	SFPZ120X01A	Tone Arm Base Ass'y
4-2	SFGZ120-01	Rubber	1	19-2	SFP-WG12001K	Balance Weight
5	MJL-9A-1	Motor Ass'y	1	19-3	SFP-RT12001	Arm Lift
				19-4	SFP-EV12005	Screw, Arm Lift
5-3	XYN4 + C15FUS	Screw for Motor	4	19-5	SFP-RT12002	Arm Rest
6	SFUM120-01A	Strobe Illuminator	1	19-6	SFP-EV12001	Screw, Arm Rest
6-2	SFKZ120-01	Strobe Illuminator Holder	1	19-7	SFP-CC11003K	Head Shell
6-3	XWA3BF	Spring Washer (for Strobe Illuminator)	2	19-8	SFER5B	PU Terminal Strip Ass'y
6-4	XSN3 - 6FUS	Screw for Strobe Illuminator	2	19-9	SFDH120-01	PU Cords
7	ESL-18201U	Main Switch Ass'y	1	19-10	XWA3BF	Spring Washer
7-2	SFKT120-02	Knob, Main Switch Ass'y	1	19-11	XSN3 + 5FUS	Screw
7-3	XWA3BF	Spring Washer for Main Switch Ass'y	2	19-12	XWA4BF	Spring Washer
7-4	XSN3 - 6FUS	Screw for Main Switch Ass'y	2	19-13	XSN4 - 8FUS	Screw
8	SFDJ12805S	Pin Connector	1	19-14	SFP-AB12002	Knob, Arm Lift
9	SFDP120M01A	Printed Wiring Base Ass'y	1	20	SFGZ120-02	Attached to Player Case
9-2	XSN3 - 6FUS	Screw for Printed Wiring Base Ass'y	4	ACCESSORY PARTS		
9-3	XWA3BF	Spring Washer for Printed Wiring Base Ass'y	2			
10	SFERC10-1E	Terminal Strip Ass'y	1		SFNU120E01	Printed Matter
10-2	XWA3BF	Spring Washer for Terminal Strip Ass'y	2		SQX7006	Warranty Card
10-3	XSN3 - 6FUS	Screw for Terminal Strip Ass'y	2		SFWK040L	Washing Cloth
10-4	XBAS260201	Fuse	1		SFWC010	Special Oil
10-5	ECQR6332HZ	Capacitor	1		SFWE010	45rpm Adaptor
10-6	ERG2PSK472	Resistor	1		SFP-ZB9903	Screw Driver
11	EVHB8A253B13	Variable Resistor	2		XSN4 - 12FUS	Clamp Screw, Trans.
11-2	SFKT120-01	Variable Pitch Control Knob	2		XSN3 - 6FUS	Clamp Screw, Rotor
11-3	SFUP120-02	Variable Resistor Mounting Plate	1		RQX9026A	Service Centers List
11-4	XWA3BF	Spring Washer	2	PACKING MATERIALS		
11-5	XSN3 - 6FUS	Screw	2			
12	SFUP120-03	Supporting Plate	1	P1	SFYF39838	Polyethylene Pack, Printed
12-2	XWA3BF	Spring Washer	3	P2	SFRPS0006	Polyethylene Pack, Weight Head Screws, Adaptor
12-3	XSN3 - 6FVS	Screw	3	P3	SFYF45A50	Polyethylene Pack, Turntable
13	SFUP120X06A-STF-1	AC Terminal Strip Ass'y	1	P4	SFYC100A130	Polyethylene Sheet, Player
13-2	XWA4BF	Spring Washer	2	P5	SFYR13C400Y	Ribbon
13-3	XSN4 - 6FUS	Screw	2	P6	SFHK120-01	Supporting Base for Tone
14	ETP57E14A	Power Transformer	1	P7	SFHH110-06	Accessory Box, Lid
14-2	SFUP120-04	Transformer Mounting Board	1	P8	SFHH110-07	Accessory Box, Bottom
14-3	XSN4 - 8FUS	Screw	2	P9	SFHD120-04	Top Pad
14-4	XWA4BF	Spring Washer	2	P10	SFHD120X01	Center Pad
14-5	XNG4H-FUS	Nut	2	P11	SFHD120X02	Turntable Pad
14-6	SFGC010-1	Cushion Rubber	4	P12	SFHZ120X01	Spacer, Dust Cover
14-7	SFX0850-1	Spacer	4	P13	SFHZ120-02	Protection Sheet, Dust Cover
14-8	SFXW750-1	Washer	4	P14	SFHD120-02	Pad, Dust Cover
14-9	XWA3BF	Spring Washer	4	P15	SFHH120-01	Side Pad
14-10	XSN3 - 25FUS	Screw	4	P16	SFHP120E01	Inside Packing Case
15	SFAT120-01E	Hinge Ass'y	2	P17	SFHP120E02	Outside Packing Case
15-2	SFUP120-01	Hinge Mounting Plate	2	P18	SFNU120-02	Instruction of Packing
15-3	XWA3BF	Spring Washer	4			
15-4	XSN3 - 10FVS	Screw	4			
16	SFUP120-05	PU Shield Board	1			
16-3	XSN3 - 25FUS	Screw	4			
17	SFUZ120-01A	Audio-Insulated Leg Ass'y	4			
18	SFAU120M01A	Bottom Cover Ass'y	1			