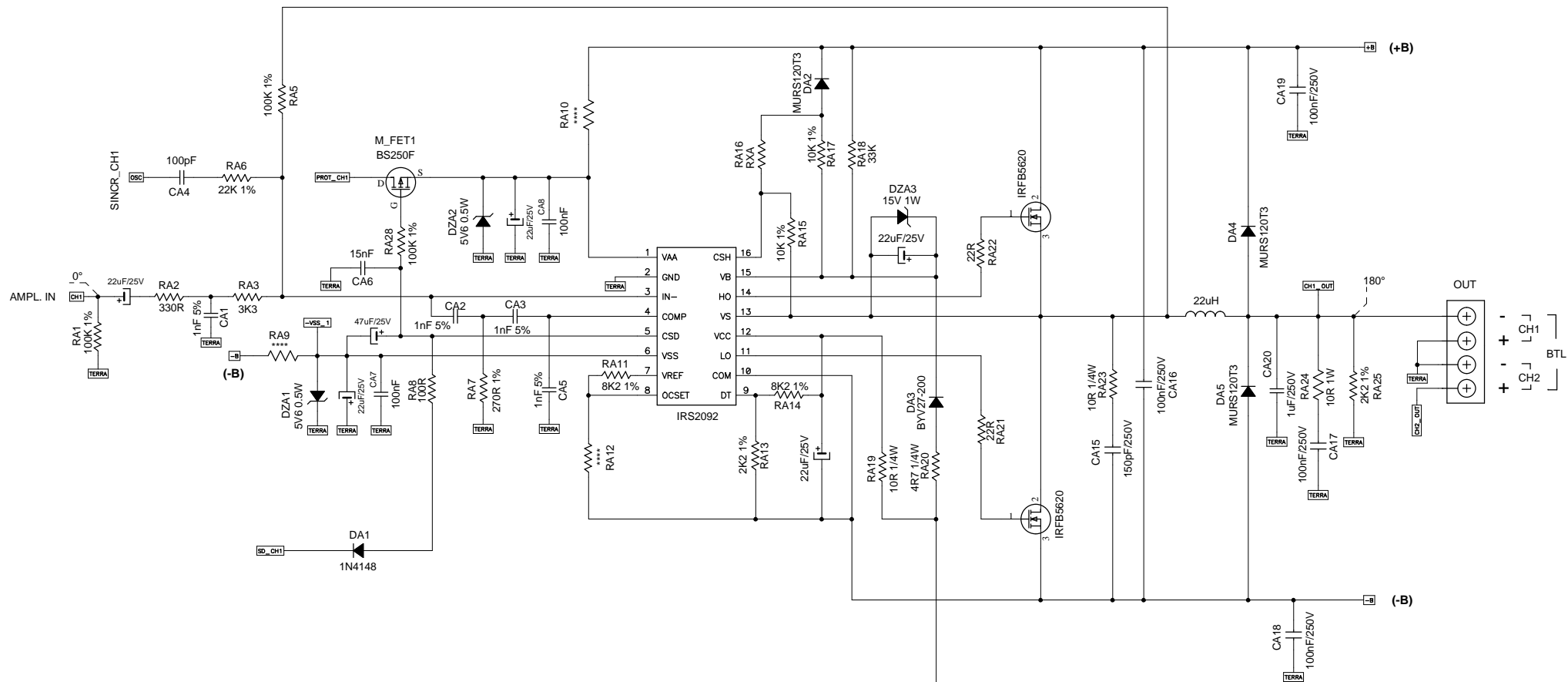
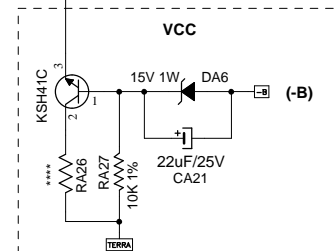


TARAMPS AMPLIFICADORES

PRODUTO	TS-800 X4_R1 (1 Ohm / 2 Ohms)		REV
FOLHA A3	BLOCO PRE (CH3/CH4)		
PROJETO	GIVALDO		DESENHO ADILSON
DATA	21/06/2011		
ARQUIVO			FOLHA 2 DE 8

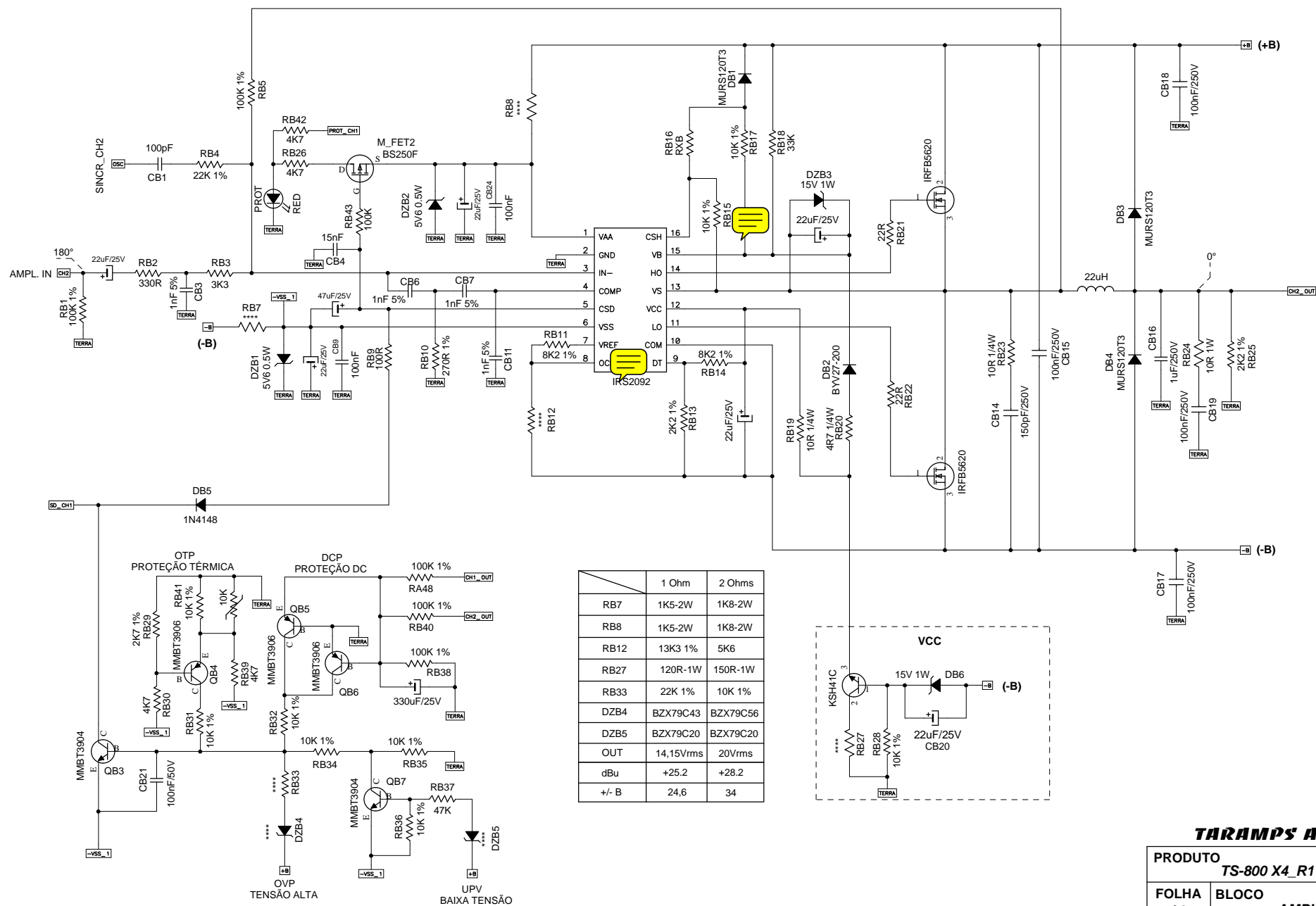


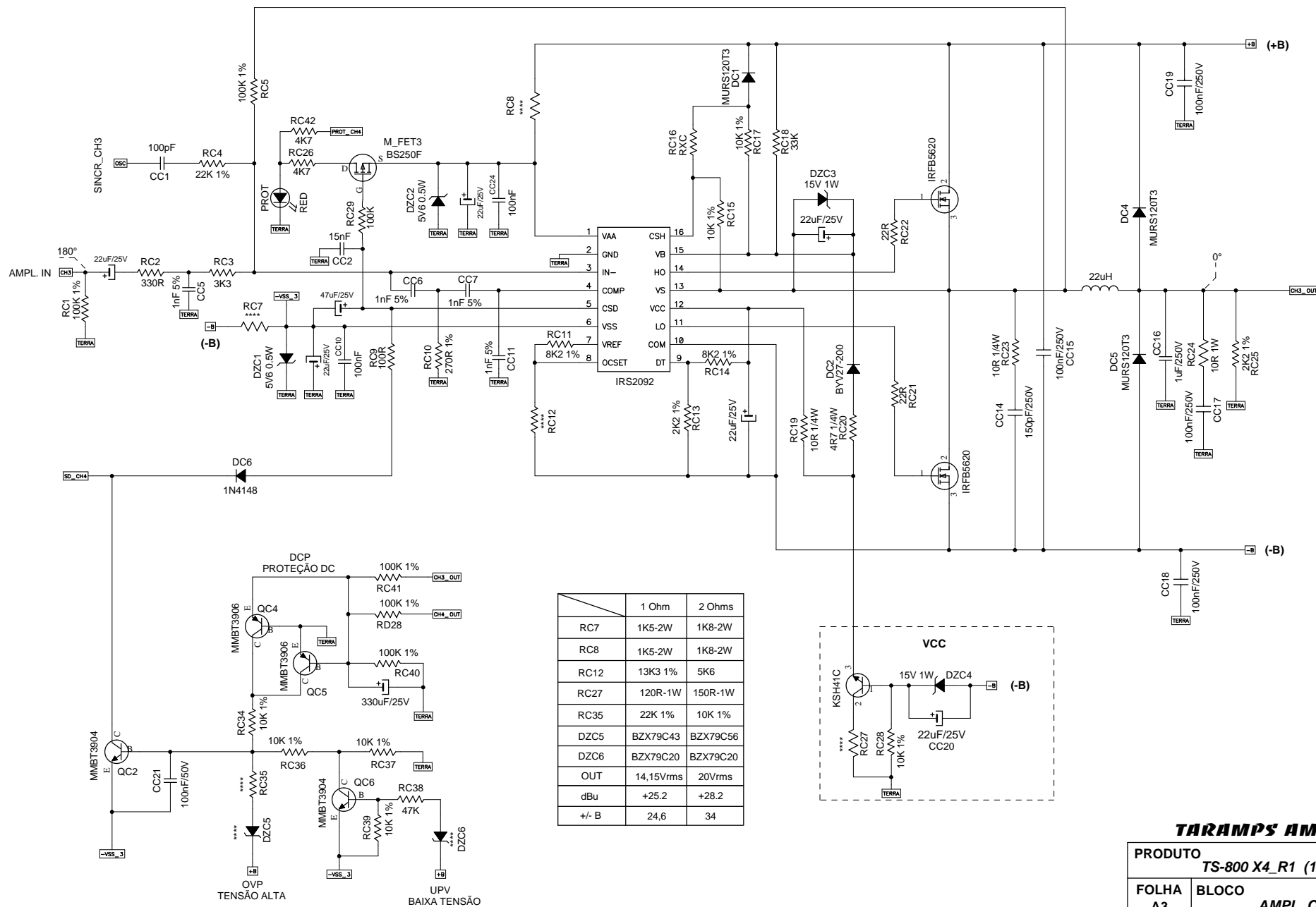
	1 Ohm	2 Ohms
RA9	1K5-2W	1K8-2W
RA10	1K5-2W	1K8-2W
RA12	13K3 1%	5K6
RA26	120R-1W	150R-1W
+/- B	24,6	34
OUT	14,15Vrms	20Vrms
dBu	+25,2	+28.2



TARAMPS AMPLIFICADORES

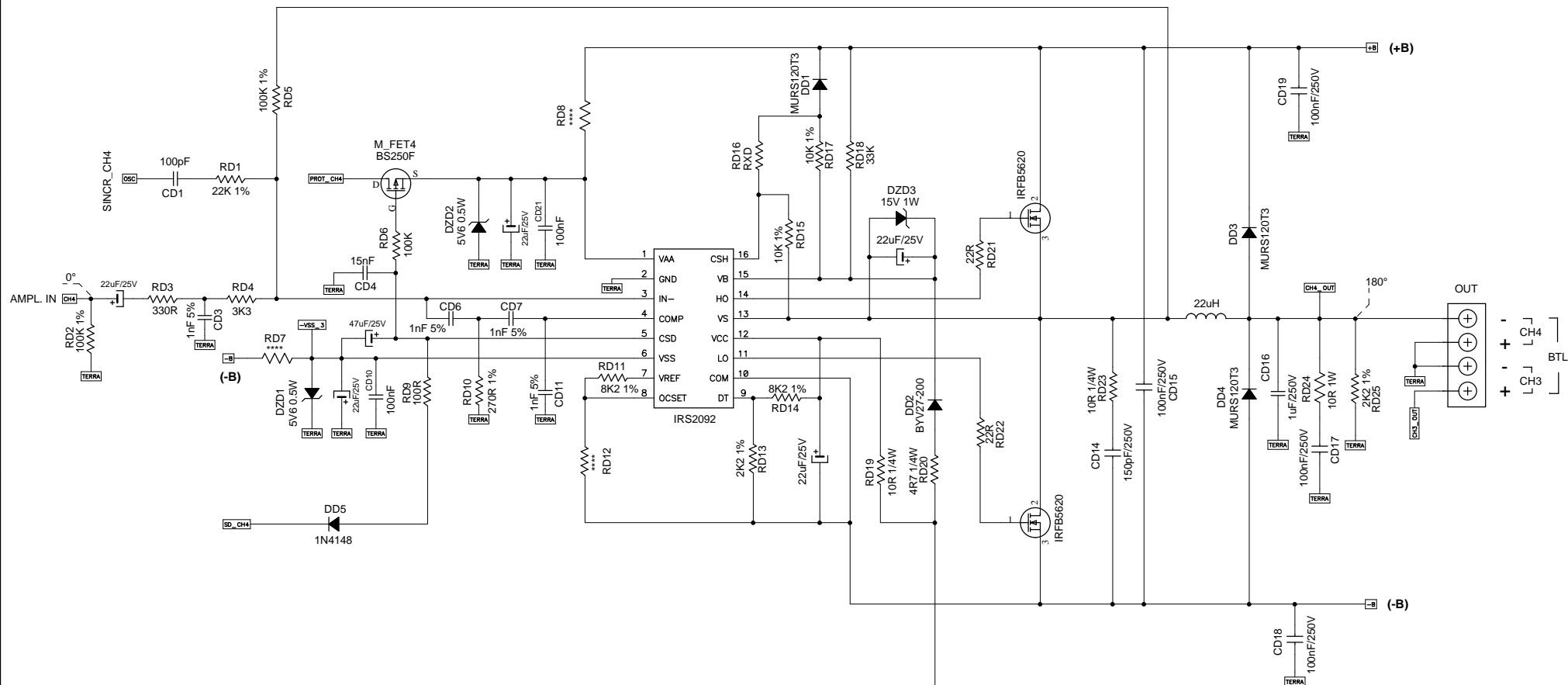
PRODUTO	TS-800 X4_R1 (1 Ohm / 2 Ohms)		REV
FOLHA A3	BLOCO AMPL. CH1		
PROJETO	GIVALDO		DESENHO ADILSON
DATA	21/06/2011		
ARQUIVO			FOLHA 3 DE 8



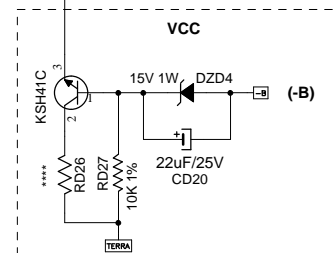


TARAMPS AMPLIFICADORES

PRODUTO	TS-800 X4_R1 (1 Ohm / 2 Ohms)		REV
FOLHA A3	BLOCO AMPL. CH3		
PROJETO	GIVALDO		DESENHO ADILSON
DATA	21/06/2011		
ARQUIVO			FOLHA 5 DE 8

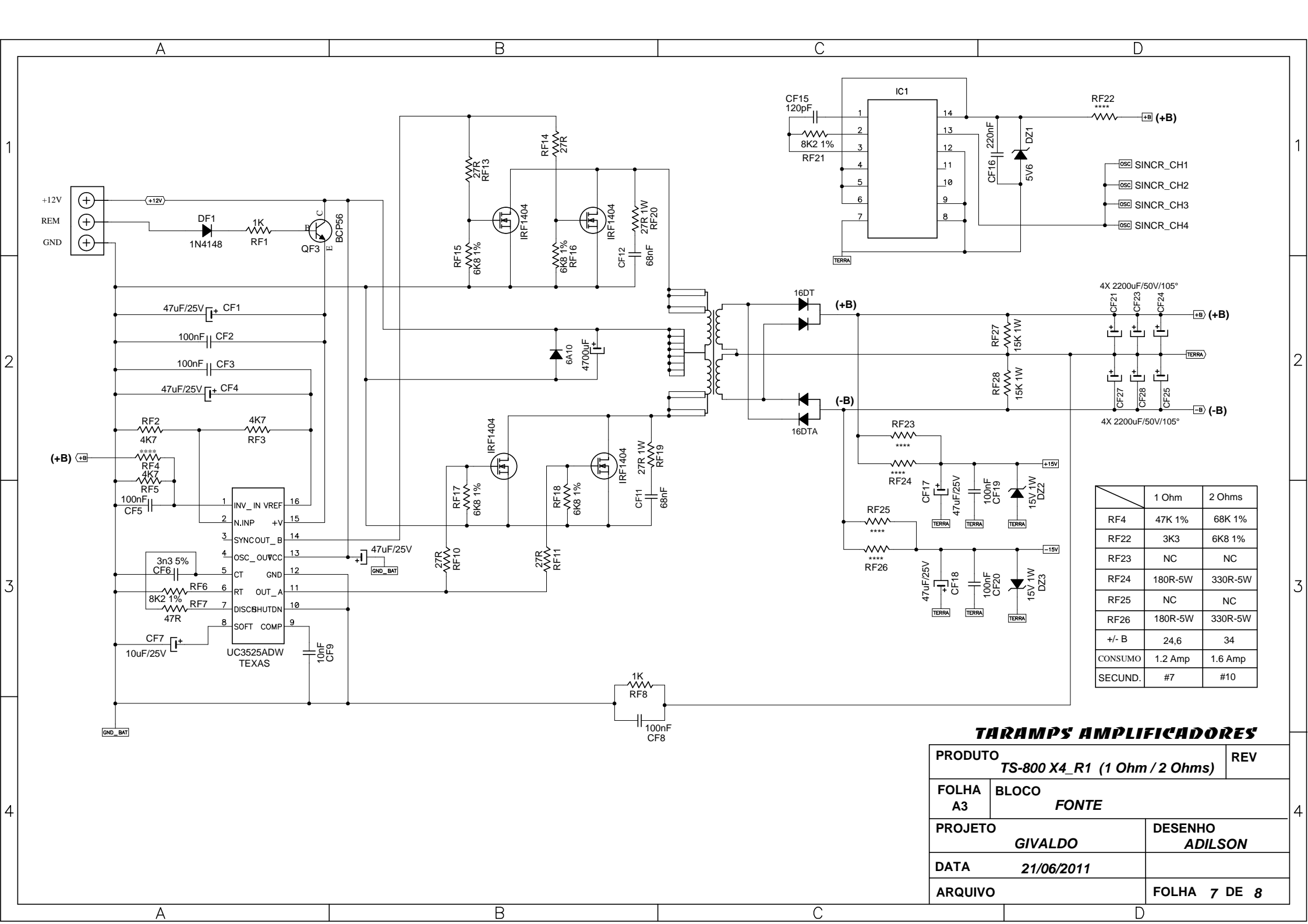


	1 Ohm	2 Ohms
RD7	1K5-2W	1K8-2W
RD8	1K5-2W	1K8-2W
RD12	13K3 1%	5K6
RD26	120R-1W	150R-1W
+/- B	24,6	34
OUT	14,15Vrms	20Vrms
dBu	+25,2	+28,2



TARAMPS AMPLIFICADORES

PRODUTO	TS-800 X4_R1 (1 Ohm / 2 Ohms)		REV
FOLHA A3	BLOCO AMPL. CH4		
PROJETO	GIVALDO		DESENHO ADILSON
DATA	21/06/2011		
ARQUIVO			FOLHA 6 DE 8



1		2		3		4	
A		B		C		D	