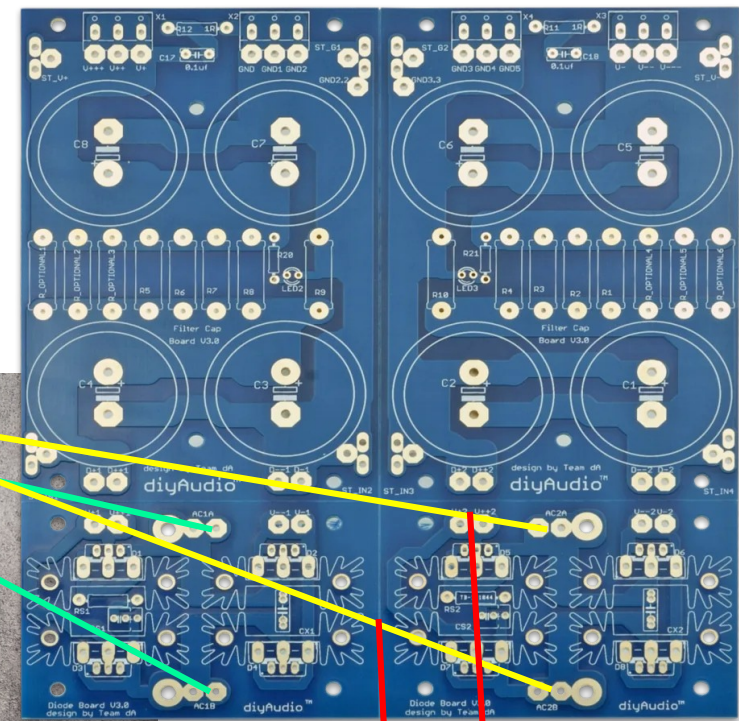
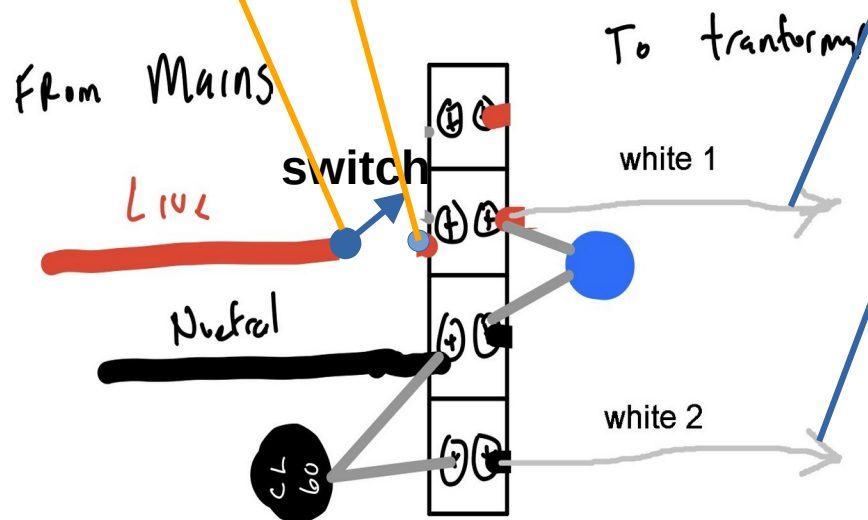
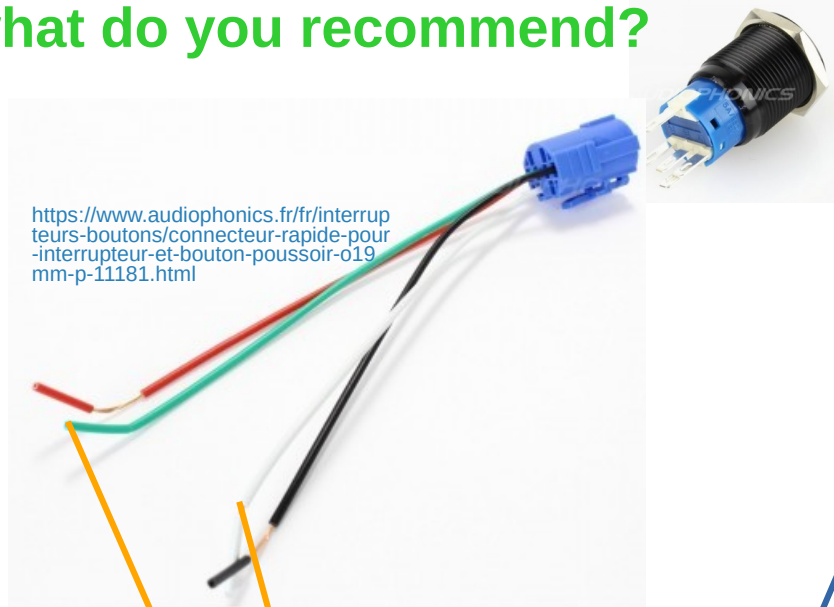


Switch : green and white wires are right ?
How should I connect red and black wires ?
what do you recommend?

<https://www.audiophonics.fr/fr/interrupteurs-bistable-2-positions/interrupteur-aluminium-anodise-avec-cercle-lumineux-bleu-1no1nc-250v-5a-o19mm-noir-p-9769.html>



Speaker Turn-On Delay / DC Protector

(diyaudiostore model)