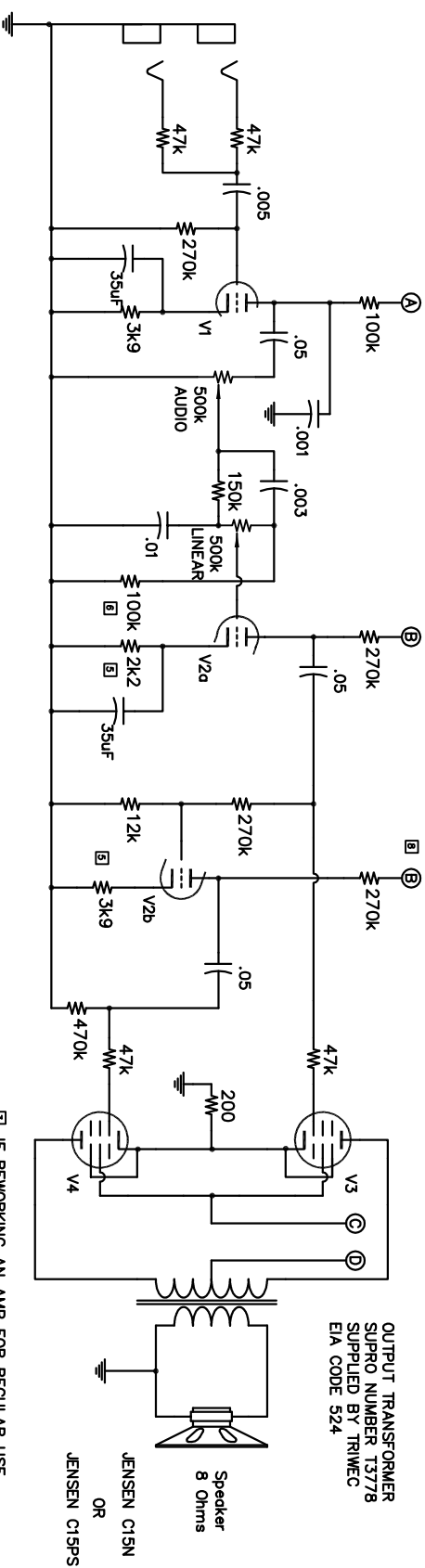


Rev.	Revision note	Date	By
1	ADDED VOLTAGE NOTES	04/05/06	SCW
2	ADDED FILTER CAP NOTE	04/05/06	SCW
3	ADDED CATHODE RES. NOTE	04/05/06	SCW
4	REVISED VOLTAGE ESTIMATES	04/06/06	SCW
5	CORRECTED CATHODE RESISTOR VALUES	04/24/06	SCW
6	CORRECTED RESISTOR VALUE	04/24/06	SCW
7	ADDED NOTE ABOUT SOCKET WIRING	09/13/06	SCW
8	CORRECTED PHASE INVERTER WIRING	11/27/07	SCW



IF USING 5881, 6L6GB OR 6L6GC TUBES THE CONNECTION FROM G3 TO CATHODE IS NOT NEEDED. EXTERNAL CONNECTION ONLY NEEDED IF YOU WANT TO USE EL34

OUTPUT TRANSFORMER SUPRO NUMBER 13778 SUPPLIED BY TRIWEC EIA CODE 524

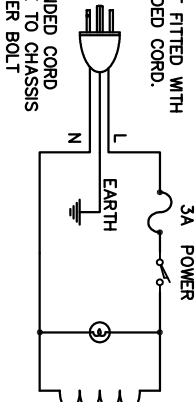
Speaker 8 Ohms

JENSEN C15N OR JENSEN C15PS

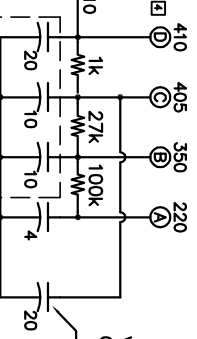
IF REWORKING AN AMP FOR REGULAR USE, THE CATHODE RESISTOR SHOULD BE ADJUSTED TO 220 OR 250 OHM FOR PROPER BIAS OF OUTPUT TUBES.

VOLTAGE MEASUREMENTS BASED ON ESTIMATES NOT MEASURED DATA \*\* SEVERAL PEOPLE HAVE REPORTED GREATLY DIFFERENT VALUES, ESPECIALLY IN THE PREAMP

ORIGINAL MODELS NOT FITTED WITH THREE PRONG GROUNDED CORD. WHEN FITTING A GOUNDED CORD SECURE GROUND WIRE TO CHASSIS BY USING TRANSFORMER BOLT



DASHED LINE INDICATES MULTISECTION FP TYPE CAN CAPACITOR



VOLTAGE MEASUREMENTS TAKEN WITH 125VAC LINE POWER ORIGINAL AMPS DESIGNED FOR 115VAC LINE POWER

THIS CAPACITOR INSIDE AMPLIFIER CHASSIS 300uF IN SOME MODELS

THE 1964 AND 1965 MODELS WERE COVERED IN A BLUE MATERIAL AND FEATURED A TUBE RECTIFIER THE 1966 MODEL WAS COVERED IN BLACK AND HAD A SOLID STATE RECTIFIER FITTED AFTER MID YEAR. THE S6420 THUNDERBOLT WAS DISCONTINUED SOMETIME IN 1967. THE S6920 MODEL IS GREATLY DIFFERENT.

# VOLTAGE CHART

VALUES BY J. MITCHELL

	1	2	3	4	5	6	7	8	9
12AX7	197	0	2.2	3.3AC	3.3AC	-	-	-	3.3AC
12AX7	167	0	2.0	3.3AC	3.3AC	138	0	1.4	3.3AC
6L6GC	-	0	3.3AC	390	0.4	-	3.3AC	30	-
6L6GC	-	0	3.3AC	390	0.4	-	3.3AC	30	-

