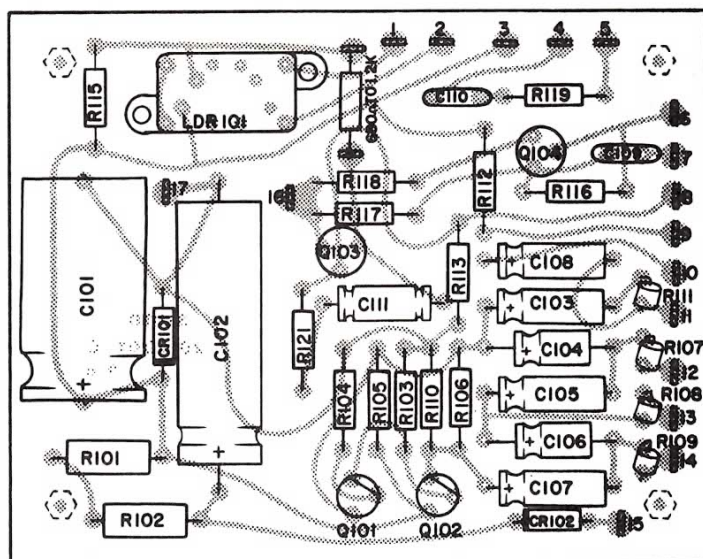


190L 350L
VIBRATO
32-0044



PIN NO.

- | | | |
|----------------------|------------------------|---------------------|
| 1. Volume pot | 7. Reverb footswitch | 13. Rate pot |
| 2. Volume pot | 8. Depth pot center | 14. Rate pot |
| 3. Reverb pot | 9. Depth pot | 15. Transformer red |
| 4. Pin 8 6AN8 | 10. Depth pot | 16. Ground |
| 5. Reverb pot Center | 11. Tremolo footswitch | 17. Ground |
| 6. Reverb pot center | 12. Rate pot | |

CIRCUIT NO.

DESCRIPTION

SUNN PART NO.

R101,102	1K 1 watt 10% carbon comp resistor	13-2102
R103	10K ½ watt 5% carbon film resistor	12-3102
R104,118	15 ohm ½ watt 5% carbon film resistor	12-0152
R105	4.7K ½ watt 5% carbon film resistor	12-2472
R106	680K ½ watt 5% carbon film resistor	12-4682
R107	2.7K ½ watt 5% carbon film resistor	12-2272
R108,109	1.8K ½ watt 5% carbon film resistor	12-2182
R110,117,119	220K ½ watt 5% carbon film resistor	12-4222
R111	3.3K ½ watt 5% carbon film resistor	12-2332
R112,113	22K ½ watt 5% carbon film resistor	12-3222
R114	680 ohm to 1.2K ½ watt 5% carbon film resistor	12-1682
R115	1.5K ½ watt 5% carbon film resistor	12-2152
R116	2.2Meg ½ watt 5% carbon film resistor	12-5222
R221	18K ½ watt 5% carbon film resistor	12-3182
C101	1000uf 50 Volt Elect capacitor	10-2580
C102	50uf 150 Volt Elect capacitor	11-4550
C103,108	10uf 25 Volt Elect capacitor	10-1010
C104,106	2.2uf 50 Volt Elect capacitor	10-1003
C105,107	1uf 40 Volt Elect capacitor	10-2520
C109	.022uf 100 Volt Mylar capacitor	10-3506
C110	.0015uf 1000 Volt Disc capacitor	10-9550
C111	2.2uf 50 Volt NP Elect capacitor	10-1002