

HPS 10HO

HPS 10SE

Service Guide - HPS10SE

HPS 12HO

Boston Horizon Subwoofers

Specifications

	HPS 10HO	HPS 10SE	HPS 12HO
Frequency Range:	35Hz – 150Hz	35Hz – 150Hz	25Hz – 150Hz
Amplifier Power:	250 watts RMS	150 watts RMS	300 watts RMS
Bass Driver:	10" (254mm) DCD	10" (254mm) DCD	12" (305mm) DCD
Dimensions: (H x W x D)	16 ⁵ / ₈ x 16 ⁵ / ₈ x 12 ⁷ / ₈ " (420 x 420 x 326mm)	17 ⁵ / ₈ x 17 ⁵ / ₈ x 13 ⁵ / ₈ " (445 x 445 x 345mm)	17 ⁵ / ₈ x 17 ⁵ / ₈ x 13 ⁵ / ₈ " (445 x 445 x 345mm)
Weight:	34 ⁵ / ₈ lbs (15.7kg)	38 ¹ / ₄ lbs (17.4kg)	45 ¹³ / ₁₆ lbs (20.8kg)



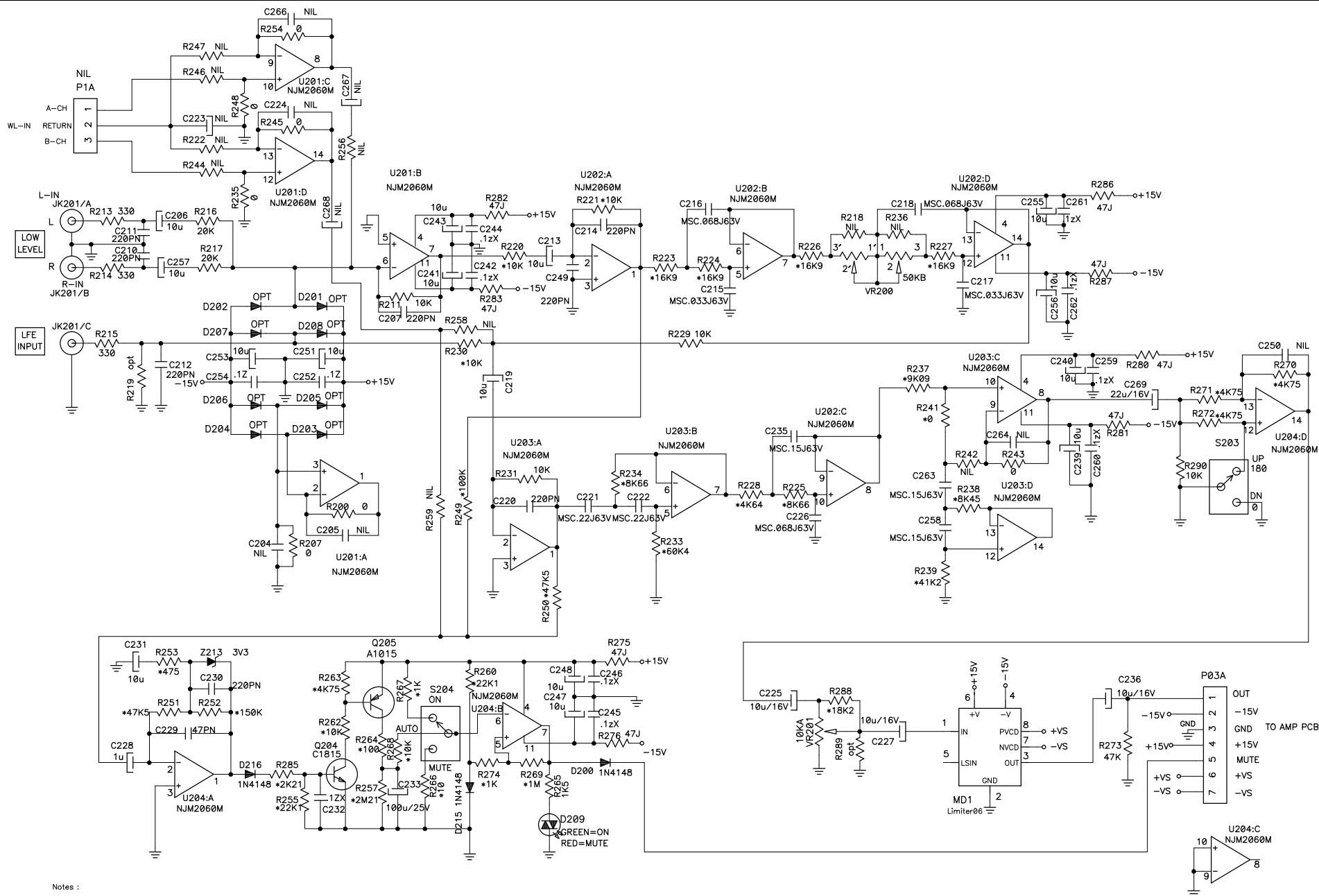
300 Jubilee Drive, Peabody, MA 01960
PH. 978 538 5000 FX. 978 538 6240

HPS Subwoofer Series
April 2008

8-DEC-2009
see updated part
number below:

Service Parts for HPS10SE:	Part Number
HPS10SE Woofer - 10"	110-002213
HPS10SE Amplifier - 120V MDNT	120-002954
HPS10SE Amplifier - 120V Mist	120-002970
HPS10SE Amplifier - 230V MDNT	120-002952
HPS10SE Amplifier - 230V Mist	120-002971
HPS10SE Transformer 120V	126-000113
HPS10SE Transformer 230V	126-000114
HPS10SE Power Cord - 120V	137-001360
HPS10SE Power Cord - 230V	137-001377
HPS10SE Foot MDNT	137-001390
HPS10SE Foot Mist	137-001391
HPS Rubber Grille Insert MDNT	114-000487
HPS Rubber Grille Insert Mist	114-000488
HPS10SE Owner's Manual	142-003051
HPS Insert P.O.P	142-003039
HPS Product Reg Card	142-001601
HPS10SE RSC MDNT	141-002389
HPS10SE RSC Mist	141-002387
HPS10SE EPS Top	141-002370
HPS10SE EPS Bottom	141-002393
FUSES ADDED 2-NOV-2009:	
For 120V: Fuse 2.0A 250V 20mm VDE	132-000157
For 230V: Fuse 1.0A 250V 20mm Time Lag	132-000158

use 126-000100



Notes :

"X" in the Value of Cap. is "X7R"

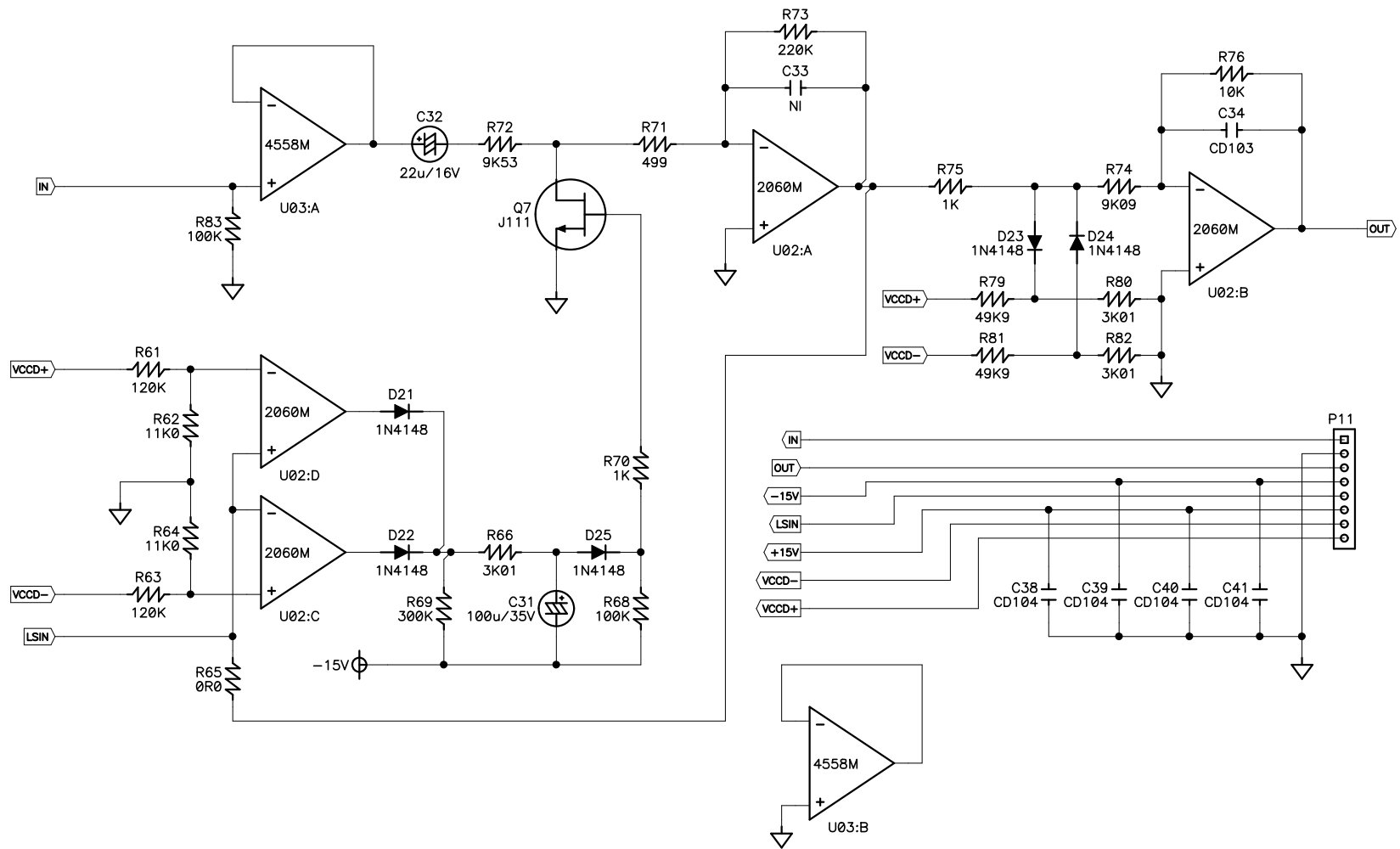
"N" in the Value of Cap. is "NPO"

"J" in the Value of Cap. or Resistor is Tolerances: 5%

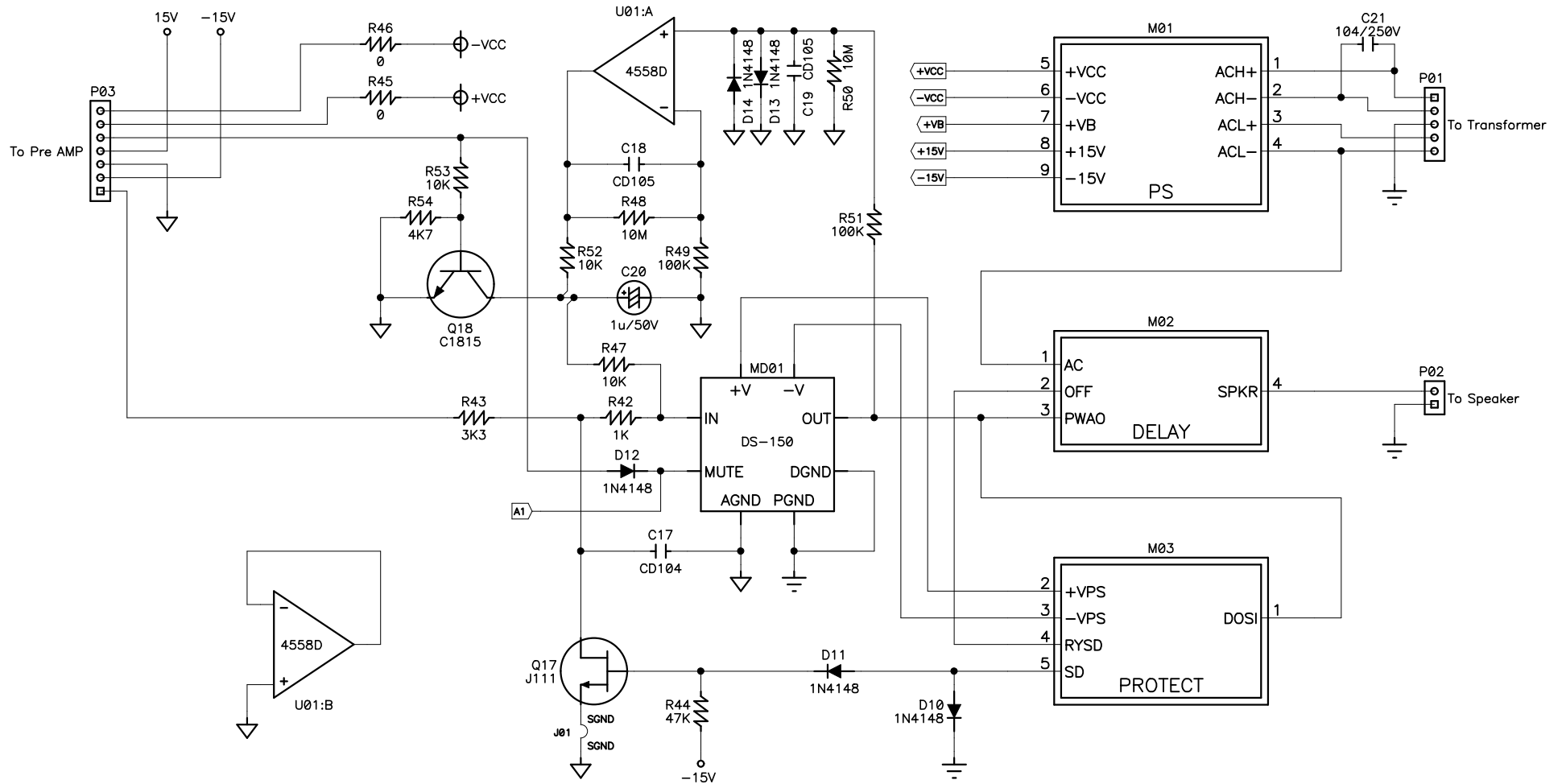
"*" in the Value of Res. is Tolerances: 1%

"MSC" is Metallized Polyester Film capacitor Tolerances: 5%(J)

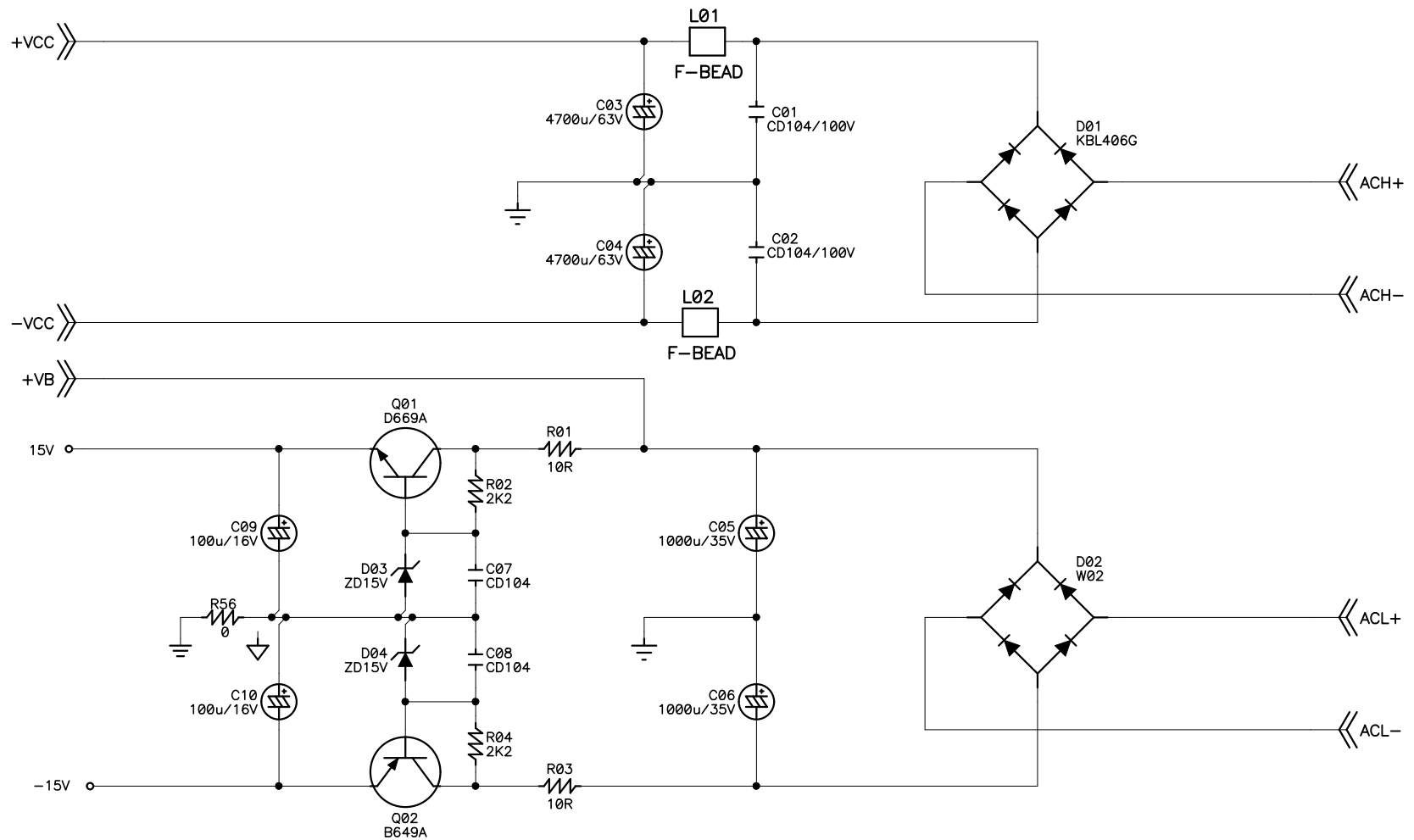
Drawn	EAGLE	Dsgn	Eagle	Appvd	Filename	PS10SE-preamp7.sch	Rev	E	Size	A3
					Model No.	HPS10SE	1			
					Drawn by	Eagle	2			
					Date	AUG 22 '2007	3			



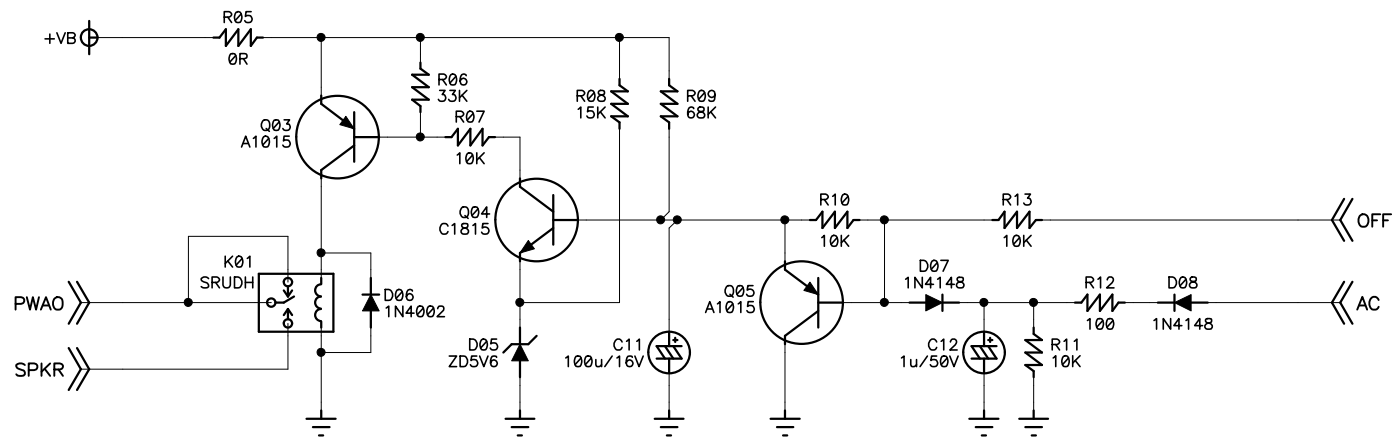
Title		
Limiter(J111)+Clip		
Size	Number	Rev
A4	BN2007012	K
Date	8/06/2007	Drawn by Mike
Filename	PS10SE-Limiter7.sch	Sheet 1 of 1



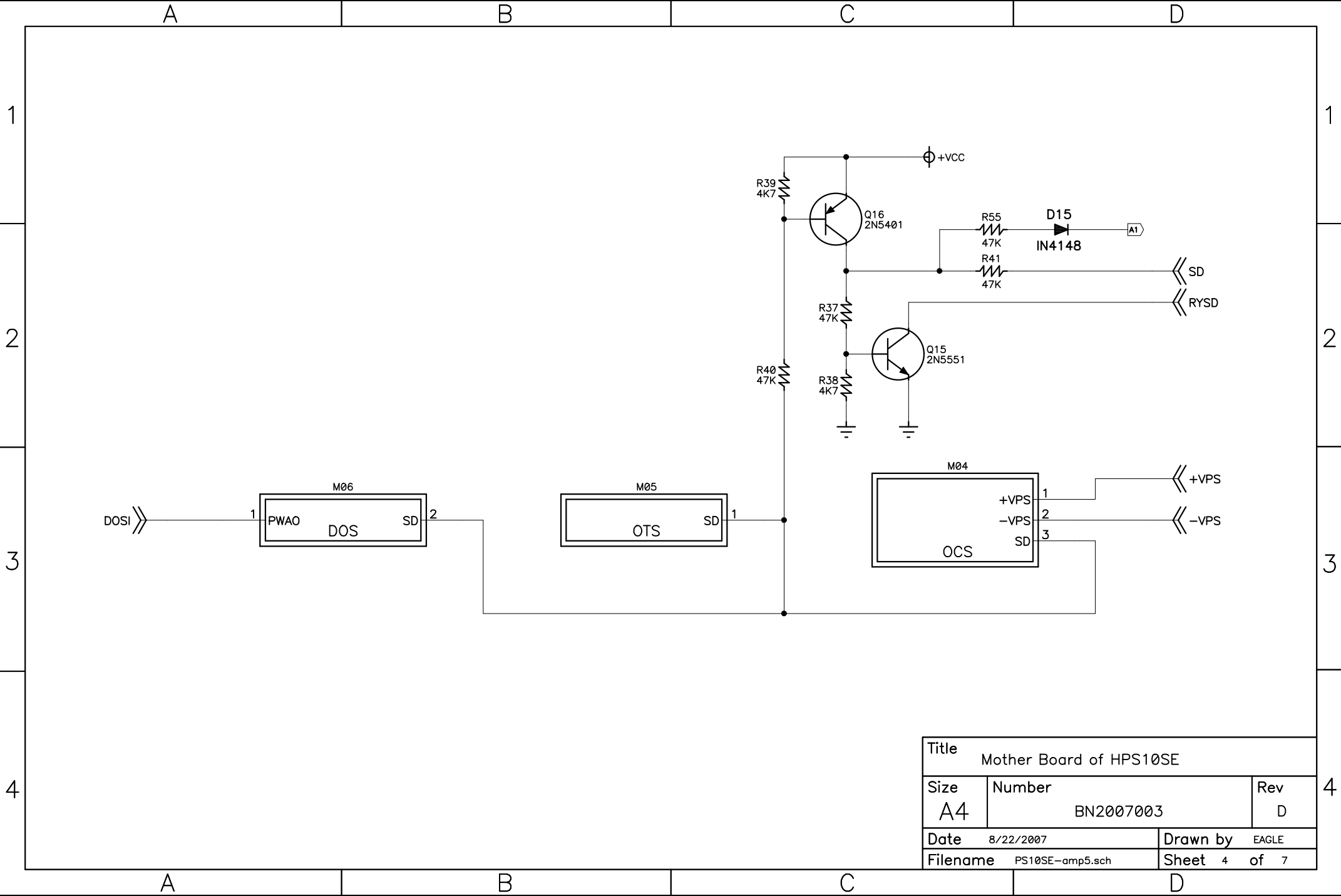
Title		
Mother Board of HPS10SE		
Size	Number	Rev
A4	BN2007003	D
Date	8/22/2007	Drawn by
Filename	PS10SE-amp5.sch	Sheet 1 of 7

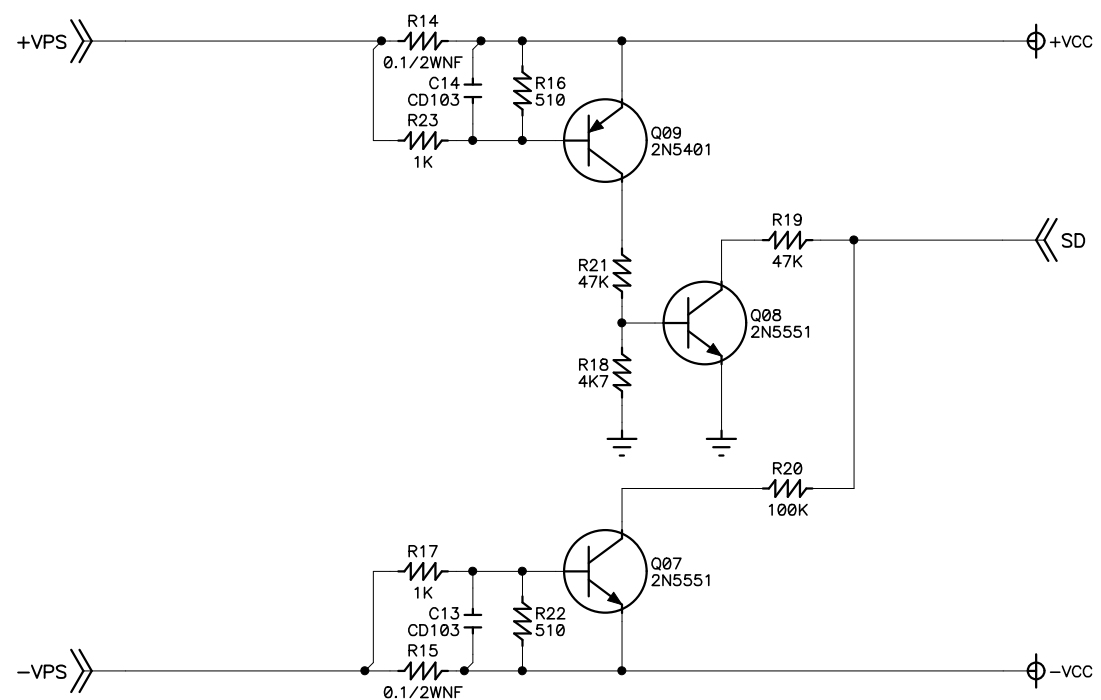


Title			Mother Board of HPS10SE		
Size	Number			Rev	
A4	BN2007003			D	
Date	8/22/2007			Drawn by	EAGLE
Filename	PS10SE-amp5.sch			Sheet	2 of 7

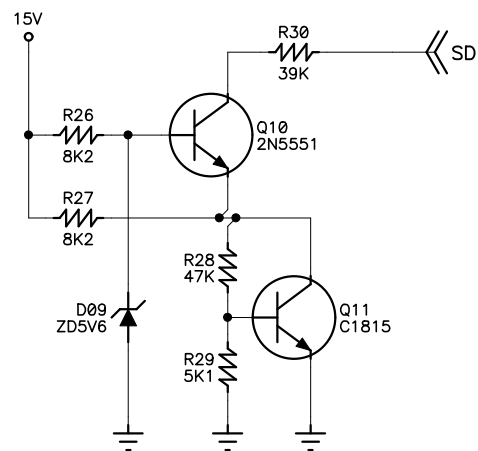


Title			
Mother Board of HPS10SE			
Size	Number		Rev
A4	BN2007003		D
Date	8/22/2007		Drawn by
Filename	PS10SE-amp5.sch		EAGLE
Sheet		3	of 7



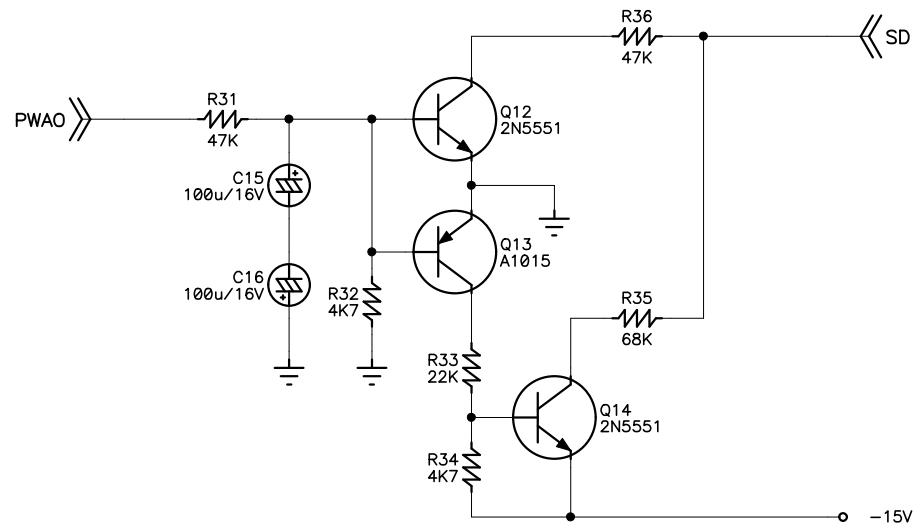


Title			Mother Board of HPS10SE		
Size	Number			Rev	
A4	BN2007003			D	
Date	8/22/2007			Drawn by	EAGLE
Filename	PS10SE-amp5.sch			Sheet	5 of 7

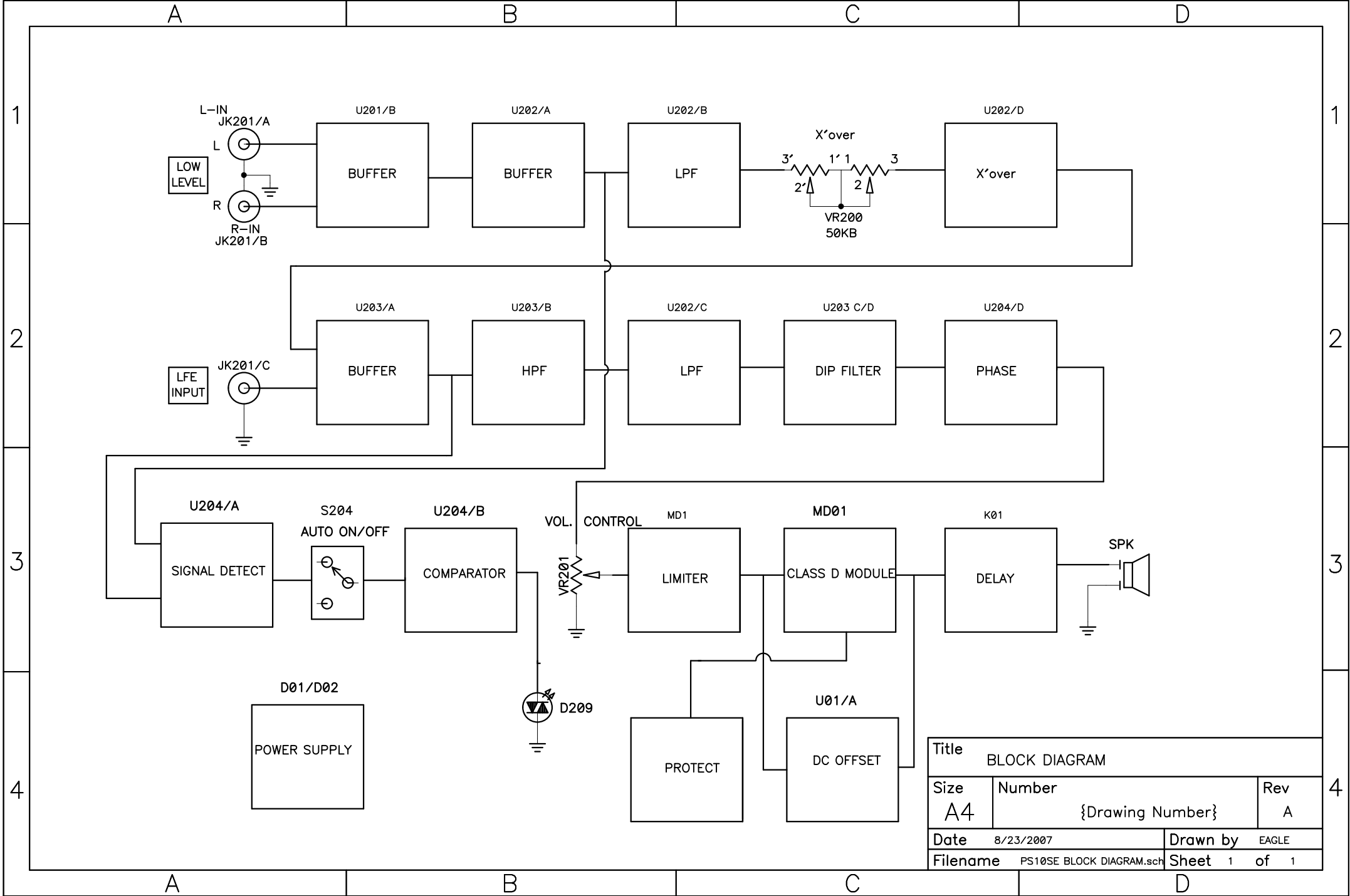


Q11 is Heat Sensor; Together with Heat Source.

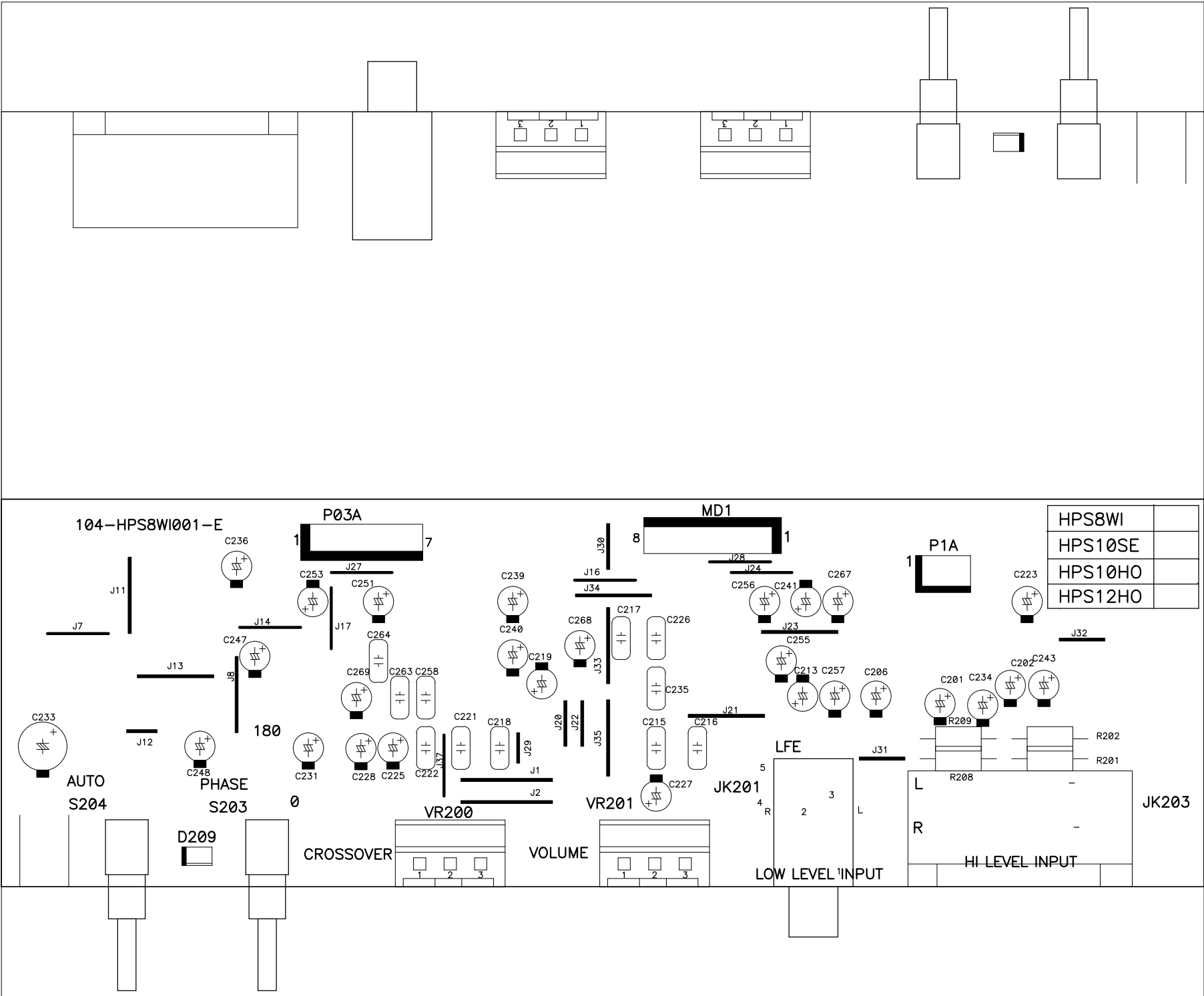
Title Mother Board of HPS10SE			
Size A4	Number BN2007003		Rev D
Date 8/22/2007	Drawn by EAGLE		
Filename PS10SE-amp5.sch	Sheet 6	of 7	

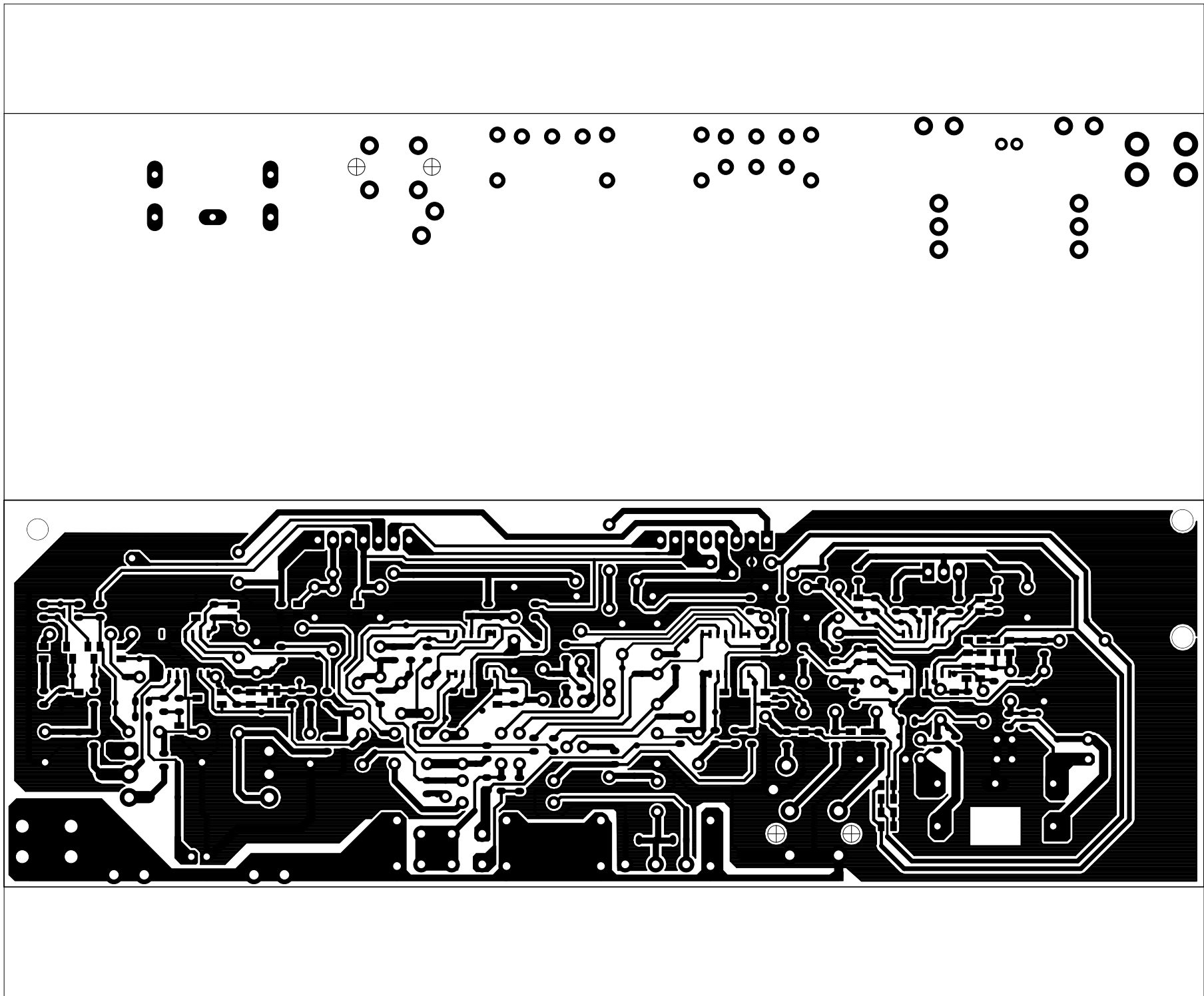


Title Mother Board of HPS10SE			
Size A4	Number BN2007003		Rev D
Date 8/22/2007	Drawn by EAGLE		
Filename PS10SE-amp5.sch	Sheet 7	of 7	

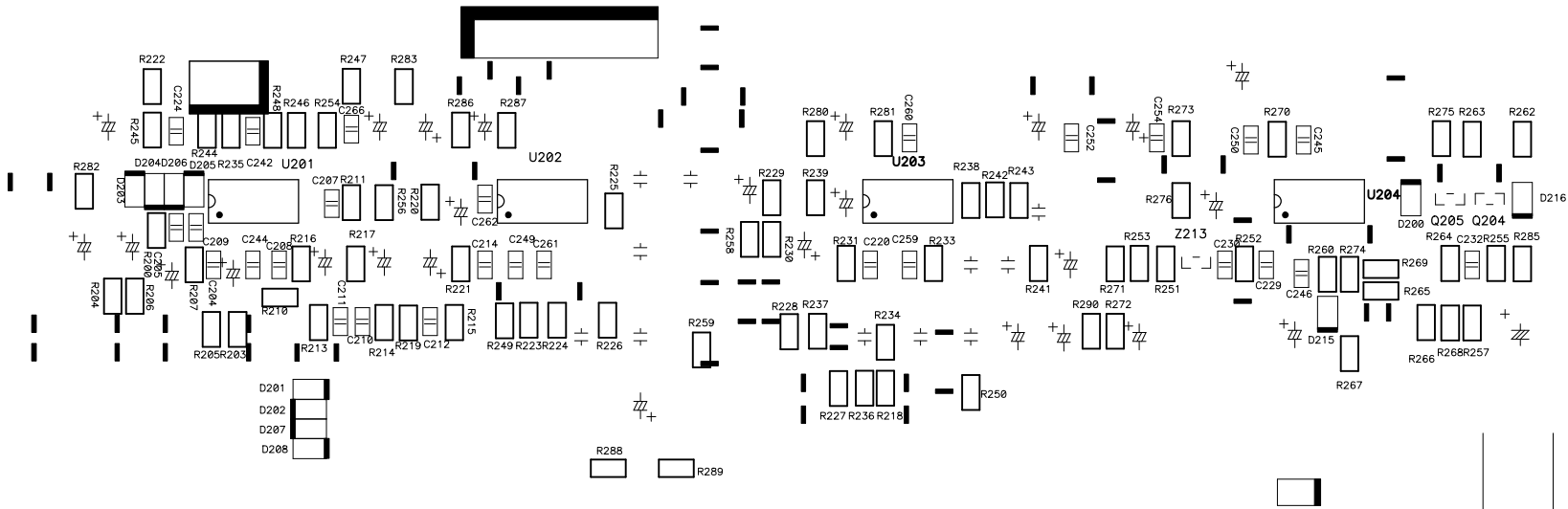


Title			BLOCK DIAGRAM
Size	Number	Rev	
A4	{Drawing Number}	A	
Date	8/23/2007	Drawn by	EAGLE
Filename	PS10SE BLOCK DIAGRAM.sch	Sheet	1 of 1

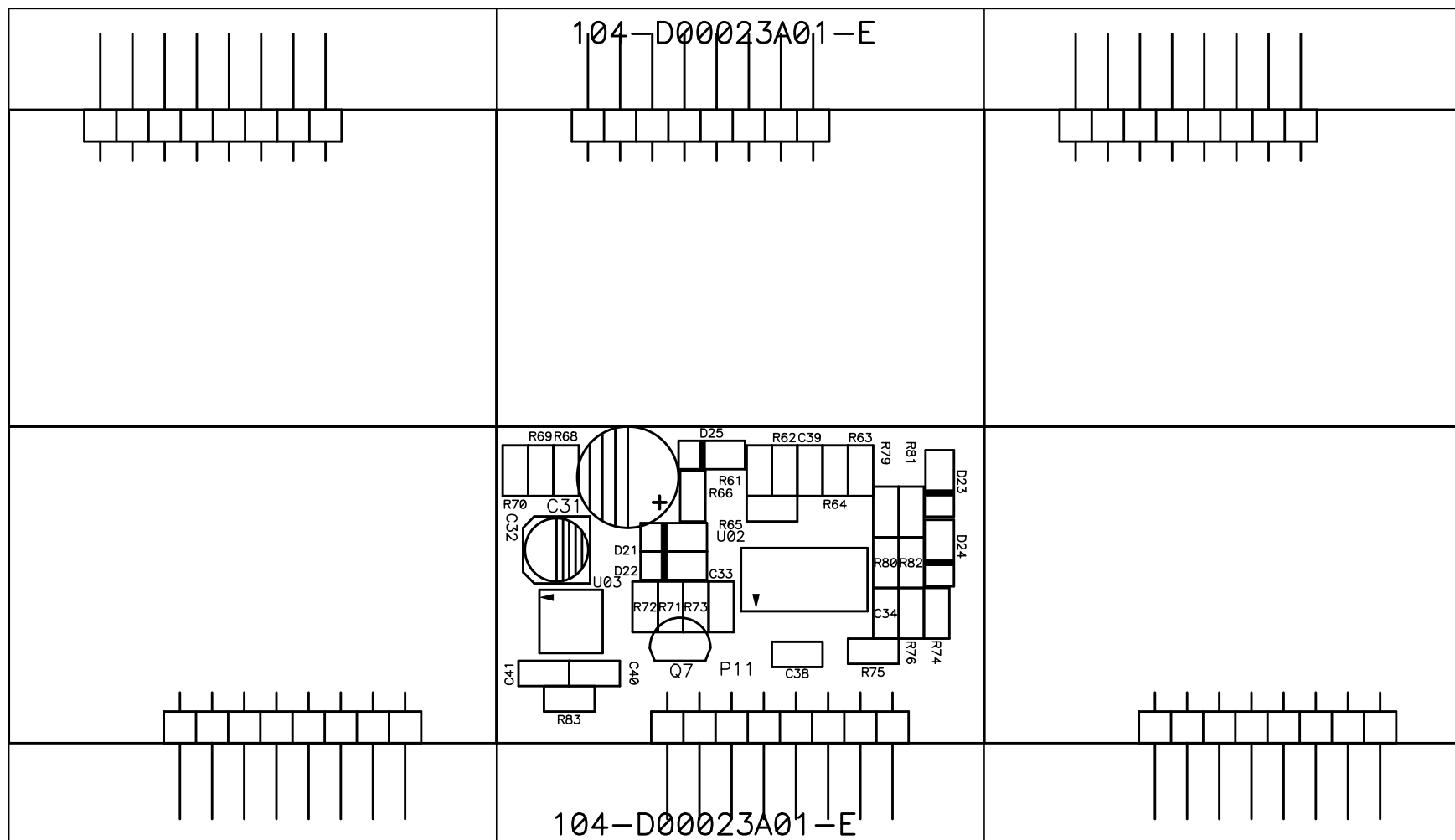


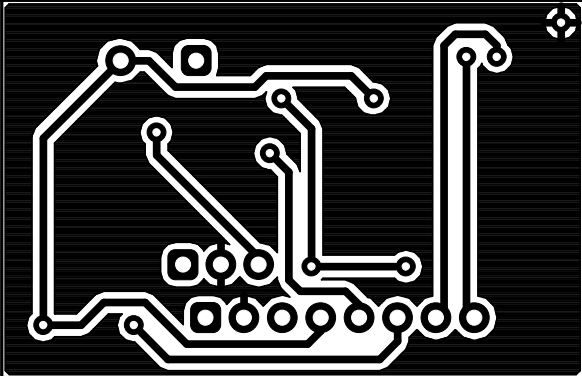


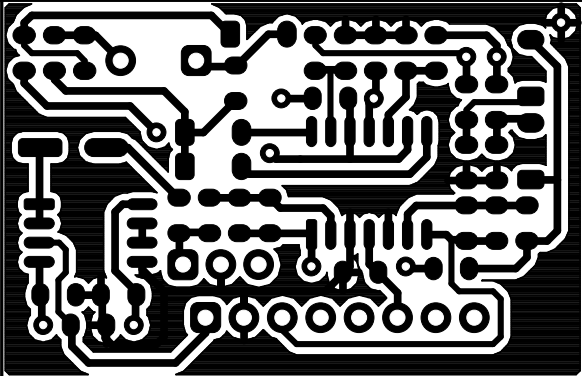
H

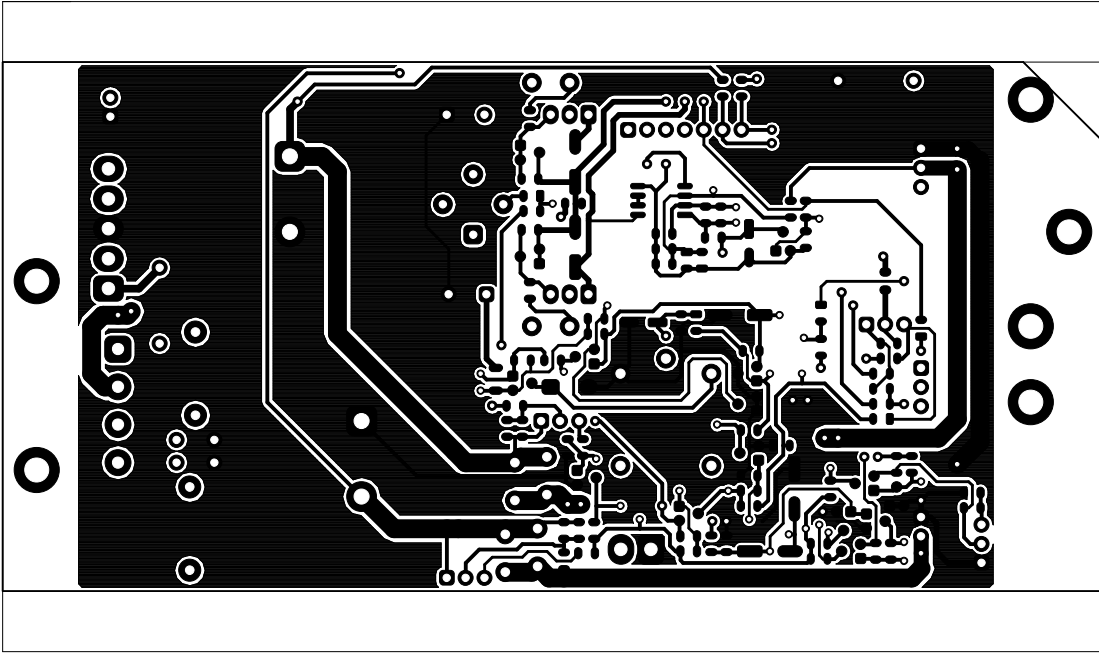


H

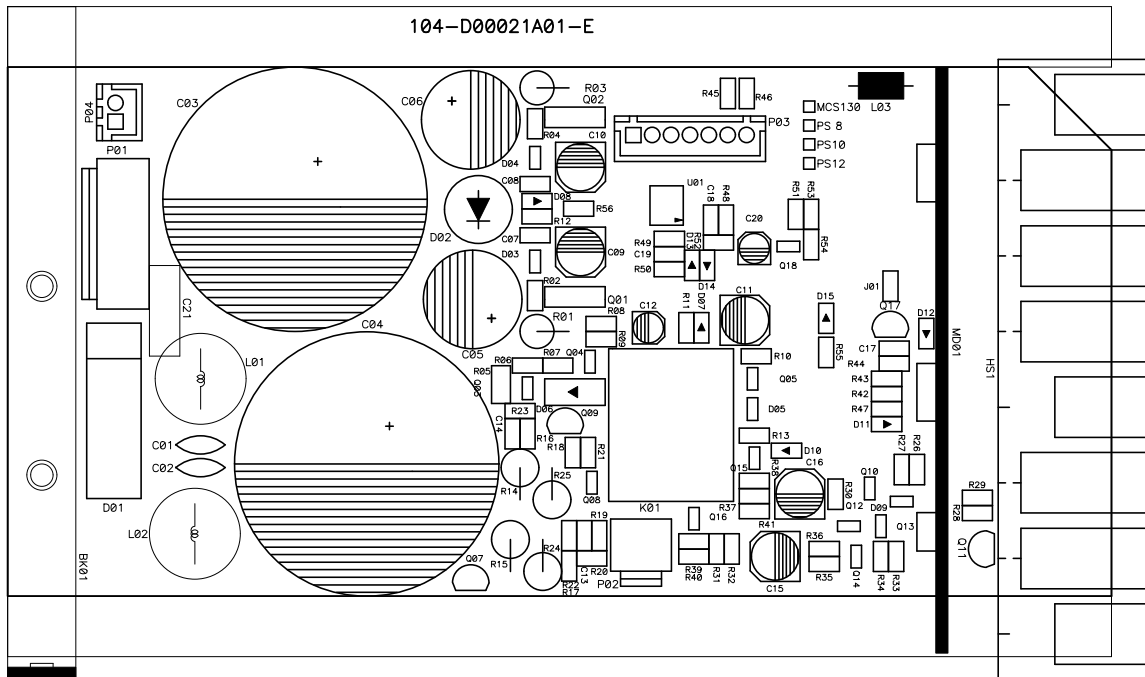


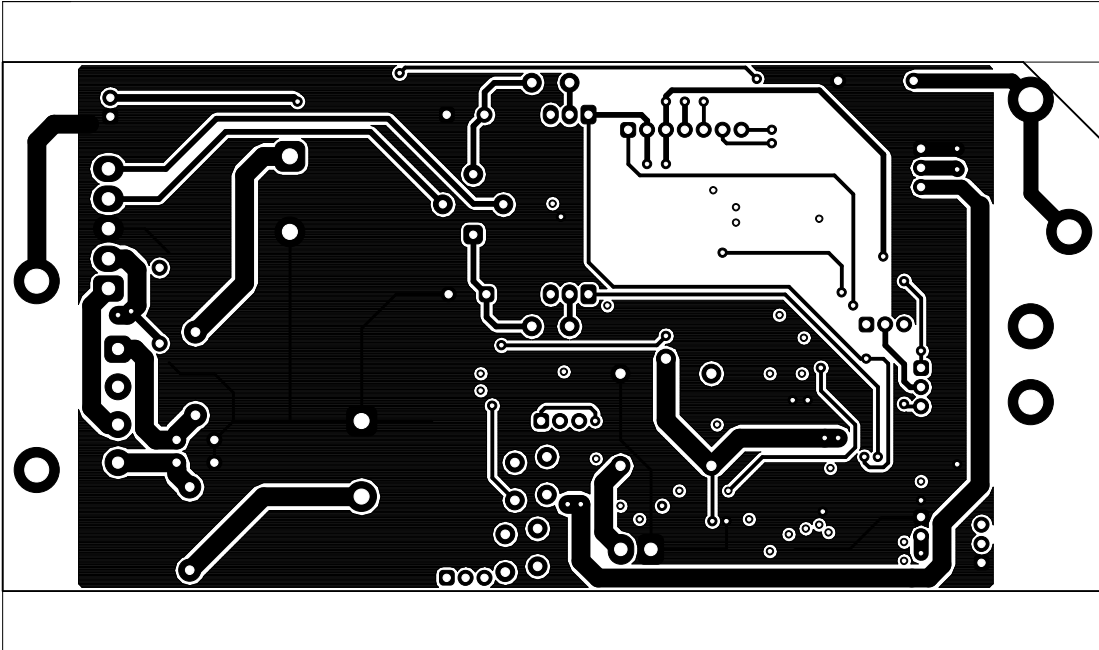
○○○○○○○○□	○○○○○○○○□	○○○○○○○○□
		
□○○○○○○○○		□○○○○○○○○

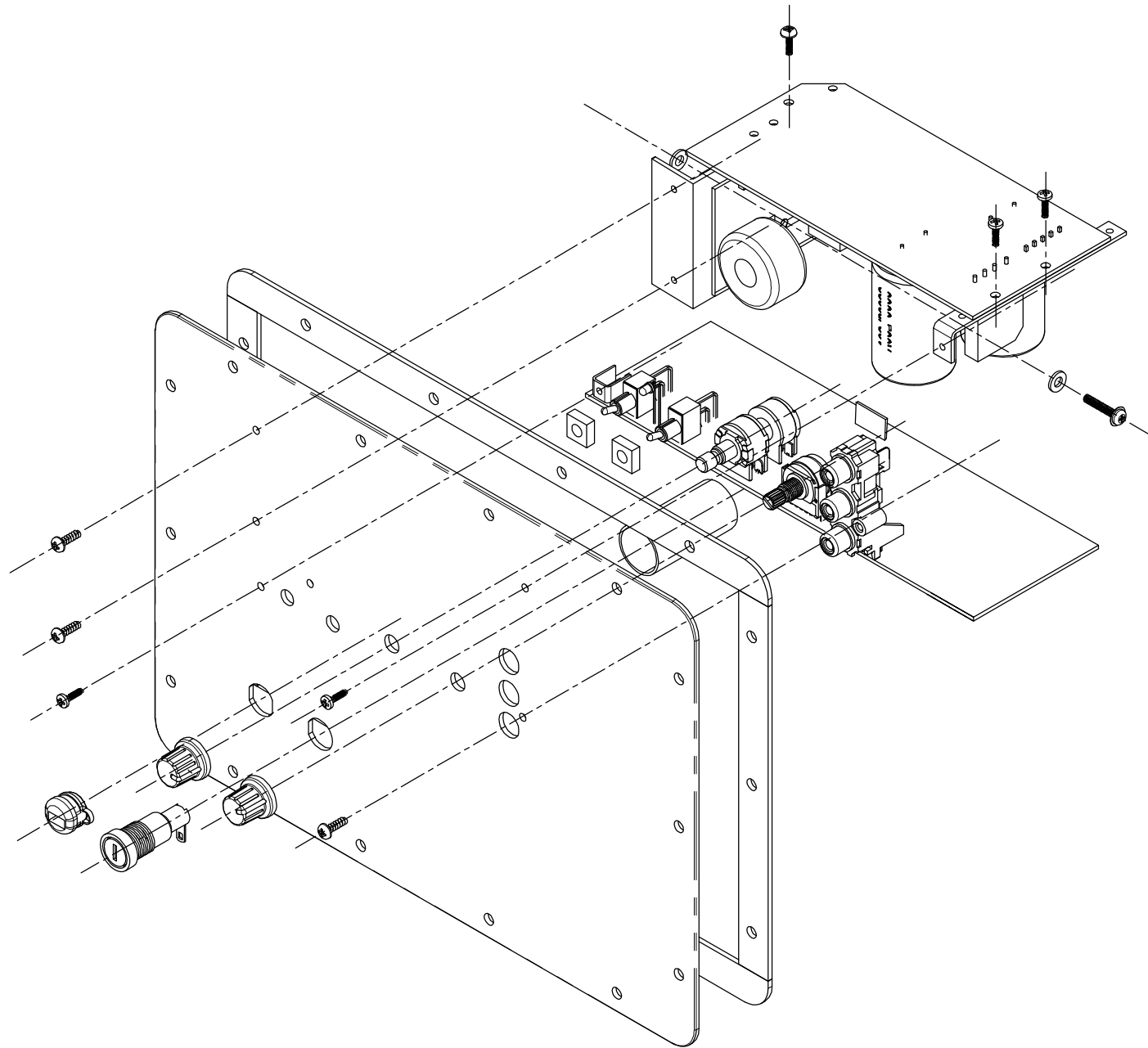
○○○○○○○○□	○○○○○○○○□	○○○○○○○○□
□○○○○○○○○		□○○○○○○○○



104-D00021A01-E







HPS10SE EXPLODED DISASSEMBLY VIEW

