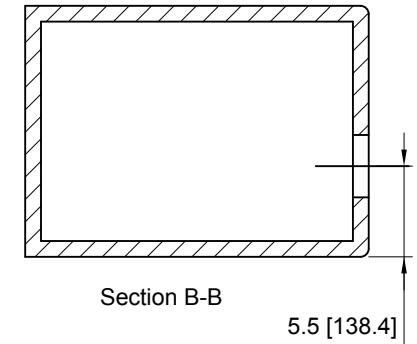
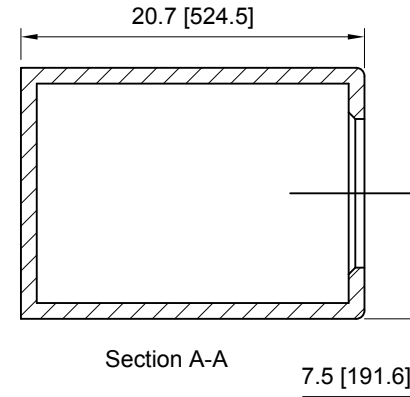
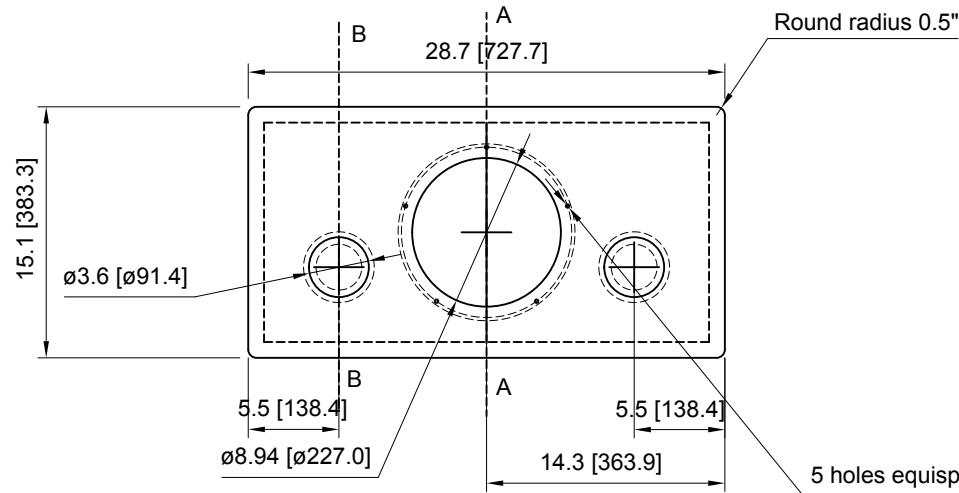
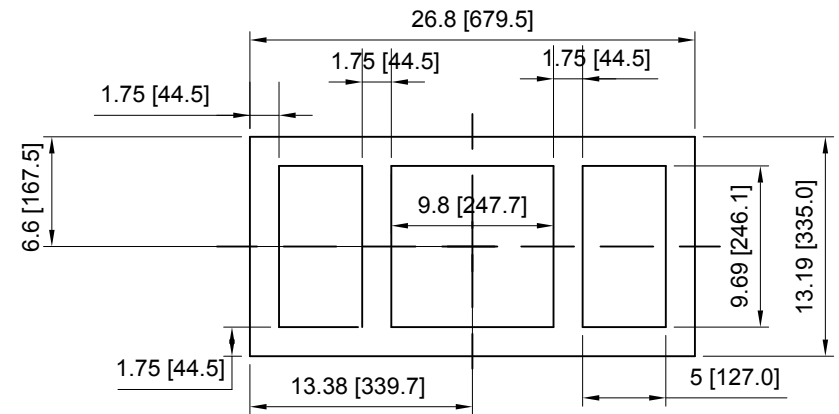
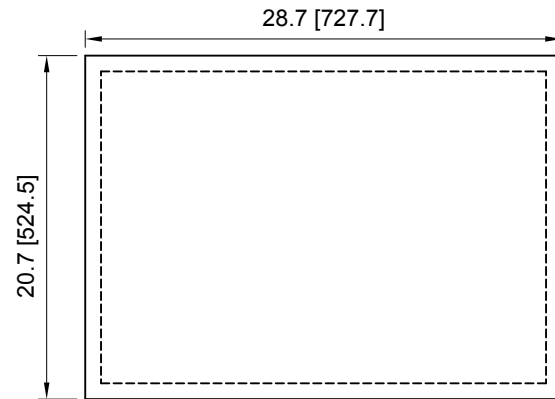


Front View

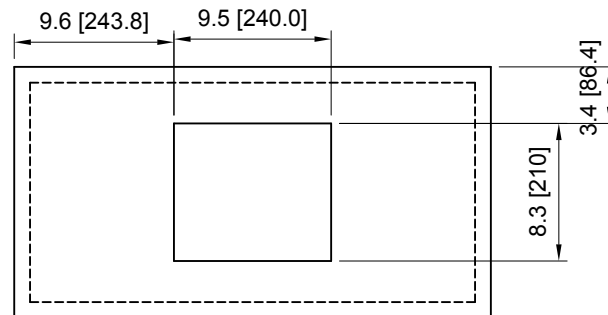


Top View



Central Bracing Plate

Back View



1. Driver: DA270-88-DVC 10inch subwoofer
2. Box Tune Frequency: Fb:24Hz
4. Box F3: 24.89
5. Gross Box Volume =108.3 ltrs
- 5.1. Net Box Volume used for unibox simulations (subtracting internal bracing, driver volume, port volume and battens volume)- 102.7ltr.
6. Unibox Calculations are tuned to 102.7 ltr, with port dia of 2 x 2.75" and 14-18inch length
- 6.1. For bracing and batton dimensions, pl refer subwoofer vol calc golden ratio xls file
7. subwoofer is surface mounted
8. sub-plate amp cut out dims incorporated, to be confirmed from actual part.
9. Box material is MDF- 2\*12mm sandwiched

Main Units are in Inches, Units in brackets are in mm