

STE Series

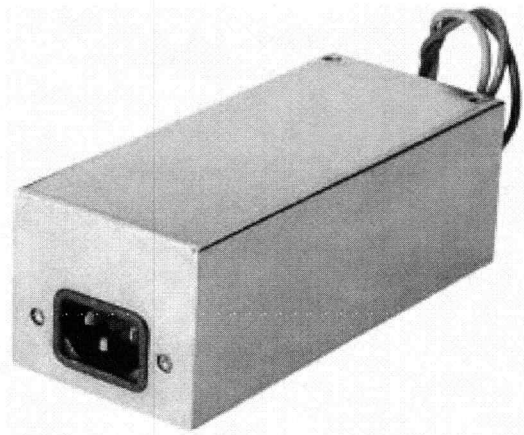
Switching Transient Filters



UL File No. E62459
CSA File No. LR49272
TUV File #R30001
VDE File #51473



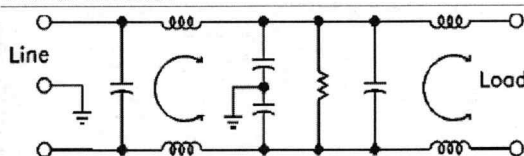
RoHS



Applications

The STE series of EM filters are designed to reduce equipment interference effectively to help meet VDE 0871/0875 requirements. These filters reduce switching transients to acceptable levels by combining common and differential mode rejection characteristics and by providing optimum performance at minimum leakage current.

Electrical Schematic



How to define a part number:

STE

Series

3

Case
Style

-

3

Current
Rating

Specifications

Voltage rating: 115/250 VAC
Line frequency: 50/60 Hz
Leakage current:* 0.25 mA maximum at 115 V, 60 Hz
(line-to-ground) 0.50 mA maximum at 250 V, 50 Hz
Test voltage: Line to ground, 2250 VDC
Line to line, 1450 VDC

Common Mode

Models	Frequency (MHz)						
	.01	.05	.15	.2	.5	10	20
All	1	10	58	60	65	60	57

Differential Mode

Models	Frequency (MHz)						
	.01	.05	.15	.2	.5	10	20
All	1	4	36	50	65	65	55

Minimum Insertion loss in 50 ohm system per MIL-STD-220A

SAE Power Inc.
1500 East Hamilton Ave.
Campbell, CA 95008

T: (408) 369-2200
F: (408) 369-4911
<http://www.sae-power.com>

SAE
POWER

STE Series

Ordering Information

Current Rating	Part Number	Dimensions (mm)				
		A	B	C	D	E
1	STE1-1	63.5	50.8	44.45	74.68	84.32
	STE2-1	63.5	50.8	44.45	74.68	84.32
	STE3-1	63.5	50.8	44.45	74.68	84.32
3	STE1-3	63.5	50.8	44.45	74.68	84.32
	STE2-3	63.5	50.8	44.45	74.68	84.32
	STE3-3	63.5	50.8	44.45	74.68	84.32
	STE7-3*	63.5	50.8	44.45	40.0	16.0
	STE8-3*	63.5	50.8	44.45	40.0	16.0

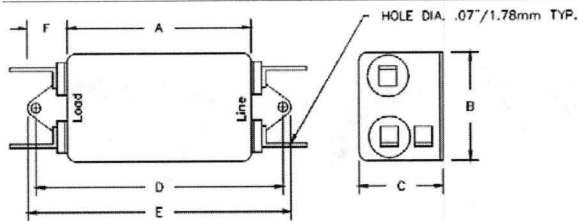
* To designate metric mounting, add the suffix "M" before the "-", eg: STE7M-3

0.250 Tab Terminals extend 14.73mm.
8-32 x 0.67 Threaded Terminals extend 26.5mm (max).
18 AWG wire leads extend 107.95mm (max).
Mounting Hole Diameters are 4.78mm.

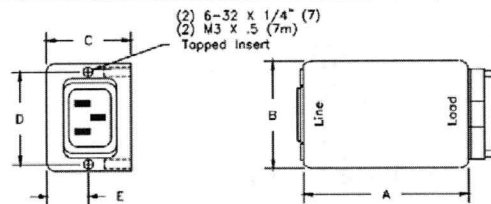
Ordering Information

Current Rating	Part Number	Dimensions (mm)				
		A	B	C	D	E
6	STE1-6	133.35	50.8	57.15	143.0	152.0
	STE2-6	133.35	50.8	57.15	143.0	152.0
	STE3-6	133.35	50.8	57.15	143.0	152.0
	STE7-6*	133.35	57.15	50.8	40.0	16.0
	STE8-6*	133.35	57.15	50.8	40.0	16.0
10	STE1-10	133.35	50.8	69.85	143.0	152.0
	STE2-10	133.35	50.8	69.85	143.0	152.0
	STE3-10	133.35	50.8	69.85	143.0	152.0
	STE7-10*	133.35	57.15	50.8	40.0	16.0
	STE8-10*	133.35	57.15	50.8	40.0	16.0

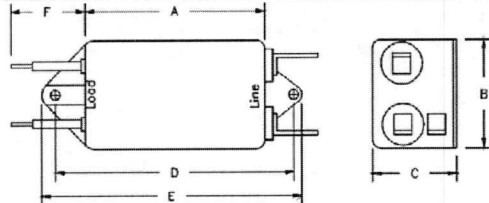
Style 1:



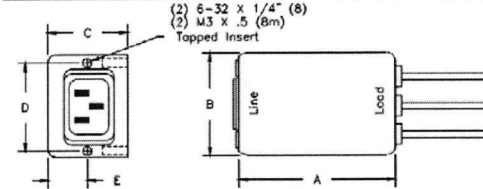
Style 7 or 7M:



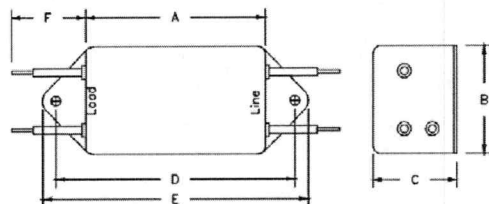
Style 2:



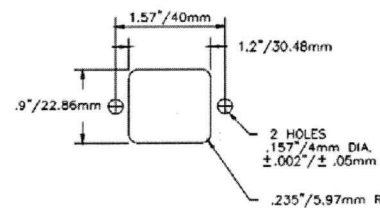
Style 8 or 8M:



Style 3



Panel Cutout



SAE Power Inc.
1500 East Hamilton Ave.
Campbell, CA 95008

T: (408) 369-2200
F: (408) 369-4911
<http://www.saepower.com>

SAE
POWER