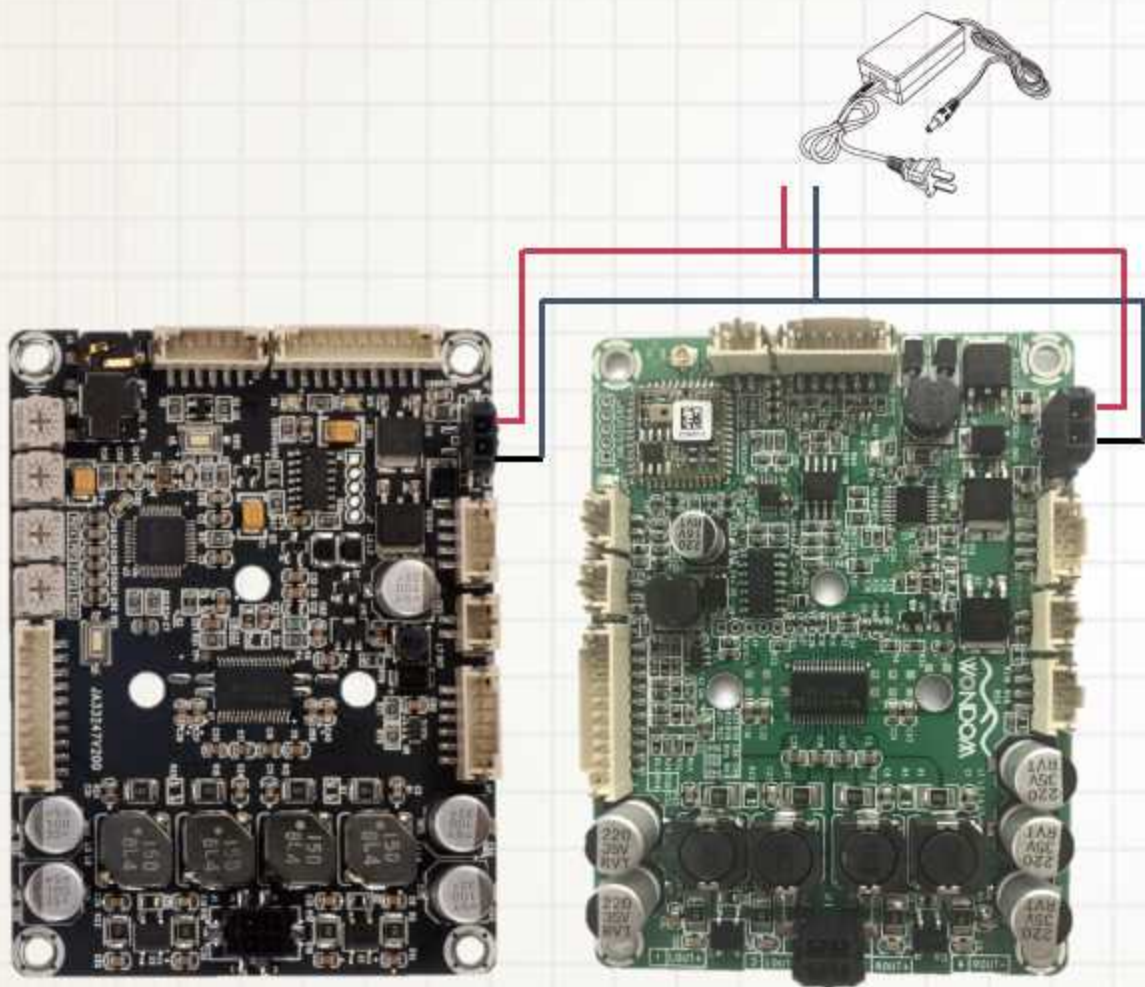




# Steps & Connections

## Step 1: Power (Powered by Power Adapter)



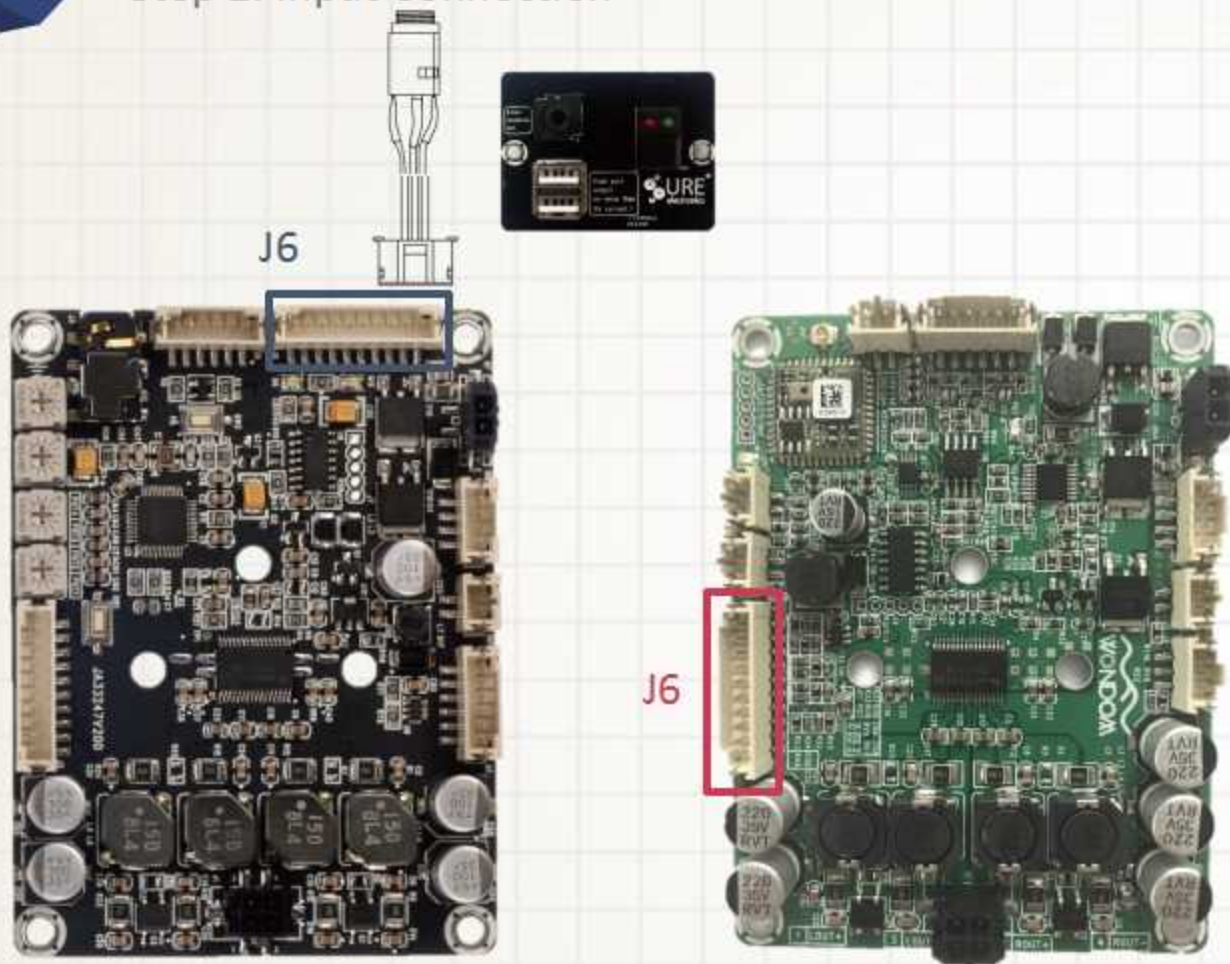
- JAB2 and JAB3 can be powered separately by two different adapters.
- It is suggested to power JAB2 and JAB3 using one adapter, see connection in picture.

Note: Sure Electronics will provide one power cable together with each JAB main board. If customers want JAB2 and JAB3 to be powered by one adapter, please buy AA-JA1116 functional cables kit for JAB2 and JAB3.



# Steps & Connections

## Step 2: Input Connection



If you don't want to use the Bluetooth on JAB2 as the signal input, there are two ways to get analog signal input:

- AUX In cable(Connect 5Pos AUX cable to J6 on JAB3, only five pins will be required, see picture.)

PIN 1 LED2  
PIN 2 KEY2  
PIN 3 RIN  
PIN 4 GND  
PIN 5 LIN

Extension Connector:  
J6 PH-10PIN-2MM

Pin	Definition
1	VCC
2	VCC
3	GND
4	LED1
5	KEY1
6	LIN
7	GND
8	RIN
9	KEY2
10	LED2

- Interface Extension Board

Note: When the Interface Extension Board is connected to JAB3, the ON/OFF switch will malfunction.





# Steps & Connections

## Step 3: Output Connection



J10



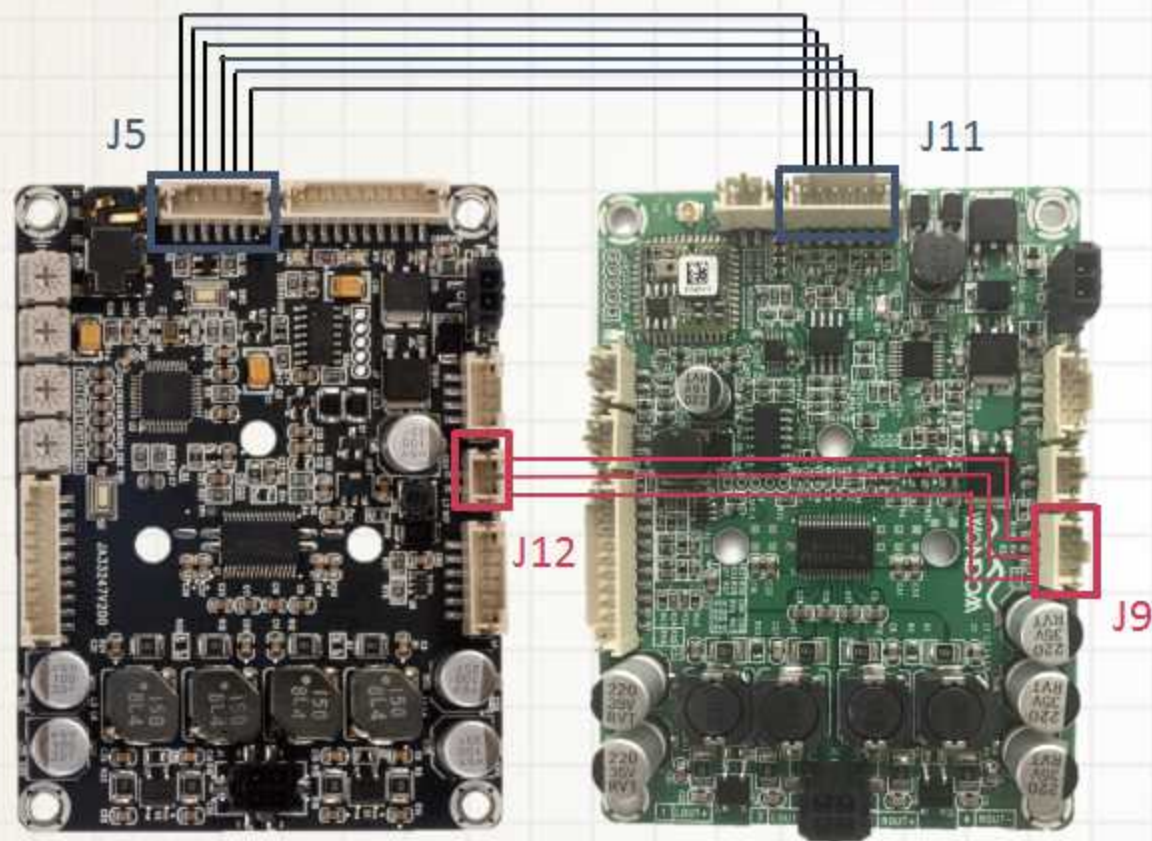
J2

- Connect J10 on JAB3 to Subwoofer.
- Connect J2 on JAB2 to Stereo Loudspeaker.
- J3 on JAB3 can be used as the headphone output.



# Steps & Connections

## Step 4: Connection Between JAB2 and JAB3



- Audio Connection: Connect J5 on JAB3 to J11 on JAB2.
- Control Connection: Connect J12 on JAB3 to J9 on JAB2 . (Pop sound will be effectively eliminated under this connection.)

Note:

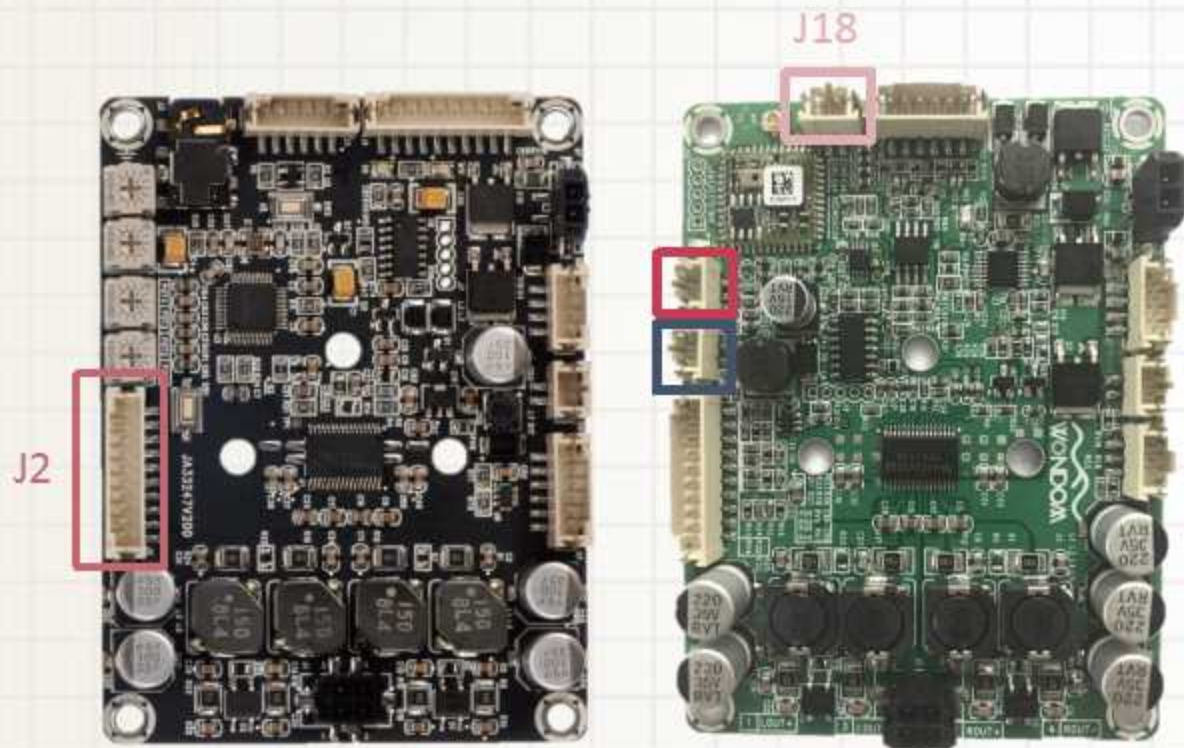
1. When JAB3 is used independently, Port J12 is used to be connected to switch cable.
2. When JAB3 is used to work with JAB2, make sure J9 on JAB2 and J12 on JAB3 is connected by a 3Pos cable, then J5 on JAB2 will be used to be connected to switch cable.





# Steps & Connections

## Step 5: External LED Indicator & Control



J7 Bluetooth LED Indicator



J8 MPPT LED Indicator

- Connect J7 on JAB2 to Bluetooth LED Indicator. Connect J8 on JAB2 to MPPT LED Indicator.
- J18 is connected to Bluetooth Switch (Short Pressing can cancel the Connection while Press and hold on can make the Bluetooth be off).

Note:

1. Either J6 on JAB2 or J6 on JAB3 can be connected to Interface Extension Board.
2. J2 on JAB3 is extension port of DSP and digital output. For this version, the function is not available now.