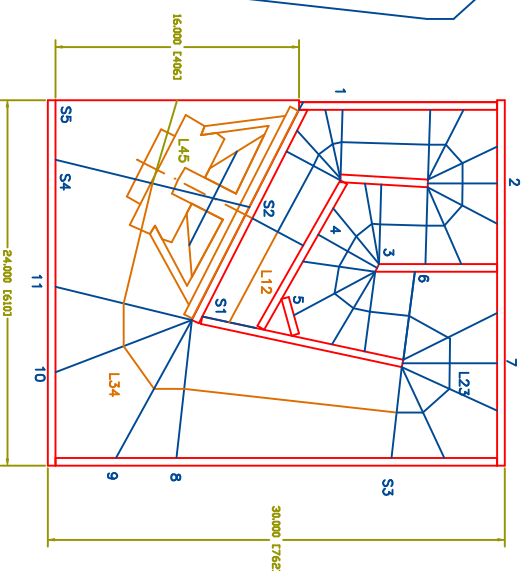
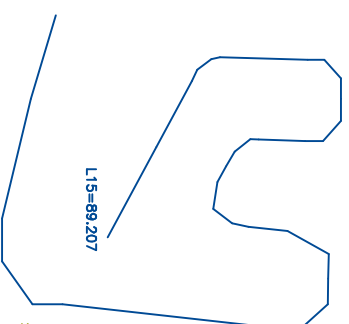
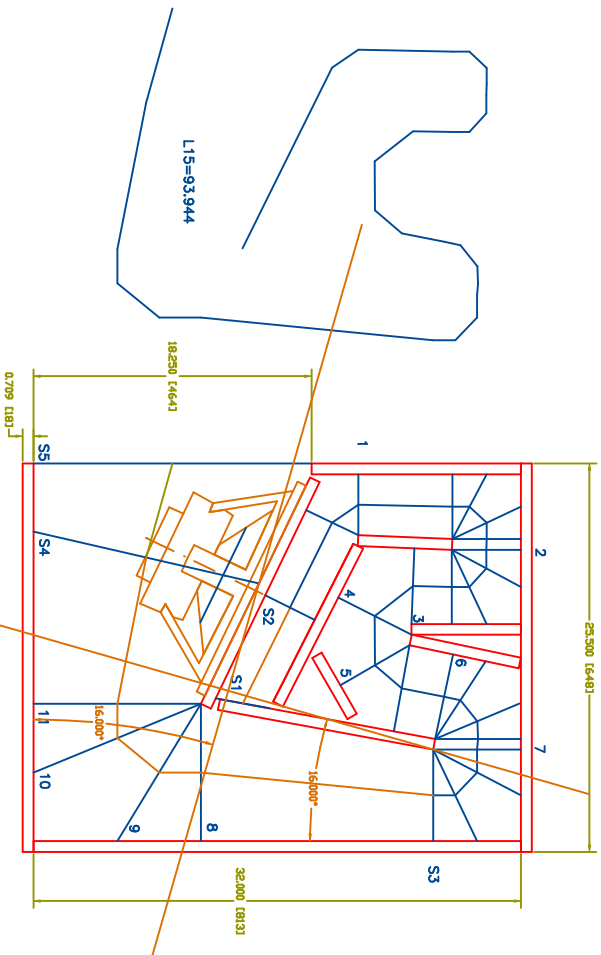


SS15



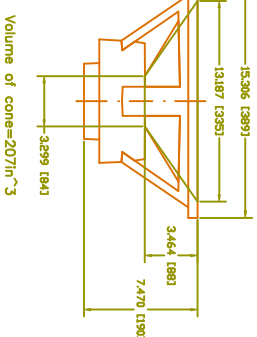
Notes:
Material: 709° [18mm] Plywood
Width, ext.: 22 [359mm]
(dimensions in inch/mm)

Length@S1=3.615
Length@S2=3.670
Length@S3=6.000
Length@S4=15.191
Length@S5=18.250

L12=7.015
L23=46.839
L34=33.680
L45=6.410

4pyros_2011_Mar08.dwg

Redraw of Mod_SS15, by 4pyros, Mar 08, 2011



Volume of cone=207in³

Length@S1=3.624
Length@S2=3.791
Length@S3=6.010
Length@S4=13.111
Length@S5=16.0(16.26)

L12=6.726
L23=46.406
L34=30.365
L45=5.711

Drawing revised using sohoh4's corner method.
From: jbelis_singlesheet_new_2010_Aug18.dwg

