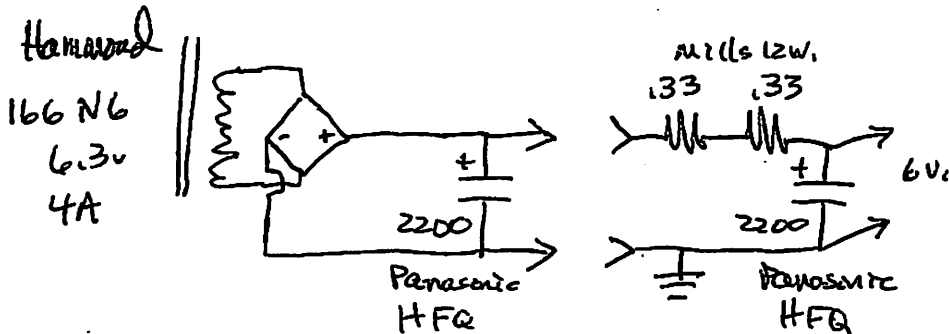
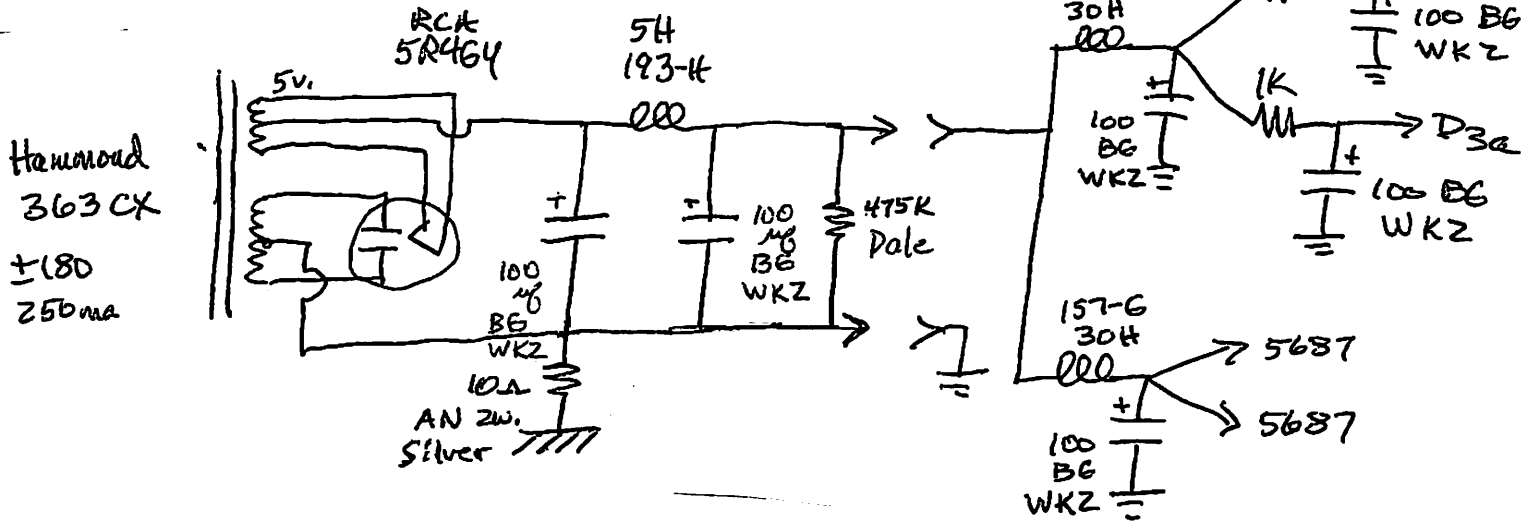
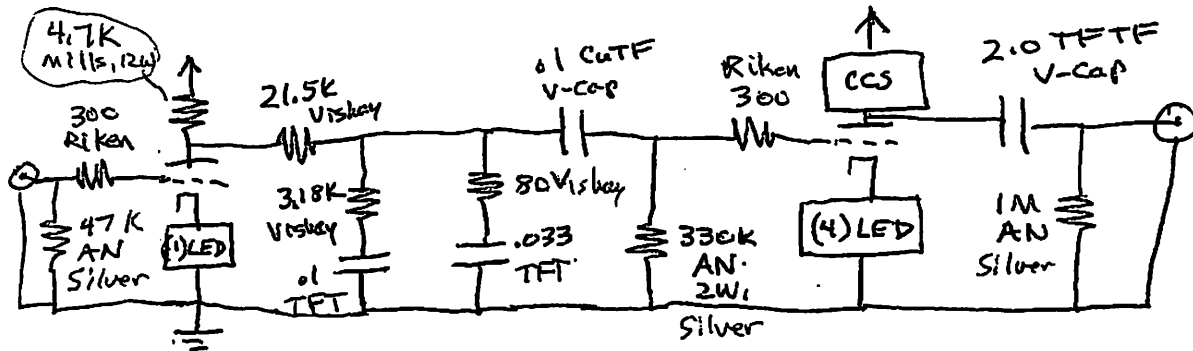


D3a (in triode)

5687 (1/2)



### Notes:

- Outboard Power Supply
- CCS is pair of DN 2540
- RIAA resistors are 1% Viskay (nude)
- RIAA caps are 1% Rel-Cap TFT Teflon
- AN resistors are Audio Note tantalum, 2W Silver

Phono Preamp

12-13-2018

Salectric