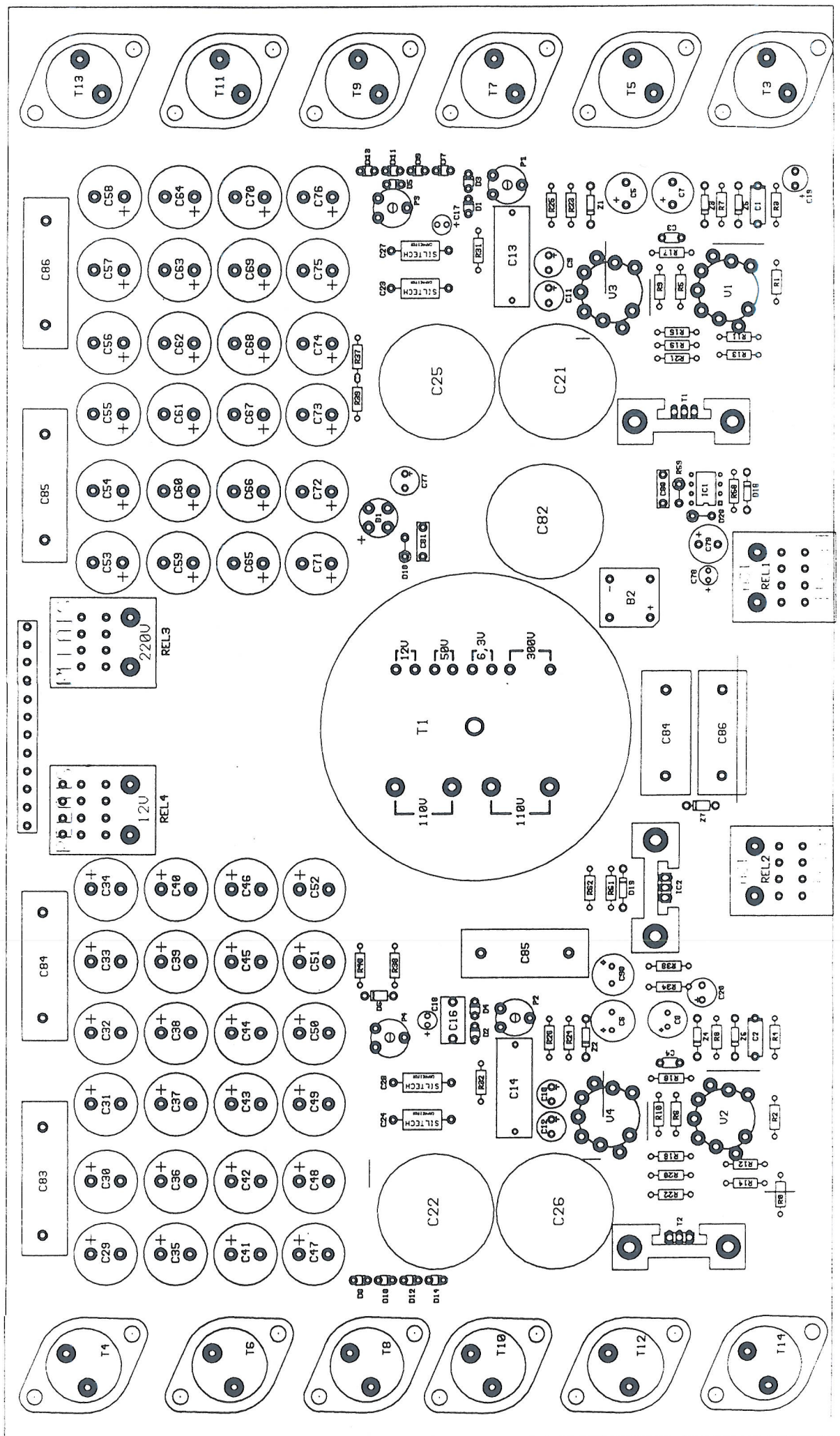


*SPHINX PROJECT FOURTEEN*  
*SERVICE MANUAL*

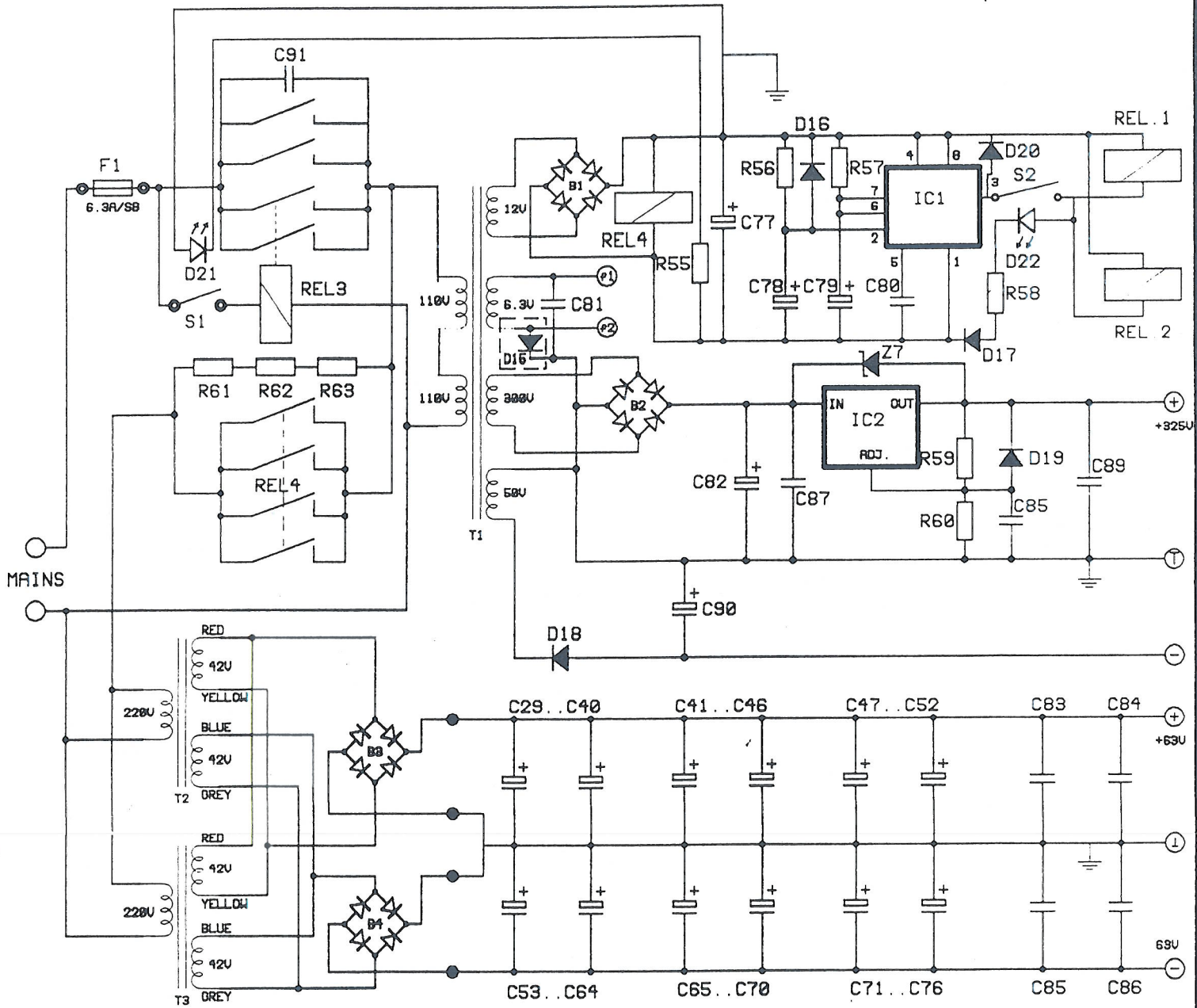
*APRIL 1992*



# SPHINX PJ14 POWER SUPPLY

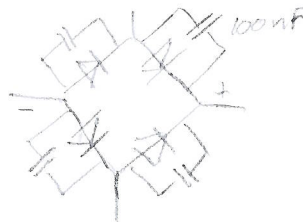
PJ14  
DATE: 16-APRIL-1991  
SILTECH E. EGGEN

DRAWN :  
16-APRIL-1991



*Gelgkridlers ontkoppelen*

[ ] = UNDERSIDE PCB.



FILE NAME:  
14PS.SCH

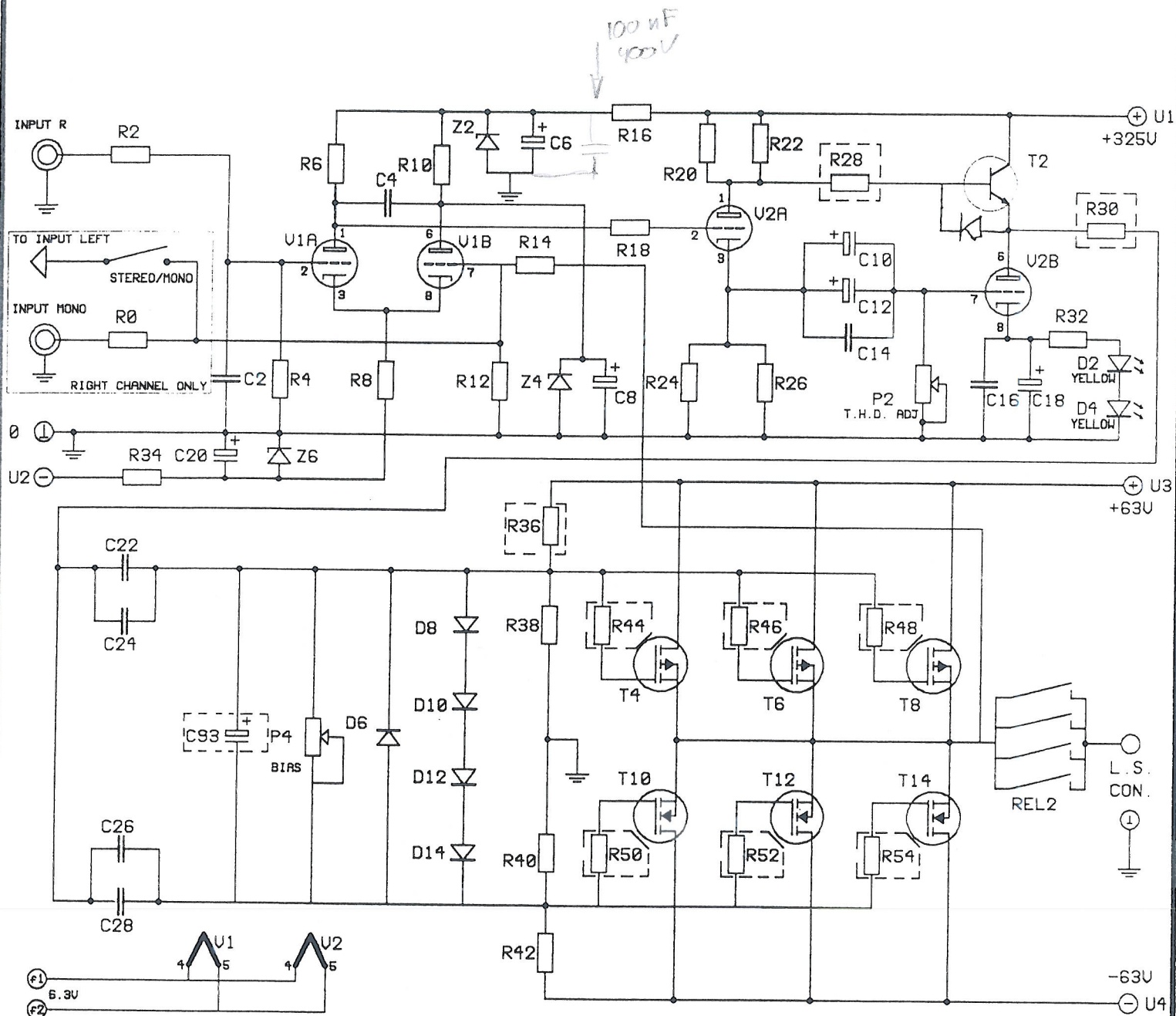
VERSION NR:



# SPHINX PJ14 AMPLIFIER

PJ14  
DATE: 16-APRIL-1991  
SILTECH E. EGGEN

DRAWN :  
16-APRIL-1991



[ ] = UNDERSIDE PCB.

FILE NAME:  
PJ14.SCH

VERSION NR:

Symbol No.	Part No.	Description
11		jumper 0R00
R000		resistor 1K69 metalfilm 2%
R001		resistor 1K50 metalfilm 2%
R002		resistor 1K50 metalfilm 2%
R003		resistor 22K1 metalfilm 2%
R004		resistor 22K1 metalfilm 2%
R005		resistor 68K1 metalfilm 2%
R006		resistor 68K1 metalfilm 2%
R007		resistor 8K25 metalfilm 2%
R008		resistor 8K25 metalfilm 2%
R009		resistor 68K1 metalfilm 2%
R010		resistor 68K1 metalfilm 2%
R011		resistor 2K00 metalfilm 2%
R012		resistor 2K00 metalfilm 2%
R013		resistor 68K1 metalfilm 2%
R014		resistor 68K1 metalfilm 2%
R015		resistor 68K1 metalfilm 2%
R016		resistor 68K1 metalfilm 2%
R017		resistor 1K00 metalfilm 2%
R018		resistor 1K00 metalfilm 2%
R019		resistor 110K metalfilm 2%
R020		resistor 110K metalfilm 2%
R021		resistor 110K metalfilm 2%
R022		resistor 110K metalfilm 2%
R023		resistor 68K1 metalfilm 2%
R024		resistor 68K1 metalfilm 2%
R025		resistor 68K1 metalfilm 2%
R026		resistor 68K1 metalfilm 2%
R027		resistor 100R metalfilm 2%
R028		resistor 100R metalfilm 2%
R029		resistor 82R5 metalfilm 2%
R030		resistor 82R5 metalfilm 2%
R031		resistor 56R2 metalfilm 2%
R032		resistor 56R2 metalfilm 2%
R033		resistor 18K2 metalfilm 2%
R034		resistor 18K2 metalfilm 2%
R035		resistor 200K metalfilm 2%
R036		resistor 200K metalfilm 2%
R037		resistor 47K5 metalfilm 2%
R038		resistor 47K5 metalfilm 2%
R039		resistor 47K5 metalfilm 2%
R040		resistor 47K5 metalfilm 2%
R041		resistor 200K metalfilm 2%
R042		resistor 200K metalfilm 2%
R043		resistor 332R metalfilm 2%
R044		resistor 332R metalfilm 2%
R045		resistor 332R metalfilm 2%
R046		resistor 332R metalfilm 2%
R047		resistor 332R metalfilm 2%
R048		resistor 332R metalfilm 2%
R049		resistor 178R metalfilm 2%
R050		resistor 178R metalfilm 2%
R051		resistor 178R metalfilm 2%
R052		resistor 178R metalfilm 2%
R053		resistor 178R metalfilm 2%
R054		resistor 178R metalfilm 2%
R055		resistor 1K00 metalfilm 2%
R056		resistor 1M00 metalfilm 2%
R057		resistor 294K metalfilm 2%
R058		resistor 1K00 metalfilm 2%
R059		resistor 392R metalfilm 2%
R060		resistor 100K metalfilm 2% 1W
R061		resistor 10R0 metalfilm 2% 17W
R062		resistor 10R0 metalfilm 2% 17W
R063		resistor 10R0 metalfilm 2% 17W

## PJ14

Symbol No.	Part No.	Description
C001		220pF styroflex
C002		220pF styroflex
C003		33pF keramisch
C004		33pF keramisch
C005		10μF 350V
C006		10μF 350V
C007		100μF 16V
C008		100μF 16V
C009		10μF 100V
C010		10μF 100V
C011		10μF 100V
C012		10μF 100V
C013		330nF RIFA 430 250V
C014		330nF RIFA 430 250V
C015		220nF ERO MKC1862 100V
C016		220nF ERO MKC1862 100V
C017		22μF 16V
C018		22μF 16V
C019		220μF 16V (onderzijde)
C020		220μF 16V (onderzijde)
C021		5μF Siltech
C022		5μF Siltech
C023		10nF Siltech
C024		10nF Siltech
C025		5μF Siltech
C026		5μF Siltech
C027		10nF Siltech
C028		10nF Siltech
C029		2200μF 63V
C030		2200μF 63V
C031		2200μF 63V
C032		2200μF 63V
C033		2200μF 63V
C034		2200μF 63V
C035		2200μF 63V
C036		2200μF 63V
C037		2200μF 63V
C038		2200μF 63V
C039		2200μF 63V
C040		2200μF 63V
C041		1000μF ELNA ARE 63V
C042		1000μF ELNA ARE 63V
C043		1000μF ELNA ARE 63V
C044		1000μF ELNA ARE 63V
C045		1000μF ELNA ARE 63V
C046		1000μF ELNA ARE 63V
C047		220μF ELNA ARA 63V
C048		220μF ELNA ARA 63V
C049		220μF ELNA ARA 63V
C050		220μF ELNA ARA 63V
C051		220μF ELNA ARA 63V
C052		220μF ELNA ARA 63V
C053		2200μF 63V
C054		2200μF 63V
C055		2200μF 63V
C056		2200μF 63V
C057		2200μF 63V
C058		2200μF 63V
C059		2200μF 63V
C060		2200μF 63V
C061		2200μF 63V
C062		2200μF 63V
C063		2200μF 63V
C064		2200μF 63V

## PJ14

Symbol No.	Part No.	Description
C065		1000μF ELNA ARE 63V
C066		1000μF ELNA ARE 63V
C067		1000μF ELNA ARE 63V
C068		1000μF ELNA ARE 63V
C069		1000μF ELNA ARE 63V
C070		1000μF ELNA ARE 63V
C071		220μF ELNA ARA 63V
C072		220μF ELNA ARA 63V
C073		220μF ELNA ARA 63V
C074		220μF ELNA ARA 63V
C075		220μF ELNA ARA 63V
C076		220μF ELNA ARA 63V
C077		220μF 16V
C078		3μ3F 63V
C079		100μF 25V
C080		100nF Siemens
C081		47nF Siemens
C082		330μF SNAP IN 400V
C083		1μF RIFA 430 400V
C084		1μF RIFA 430 400V
C085		1μF RIFA 430 400V
C086		1μF RIFA 430 400V
C087		220nF MKP
C088		220nF MKP
C089		220nF MKP
C090		100μF 100V

## PJ14

Symbol No.	Part No.	Description
D001		LED GEEL
D002		LED GEEL
D003		LED GEEL
D004		LED GEEL
D005		1N4148
D006		1N4148
D007		1N4148
D008		1N4148
D009		1N4148
D010		1N4148
D011		1N4148
D012		1N4148
D013		1N4148
D014		1N4148
D015		1N4006
D016		1N4148
D017		1N4006
D018		1N4006
D019		1N4006
D020		1N4006
Z001		Z150V
Z002		Z150V
Z003		Z75V
Z004		Z75V
Z005		Z10V
Z006		Z10V
Z007		120V
B001		FED15 (of B80C1500)
B002		KBPC606 600V/6A
B003		B125/35A 350V/35A
B004		B125/35A 350V/35A
T001		BF759
T002		BF759
T003		2SK135
T004		2SK135
T005		2SK135
T006		2SK135
T007		2SK135
T008		2SK135
T009		2SJ50
T010		2SJ50
T011		2SJ50
T012		2SJ50
T013		2SJ50
T014		2SJ50
IC01		NE555
IC02		TL783C
V001		E88CC BUIS
V002		E88CC BUIS
V003		E88CC BUIS
V004		E88CC BUIS



## PJ14

Symbol No.	Part No.	Description
P001		Instel pot
P002		Instel pot
P003		Instel pot
P004		Instel pot
REL1		Relais 12V Omron
REL2		Relais 12V Omron
REL3		Relais 220V Omron
REL4		Relais 12V Omron
IC01		IC voet 8pins
V001		Buis voet Rond 9pins
V002		Buis voet Rond 9pins
V003		Buis voet Rond 9pins
V004		Buis voet Rond 9pins
REL1		Relais voet Rond 14pins
REL2		Relais voet Rond 14pins
REL3		Relais voet Rond 14pins
REL4		Relais voet Rond 14pins

