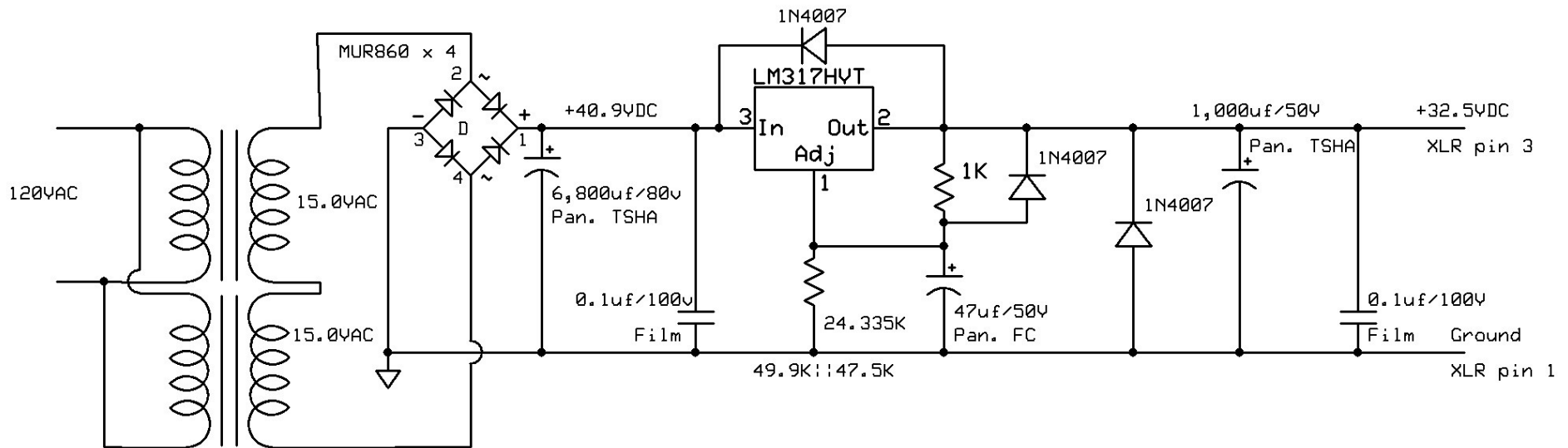
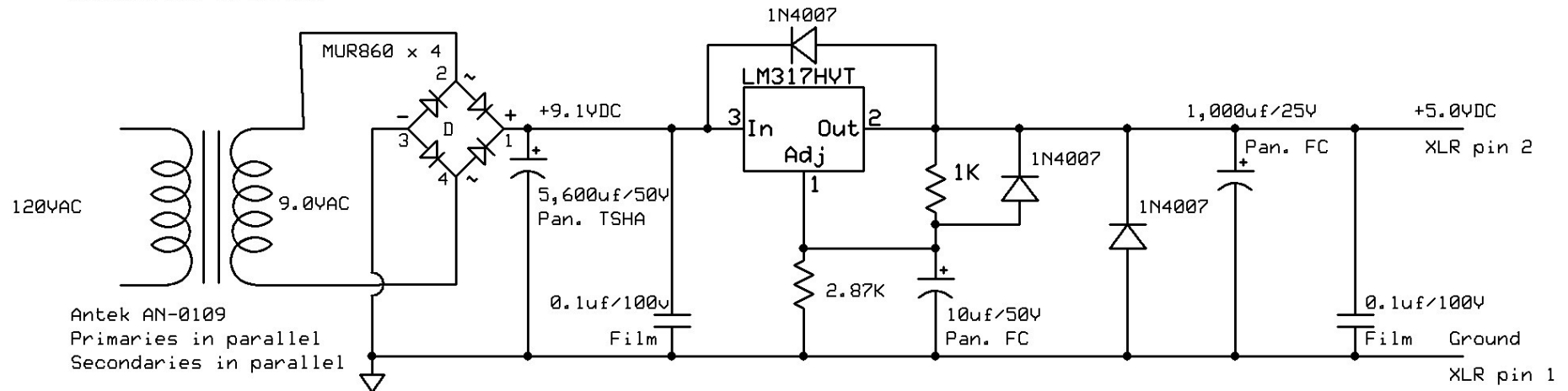


MPB's Technics SP-10 Mk2 Power Supply

9-29-2015



Antek AN-0515
Primaries in parallel
Secondaries in series



Antek AN-0109
Primaries in parallel
Secondaries in parallel

Note 1: All caps rated 105 degrees.

Note 2: 5V supply has smaller cap than 32.5V supply in regulator leg for faster charge-up (as in original Technics power supply).

Note 3: Supply draws approx 10 watts, t'able off, 11 watts t'able running.

Note 4: 140VDC supply not included, use LEDs for strobe instead.