

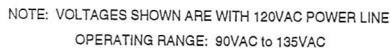
SP-10 PREAMPLIFIER

SCHEMATICS

REVISION C - JANUARY 6, 1986
REDRAWN APRIL 2003

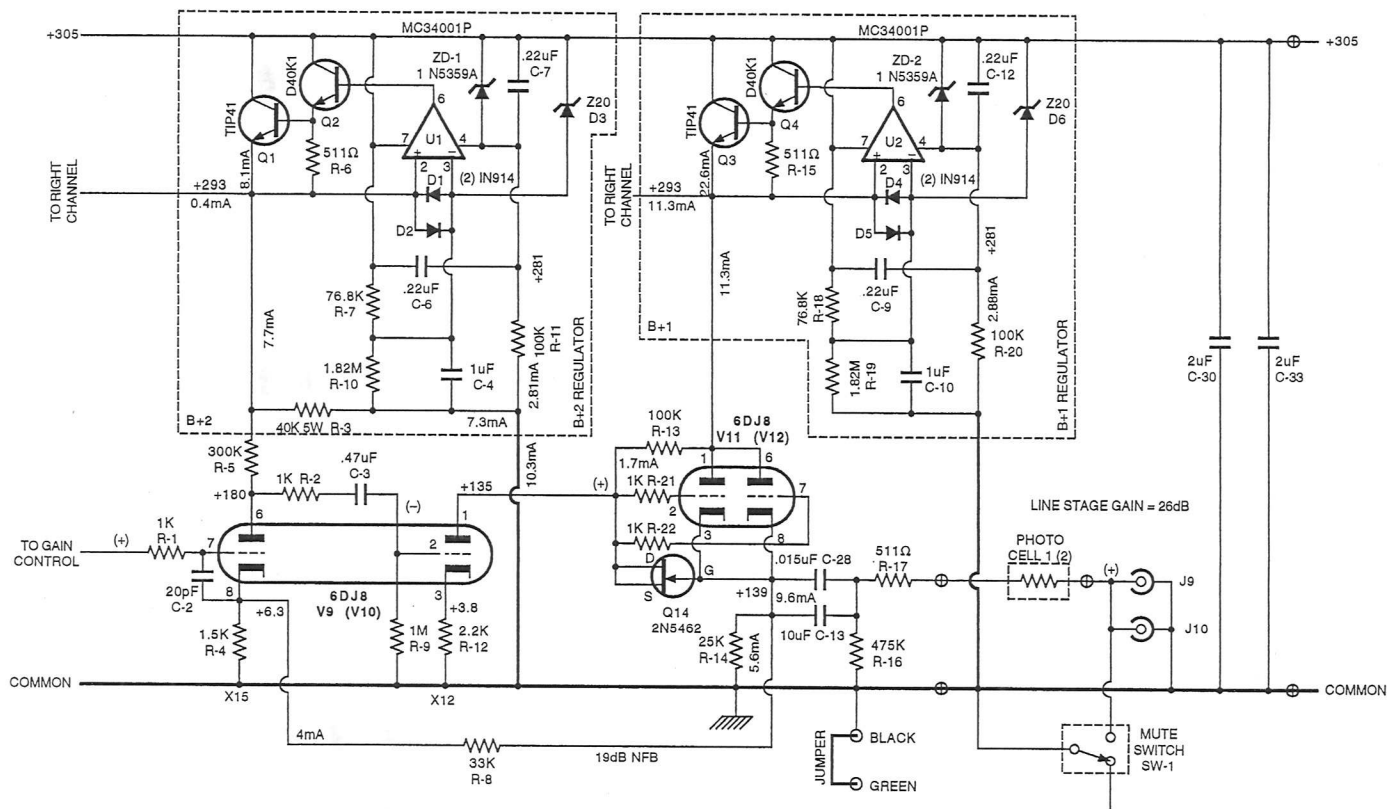
SEPTEMBER 27, 1997
APRIL 8, 2003

PRINTED WIRING BOARD #237
ARC PART NO. 16023710



This drawing contains circuitry that is **Patented, Patent Pending, and/or otherwise considered PROPRIETARY** by AUDIO RESEARCH CORPORATION, and is furnished on a **CONFIDENTIAL** basis for identification purposes only. **NO LICENSE FOR USE IS HEREBY GRANTED**

NOTE: T-1 CHANGES PART NUMBER
FOR DIFFERENT PRIMARY VOLTAGES.
VALUE OF F-1 FUSE CHANGES ALSO.

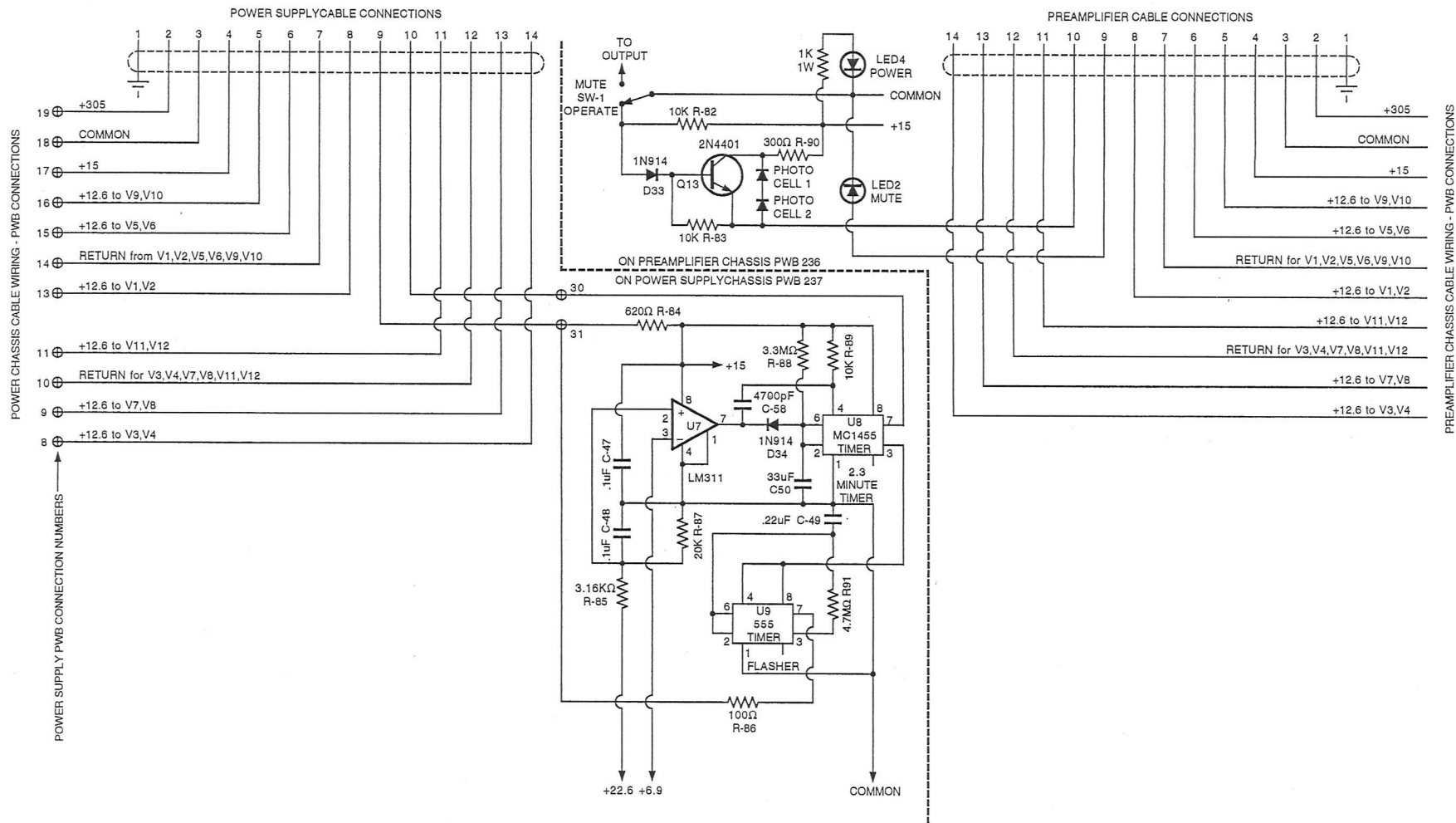


PART of PWB 236

PROPRIETARY NOTICE:
This drawing contains circuitry that is Patented,
Patent Pending, and/or otherwise considered
PROPRIETARY
by AUDIO RESEARCH CORPORATION,
and is furnished on a CONFIDENTIAL
basis for identification purposes only
NO LICENSE FOR USE IS HEREBY GRANTED.

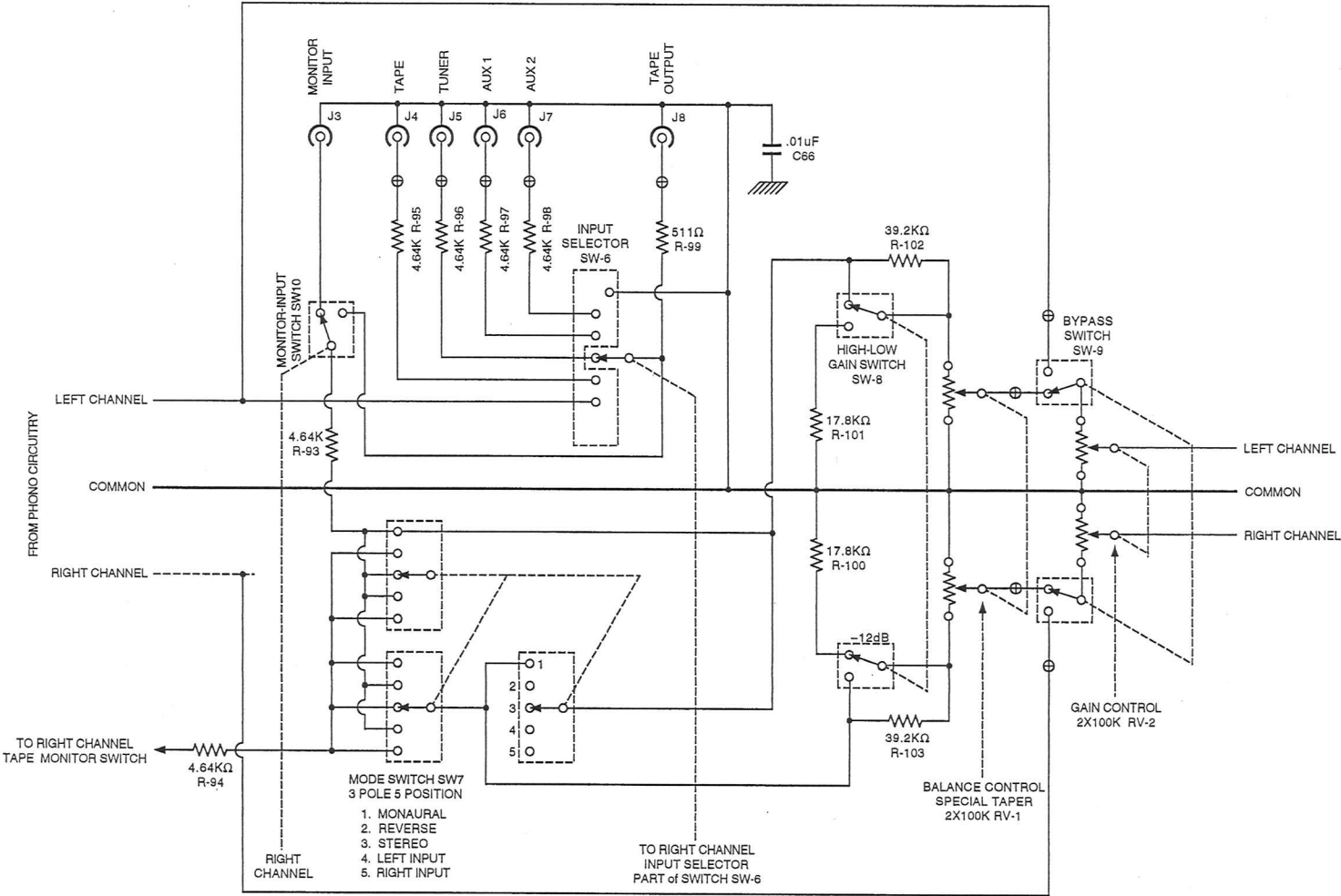


PROPRIETARY NOTICE:
This drawing contains circuitry that is **Patented, Patent Pending, and/or otherwise considered PROPRIETARY** by AUDIO RESEARCH CORPORATION, and is furnished on a **CONFIDENTIAL** basis for identification purposes only
NO LICENSE FOR USE IS HEREBY GRANTED



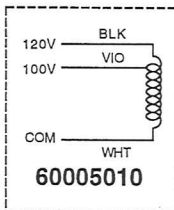
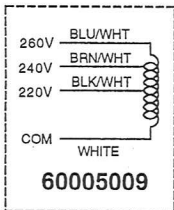
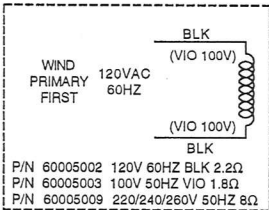
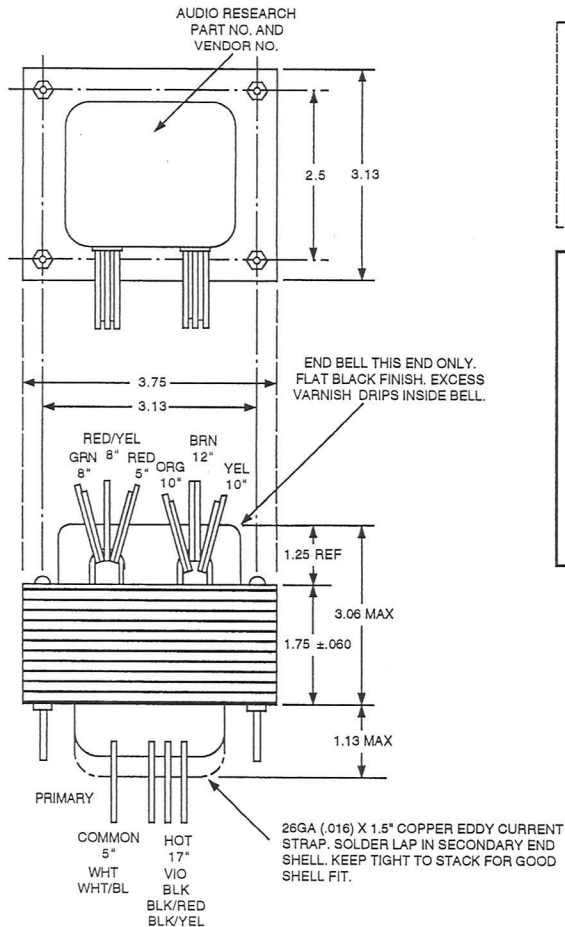
PROPRIETARY NOTICE

This drawing is considered **PROPRIETARY**
and is furnished on a **CONFIDENTIAL**
basis for use only as directed by
AUDIO RESEARCH CORPORATION
NO LICENSE FOR OTHER USE IS HEREBY GRANTED.



PROPRIETARY NOTICE
This drawing is considered **PROPRIETARY**
and is furnished on a **CONFIDENTIAL**
basis for use only as directed by
AUDIO RESEARCH CORPORATION
NO LICENSE FOR OTHER USE IS HEREBY GRANTED.

REDRAWN
4-15-03

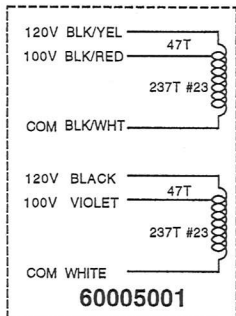


WIRING INSTRUCTIONS FOR UNIVERSAL "ALL VOLTAGE" TRANSFORMER P/N 60005001

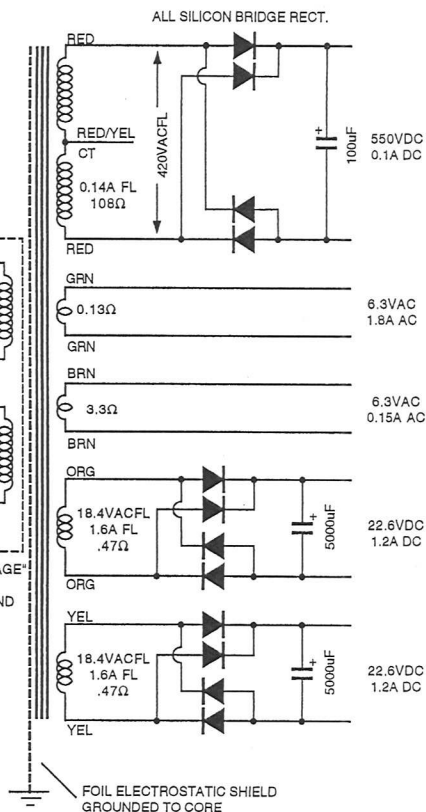
- 120V UNITS: CONNECT WHITE AND BLACK/WHITE TOGETHER TO CENTER BUSS BAR ON RECEPTACLES (AC CORD WHITE).
TIE OFF UNUSED VIOLET AND BLACK/RED WIRES.
- 220V UNITS: SPLICE AND SLEEVE BLACK AND BLACK/WHITE LEADS TOGETHER. CONNECT CONNECT WHITE TO CENTER BUSS BAR ON RECEPTACLES (AC CORD WHITE).
TIE OFF UNUSED BLACK/YELLOW AND VIOLET WIRES.
- 240V UNITS: SPLICE AND SLEEVE BLACK AND BLACK/WHITE LEADS TOGETHER. CONNECT WHITE TO CENTER BUSS BAR ON RECEPTACLES (AC CORD WHITE).
CONNECT BLACK/YELLOW TO AC SWITCH.
TIE OFF UNUSED BLACK/RED AND VIOLET WIRES.

WINDING SEQUENCE:

- PRIMARY (SEE DETAIL)
- FOIL SHIELD
- ORANGE 47T #21 19.86VACNL
- YELLOW 47T #21 19.86VACNL
- RED 1106T #30 467VACNL
C TAP AT 553T
- BROWN 32T #30 13.52VACNL
- GREEN 16T 2X#22 6.76VACNL



60005001 UNIVERSAL "ALL VOLTAGE" TRANSFORMER REPLACES P/N'S 60005002, 60005003, 60005009 AND 60005010



REV A ORIGINAL ISSUE
REV B 1.75 WAS 2.0, 2.5 WAS 2.25
NOTE CHANGES. 3.13 WAS 3.0, 3.75 WAS 3.34
REV C GREEN WAS 1.0A, REDRAW
ADD 5003, SHORTER LEADS
REV D 5-8-84 ADD 5010 SPECS.
REV E 1-25-85 ADD 5001, CHANGE
TURNS TO VENDOR DESIGN.
GREEN WAS 17T.

PROPRIETARY NOTICE:
THIS DRAWING IS CONSIDERED PROPRIETARY
AND IS FURNISHED FOR USE ONLY AS
DIRECTED BY AUDIO RESEARCH CORPORATION

NO LICENSE FOR USE IS HEREBY GRANTED.

- NOTES:
1. CORE 1.25 X 1.75 29GA M6 GRAIN ORIENTED LAMINATIONS, STACKED 2X2 12KG FLUX DENSITY AT 120V 60HZ.
 2. LAYER WOUND, IMPREGNATE WITH DOLPHUS BB353 HEAVY BLACK VARNISH, OR APPROVED EQUIVALENT, LESS END SHELLS. MUST NOT BUZZ.
 3. LEADS STRANDED UL/CSA FR-1 105°C PVC INSULATED. STRIPPED 1/4" ALL LEADS 20GA, LENGTHS AS SHOWN.
 4. ALL LOADS CONSTANT CURRENT. DESIGN FOR LOWEST HEAT RISE AT 12KG.
 5. END SHELL FLAT BLACK FINISH. INSTALL (2) SCREWS.
 6. SUPPLY SEPARATELY (2) # 8-32 X 2.5" R.H.S.M. PLATED, HEX NUTS, INSULATED WASHERS.
 7. HI POT TEST 1750V RMS ALL WINDINGS.

60005001 100/120/220/240V 50/60HZ PRI
60005002 120V 60HZ PRI
60005003 100V 50HZ PRI
60005009 220/240/260V 50HZ PRI
60005010 100/120V 50/60HZ PRI

AUDIO RESEARCH CORPORATION
3900 ANNAPOLIS LANE NORTH
PLYMOUTH, MN 55447-5447
TELEPHONE: (763) 577-9700
FACSIMILE: (763) 577-0323