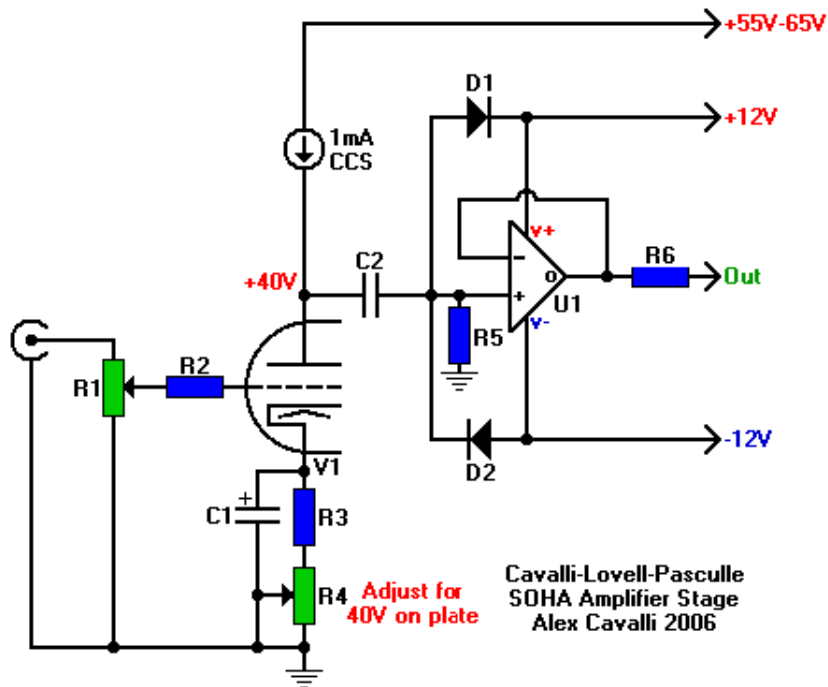


SOHA AMP.

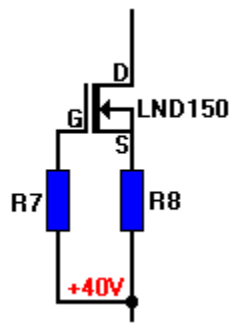


R1 (stock)	100k Log Pot	C1 2 total	1000u 10V Electrolytic 647-UPW1A102MPD
R2 2 total	300R 1/2W 300H-ND (DigiKey)	C2 2 total	100n 100V 505-M10.1/250/10
R3 2 total	560R 1/2W 560H-ND (DK)	CB 4 total	.068u 100V 1430-1683
R4 2 total	2k Trimpot 652-3319P-2-202	D1, D2 4 total	1N4148 or similar 78-1N4148
R5 2 total	1M 1/2W 1.0MH-ND (DK)	U1 1 total	OPA2134 or similar OPA2134PA-ND (DK)
R6 2 total	150R 1/2W 150H-ND (DK)	BOARD 1 total	589-7100-45
JACK 1 total	3.5mm 161-3502	IC SOCKET 1 total	575-144308

Parts not marked DK (DigiKey) are Mouser part numbers.

SOHA AMP.

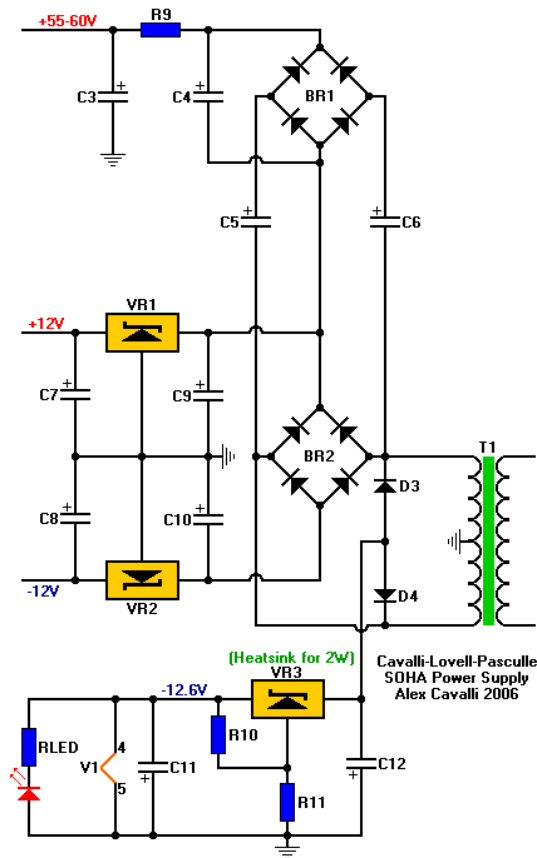
LND150 MOSFET
2 total 689-LND150N3-G



R7 1k 1/2W
2 total 1.0KH-ND (DK)

R8 360R 1/2W
2 total 360H-ND (DK)

SOHA AMP.



R9 1 total	2k2 1/2W 2.2KH-ND (DK)	C9, C10, C12 3 total	470u 35V 647-UPW1V471MPD
R10 1 total	1k3 1/2W 1% METAL FILM 271-1.3K-RC	DIODES (10 total)	1A 600v ULTRAFast 625-UF4005-E3
R11 1 total	11k 1/2W 1% METAL FILM 271-11K-RC	VR1 1 total	12V Fixed Regulator 7812 512-MC7812ECT
R12, R13, R14 3 total	560 1W 294-560-RC	VR2 1 total	-12V Fixed Regulator 7912 512-MC7912CT
R15 1 total	120K 1W 294-120K-RC	VR3 (stock)	Adj. Negative Regulator LM337
C3-C6 4 total	100u 100V 647-UPW2A101MHD	T1	30VCT 500mA min. Transformer (Triad toroid from Mouser?)
C7, C8, C11 3 total	47u 25V 647-UPW1E470MDD	HSK 1 total	HEATSINK 567-273-4B