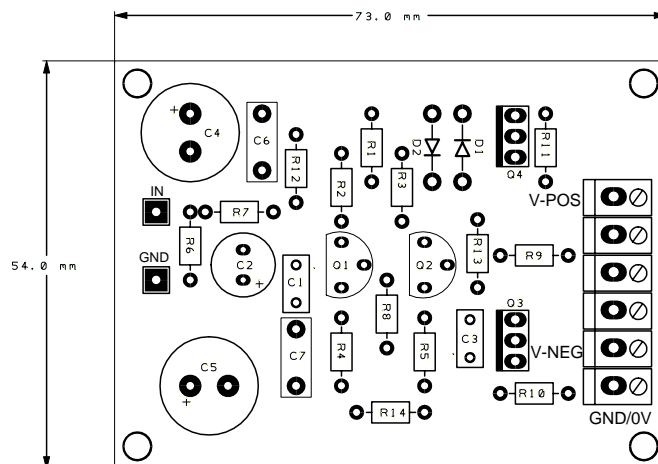
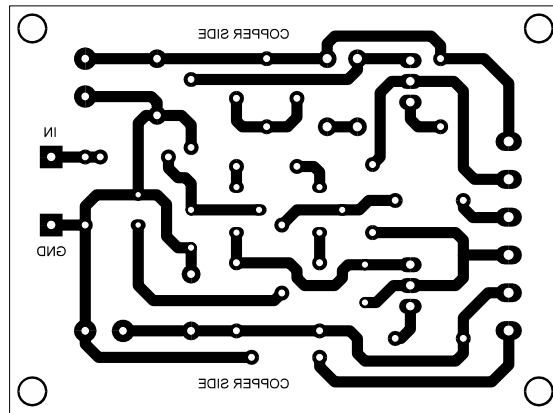
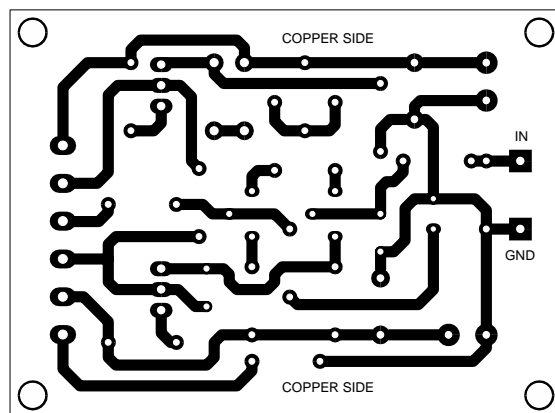


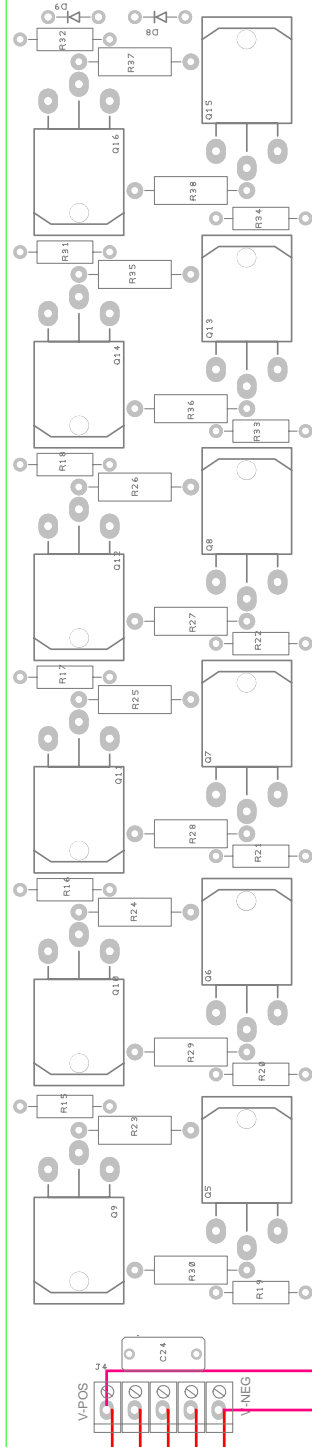
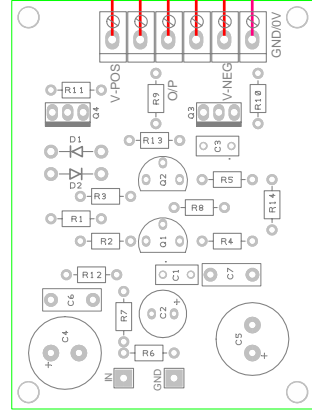
REF	NAME	DESCRIPTION	QNTY
C6 C7	100n	Capaci tor Cerm 100V	2
C1	100p		1
R14	10E	Resi stor	1
R12	10K	Resi stor	1
R10	120E	Resi stor	1
R7	1K0	Resi stor	1
D1 D2	1N4007		2
R2 R3	220E	Resi stor	2
R9	22K	Resi stor	1
R6	27K	Resi stor	1
R13	2E2	Resi stor	1
R4 R5	3K9	Resi stor	2
C4 C5	470u	Capaci tor Electr Radial 85V	2
C2	470u	Capaci tor Electr Radial 16V	1
R8	560E	Resi stor	1
R1	56K	Resi stor	1
R11	68E	Resi stor	1
C3	68p	Cerami c 100V	1
J3	8191-6		1
Q3	MJE340		1
Q4	MJE350		1
Q1 Q2	MPSA92		2

Note: All Resistors 1/4 watt 5 %



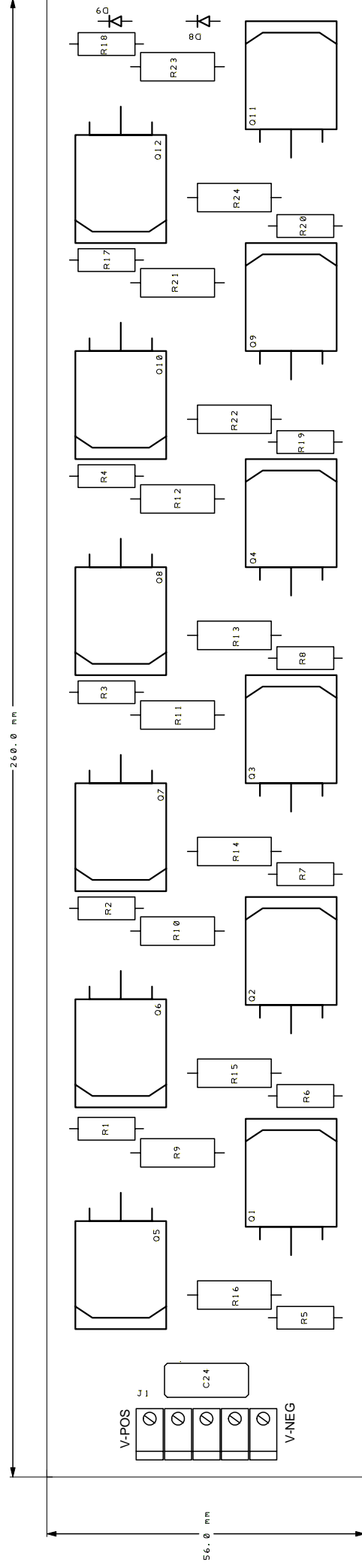






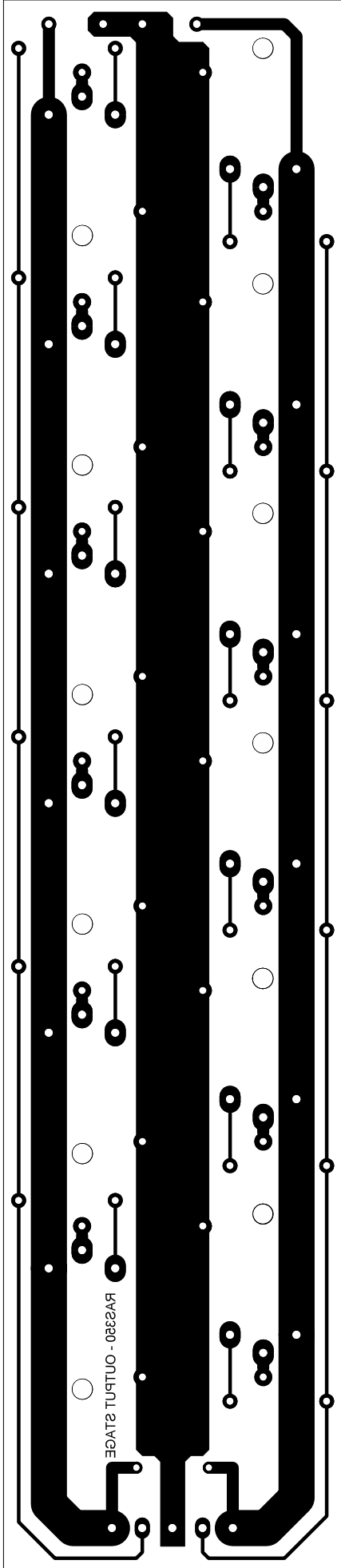
RAS350 OUTPUT STAGE

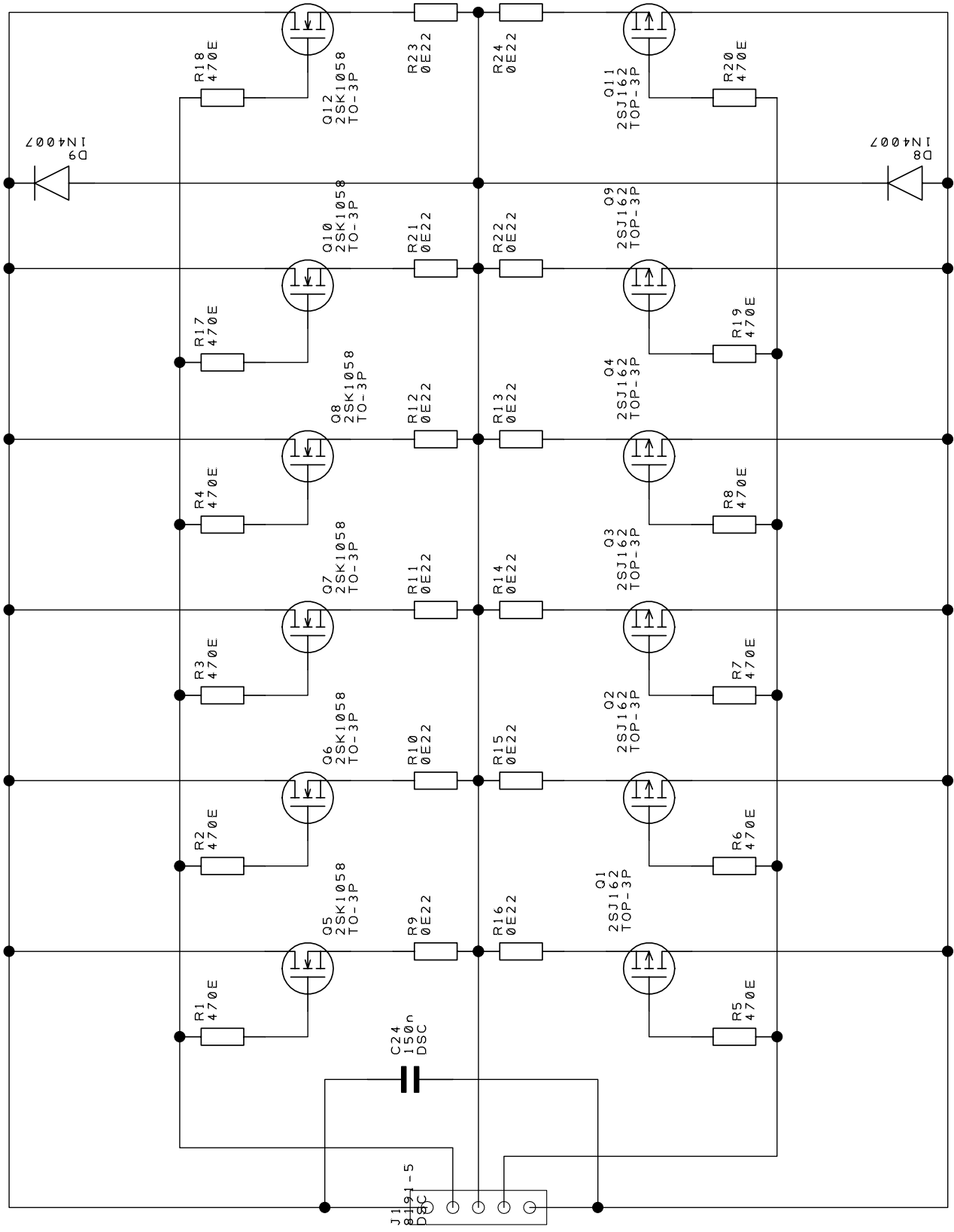
+70V
0V
-70V



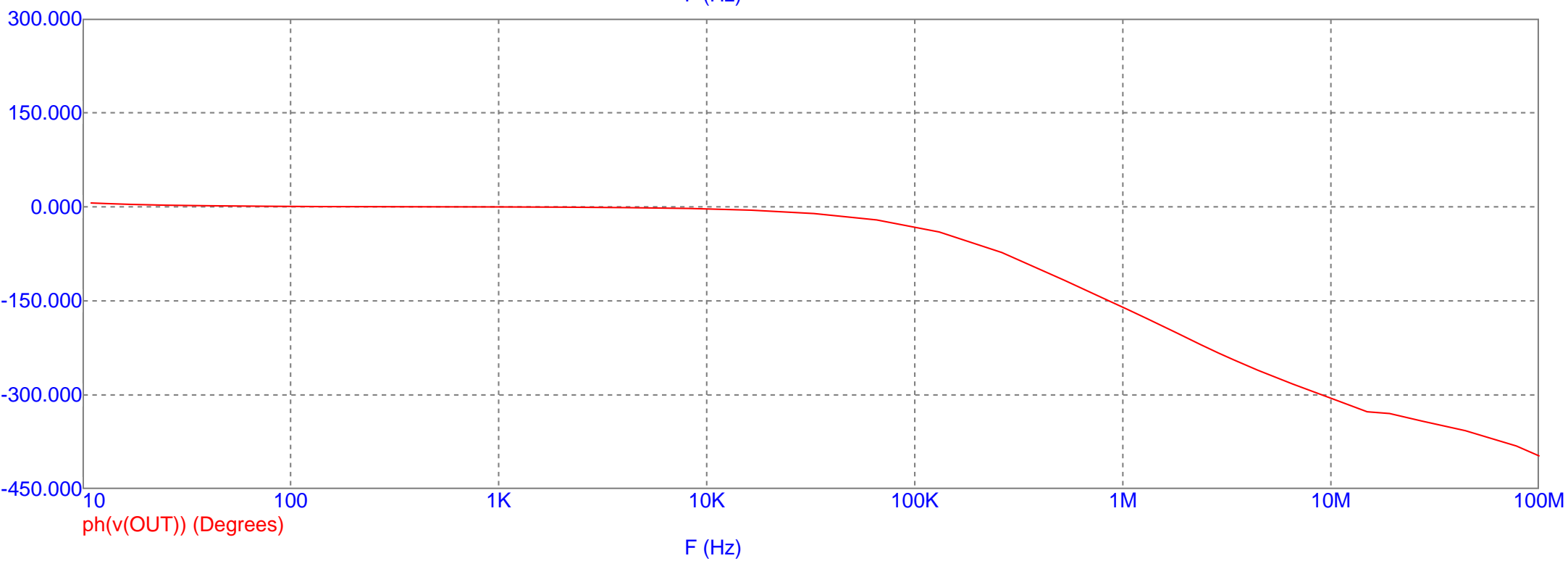
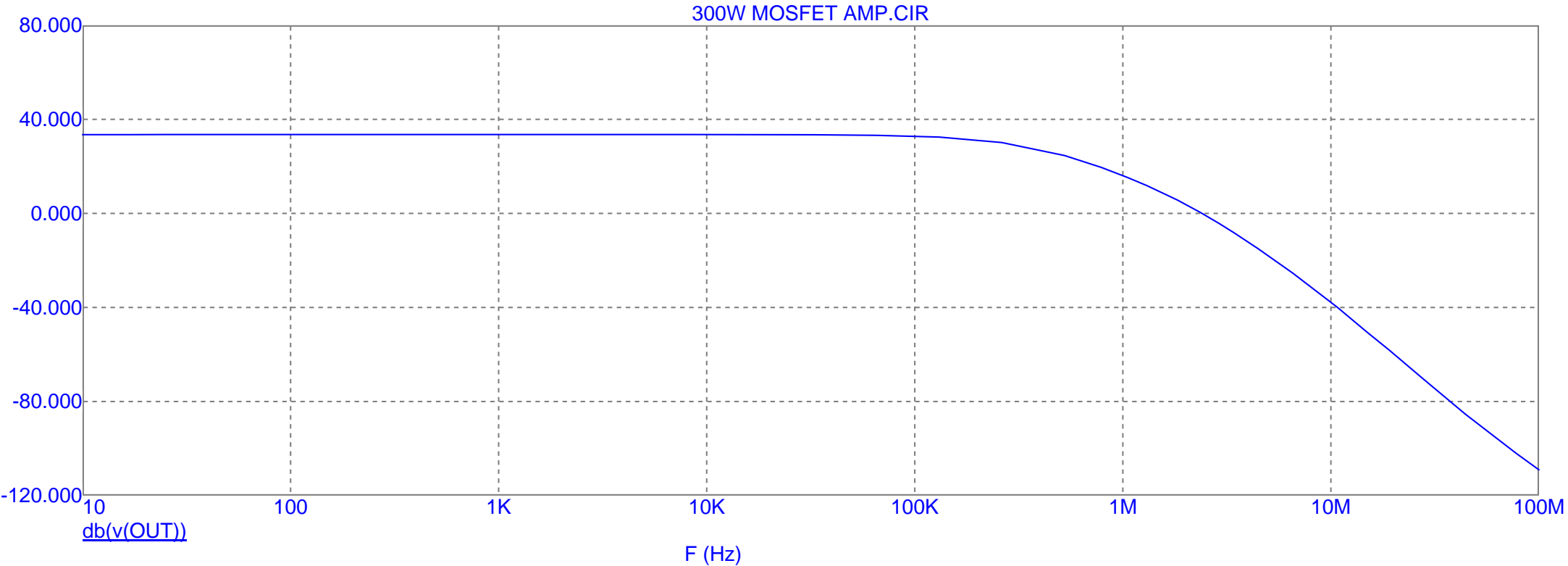
RAS400 OUTPUT STAGE

Ref	Qty	Name	Power amp 0-P. I sp Package
R9	12	0E22	2 Watt
R10			
R11			
R12			
R13			
R14			
R15			
R16			
R21			
R22			
R23			
R24			
REF1	1	0V	
C24	1	150n	DSC
D8	2	1N4007	DSC
D9			
Q1	6	2SJ162	TOP-3P
Q2			
Q3			
Q4			
Q9			
Q11			
Q5	6	2SK1058	TO-3P
Q6			
Q7			
Q8			
Q10			
Q12			
R1	12	470E	500mW
R2			
R3			
R4			
R5			
R6			
R7			
R8			
R17			
R18			
R19			
R20			
J1	1	8191-5	DSC

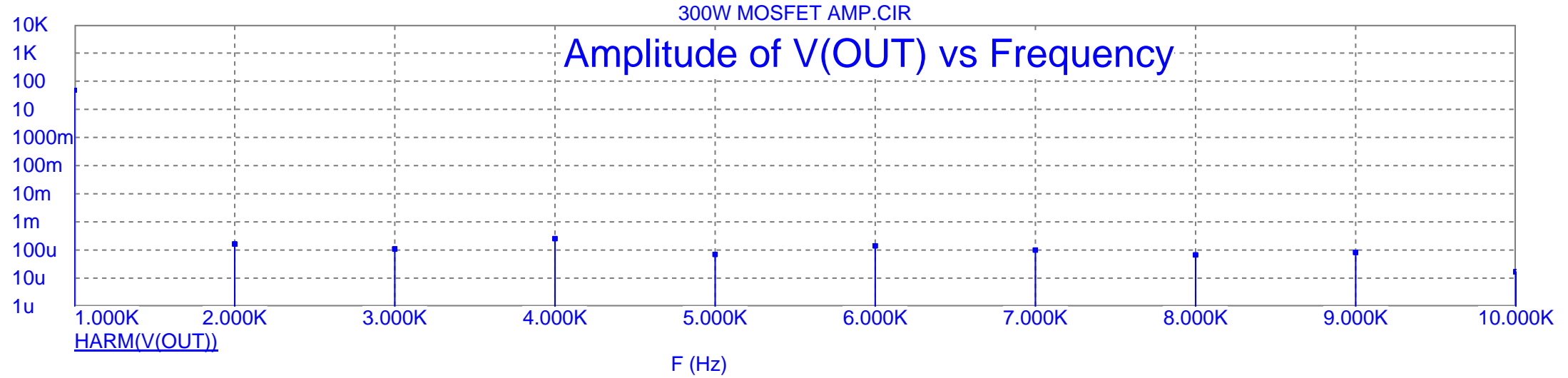




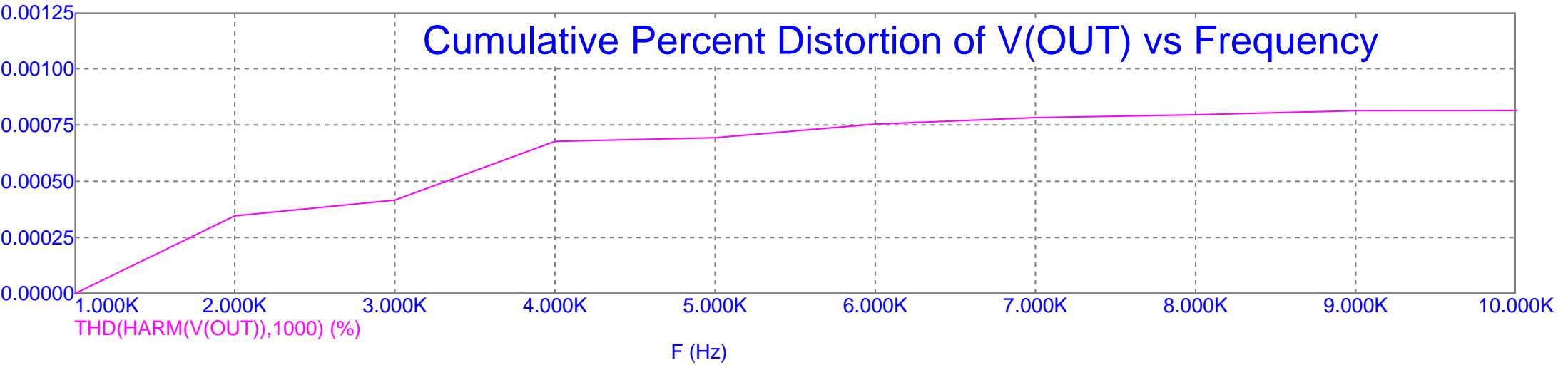
300W MOSFET AMP.CIR



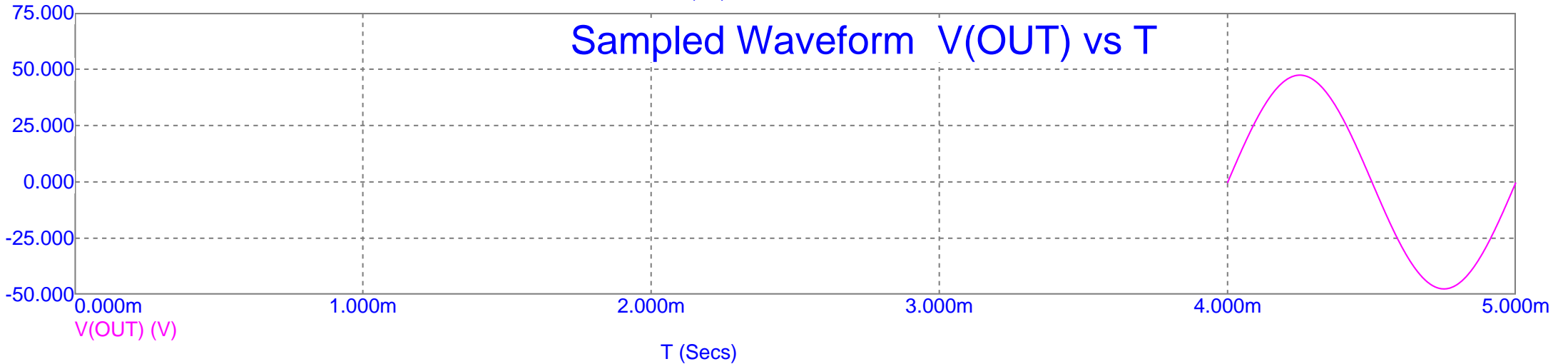
Amplitude of V(OUT) vs Frequency



Cumulative Percent Distortion of V(OUT) vs Frequency



Sampled Waveform V(OUT) vs T



300W MOSFET AMP.CIR

