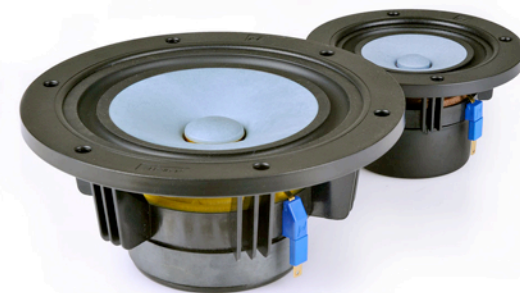
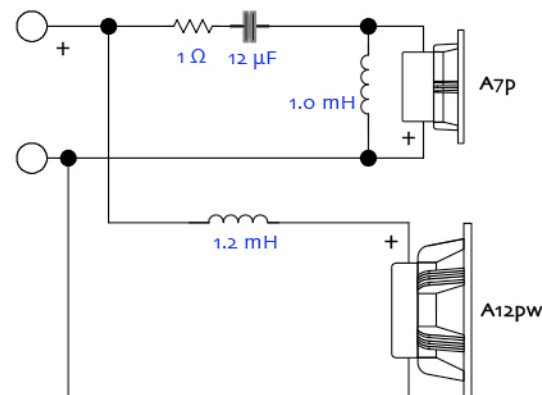


## Simple 2-way | Alpair 7p + 12pw

designed by S Lindgren drawn by dld  
04-september-2014  
©2010-2014 Markaudio All rights reserved  
NOT for commercial use without prior  
written approval from Markimage Limited



### Notes:

- 0/ drawing uses 18 mm. Quality multi-ply recommended
- 1/ line all internal walls with suitable damping material
- 2/ use A7.x, A12.x drawings for driver cutoit dimensions
- 3/ bracing is optional, do account for bracing volume if used.
- 4/ be prepared to modify the filter circuit to suit personal taste and room environments Use better quality filter components, apply low DCR inductors
- 5/ Pre-thread pilot holes before mounting the drivers. Don't use power-screwdrivers to install the drivers, hand tool only, gentle tighten only.