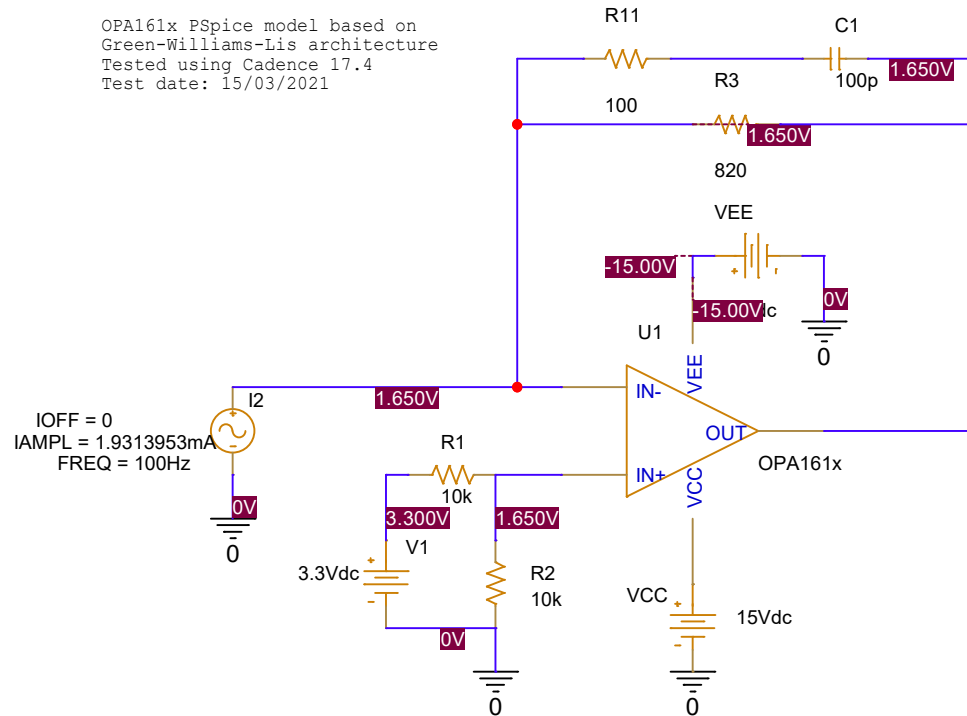
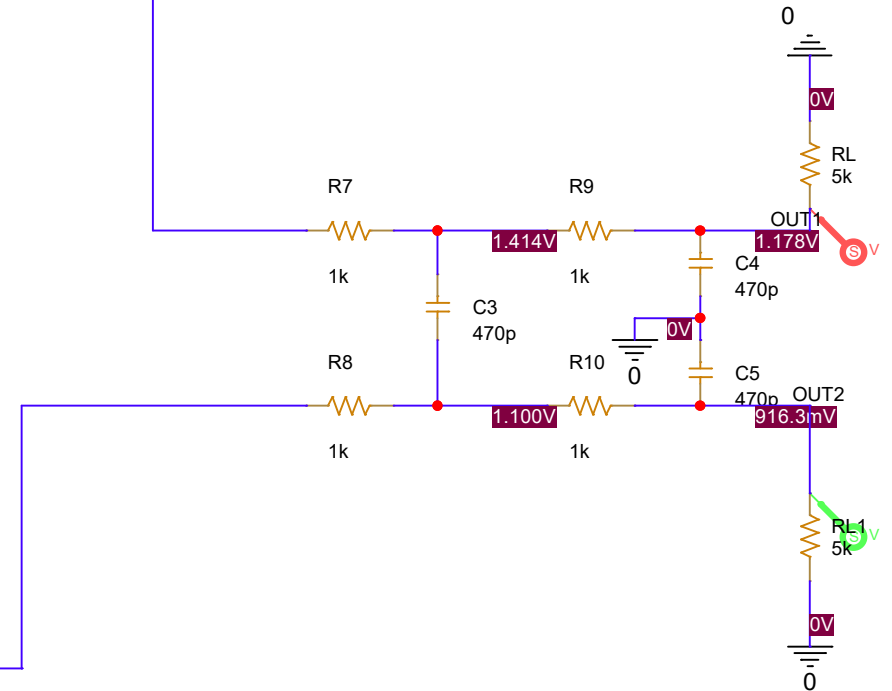
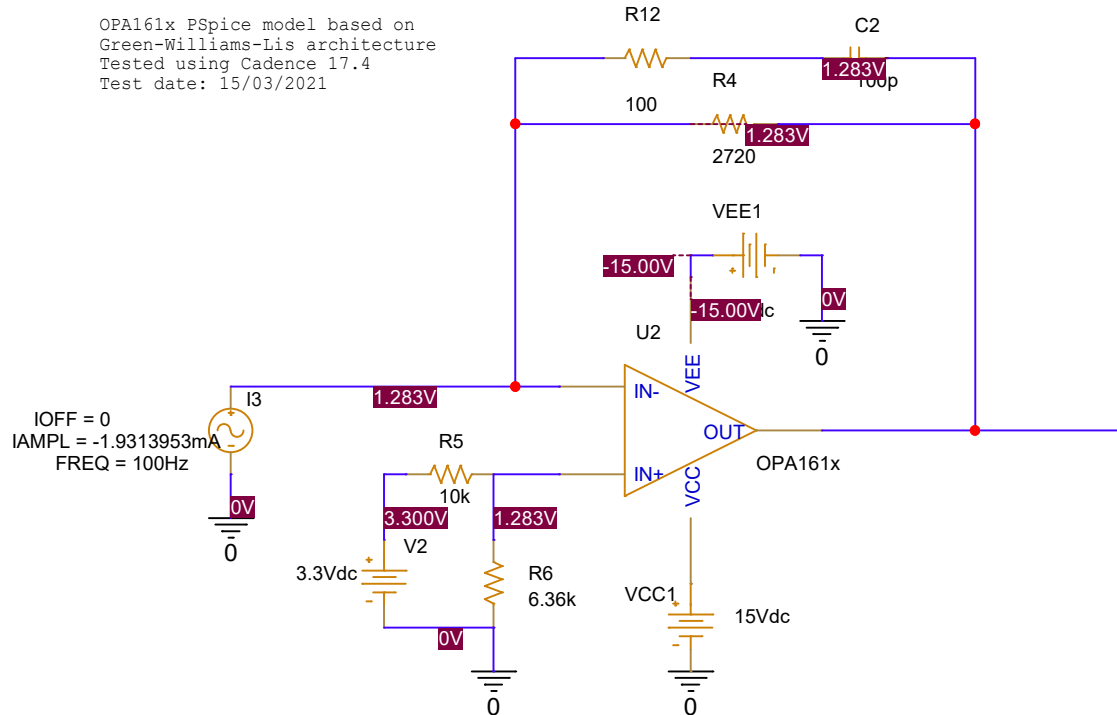


OPA161x PSpice model based on
Green-Williams-Lis architecture
Tested using Cadence 17.4
Test date: 15/03/2021



OPA161x PSpice model based on
Green-Williams-Lis architecture
Tested using Cadence 17.4
Test date: 15/03/2021



| | | | |
|--|--|-------|-------------------|
| | | | |
| Title OPA161x SoundPlus™ High-Performance, Bipolar-Input Audio Operational Amplifiers | | | |
| Size A | Document Number Datasheet: SBOS450C EVM: N/A | | Rev 1.3 |
| Date: | Monday, June 14, 2021 | Sheet | 1 of 1 |