

ALIGNMENT OF THE CIRCUIT

■ FREQUENCY MULTIPLE ADJUSTMENT

(Refer to Figures 7-1 and 8-3)

1. Connect the oscilloscope to the pins 25 (GND) and 27 (+).
2. Adjust the semi-variable resistor (VR1) so that good waveform indicated in Figure 7-1.

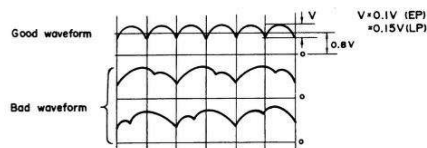


Figure 7-1

■ DRIVE CIRCUIT ADJUSTMENT

1) HALL DEVICE (Refer to Figures 7-2 and 8-2)

1. Connect the oscilloscope to the pins 25 (GND) and 28 (+).
2. Adjust the semi-variable resistor (VR1104) so that good waveform indicated in Figure 7-2.

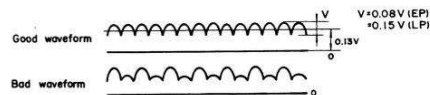


Figure 7-2

2) 4-COIL CURRENT (Refer to Figures 7-3 and 8-2)

1. Connect the oscilloscope to the pins 25 (GND) and 28 (+).
2. Adjust the semi-variable resistors (VR6 and 7) so that good waveform indicated in Figure 7-3.

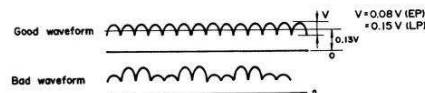


Figure 7-3

■ ADJUSTMENT OF THE MOTOR'S ROTATION

(Refer to Figures 8-1 and 8-2)

The rotational speed of turntable minutely varies according to the hour during a day, therefore, take the following procedures to obtain an exact speed.

1. Turn the speed fine adjustment knob clockwise or anti-clockwise to adjust so that the stripe pattern of a stroboscope provided at the platter looks like stationary. When the stripe pattern is moving in the turning direction of platter, this shows that the rotational speed of turntable is faster than as specified. In this case, adjust it by turning the speed fine adjustment knob toward 's'. Or, when the stripe pattern is moving against the turning direction of platter this shows that the turntable rotates slower than as specified. In such a case, adjust it by turning the speed fine adjustment knob toward 'f'.
2. When the servo-control P.W. board or other electrical parts are replaced for repairing, adjust the turntable speed in the following manner.
 - 1) Set the speed fine adjustment knobs (VR4, VR5) to the central position.
 - 2) Adjust the semi-variable resistors (VR2, VR3) so that the stripe pattern of a stroboscope provided at the platter looks like stationary.
 - VR2 For 33-1/3 r.p.m. Adjust
 - VR3 For 45 r.p.m. Adjust

■ STROBOSCOPE FREQUENCY ADJUSTMENT

(Refer to Figure 8-2)

1. Connect the frequency counter to the base of transistor (Q101) and ground.
2. Adjust the semi-variable resistor (VR101) so that the frequency counter indicate 120 Hz.

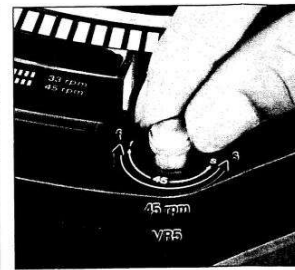
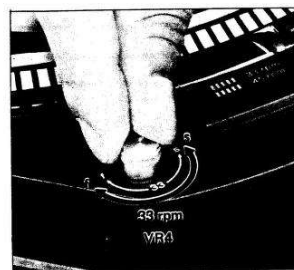
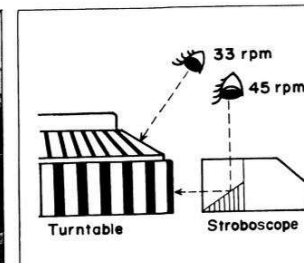


Figure 8-1



- VR1 : Frequency Multiple Circuit Adjust
- VR2 : Turntable Speed Adjust (33-1/3rpm)
- VR3 : Turntable Speed Adjust (45rpm)
- VR4 : Turntable Speed Fine Adjust (33-1/3rpm)
- VR5 : Turntable Speed Fine Adjust (45rpm)
- VR6 } : 4 Coil Current Adjust
- VR7 }
- VR8 : Hall Device Adjust
- VR101 : Stroboscope Frequency Adjust

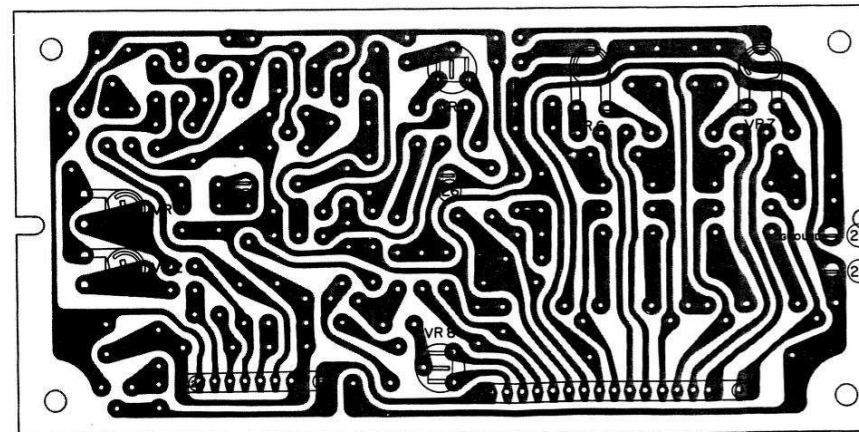
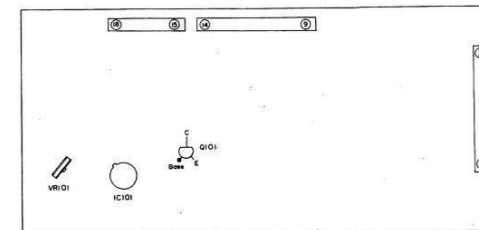


Figure 8-2 ALIGNMENT POINT