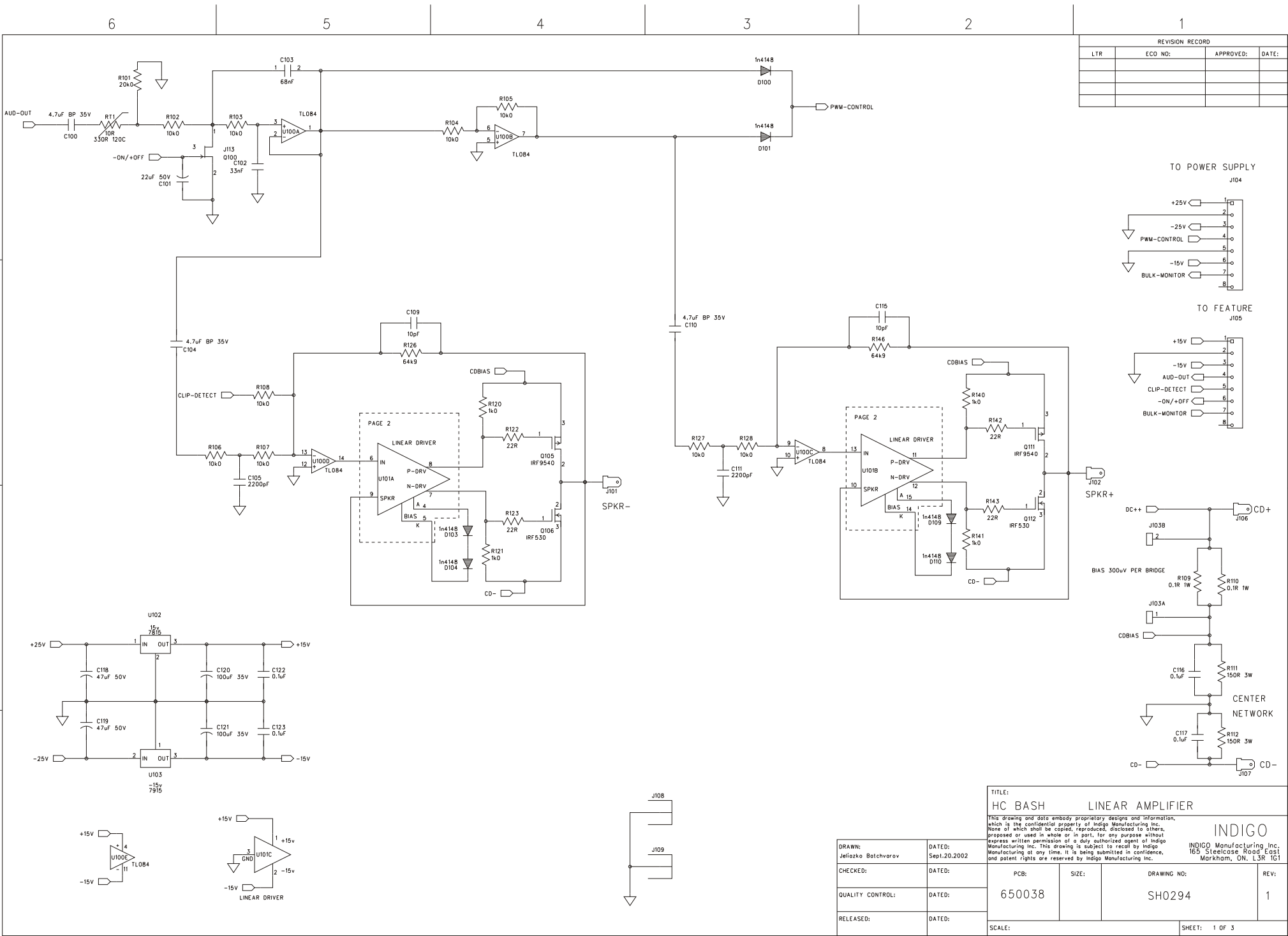


D

C

B

A



D

C

B

A

6

5

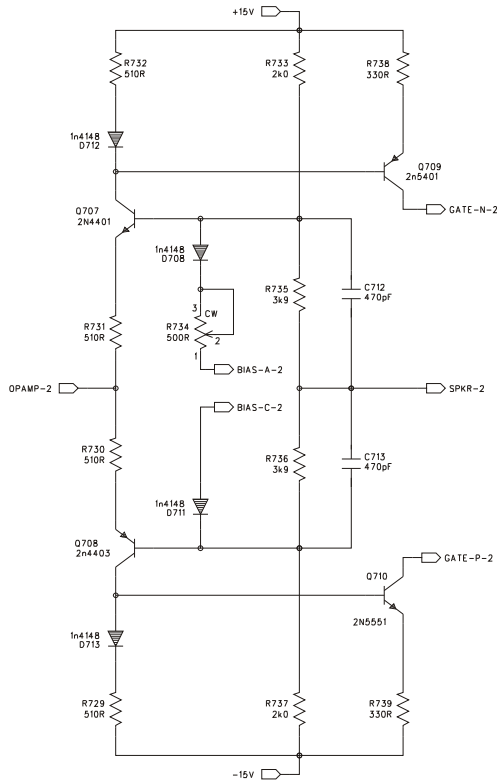
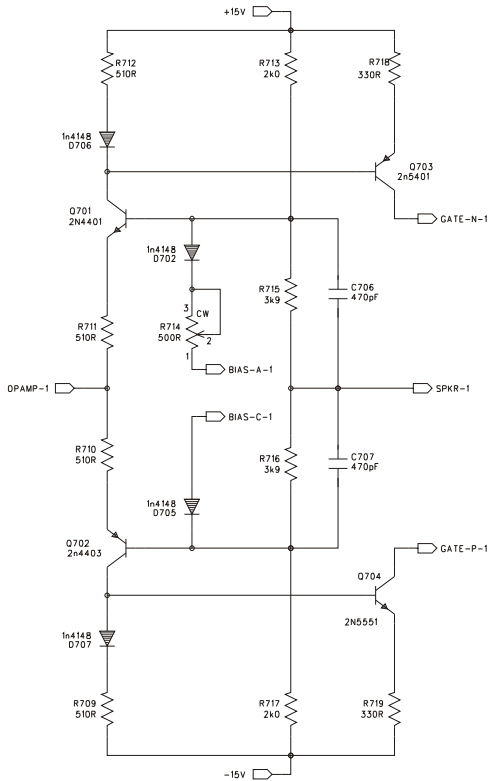
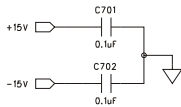
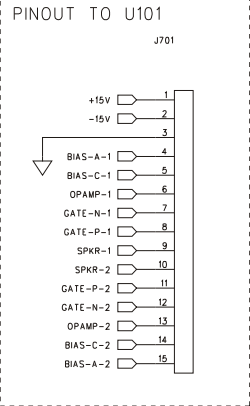
4

3

2

1

REVISION RECORD			
LTR	ECD NO:	APPROVED:	DATE:



TITLE:				
HC BASH 200W LIN1010				
<p>This drawing and data embody proprietary designs and information, which is the confidential property of Indigo Manufacturing Inc. None of which shall be copied, reproduced, disclosed to others, proposed or used in whole or in part, for any purpose without express written permission of a duly authorized agent of Indigo Manufacturing Inc. This drawing is subject to recall by Indigo Manufacturing at any time, it is being submitted in confidence, and patent rights are reserved by Indigo Manufacturing Inc.</p>				
INDIGO INDIGO Manufacturing Inc. 165 Steelcase Road East Markham, ON, L3R 1G1				
PCB:		SIZE:		DRAWING NO:
650038		SH0294		REV: 1
SCALE:				SHEET: 2 OF 3

6				5				4				3				2				1			
Rev.	Date	ECR No.	APPROVED	DESCRIPTION				Rev.	Date	ECR No.	APPROVED	DESCRIPTION											
A	Sept.20.2002		Jeliazko	modification from SH0262_0 - Solen-Key filter																			
B	Oct.24.2002		Jeliazko	C102,103,R101,C100																			
1	Feb.24.2003		Jeliazko	Q105,111 - IRF9540																			