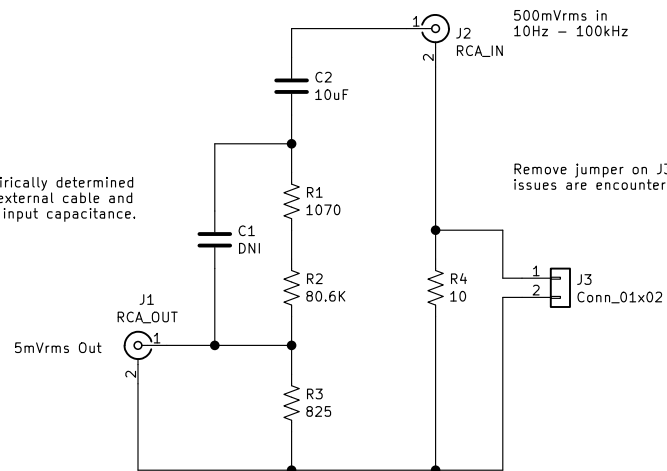


C1 value must be empirically determined  
if required based on external cable and  
strain gauge pre-amp input capacitance.



R1 - R3 Panasonic 1206 0.1% Thin Film Resistor  
C1 - 1206 NPO/COG Type as needed  
C2 - 10uF/16V Non Polar EL CAP (Nichicon Muse) pin spacing 2mm

Copyright 2020 by Kevin Kennedy

KTA / Kevin Kennedy

Sheet: /  
File: SG Test Jig.sch

**Title: Strain Gauge Pre-Amp Test Jig**

Size: A Date: 2020-05-25

KiCad E.D.A. kicad (5.1.4)-1

Rev: 0

Id: 1/1