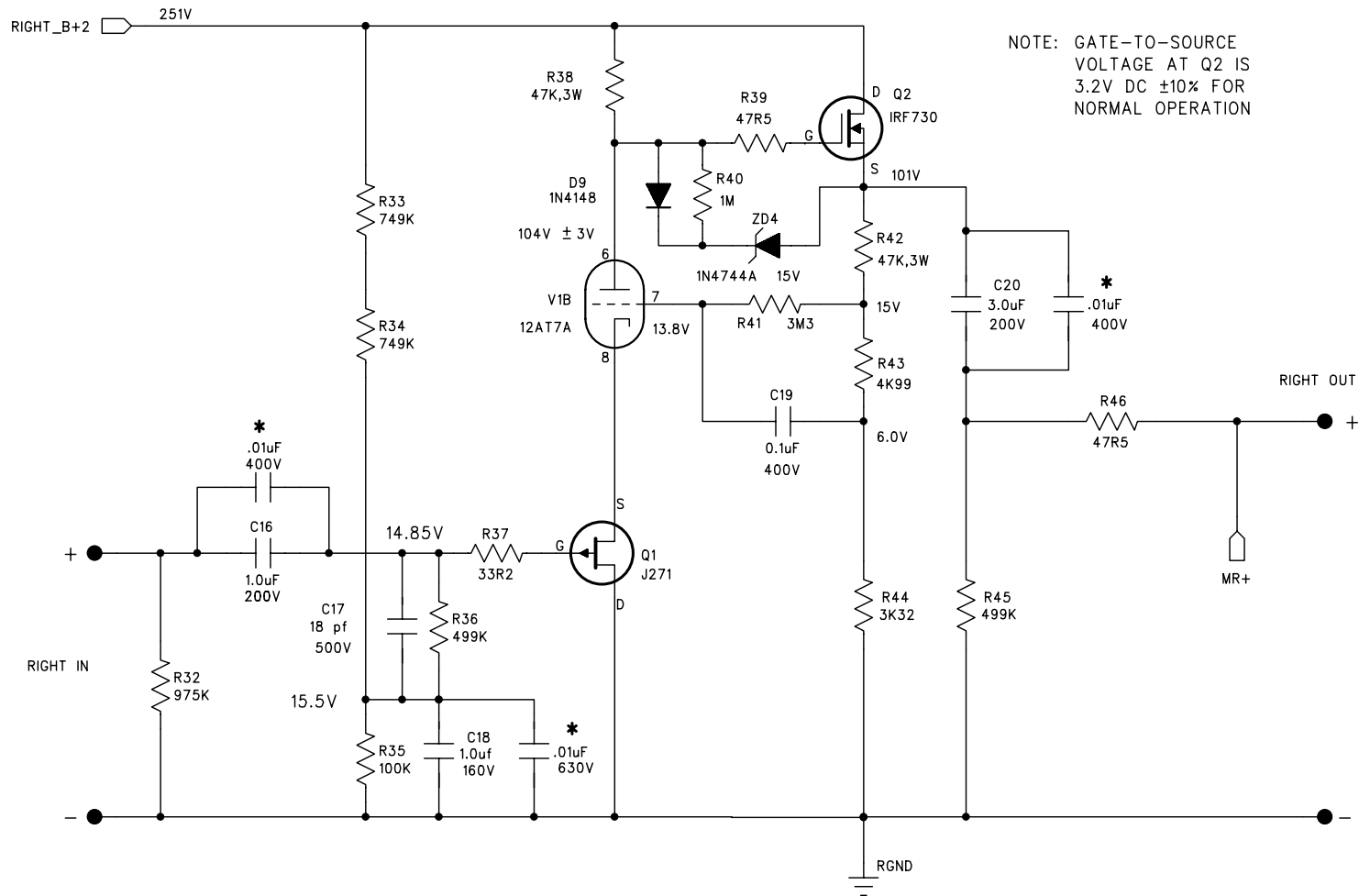


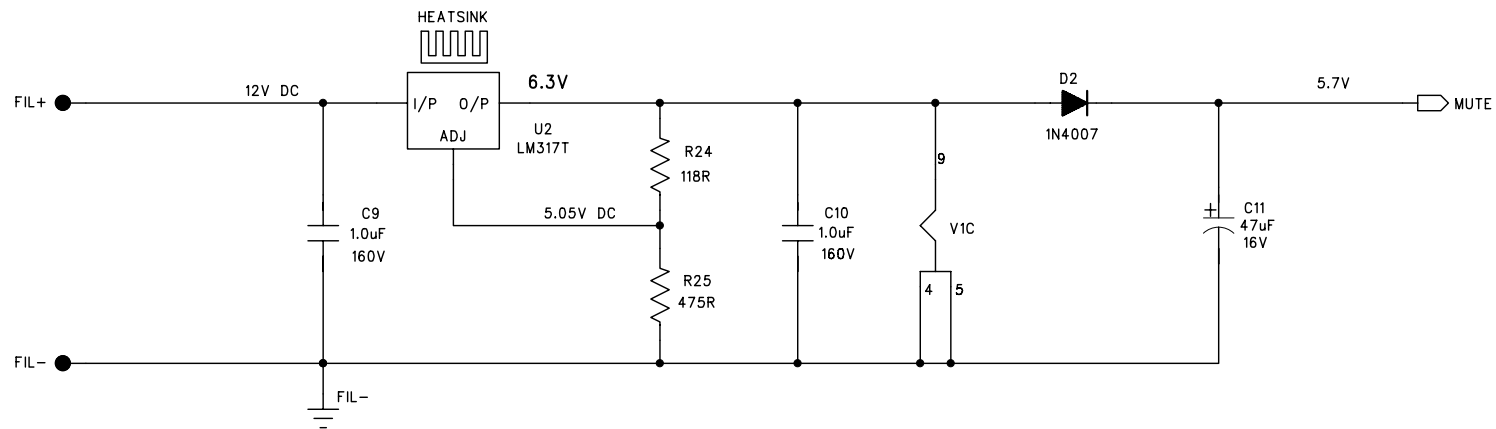
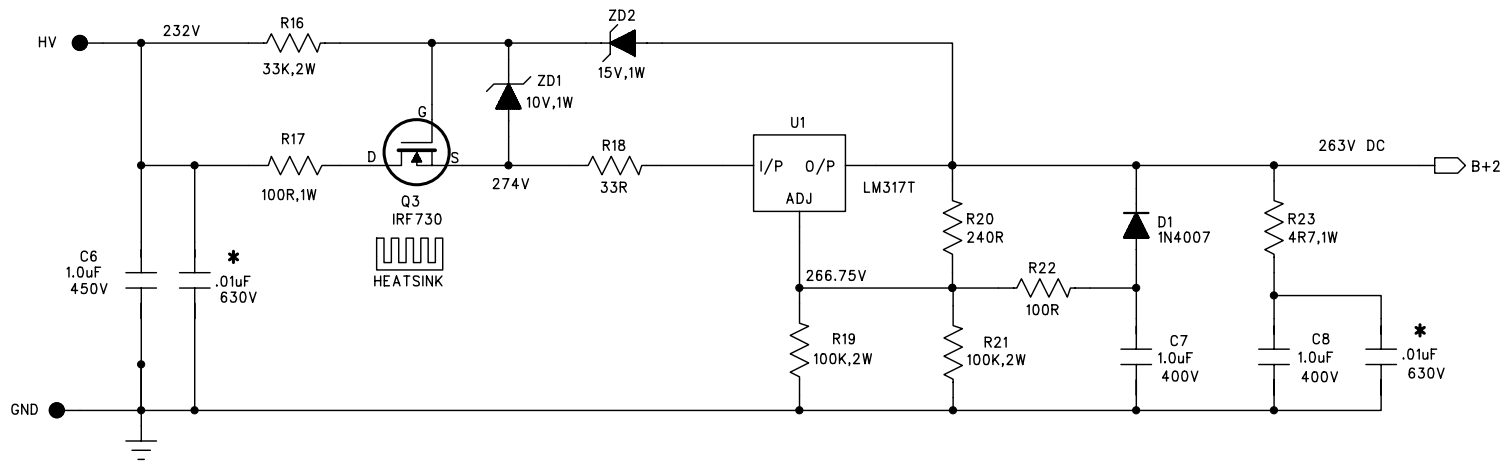
RIGHT CHANNEL LINE STAGE



* Used in SIGNATURE version only

SONIC FRONTIERS INC.			
RIGHT CHANNEL AUDIO SECTION			
SIZE	DOCUMENT NUMBER		REV
A	SFL-1		3
DATE: JAN 27,1994		SHEET 5 of 6	

POWER SUPPLY REGULATORS

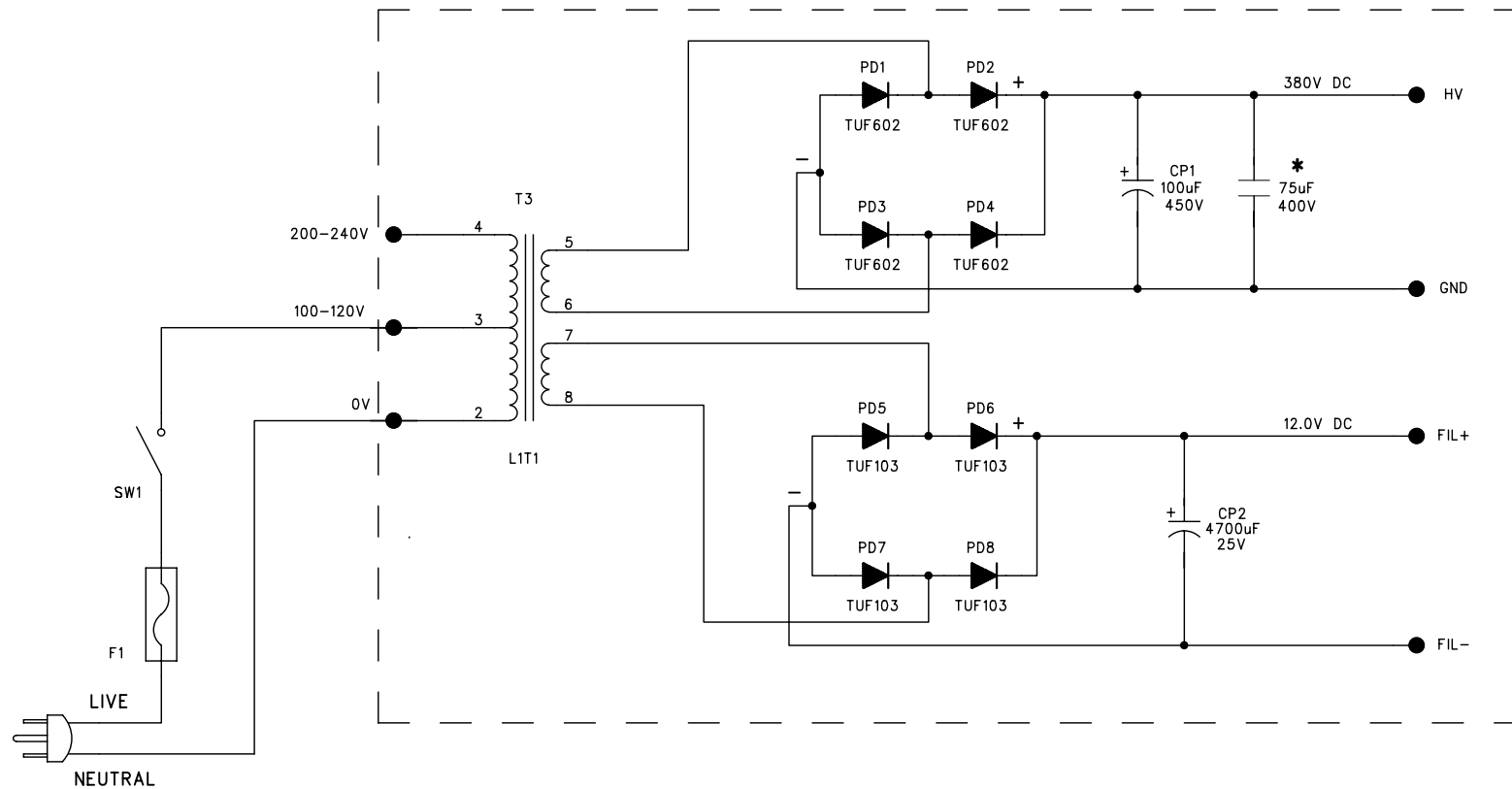


* Used in SIGNATURE version only

NOTE: C7, C8 ARE MIT 1.0uF 400V PPMFX IN SIGNATURE VERSION ONLY

SONIC FRONTIERS INC.		
POWER SUPPLY & H.V. FILAMENT REGULATORS		
SIZE A	DOCUMENT NUMBER SFL-1	REV 2
DATE: JAN 27, 1994		SHEET 2 of 6

POWER SUPPLY BOARD

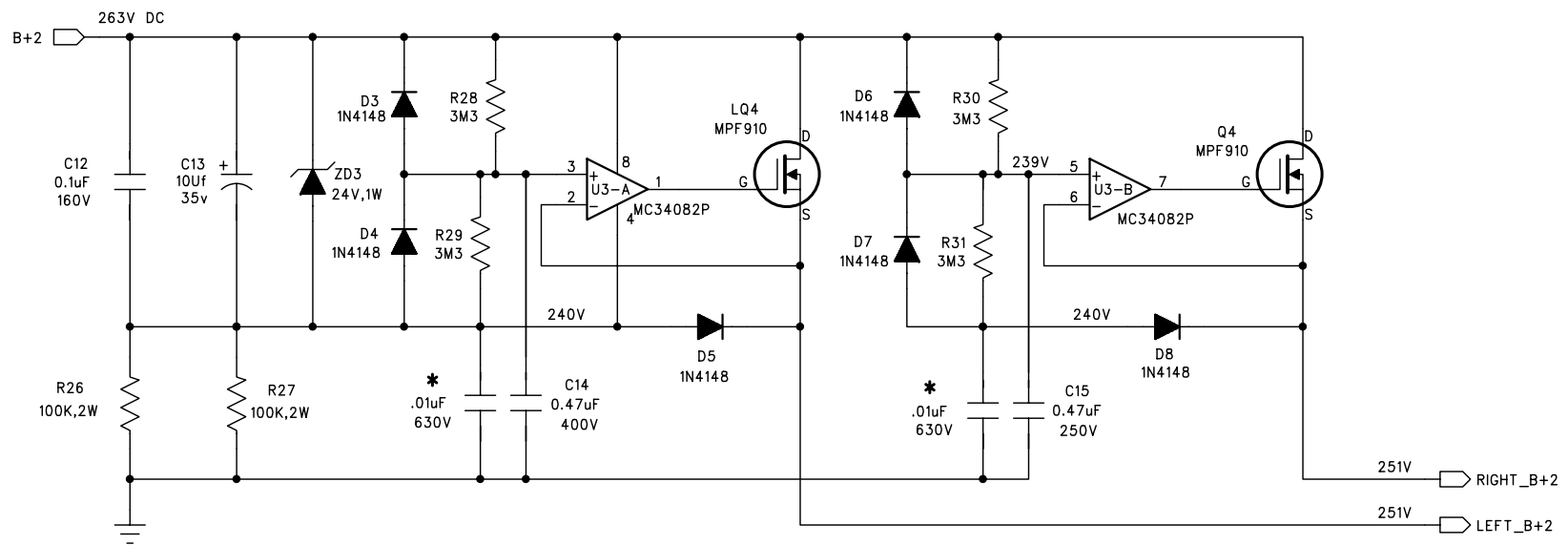


NOTE: FUSE, F1 IS A 1/2 AMP. FAST BLOW FOR 100-120V AC. (SHOWN),
1/4 AMP. FAST BLOW FOR 200-240V AC.

* Used in SIGNATURE version only

SONIC FRONTIERS INC.			
POWER SUPPLY BOARD			
SIZE A	DOCUMENT NUMBER SFL-1		REV 3
DATE: JAN 27, 1994		SHEET 1 of 6	

SLAVE REGULATORS



* Used in SIGNATURE version only

SONIC FRONTIERS INC.			
SLAVE REGULATORS			
SIZE A	DOCUMENT NUMBER SFL-1		REV 3
DATE: JAN 27, 1994		SHEET 3 of 6	