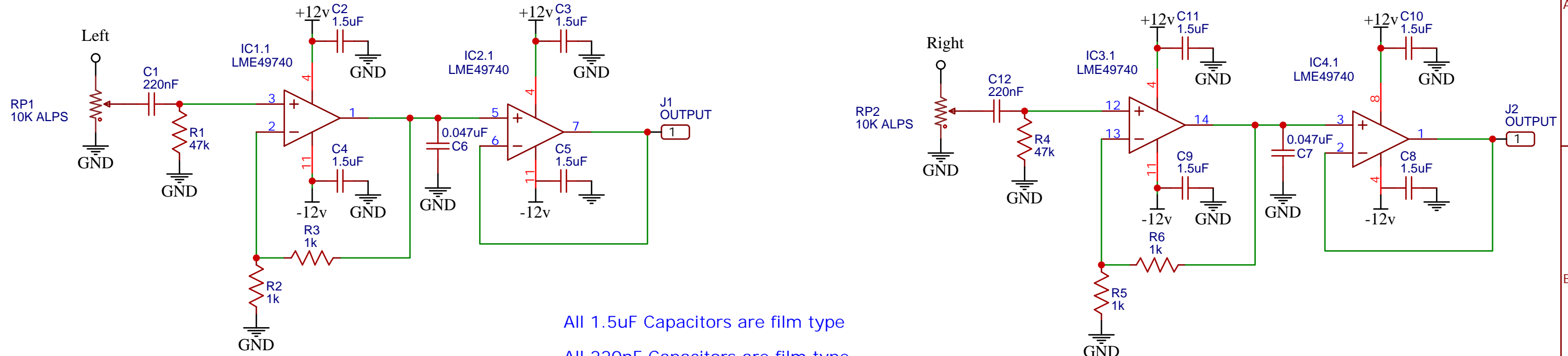


DESIGNED AND TESTED BY OTTOGMAN



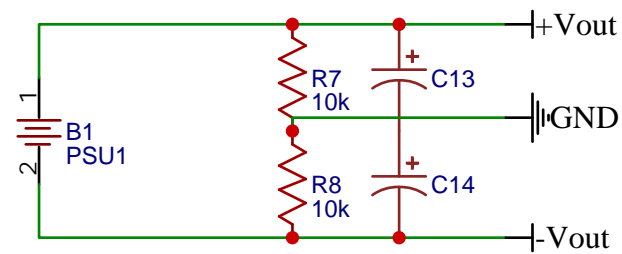
All 1.5uF Capacitors are film type

All 220nF Capacitors are film type

All resistors are metal film type. (%1 tolerance rated)

All 1.5uF Capacitors are film type

All 0.047uF Capacitors are Polypropylene



Use at least 1000uF electrolytics for C13 and C14

Use a highly filtered, linear power supply for PSU1

Use 24 volts (max) for PSU1, you can use lower values but keep in mind that the lower voltage means lower dynamic range

TITLE: Sheet_1		REV: 1.0
EasyEDA	Company: N/A	Sheet: 1/1
	Date: 2022-06-17	Drawn By: Ottogman