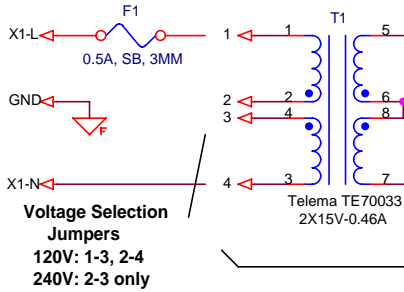
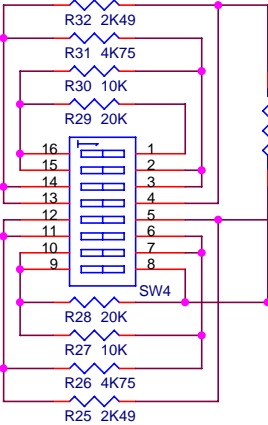
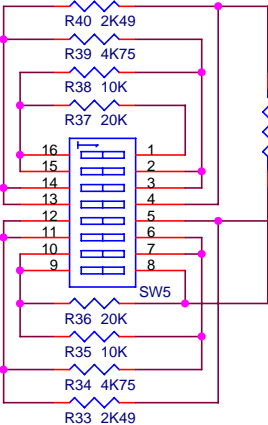


Integrated Charger Supply  
If using an external wallmart adapter do not install F1,T1,BR1,C15-16  
Connect to Ext. Charger V+ and GND Test points near BR1  
Recommended Adapter 18V, 300ma



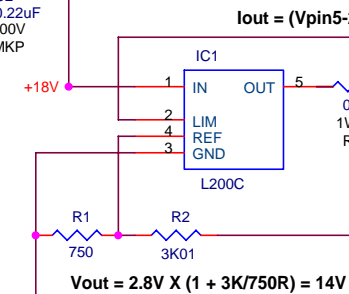
Integrated Charger Supply

Install VR2-VR3 Trimmers 25T or  
VR3-VR4 Potentiometers 1T, but  
NOT BOTH at the same time

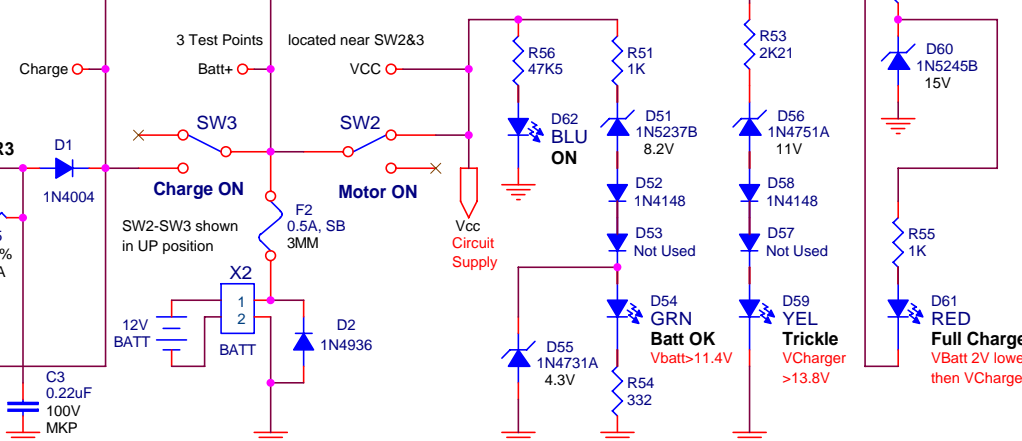


Adjustment Section

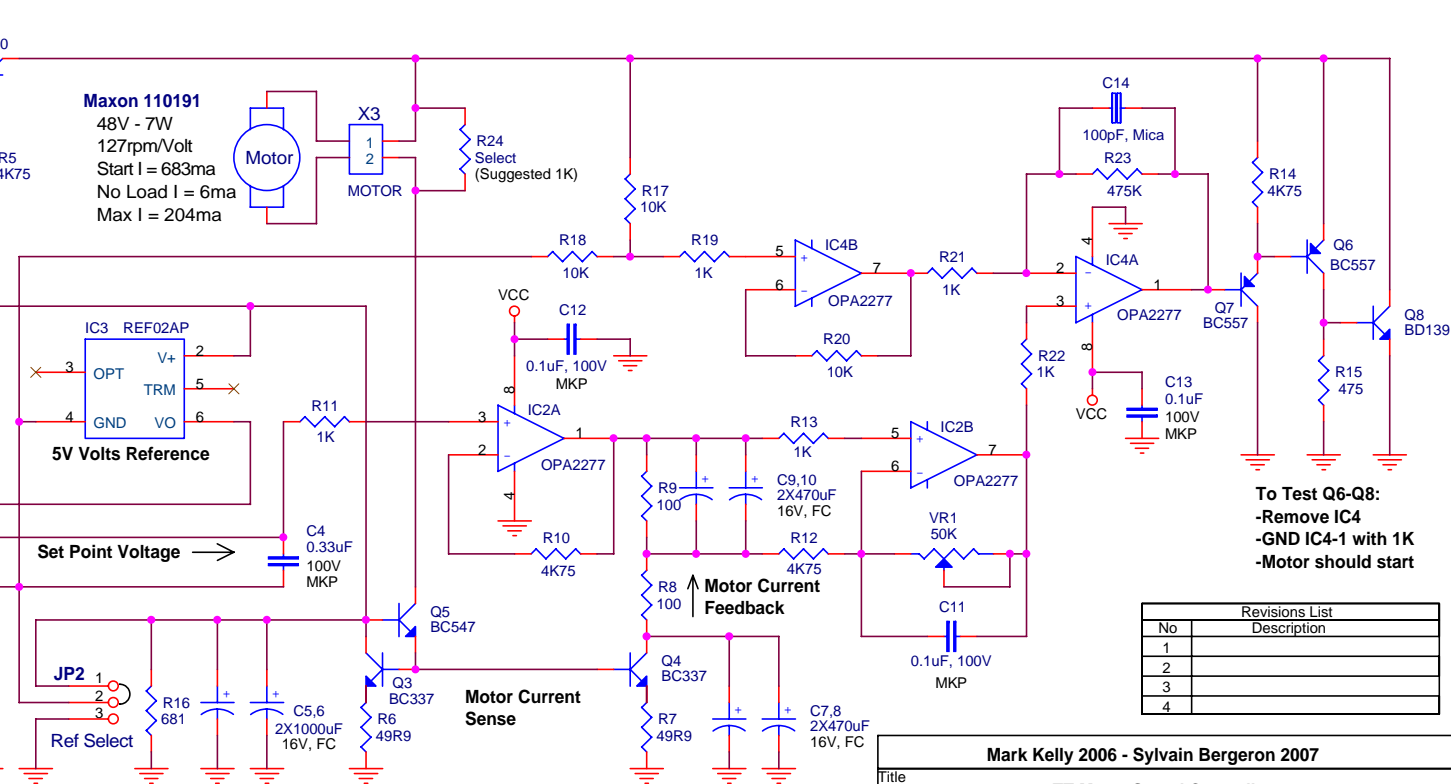
Notes:  
1- All Resistors Metal Film RN55, 1%, 1/4W, unless specified otherwise  
2- All Film Capacitors are Wima MKP, Otherwise Noted.



Battery Charger



SW & LED Indicators Section



Controller Section

JP2 Reference Return  
1-2: Ref to Motor return  
2-3: Ref to ground (no Current Feedback)

To Test Q6-Q8:  
-Remove IC4  
-GND IC4-1 with 1K  
-Motor should start

Revisions List	
No	Description
1	
2	
3	
4	

Mark Kelly 2006 - Sylvain Bergeron 2007		
Title TT Motor Speed Controller		
Size B	Document Number	Rev --
Schematic - PCB Ver 2.0		
Date:	Monday, December 31, 2007	Sheet 1 of 1