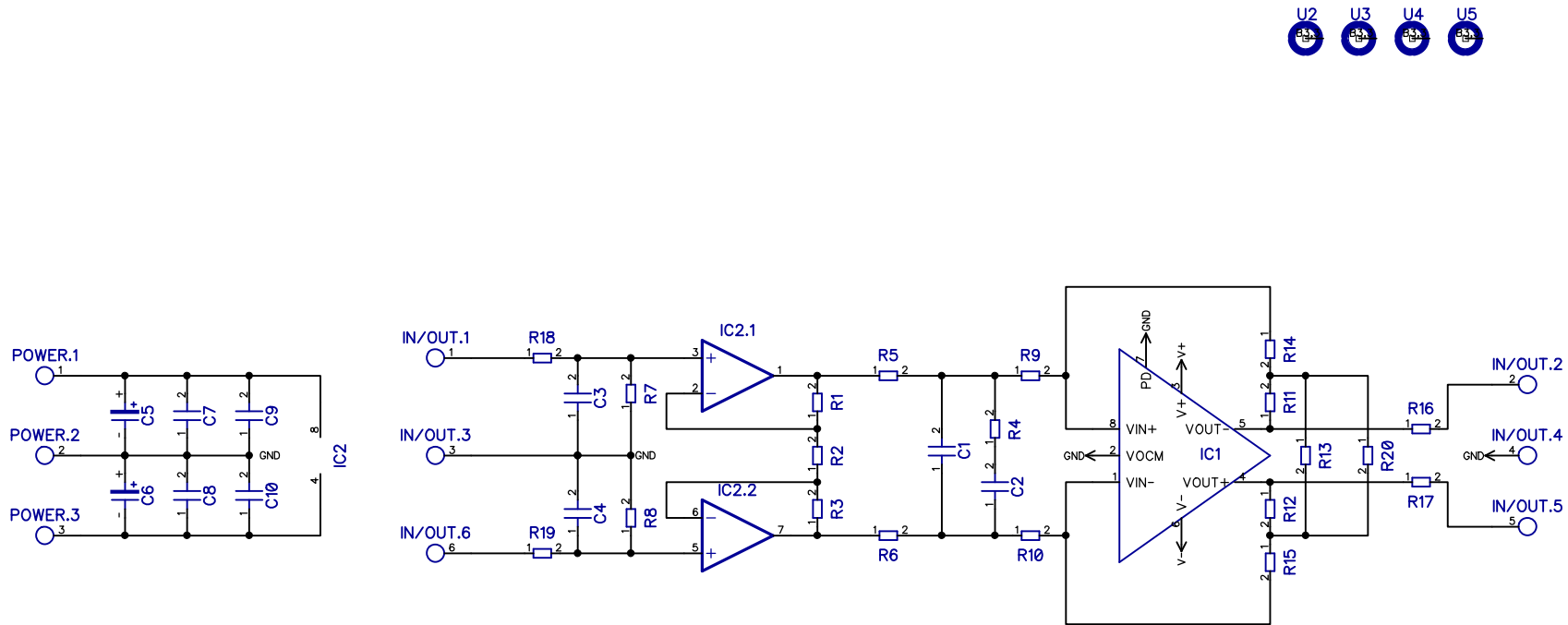


2

1

B

B



R20 is usually not populated. It is there to increase the gain for MC magnetic cartridges with R13 in situ,

A

A

Twisted Pear Audio	Retro - A fully symmetrical phono stage			
	Russ White			
Copyright 2009	SIZE	FSCM NO.	DWG NO.	REV
DIY Use Only	SCALE			Sheet 1

2

1