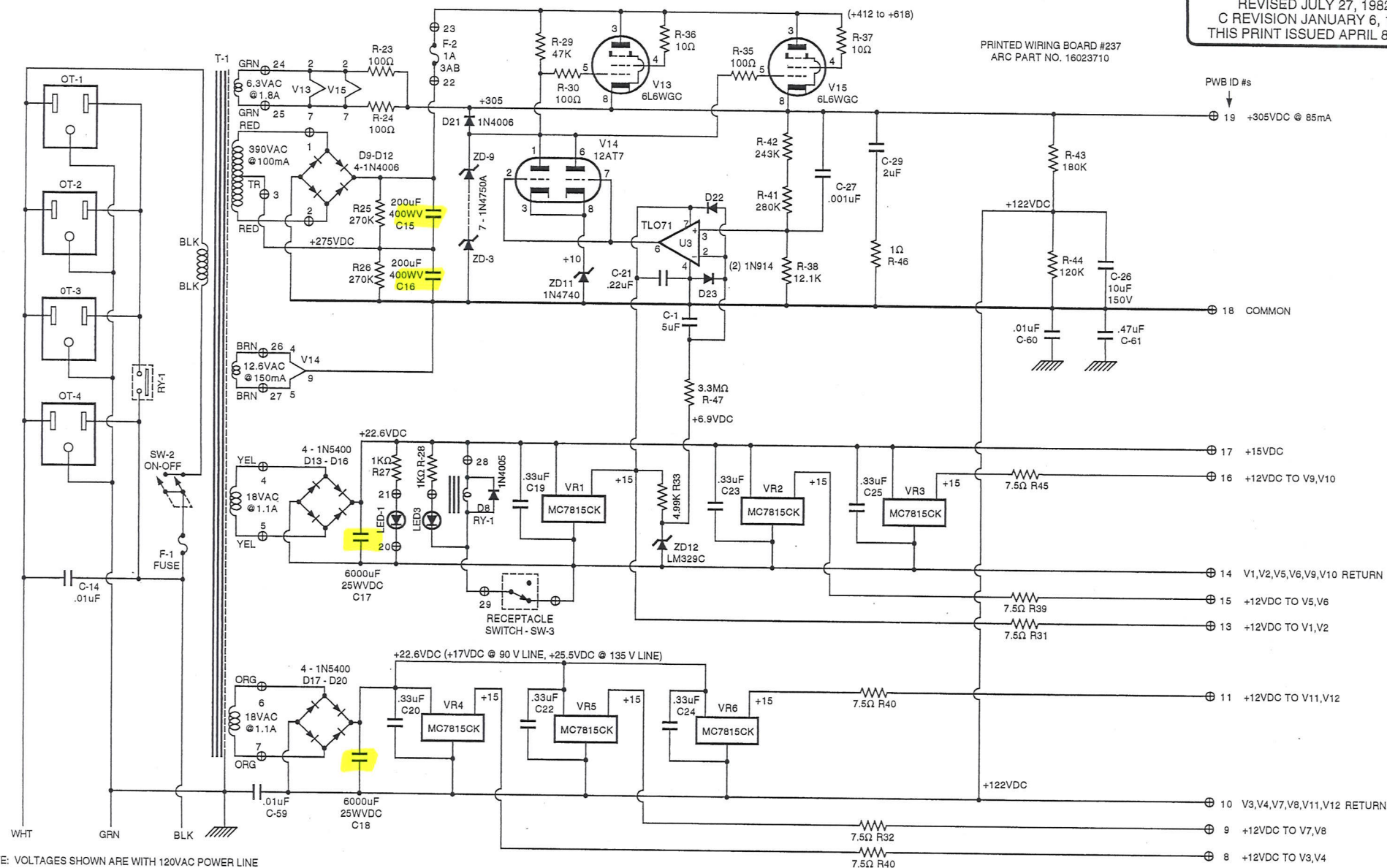


VACUUM-TUBE PREAMPLIFIER  
MODEL SP-10 REVISION C  
POWER SUPPLY CIRCUITS  
ORIGINAL DRAWING MAY 2, 1982  
REVISED JULY 27, 1982  
C REVISION JANUARY 6, 1986  
THIS PRINT ISSUED APRIL 8, 2003

PRINTED WIRING BOARD #237  
ARC PART NO. 16023710



NOTE: VOLTAGES SHOWN ARE WITH 120VAC POWER LINE  
OPERATING RANGE: 90VAC to 135VAC

**PROPRIETARY NOTICE:**

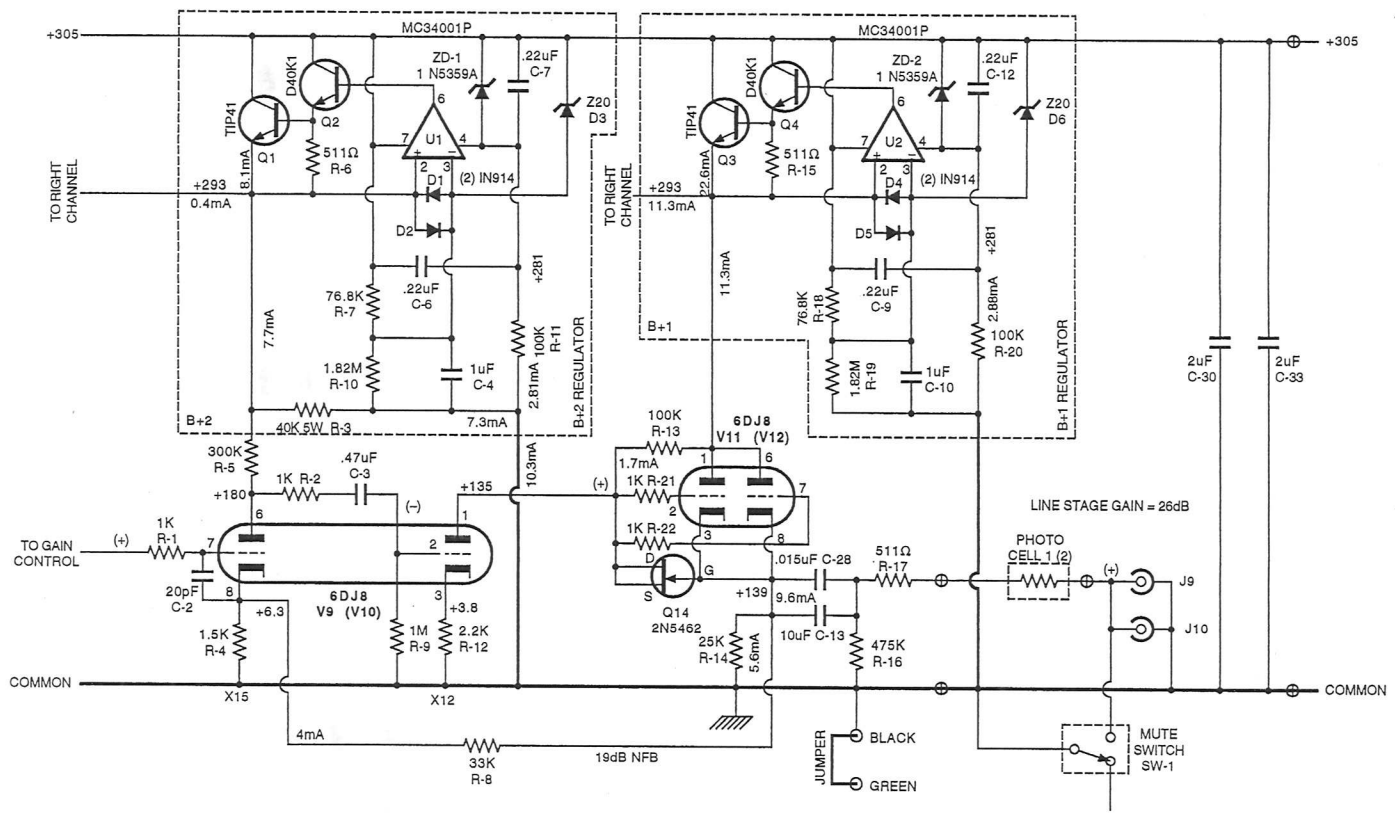
This drawing contains circuitry that is **Patented**,  
**Patent Pending**, and/or otherwise considered  
**PROPRIETARY**  
by AUDIO RESEARCH CORPORATION,  
and is furnished on a **CONFIDENTIAL**  
basis for identification purposes only  
**NO LICENSE FOR USE IS HEREBY GRANTED.**

F-1: 120VAC: 1.50A SLO  
240VAC: 0.75A SLO

NOTE: T-1 CHANGES PART NUMBER  
FOR DIFFERENT PRIMARY VOLTAGES.  
VALUE OF F-1 FUSE CHANGES ALSO.

PAGE 1 of 5

**AUDIO RESEARCH CORPORATION**  
3900 ANNAPOLIS LANE NORTH  
PLYMOUTH, MN 55447-5447  
TELEPHONE: (763) 577-9700  
FACSIMILE: (763) 577-0323

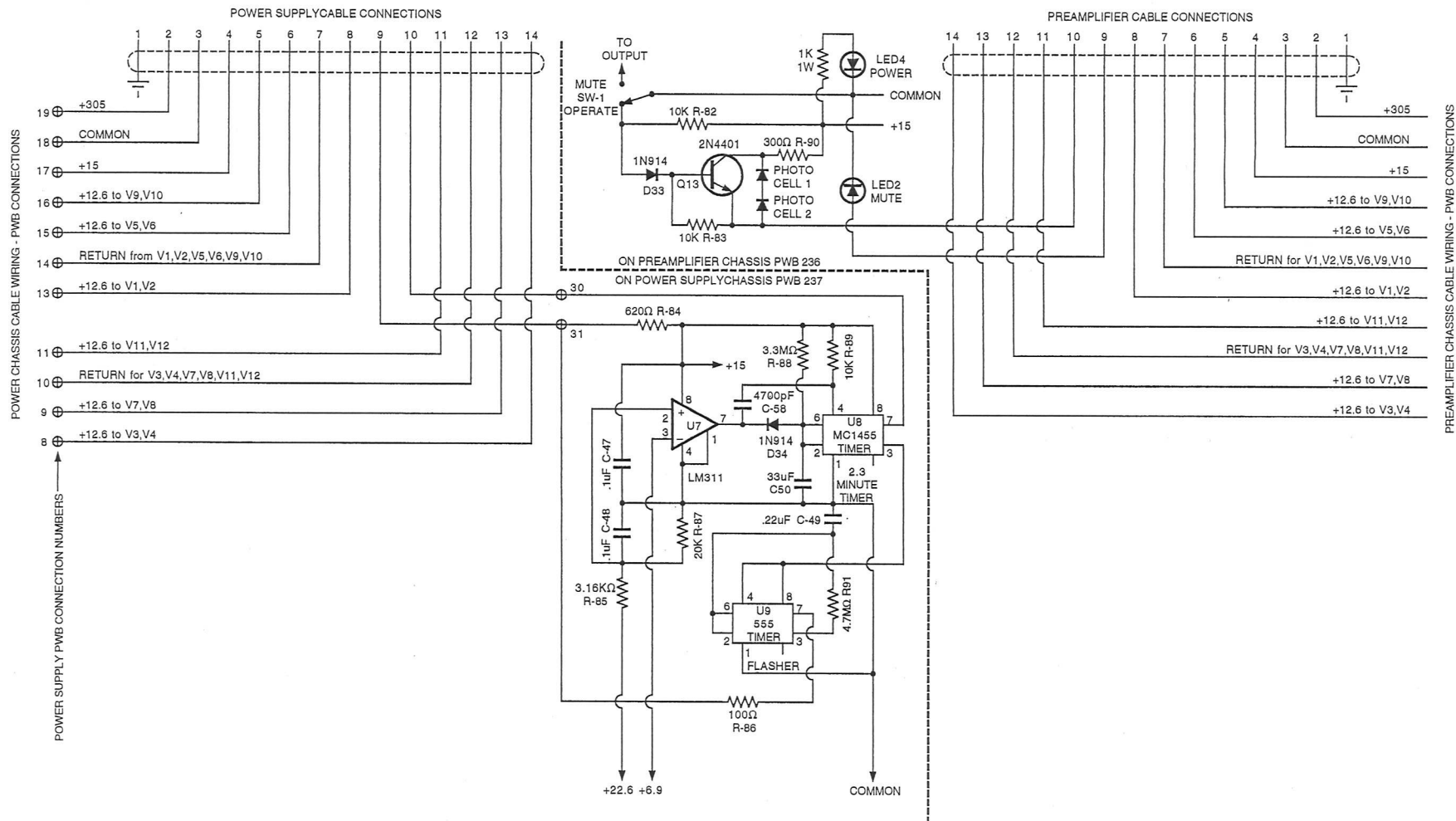


PART of PWB 236

**PROPRIETARY NOTICE:**  
This drawing contains circuitry that is Patented,  
Patent Pending, and/or otherwise considered  
**PROPRIETARY**  
by AUDIO RESEARCH CORPORATION,  
and is furnished on a **CONFIDENTIAL**  
basis for identification purposes only  
**NO LICENSE FOR USE IS HEREBY GRANTED.**

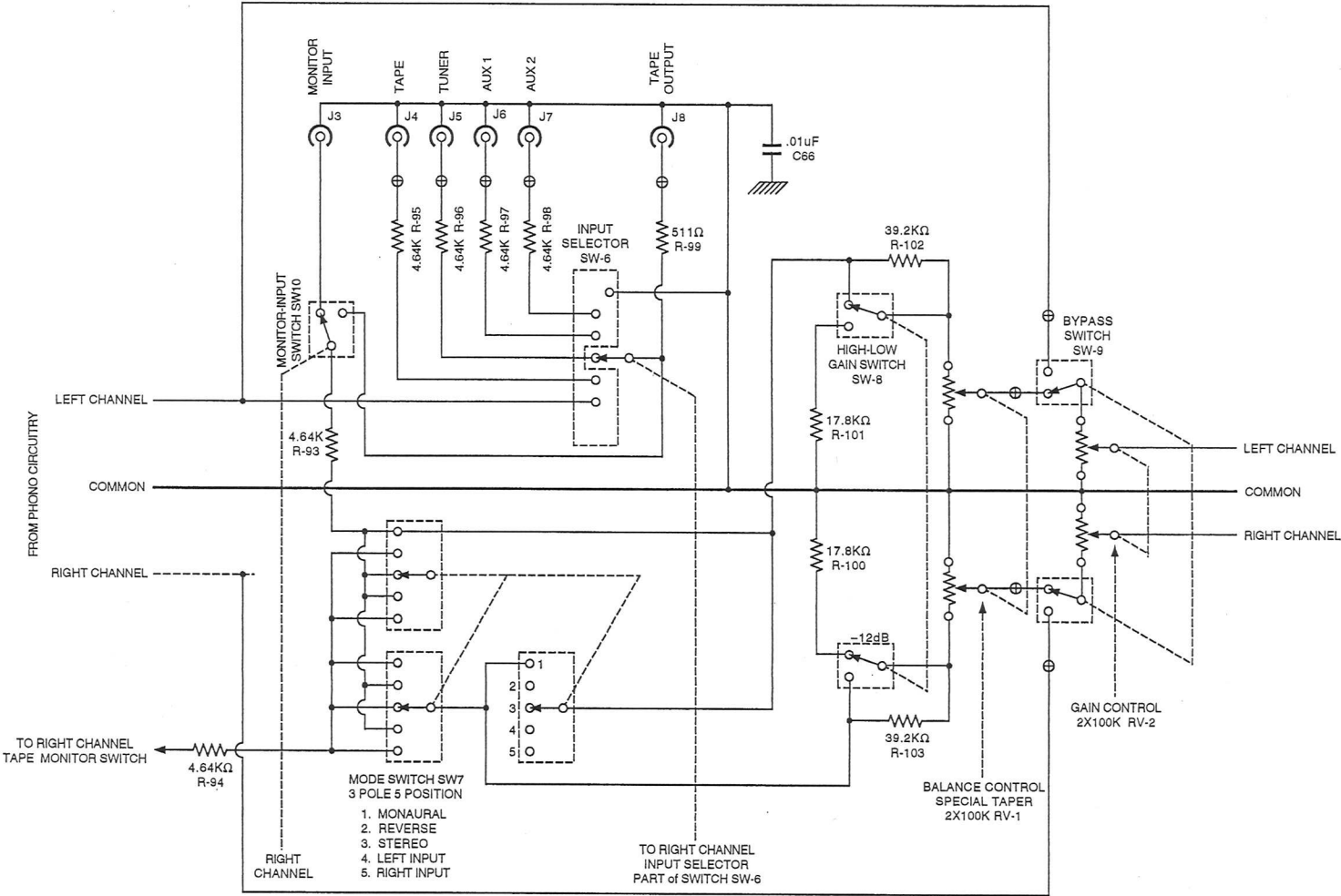


**PROPRIETARY NOTICE:**  
This drawing contains circuitry that is **Patented, Patent Pending, and/or otherwise considered PROPRIETARY** by AUDIO RESEARCH CORPORATION, and is furnished on a **CONFIDENTIAL** basis for identification purposes only  
**NO LICENSE FOR USE IS HEREBY GRANTED**



**PROPRIETARY NOTICE**

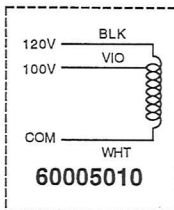
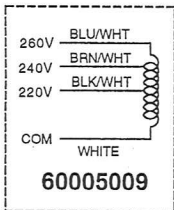
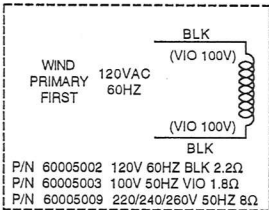
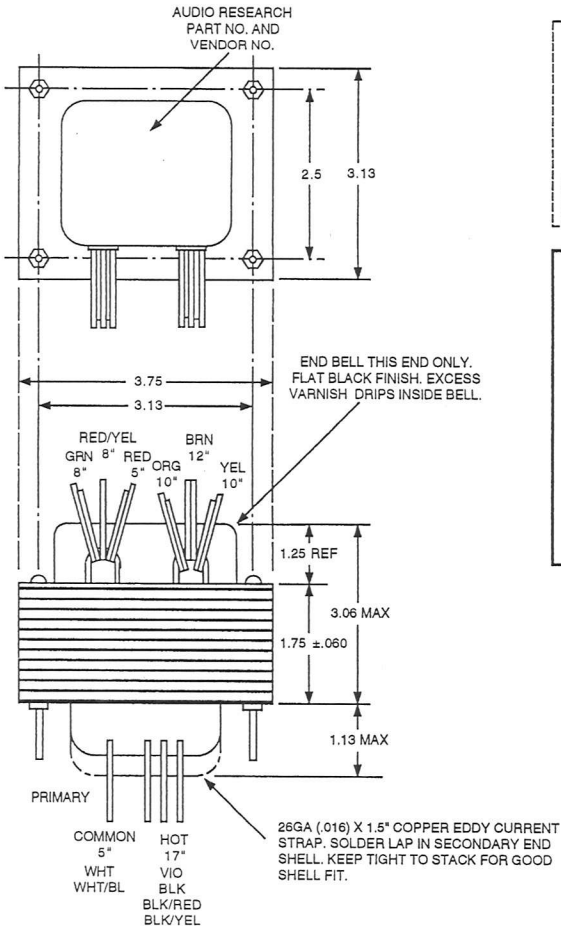
This drawing is considered **PROPRIETARY**  
and is furnished on a **CONFIDENTIAL**  
basis for use only as directed by  
**AUDIO RESEARCH CORPORATION**  
NO LICENSE FOR OTHER USE IS HEREBY GRANTED.



**PROPRIETARY NOTICE**  
This drawing is considered **PROPRIETARY**  
and is furnished on a **CONFIDENTIAL**  
basis for use only as directed by  
**AUDIO RESEARCH CORPORATION**  
NO LICENSE FOR OTHER USE IS HEREBY GRANTED.



REDRAWN  
4-15-03

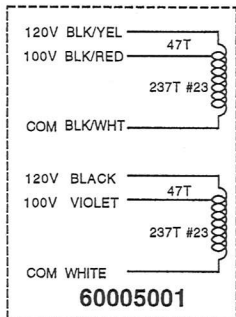


WIRING INSTRUCTIONS FOR UNIVERSAL "ALL VOLTAGE" TRANSFORMER P/N 60005001

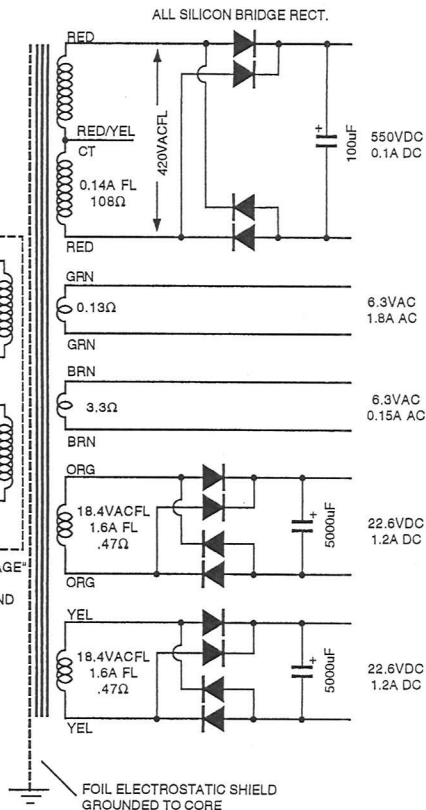
- 120V UNITS: CONNECT WHITE AND BLACK/WHITE TOGETHER TO CENTER BUSS BAR ON RECEPTACLES (AC CORD WHITE).  
TIE OFF UNUSED VIOLET AND BLACK/RED WIRES.
- 220V UNITS: SPLICE AND SLEEVE BLACK AND BLACK/WHITE LEADS TOGETHER. CONNECT CONNECT WHITE TO CENTER BUSS BAR ON RECEPTACLES (AC CORD WHITE).  
TIE OFF UNUSED BLACK/YELLOW AND VIOLET WIRES.
- 240V UNITS: SPLICE AND SLEEVE BLACK AND BLACK/WHITE LEADS TOGETHER. CONNECT WHITE TO CENTER BUSS BAR ON RECEPTACLES (AC CORD WHITE).  
CONNECT BLACK/YELLOW TO AC SWITCH.  
TIE OFF UNUSED BLACK/RED AND VIOLET WIRES.

WINDING SEQUENCE:

- PRIMARY (SEE DETAIL)
- FOIL SHIELD
- ORANGE 47T #21 19.86VACNL
- YELLOW 47T #21 19.86VACNL
- RED 1106T #30 467VACNL  
C TAP AT 553T
- BROWN 32T #30 13.52VACNL
- GREEN 16T 2X#22 6.76VACNL



60005001 UNIVERSAL "ALL VOLTAGE" TRANSFORMER REPLACES P/N'S 60005002, 60005003, 60005009 AND 60005010



REV A ORIGINAL ISSUE  
REV B 1.75 WAS 2.0, 2.5 WAS 2.25  
NOTE CHANGES. 3.13 WAS 3.0, 3.75 WAS 3.34  
REV C GREEN WAS 1.0A, REDRAW  
ADD 5003, SHORTER LEADS  
REV D 5-8-84 ADD 5010 SPECS.  
REV E 1-25-85 ADD 5001, CHANGE  
TURNS TO VENDOR DESIGN.  
GREEN WAS 17T.

PROPRIETARY NOTICE:  
THIS DRAWING IS CONSIDERED PROPRIETARY  
AND IS FURNISHED FOR USE ONLY AS  
DIRECTED BY AUDIO RESEARCH CORPORATION

NO LICENSE FOR USE IS HEREBY GRANTED.

- NOTES:
1. CORE 1.25 X 1.75 29GA M6 GRAIN ORIENTED LAMINATIONS, STACKED 2X2 12KG FLUX DENSITY AT 120V 60HZ.
  2. LAYER WOUND, IMPREGNATE WITH DOLPHUS BB353 HEAVY BLACK VARNISH, OR APPROVED EQUIVALENT, LESS END SHELLS. MUST NOT BUZZ.
  3. LEADS STRANDED UL/CSA FR-1 105°C PVC INSULATED. STRIPPED 1/4" ALL LEADS 20GA, LENGTHS AS SHOWN.
  4. ALL LOADS CONSTANT CURRENT. DESIGN FOR LOWEST HEAT RISE AT 12KG.
  5. END SHELL FLAT BLACK FINISH. INSTALL (2) SCREWS.
  6. SUPPLY SEPARATELY (2) # 8-32 X 2.5" R.H.S.M. PLATED, HEX NUTS, INSULATED WASHERS.
  7. HI POT TEST 1750V RMS ALL WINDINGS.

60005001 100/120/220/240V 50/60HZ PRI  
60005002 120V 60HZ PRI  
60005003 100V 50HZ PRI  
60005009 220/240/260V 50HZ PRI  
60005010 100/120V 50/60HZ PRI

AUDIO RESEARCH CORPORATION  
3900 ANNAPOLIS LANE NORTH  
PLYMOUTH, MN 55447-5447  
TELEPHONE: (763) 577-9700  
FACSIMILE: (763) 577-0323