

Primary Fuse = AGC-4  
 Filament Fuse = MDA-1  
 108V = 2.1V, 4.5V

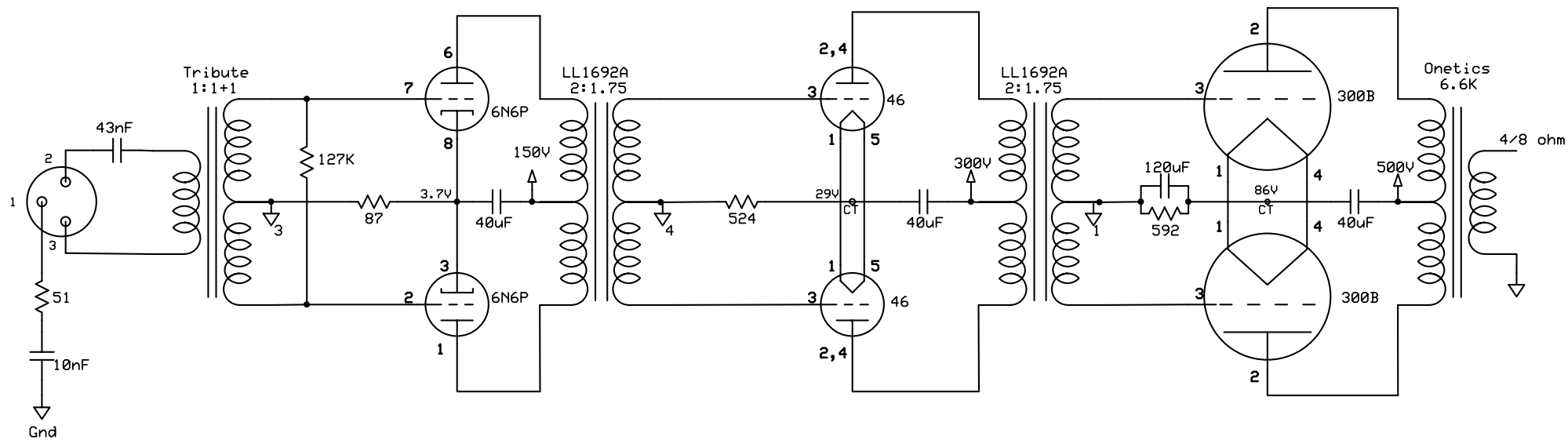
Push Pull 300B, 15W

Power Supply

Rev 2.1

2/3/2009

Page 1 of 4



108V = 2.1V, 4.5V

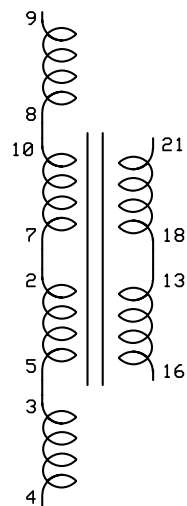
Push Pull 300B, 15W

Left Channel

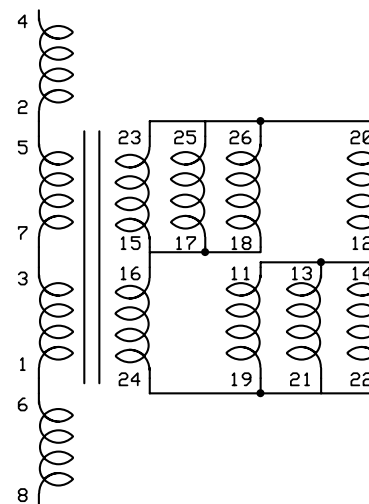
Rev 2.2

5/1/2009

Page 2 of 4



LL1692A  
2+2 : 1.75+1.75



LL1620  
6k : 4

Push Pull 300B, 15W

Transformer Wiring

Rev 2.2

5/1/2009

Page 3 of 4

