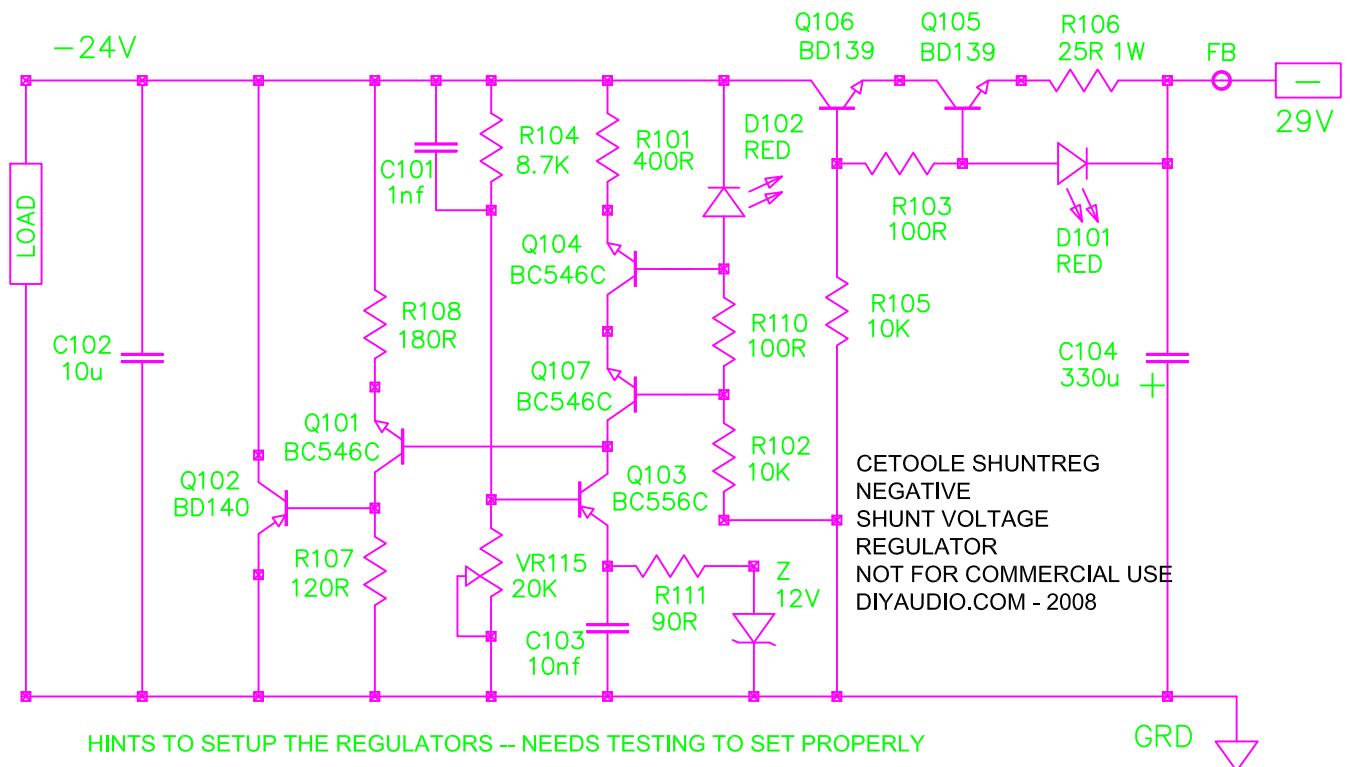
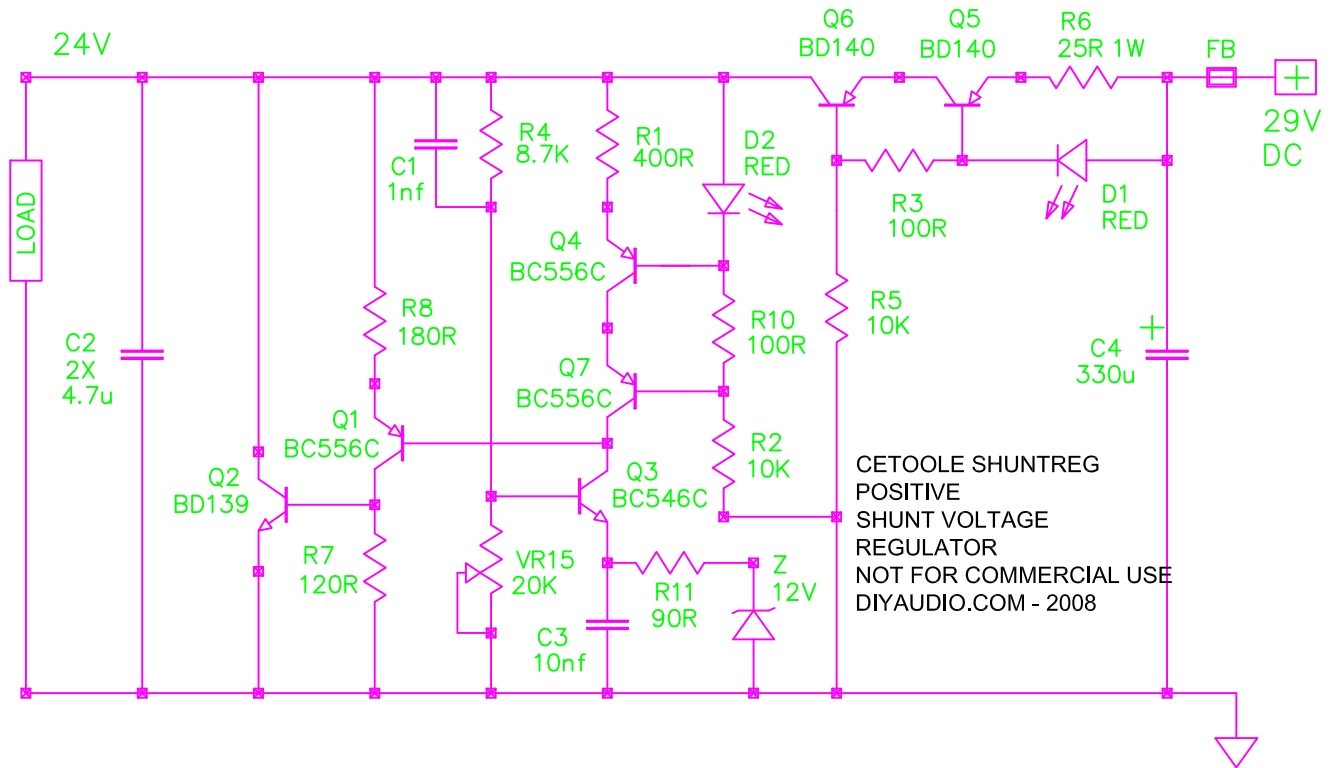


BIPOLAR DISCRETE POSITIVE / NEGATIVE SHUNT REGULATOR
 DESIGN BY CETOOLE
 ART WORK BY APASSGEAR / STEENOE / MANU - V4
 NOT FOR COMMERCIAL USE - DIYAUDIO.COM 2008



HINTS TO SETUP THE REGULATORS -- NEEDS TESTING TO SET PROPERLY

15V OUT USE R4 / 104 WITH 1.5K
 18V OUT USE R4 / 104 WITH 4.0K
 24V OUT USE R4 / 104 WITH 8.7K
 30V OUT USE R4 / 104 WITH 12K

TO SET CCS CHANGE R6 / 106 AS FOLLOWS
 10R = 170mA -- 15R = 130mA -- 18R = 114mA
 20R = 105mA -- 25R = 89mA -- 30R = 78mA