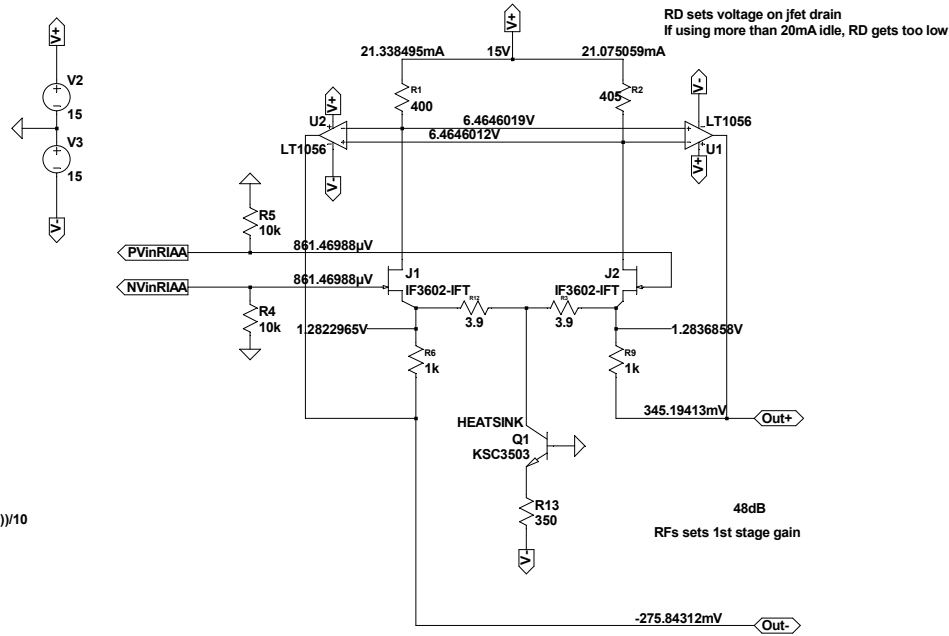
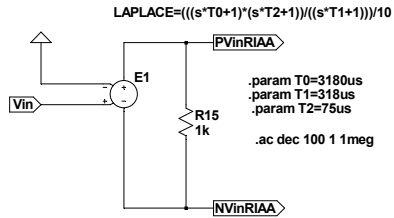
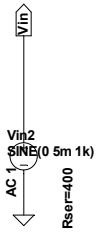


.MODEL IF3602-IFT NJF VTO=-1.5 BETA=260m LAMBDA=1m RD=0.04 RS=0.04 CGS=600p CGD=1200p PB=0.75 IS=50000f AF=1 FC=0.5 BETATCE=-0.5 N=1 NR=2 XTI=3 VTOTC=-2.5m ALPHA=1u VK=1 ISR=10f KF=0.001f M=0.5 B=1.8 NLEV=2 MFG=InterFET
.model RED D(Is=1.0e-12 N=3.0 Rs=9.0 Eg=2.17 Tnom=27deg)

umcyc)*FFT)



.MODEL KSC3503 NPN
+ IS =2.0893E-14
+ BF =101.5
+ NF =1.0
+ BR =7.655
+ NR =1.007
+ IBC =2.0893E-14
+ IBC =2.0893E-14
+ ISE =4.3652E-14
+ NE =1.5
+ ISC =1.2598E-9
+ NC =2.0
+ VAF =717.25
+ VAR =13.16
+ IKF =0.2512
+ IKR =0.0832
+ RB =2.98
+ RBM =0.001
+ IRB =0.001
+ RE =0.5305
+ RC =0.9
+ QCO =0.05
+ RCO =50.1187
+ VO =2.476
+ GAMMA =1.8231E-7
+ CJE =6.6039E-11
+ VJE =0.7017
+ MJE =0.3253
+ FC =0.5
+ CJC =6.6072E-12
+ VJC =0.5
+ MJC =0.2439
+ XCJC =0.6488
+ XTB =1.4089
+ EG =1.2129
+ XTI =3.0

